

K1800 SERIES



K1800

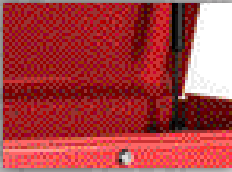
MAINTENANCE PRO™
PROLINE™
INDUSTRIAL

The K1800 is packed with all power and still fits in your tight spaces.
At 18" in depth the smaller frame allows for more storage in more places.



MADE IN THE **USA** 

K1800 SERIES



Gas-Shock Lid Stays In Top Chests & Canopies



Ball-Bearing or Friction Drawer Slides Options



High Security Tubular Locking System



Heavy-Duty Roller Bearing Casters



Tubular Steel Side Handles



BK R BL BUR B YW UB
COLORS AND CUSTOMIZATION AVAILABLE

Customize the color of your products. Simply place one of the abbreviations at the end of the model number.

STANDARD FEATURES

	STEEL GAUGE	CENTER WHEEL AXLE	CASTERS	WORK SURFACES	OTHER
MAINTENANCE PRO™	16/18 ga	X	6x2	Coated MDF	Drawer Liners
PROLINE	18/20 ga		5x2	MDF	
INDUSTRIAL	18/20 ga		5x2		

K1800

53"

MAINTENANCE PRO™

5302MP 8-DRAWER TOP CHEST

OVERALL:	DRS.	WIDTH	DEPTH	HEIGHT	NET WT	SHIP WT	CAPACITY
	8	53"	18"	18 ½"	155 lbs.	185 lbs.	12,060 cu. in.
TOP TILL:	-	52 ⅝"	17 ⅞"	2 ½"			-
DRAWERS:	4	23"	16 ½"	2"			120 lbs.
	4	23"	16 ½"	4"			120 lbs.

5350MP TOP CANOPY

OVERALL:	DRS.	WIDTH	DEPTH	HEIGHT	NET WT	SHIP WT	CAPACITY
	8	53"	18"	20"	75 lbs.	85 lbs.	17,780 cu. in.

- 10 pc. Toolholder Hook Set (99851)

5300MP 12-DRAWER CABINET

OVERALL:	DRS.	WIDTH	DEPTH	HEIGHT	NET WT	SHIP WT	CAPACITY
	8	53"	18"	41 ¾"	335 lbs.	365 lbs.	19,992 cu. in.
TOP DRAWER:	1	49"	16 ½"	3 ⅝"			120 lbs.
LEFT BANK:	2	23"	16 ½"	2"			120 lbs.
	3	23"	16 ½"	4"			120 lbs.
	1	23"	16 ½"	6"			120 lbs.
RIGHT BANK:	2	23"	16 ½"	2"			120 lbs.
	2	23"	16 ½"	4"			120 lbs.
	1	23"	16 ½"	10"			240 lbs.

- Ball-Bearing Drawer Slides That Move Easily Under Heavy Drawer Loads
- Heavy Duty, Non-Slip Drawer Liners & Full-Width Aluminum Drawer Pulls
- Large 6" x 2" Roller Bearing Heavy Duty Casters
- 10" Center Wheel Axle Adds Strength & Stability
- Coated MDF Work Surface
- Metal Thickness: Body - 16 ga. Drawers - 20 ga.



53"

MAINTENANCE PRO™

382MP 6-DRAWER SIDE CABINET

OVERALL:	DRS.	WIDTH	DEPTH	HEIGHT	NET WT	SHIP WT	CAPACITY
	6	13 3/8"	18"	33 1/8"	89 lbs.	94 lbs.	4,231 cu. in.
DRAWERS:	1	9 3/4"	16 1/2"	2"			120 lbs.
	4	9 3/4"	16 1/2"	4"			120 lbs.
	1	9 3/4"	16 1/2"	10"			240 lbs.

380MP 2-SHELF SIDE LOCKER

OVERALL:	DRS.	WIDTH	DEPTH	HEIGHT	NET WT	SHIP WT	CAPACITY
	2	13 3/8"	18"	33 1/8"	53 lbs.	68 lbs.	6,300 cu. in.
SHELVES:	1	9 3/4"	16 1/2"	2"			120 lbs.
							120 lbs.
							120 lbs.

- Hangs on Either Side of MP Cabinets
- Metal Thickness: Body - 16 ga. Drawers - 18 ga.
- Model 382/380MP are Compatible with 5300 MP Cabinets



27"

MAINTENANCE PRO™

2700MP 5-DRAWER TOP CHEST

OVERALL:	DRS.	WIDTH	DEPTH	HEIGHT	NET WT	SHIP WT	CAPACITY
	5	27"	18"	18 3/8"	90 lbs.	98 lbs.	6,243 cu. in.
TOP TILL:	-	26 5/8"	17 1/2"	3 5/8"			120 lbs.
DRAWERS:	4	23"	16 1/2"	2"			120 lbs.
	1	23"	16 1/2"	4"			120 lbs.

2702MP 6-DRAWER CABINET

OVERALL:	DRS.	WIDTH	DEPTH	HEIGHT	NET WT	SHIP WT	CAPACITY
	6	27"	18"	41 3/4"	140 lbs.	150 lbs.	10,626 cu. in.
DRAWERS:	1	23"	16 1/2"	2"			120 lbs.
	4	23"	16 1/2"	4"			120 lbs.
	1	23"	16 1/2"	10"			120 lbs.

- Heavy Duty, Non-Slip Drawer Liners & Full-Width Aluminum Drawer Pulls
- Large 6" x 2" Roller Bearing Heavy Duty Casters
- Ball Bearing Drawer Slides
- Coated MDF Work Surface



K1800

39"

PROLINE™

10489 5-DRAWER TOP CHEST

OVERALL:	DRS.	WIDTH	DEPTH	HEIGHT	NET WT	SHIP WT	CAPACITY
	5	39 3/8"	18"	16 1/2"	93 lbs.	102 lbs.	7,707 cu. in.
DRAWERS:	4	23"	16 1/2"	2"			120 lbs.
	1	23"	16 1/2"	4"			120 lbs.
COMPARTMENT:	-	13 1/2"	17 3/4"	13 1/4"			



10488 8-DRAWER TOP CHEST

OVERALL:	DRS.	WIDTH	DEPTH	HEIGHT	NET WT	SHIP WT	CAPACITY
	8	39 3/8"	17 3/4"	16 1/2"	140 lbs.	150 lbs.	7,742 cu. in.
SMALL BANK:	2	9 1/2"	16 1/2"	2"			120 lbs.
	2	9 1/2"	16 1/2"	4"			120 lbs.
LARGE BANK:	2	23"	16 1/2"	2"			120 lbs.
	2	23"	16 1/2"	4"			120 lbs.



10491 7-DRAWER CABINET

OVERALL:	DRS.	WIDTH	DEPTH	HEIGHT	NET WT	SHIP WT	CAPACITY
	7	39 3/8"	18"	35 1/8"	175 lbs.	205 lbs.	13,865 cu. in.
DRAWERS:	3	23"	16 1/2"	2"			120 lbs.
	3	23"	16 1/2"	4"			120 lbs.
	1	23"	16 1/2"	6"			120 lbs.
COMPARTMENT:	-	10 3/4"	18"	28"			-

- Storage Compartment with MDF Shelf & Work Surface
- Ball-Bearing Drawer Slides
- 5" x 2" Roller Bearing Casters Hold Up to 350 lbs. Each
- Metal Thickness: Body - 18 ga. Drawers - 20 ga.



10490 TOP CANOPY

OVERALL:	DRS.	WIDTH	DEPTH	HEIGHT	NET WT	SHIP WT	CAPACITY
	-	39"	18"	21"	69 lbs.	74 lbs.	12,200 cu. in.

- Fits 39" Wide Pro-Line™ Models
- Gas Shock Lid Stays
- MDF Work Surface Included
- 10 pc. Toolholder Hook Set (99851)



39"

PROLINE™

10492 13-DRAWER CABINET

OVERALL:	DRS.	WIDTH	DEPTH	HEIGHT	NET WT	SHIP WT	CAPACITY
	13	39 3/8"	18"	39 1/8"	220 lbs.	250lbs.	13,315 cu. in.
DRAWERS:	1	23"	16 1/2"	2"			120 lbs.
	5	23"	16 1/2"	4"			120 lbs.
	1	23"	16 1/2"	6"			120 lbs.
	1	9 3/4"	16 1/2"	2"			120 lbs.
	4	9 3/4"	16 1/2"	4"			120 lbs.
	1	9 3/4"	16 1/2"	10"			240 lbs.

- MDF Work Surface & Wide Top Drawer for Added Storage
- 5" x 2" Roller Bearing Casters Hold Up to 350 lbs. Each
- Metal Thickness: Body - 18 ga. Drawers - 20 ga.



10493 12-DRAWER CABINET

OVERALL:	DRS.	WIDTH	DEPTH	HEIGHT	NET WT	SHIP WT	CAPACITY
	12	39 3/8"	18"	39 1/8"	225 lbs.	255 lbs.	13,365cu. in.
DRAWERS:	1	35 3/4"	16 1/2"	6"			120 lbs.
	2	23"	16 1/2"	2"			120 lbs.
	3	23"	16 1/2"	4"			120 lbs.
	1	23"	16 1/2"	6"			120 lbs.
	2	9 3/4"	16 1/2"	2"			120 lbs.
	2	9 3/4"	16 1/2"	4"			120 lbs.
	1	9 3/4"	16 1/2"	10"			240 lbs.

- MDF Work Surface & Wide Top Drawer for Added Storage
- 5" x 2" Roller Bearing Casters Hold Up to 350 lbs. Each
- Metal Thickness: Body - 18 ga. Drawers - 20 ga.



39"

INDUSTRIAL

305X 5-DRAWER CHEST

OVERALL:	DRS.	WIDTH	DEPTH	HEIGHT	NET WT	SHIP WT	CAPACITY
	5	39 3/8"	18"	16 1/2"	93 lbs.	102 lbs.	7,707 cu. in.
DRAWERS:	4	23"	16 1/2"	2"			120 lbs.
	1	23"	16 1/2"	4"			120 lbs.
COMPARTMENT:	-	13 1/2"	17 3/4"	13 1/4"			

- Fits Models 310X, 315X & Pro-Line™ Cabinets
- Heavy-Duty, Plated Lift Handles
- Full-Width Aluminum Drawer Pulls
- Ball-Bearing Drawer Slides
- Compartment Has Removable Partial Shelf and Locking Door
- Metal Thickness: Body - 18 ga. Drawers - 20 ga.



K1800

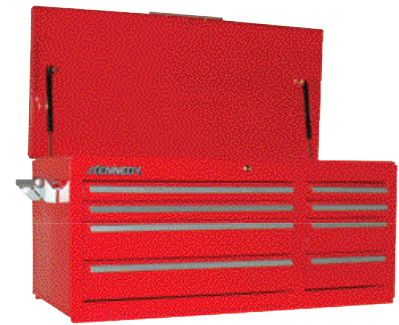
39"

INDUSTRIAL

308X 8-DRAWER TOP CHEST

OVERALL:	DRS.	WIDTH	DEPTH	HEIGHT	NET WT	SHIP WT	CAPACITY
	8	39 3/8"	17 3/4"	16 1/2"	140 lbs.	150 lbs.	7,742 cu. in.
SMALL BANK:	2	9 4/5"	16 1/2"	2"			120 lbs.
	2	9 4/5"	16 1/2"	4"			120 lbs.
LARGE BANK:	2	23"	16 1/2"	2"			120 lbs.
	2	23"	16 1/2"	4"			120 lbs.

- Fits Models 310X, 315X & Pro-Line™ Cabinets
- Heavy-Duty, Plated Lift Handles
- Full-Width Aluminum Drawer Pulls
- Ball-Bearing Drawer Slides
- Compartment Has Removable Partial Shelf and Locking Door
- Metal Thickness: Body - 18 ga. Drawers - 20 ga.



310X 10-DRAWER CABINET

OVERALL:	DRS.	WIDTH	DEPTH	HEIGHT	NET WT	SHIP WT	CAPACITY
	10	39 3/8"	18"	34"	180 lbs.	210 lbs.	11,551 cu. in.
DRAWERS:	3	23"	16 1/2"	4"			120 lbs.
	2	23"	16 1/2"	6"			120 lbs.
	3	9 5/8"	16 1/2"	4"			120 lbs.
	2	9 5/8"	16 1/2"	6"			120 lbs.

- 5" x 2" Roller Bearing Casters Hold Up to 350 lbs. Each
- High Security Tubular Locking System
- Ball-Bearing Drawer Slides
- Tubular Push Handle Included
- Metal Thickness: Body - 18 ga. Drawers - 20 ga.



315X 15-DRAWER CABINET

OVERALL:	DRS.	WIDTH	DEPTH	HEIGHT	NET WT	SHIP WT	CAPACITY
	15	39 3/8"	18"	39"	230 lbs.	260 lbs.	13,054 cu. in.
DRAWERS:	5	23"	16 1/2"	2"			120 lbs.
	3	23"	16 1/2"	4"			120 lbs.
	1	23"	16 1/2"	6"			120 lbs.
	2	9 5/8"	16 1/2"	2"			120 lbs.
	3	9 5/8"	16 1/2"	4"			120 lbs.
	1	9 5/8"	16 1/2"	12"			120 lbs.

- 5" x 2" Roller Bearing Casters Hold Up to 350 lbs. Each
- High Security Tubular Locking System
- Ball-Bearing Drawer Slides
- Tubular Push Handle Included
- Metal Thickness: Body - 18 ga. Drawers - 20 ga.



27" INDUSTRIAL

273/273X 3-DRAWER CABINET

OVERALL:	DRS.	WIDTH	DEPTH	HEIGHT	NET WT	SHIP WT	CAPACITY
	3	27"	18"	35"	99/102 lbs.	110/113 lbs.	8,235 cu. in.
DRAWERS:	2	23"	16 1/2"	4"			120 lbs.
	1	23"	16 1/2"	6"			120 lbs.
COMPARTMENT:	-	24 1/8"	17 3/4"	11 1/4"			120 lbs.

- 5" x 2" Roller Bearing Casters Hold Up to 350 lbs. Each
- Swing-Down Panel Conceals and Secures Spacious Storage Compartment
- Metal Thickness: Body - 18 ga. Drawers - 20 ga.
- Model 273 - Features Friction Drawer Slides
- Model 273X - Features Ball-Bearing Drawer Slides



275/275X 5-DRAWER CABINET

OVERALL:	DRS.	WIDTH	DEPTH	HEIGHT	NET WT	SHIP WT	CAPACITY
	3	27"	18"	35"	110/115 lbs.	121/126 lbs.	8,003 cu. in.
DRAWERS:	3	23"	16 1/2"	2"			120 lbs.
	2	23"	16 1/2"	4"			120 lbs.
COMPARTMENT:	-	24 1/8"	17 3/4"	11 1/4"			120 lbs.

- 5" x 2" Roller Bearing Casters Hold Up to 350 lbs. Each
- Swing-Down Panels Conceal and Secure Spacious Storage Compartments
- Metal Thickness: Body - 18 ga. Drawers - 20 ga.
- Model 275 - Features Friction Drawer Slides
- Model 275X - Features Ball-Bearing Drawer Slides



277/277X 7-DRAWER CABINET

OVERALL:	DRS.	WIDTH	DEPTH	HEIGHT	NET WT	SHIP WT	CAPACITY
	7	27"	18"	35"	127/134 lbs.	138/145 lbs.	8,404 cu. in.
DRAWERS:	3	23"	16 1/2"	2"			120 lbs.
	3	23"	16 1/2"	4"			120 lbs.
	1	23"	16 1/2"	6"			120 lbs.

- 5" x 2" Roller Bearing Casters Hold Up to 350 lbs. Each
- Model 277 - Features Friction Drawer Slides
- Model 277X - Features Ball-Bearing Drawer Slides



376X 6-DRAWER CABINET

OVERALL:	DRS.	WIDTH	DEPTH	HEIGHT	NET WT	SHIP WT	CAPACITY
	6	27"	18"	39"	137 lbs.	148 lbs.	9,426 cu. in.
DRAWERS:	3	23"	16 1/2"	2"			120 lbs.
	3	23"	16 1/2"	4"			120 lbs.
COMPARTMENT:	-	24 1/8"	17 3/4"	11 1/4"			120 lbs.

- 5" x 2" Roller Bearing Casters Hold Up to 350 lbs. Each
- Swing-Down Panel Conceals and Secures Spacious Storage Compartment
- Metal Thickness: Body - 18 ga. Drawers - 20 ga.
- Ball-Bearing Drawer Slides



378X 8-DRAWER CABINET

OVERALL:	DRS.	WIDTH	DEPTH	HEIGHT	NET WT	SHIP WT	CAPACITY
	8	27"	18"	39"	154 lbs.	165 lbs.	9,826 cu. in.
DRAWERS:	3	23"	16 1/2"	2"			120 lbs.
	4	23"	16 1/2"	4"			120 lbs.
	1	23"	16 1/2"	6"			120 lbs.

- 5" x 2" Roller Bearing Casters Hold Up to 350 lbs. Each
- Metal Thickness: Body - 18 ga. Drawers - 20 ga.
- Ball-Bearing Slides Drawer Slides



K1800

21"

INDUSTRIAL

21040 / 21041 / 21042 4-DRAWER CABINET

OVERALL:	DRS.	WIDTH	DEPTH	HEIGHT	NET WT	SHIP WT	CAPACITY
	4	20 1/2"	18"	34"	103 lbs.	133 lbs.	5,950 cu. in.
DRAWERS:	2	16 1/2"	16 1/2"	3"			120 lbs.
	1	16 1/2"	16 1/2"	6 1/4"			120 lbs.
	1	16 1/2"	16 1/2"	9 1/2"			120 lbs.

- 5" x 1 1/4" Roller Bearing Casters Hold Up to 200 lbs. Each
- Ball-Bearing Drawer Slides and Tubular Push Handle
- Small in Size, But Big on Security!
- Metal Thickness: Body - 18 ga. Drawers - 20 ga.
- Model 21040 - Features High-Security Tubular Locking System
- Model 21041 - Features Combination Push Button Locking System
- Model 21042 - Features Electronic Push Button Locking System



386X 6-DRAWER SIDE CABINET

OVERALL:	DRS.	WIDTH	DEPTH	HEIGHT	NET WT	SHIP WT	CAPACITY
	6	13 5/8"	18"	33 1/8"	89 lbs.	94 lbs..	4,231 cu. in.
DRAWERS:	1	9 3/4"	16 1/2"	2"			120 lbs.
	4	9 3/4"	16 1/2"	4"			120 lbs.
	1	9 3/4"	16 1/2"	10"			240 lbs.

- Hangs on Either Side of Rolling Cabinet
- Ball-Bearing Drawer Slides
- Metal Thickness: Body - 18 ga. Drawers - 20 ga.
- Model 386X - Fits Models 376X, 378X, 10492, 10493, & 315X



185/185X 5-DRAWER SIDE CABINET

OVERALL:	DRS.	WIDTH	DEPTH	HEIGHT	NET WT	SHIP WT	CAPACITY
	5	13 5/8"	18"	29"	67/72 lbs.	71/76 lbs.	3,634 cu. in.
DRAWERS:	1	9 3/4"	16 1/2"	2"			120 lbs.
	3	9 3/4"	16 1/2"	4"			120 lbs.
	1	9 3/4"	16 1/2"	10"			240 lbs.

- Hangs on Either Side of Rolling Cabinet
- Metal Thickness: Body - 18 ga. Drawers - 20 ga.
- Model 185 - Features Friction Slides
- Model 185X - Features Ball-Bearing Slides
- Fits Models 273(X), 275(X), 277(X), 310X, & 10491



182X 2-SHELF SIDE LOCKER

OVERALL:	DRS.	WIDTH	DEPTH	HEIGHT	NET WT	SHIP WT	CAPACITY
	-	13 3/8"	18"	29"	45 lbs.	49 lbs.	5,500 cu. in.
SHELVES:	2	9 3/4"	16 1/2"	2"			120 lbs.

382X 2-SHELF SIDE LOCKER

OVERALL:	DRS.	WIDTH	DEPTH	HEIGHT	NET WT	SHIP WT	CAPACITY
	-	13 3/8"	18"	33 1/8"	53 lbs.	58 lbs.	6,300 cu. in.
SHELVES:	2	9 3/4"	16 1/2"	2"			120 lbs.

- Locking Door & 2 Adjustable Pull-Out Shelves with Ball-Bearing Slides.
- Hangs on Either Side of Your Roller Cabinet.
- Metal Thickness: Body - 18 ga. Drawers - 20 ga.
- Model 182X - Fits Models 273(X), 275(X), 277(X), 310(X), & 10491
- Model 382X - Fits Models 376X, 378X, 315X, 10492, & 10493



DS1 FOLD-AWAY CABINET SHELF

OVERALL:	DRS.	WIDTH	DEPTH	HEIGHT	NET WT	SHIP WT	CAPACITY
	-	20 1/8"	17 1/4"	1"	10.5 lbs.	11 lbs.	343 sq. in.

- Folds Flat When Not In Use
- Raised Sides Keep Tools From Falling Off
- Fits Any Industrial, Maintenance Pro, or Pro Line Roller Cabinet
- Weight Capacity: 40 lbs.



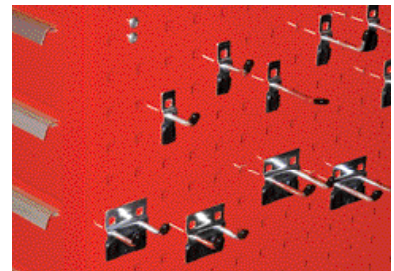
Shelf "Open"

Shelf "Closed"

TB18 18" HANG ON TOOLBOARD PANEL

OVERALL:	DRS.	WIDTH	DEPTH	HEIGHT	NET WT	SHIP WT	CAPACITY
	-	29"	18"	1/2"	9 lbs.	11 lbs.	-

- Reversible - Hangs on Either Side of Roller Cabinets
- 10 pc. Tool Holder Hook Set (99851)



K1800

CUSTOMIZED TO SUIT YOUR NEEDS

Contact a Kennedy® representative at **800-413-8665**

Customization options include but not limited to:

- Unique drawer configurations
- Custom color and color combinations
- Project planning/ Co-branding available



BK R BL BUR B YW UB

STANDARD COLORS

Customize the color of your products. Simply place one of the abbreviations at the end of the model number.

EXAMPLE: 520B



40+ ADDITIONAL

COLORS AVAILABLE

Custom colors can be matched to suit your project needs.

INDUSTRY SOLUTIONS



AEROSPACE



AUTO TECH



ENERGY



FACILITIES
MANAGEMENT



FLEET
MAINTENANCE



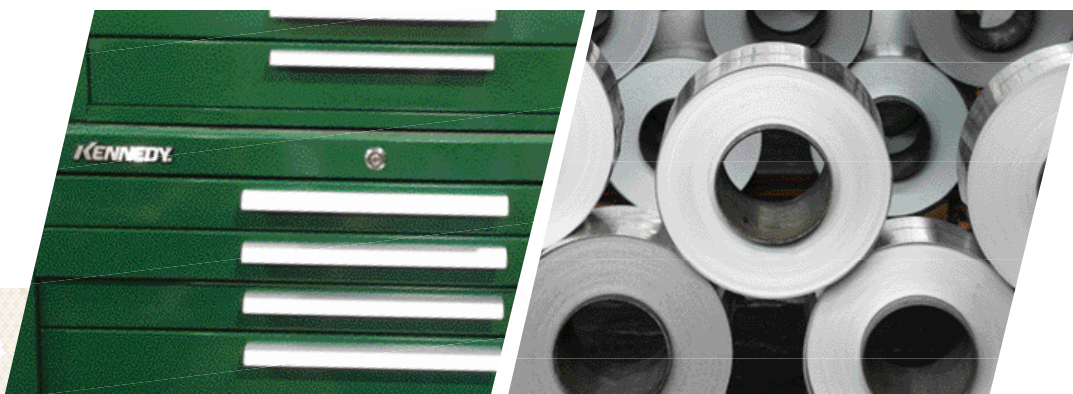
GENERAL
MANUFACTURING



MACHINE
SHOPS



VOTECH

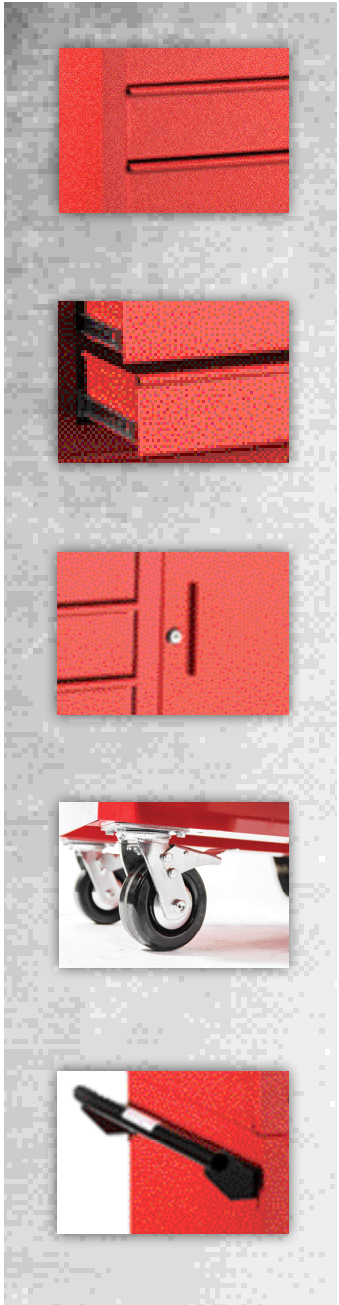


MADE IN THE USA

KENNEDYMFG.com



K1800



Industrial Grade
Paint Options

Ball-Bearing Drawer Slides
Hold Up to 100 lbs Per
Drawer


Standard Flat
Key Lock

5x1 1/4" Casters
800 lb. Total Load
Capacity

Heavy Duty
Side Handles

The K1800 Commercial is designed with the same Kennedy® quality for an exceptional value, helping you take charge of the down and dirty jobs.



 Available in black and red wrinkle only. Simply place one of the abbreviations at the end of the model number.
BKW RW

MADE IN THE USA

K1800 COMMERCIAL SERIES

40"

COMMERCIAL

4003C 3-DRAWER CHEST WITH COMPARTMENT

OVERALL:	DRS.	WIDTH	DEPTH	HEIGHT	NET WT	SHIP WT	CAPACITY
	3	39 3/8"	18"	16 1/2"	76 lbs.	80 lbs.	8,134 cu. in.
DRAWERS:	3	23"	16 1/2"	4"			100 lbs.
COMPARTMENT:	1	13 1/2"	17 3/4"	13 1/4"			

4010C 10-DRAWER ROLLER CABINET

OVERALL:	DRS.	WIDTH	DEPTH	HEIGHT	NET WT	SHIP WT	CAPACITY
	10	39 3/8"	18"	35"	175 lbs.	180 lbs.	11,551 cu. in.
LARGE BANK:	3	23"	16 1/2"	4"			100 lbs.
	2	23"	16 1/2"	6"			100 lbs.
SMALL BANK:	3	9 5/8"	16 1/2"	4"			100 lbs.
	2	9 5/8"	16 1/2"	6"			100 lbs.



27"

COMMERCIAL

173C 3-DRAWER CHEST

OVERALL:	DRS.	WIDTH	DEPTH	HEIGHT	NET WT	SHIP WT	CAPACITY
	3	27"	18"	16 5/8"	61 lbs.	65 lbs.	4,511 cu. in.
DRAWERS:	3	23"	16 1/2"	4"			100 lbs.

175C 5-DRAWER ROLLER CABINET

OVERALL:	DRS.	WIDTH	DEPTH	HEIGHT	NET WT	SHIP WT	CAPACITY
	5	27"	18"	35"	113 lbs.	120 lbs.	8,666 cu. in.
DRAWERS:	3	23"	16 1/2"	4"			100 lbs.
	2	23"	16 1/2"	6"			100 lbs.

