

Henkel – Your worldwide partner

U.S.A.

For your nearest authorized Loctite® brand distributor, to place an order, or for technical product assistance, call:
1.800.LOCTITE (562.8483)

Henkel Corporation

Engineering Adhesives
1001 Trout Brook Crossing
Rocky Hill, Connecticut 06067
Tel: 860.571.5100
Fax: 860.571.5465

Henkel Corporation

32100 Stephenson Highway
Madison Heights, Michigan 48071
Tel: 866.332.7024
Fax: 248.583.2976

Canada

Henkel Canada Corporation

Engineering Adhesives
2225 Meadowpine Blvd.
Mississauga, Ontario L5N 7P2
Tel: 1.800.263.5043 *(within Canada)*
Tel: 905.814.6511
Fax: 905.814.5391

Material Safety Data Sheets and Technical Data Sheets also available by 24-hour fax.

1.800.LOCTITE (562.8483)
1.800.263.5043 *(within Canada)*

Mexico

For your local Loctite® Adhesives and Sealants Specialist, for your nearest authorized Loctite® products distributor, to place an order, or for technical product assistance, call: 01 800 901 8100 (within Mexico)

Henkel Capital S.A. de C.V.

Boulevard Magnocentro No. 8 Piso 2
52760 Huixquilucan, Estado de Mexico
Technical Product Assistance:
01 800 901 8100 *(within Mexico)*

To place an order:

Tel: +52 (55) 5836 3644
Fax: +52 (55) 5787 9404
www.loctite.com.mx

Henkel Corporation
1001 Trout Brook Crossing
Rocky Hill, CT 06067
U.S.A.
www.henkelna.com
www.loctite.com/aam

® and ™ designate trademarks of Henkel Corporation or its affiliates. ® = registered in the U.S. Patent and Trademark Office. © Henkel Corporation, 2007. All rights reserved. 4343/LT-4756 (03/07)

LOCTITE®

Glass Maintenance & Repair Selector Guide





Loctite® 312™ Speedbonder™ Adhesive – Rearview Mirror Kit

Approved and used by GM, Ford and Daimler-Chrysler. Permanently remounts mirrors to windshields. Achieves handling strength in seconds; mirror-mounting strength in 15 minutes. Available in single and multi-application size packaging.

Typical Applications: Mounting rearview mirrors to windshields.

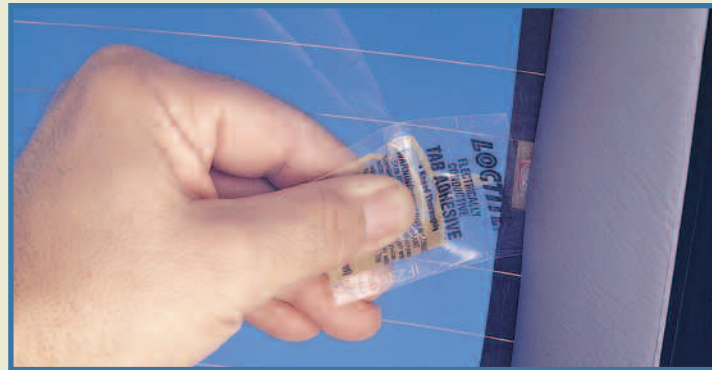
Item	Container Size	Pack
37438	.3 cc kit	12
03346	6 ml kit	12
03333	10 ml kit	10
03325	24 ml kit	5
00144	50 ml kit	5



Loctite® 736™ Primer NF™

Promotes the bond strength of Loctite® 312™ Speedbonder™ Adhesive to non-porous materials. Clean the bond area of dirt, oils, or other contaminants and then apply a generous amount of Loctite® 736™ Primer NF™ to the bond area.

Item	Container Size	Pack
73656	6 oz. aerosol	10



Loctite® Rear Window Defogger – Tab Adhesive

Quickly and easily bonds defogger tab to grid on rear window. Provides a low-cost, high-quality repair for damaged rear window defogger tabs. Complete kit for a quick repair.

Typical Applications: Rear window defogger tabs.

Item	Container Size	Pack
21351	.03/.02 fl. oz.	5



Loctite® Quick Set™ Auto Epoxy Adhesive

Fast curing, non-shrinking, colorless epoxy in convenient, 2-part dispensing syringe. Bonds most rigid materials. Resists most solvents. Versatile and shock resistant.

Typical Applications: Auto trim, ornaments, tools, emblems, knobs.

Item	Container Size	Pack
37514	1 fl. oz. kit	12



Loctite® Windshield & Glass Sealer

Wicking action silicone finds the leak. Flows into hidden and hard-to-reach areas. Forms a tough, waterproof, durable clear seal that is resistant to weather, extreme temperatures, vibration, shock, and most shop chemicals. Fills surface voids and irregularities. Temperature range: -80°F to 450°F.

Typical Applications: Windshields, sunroofs, windows, headlamp assemblies, marine glass, RV vents, and windows.

Item	Container Size	Pack
37471	1.31 fl. oz. tube	12



Loctite® Epoxy Mixer Cups – Fast Cure

Convenient pre-measured epoxy mixer cups. No mess, no guess, no waste. Ideal for bonding glass, hard plastics, rubber, and metal. Bonds in 5 to 15 minutes. Grey adhesive has excellent chemical resistance. Fills porosities and can be used to build up worn parts.

Typical Applications: Loose trim, broken grills, loose door glass channels, casting cracks and holes.

Item	Container Size	Pack
39089	4 pk - .12 oz. cups	6
37513	10 pk - .12 oz. cups	10



Loctite® All Purpose Spray Adhesive

Bonds lightweight, porous and non-porous surfaces. Allows repositionable and permanent bonds. Dries clear and fast; won't shrink or bleed. Resists water and humidity.

Typical Applications: Attaching upholstery cloth, carpeting, floor mats, insulation, kick and silencer pads to metal, wood or KB board.

Item	Container Size	Pack
30544	10.5 oz. aerosol can	12



Loctite® LocWeld™ Bonding Compound

A 15 minute, two-part adhesive and filler system that eliminates the need for welding or brazing. Once cured, it can be drilled, sanded, painted, or filed. Resists most automotive, shop and cleaning fluids. Withstands temperatures to 300°F intermittent. Over 3,000 psi shear strength on steel.

Typical Applications: Aluminum, steel, brass, bronze, castings, and stampings.

Item	Container Size	Pack
37531	2 pk - 1 oz. tubes	12





Loctite® 380™ Black Max® Instant Adhesive

For parts that encounter shock, vibration or thermal cycling, Loctite® 380™ Black Max® Instant Adhesive is the instant adhesive choice. This black, toughened cyanoacrylate adhesive uses elastomers to withstand impact and challenging environmental conditions. Seals as well as bonds. Works especially well bonding rubber to metal. Sheer strength to 3,750 psi. Fixtures in 90 seconds; full cure in 24 hours.

Typical Applications: Use for assembly of close-fitting parts made of metal, rubber, and plastic.

Item	Container Size	Pack
38050	1 oz. bottle	10



Loctite® 496™ Super Bonder® Instant Adhesive

A medium viscosity, high strength adhesive. Ideal for bonding rubber and metal. Suitable for gaps up to .006". Meets MIL-A-46050C, Type 1, Class 2.

Typical Applications: Rapid bonding of a wide variety of materials.

Item	Container Size	Pack
49650	1 oz. bottle	10



Loctite® QuickTite® Super Glue Gel

With the same superior performance as the liquid version, the no-run gel formula stays put for no-mess and precise application, even on vertical surfaces. The gel formula works on porous and non-porous materials.

Typical Applications: Metal, most plastics, rubber, vinyl, paper, wood, textiles, ceramics, china, and cork.

Item	Container Size	Pack
39123	4 g applicator	6



Loctite® QuickTite® Super Glue Gel compared to regular Super Glues

- | | |
|--|---|
| <ul style="list-style-type: none"> • Textiles • Chipboard • Brick • Synthetic Leather • Wood • Carton • Paper | <ul style="list-style-type: none"> • Vinyl • Leather • Cork • Rubber • Most Plastics • Ceramics • China • Metal |
|--|---|

REGULAR SUPER GLUES

MATERIAL

QUICKTITE® SUPER GLUE

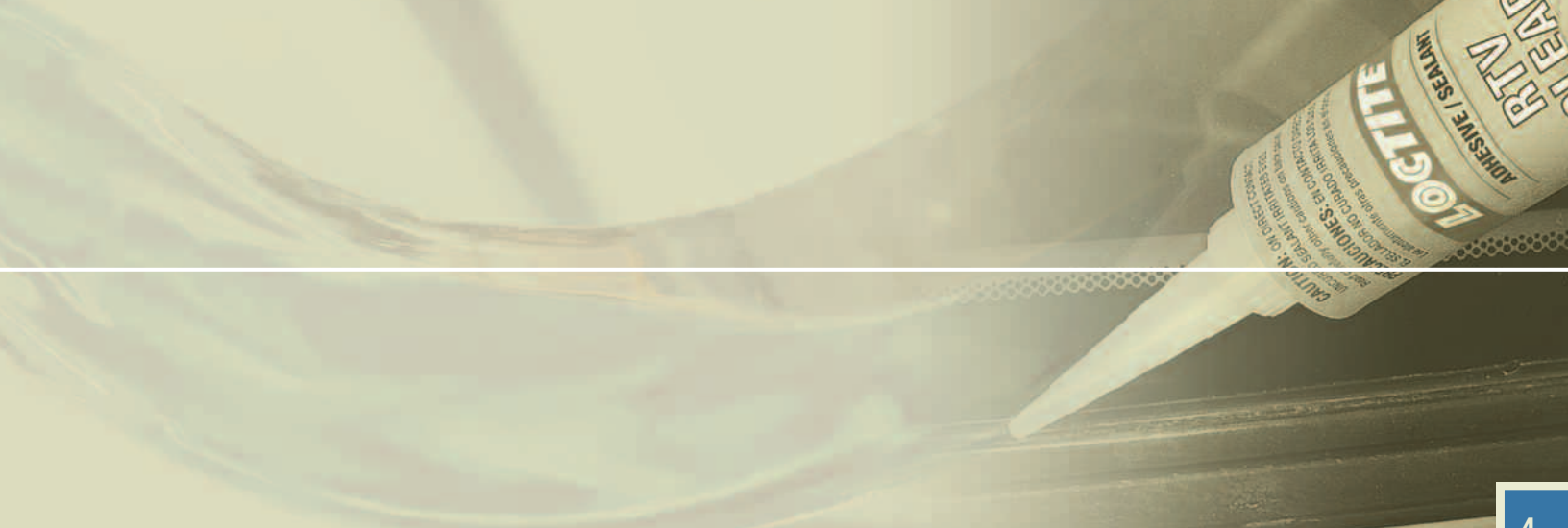


Loctite® Quick Gel® Super Glue

This gel formula super glue was designed for fast, heavy-duty repairs to vertical surfaces, where regular adhesive runs. Works on porous and non-porous materials.

Typical Applications: Metal, most plastics, laminated plastics, vinyl, rubber, ceramics, paper, wood, textiles, leather, synthetic leather, cork, and chipboard.

Item	Container Size	Pack
37391	2 g tube	12



Loctite® RTV Clear Silicone Adhesive/Sealant

General-purpose, clear RTV indoor/outdoor sealant. Seals, bonds, repairs, mends and secures glass, metal, plastics, fabric, vinyl, weatherstripping, and vinyl tops. Protects electrical wiring repairs. May be applied to horizontal or vertical surfaces. Waterproof and flexible. Temperature range: -80°F to 450°F; resists oil, water, weather, vibration and grease.

Typical Applications: Windshields, door frames, electrical connections, vinyl tops, seams, roofs.

Item	Container Size	Pack
37463	80 ml tube	12
40481	190 ml power can	6
37521	300 ml cartridge	10



Loctite® RTV Black Silicone Adhesive/Sealant

General-purpose, black RTV indoor/outdoor sealant. Seals, bonds, repairs, mends and secures glass, metal, plastics, fabric, vinyl, weatherstripping, and vinyl tops. Protects electrical wiring repairs. May be applied to horizontal or vertical surfaces. Waterproof and flexible. Temperature range: -80°F to 450°F; resists oil, water, weather, vibration and grease.

Typical Applications: Windshields, door frames, electrical connections, seams and roofs, vinyl tops, weatherstripping.

Item	Container Size	Pack
37460	80 ml tube	12
40464	190 ml power can	6
37523	300 ml cartridge	10



Loctite® Black Weatherstrip Adhesive

A professional, black weatherstrip adhesive that blends with automotive weatherstripping for less clean-up. Withstands temperature extremes. Resistant to gasoline, kerosene, antifreeze, and most solvents. Permanently bonds automotive weatherstripping. Bonds automotive gaskets. A superior adhesive for bonding a variety of common materials.

Typical Applications: Cut gaskets, auto or van carpeting, door and trunk moldings, vinyl tops, fabric-backed vinyl upholstery, headliners.

Item	Container Size	Pack
37532	5 oz. tube	12



Loctite® Yellow Weatherstrip Adhesive

A fast drying, high strength, waterproof adhesive that closely color matches original equipment materials. Professional strength bonds all types of weatherstripping materials and sunroof moldings. Resistant to oils, water and grease.

Typical Applications: Auto or van carpeting, all types of weatherstripping, door and trunk moldings.

Item	Container Size	Pack
40669	5 oz. tube	12



Loctite® Silicone Lubricant

Lubricates and waterproofs all types of mechanical equipment. Stops friction and squeaks. Coats hinges and channels. Prevents locks, doors and windows from binding. High silicone formula does not attract dust or dirt. Prevents binding, sticking, and deterioration.

Typical Applications: Lubricates door locks, trunk lids, brake cables, rubber molding.

Item	Container Size	Pack
37584	13 oz. aerosol can	12



Loctite® Silver Anti-Seize Stick

Loctite® Silver Anti-Seize Stick is a heavy-duty, temperature-resistant, petroleum-based lubricant compound fortified with graphite and metallic flake. Will not evaporate or harden in extreme cold or heat. Use during assembly to prevent seizing, galling, and corrosion. For use in assemblies up to 1600°F (871°C).

Typical Applications: For easy removal of spark plugs, cylinder head and exhaust head bolts.

Item	Container Size	Pack
37617	19 g stick	6



Loctite® Copper Anti-Seize Stick

Loctite® Copper Anti-Seize Stick provides a shield against high temperature seizing and galling. Studs, bolts, flanges and other mated parts can be removed easily in typical dry service temperatures up to 1800°F (982°C). The copper anti-seize stick can be used on copper, brass, cast iron, all steel alloys including stainless steel, all plastics, and all non-metallic gasketing materials.

Typical Applications: Spark plug threads installed in aluminum, exhaust manifold bolts, engine bolts, thermostat housing bolts, oxygen sensors, battery cable connections.

Item	Container Size	Pack
37616	19 g stick	6



Loctite® Blue Stick Threadlocker

This medium strength anaerobic threadlocker offers the same locking strength and sealing capabilities as our traditional blue threadlocking liquid, Loctite® Threadlocker 242®. This wax-like stick is conveniently packaged in a self-feeding stick applicator. Well-suited for difficult repairs, as in overhead applications. It can be applied to a part even if assembly is to take place at a later time, making the stick ideal for volume assembly. Removable with hand tools.

Typical Applications: Valve cover bolts, water pump bolts, oil pan bolts, drive shaft bolts, rocker arm adjustment nuts, carburetor studs.

Item	Container Size	Pack
37643	9 gm stick	10
37614	19 gm stick	6



Loctite® Red Stick Threadlocker

With the same convenient packaging as the medium strength Loctite® Blue Stick Threadlocker, this high strength threadlocker is better suited for heavy duty applications where resistance to heavy shock, vibration, and stress levels is required. Localized heating and hand tools are required to separate parts.

Typical Applications: Assembly with air tools, cylinder block bolts, ring gear bolts, transmission shaft bolts.

Item	Container Size	Pack
37701	9 g stick	10
37700	19 g stick	6



Loctite® Thread Sealant PST® Stick

The Loctite® Thread Sealant PST® Stick is a single component, semi-solid anaerobic pipe sealant compound. The self-feeding applicator stick facilitates application of the material where a conventional liquid or paste would be difficult to use. Loctite® Thread Sealant PST® Stick cures rapidly to provide immediate low pressure sealing. The controlled lubricity prevents galling and protects mated threaded areas from rust and corrosion and eases disassembly. Recommended for sealing metal tapered pipe threads and fittings in automotive applications.

Typical Applications: Stainless steel fittings, oil and coolant lines, fuel fittings, rear axle fill plug, intake manifold switches, head bolts into through holes, oil psi sending units and sensors.

Item	Container Size	Pack
37615	19 g stick	6



Loctite® Thread Treatment Sticks Kit

One of the most significant innovations in the 50-year history of Henkel Corporation – SOLID formula Loctite® Thread

Treatment Sticks. Now conveniently packaged in a kit designed to give you all five products in one part number. Upside down, right side up, or any angle in between, these Sticks deliver!

Item	Container Size	Pack
38725	5 item kit	5



PART NUMBER	PRODUCT NAME	PAGE NUMBER
00144	Loctite® 312™ Speedbonder™ Adhesive – Rearview Mirror Kit	1
03325	Loctite® 312™ Speedbonder™ Adhesive – Rearview Mirror Kit	1
03333	Loctite® 312™ Speedbonder™ Adhesive – Rearview Mirror Kit	1
03346	Loctite® 312™ Speedbonder™ Adhesive – Rearview Mirror Kit	1
21351	Loctite® Rear Window Defogger – Tab Adhesive	1
30544	Loctite® All Purpose Spray Adhesive	2
37391	Loctite® Quick Gel® Super Glue	3
37471	Loctite® Windshield & Glass Sealer	2
37438	Loctite® 312™ Speedbonder™ Adhesive – Rearview Mirror Kit	1
37460	Loctite® RTV Black Silicone Adhesive/Sealant	4
37463	Loctite® RTV Clear Silicone Adhesive/Sealant	4
37513	Loctite® Epoxy Mixer Cups – Fast Cure	2
37514	Loctite® Quick Set™ Auto Epoxy Adhesive	1
37521	Loctite® RTV Clear Silicone Adhesive/Sealant	4
37523	Loctite® RTV Black Silicone Adhesive/Sealant	4
37531	Loctite® LocWeld™ Bonding Compound	2
37532	Loctite® Black Weatherstrip Adhesive	4
37584	Loctite® Silicone Lubricant	4
37614	Loctite® Blue Stick Threadlocker	5
37615	Loctite® Thread Sealant PST® Stick	5
37616	Loctite® Copper Anti-Seize Stick	5
37617	Loctite® Silver Anti-Seize Stick	5
37643	Loctite® Blue Stick Threadlocker	5
37700	Loctite® Red Stick Threadlocker	5
37701	Loctite® Red Stick Threadlocker	5
38050	Loctite® 380™ Black Max® Instant Adhesive	3
38725	Loctite® Thread Treatment Sticks Kit	5
39089	Loctite® Epoxy Mixer Cups – Fast Cure	2
39123	Loctite® QuickTite® Super Glue Gel	3
40464	Loctite® RTV Black Silicone Adhesive/Sealant	4
40481	Loctite® RTV Clear Silicone Adhesive/Sealant	4
40669	Loctite® Yellow Weatherstrip Adhesive	4
49650	Loctite® 496™ Super Bonder® Instant Adhesive	3
73656	Loctite® 736™ Primer NF™	1