



Shell Mill & Face Mill Holder Features

Our Shell Mill Holders are available in a wide variety of tapers and sizes, including CAT, BT, HSK, and R8. Both metric and inch sizes are available, accommodating face mills with bore diameters ranging from 1/2" (12mm) to 2" (50mm).

Taper ground to AT3 or better to ensure 80% taper contact

h6 precision ground pilot for concentric and repeatable mounting of shell mill

Surface ground to maintain .0002" perpendicularity to centerline ensuring flat engagement of shell mill

Nickel Chrome Molybdenum Alloy body

Keys included as standard for quick set up

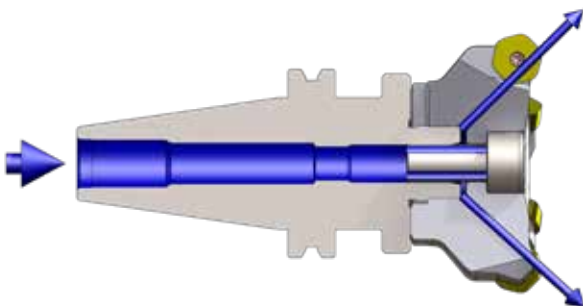
Heat-treated carbon steel nut prevents wear and increases clamping pressure

Shell Mill Holder

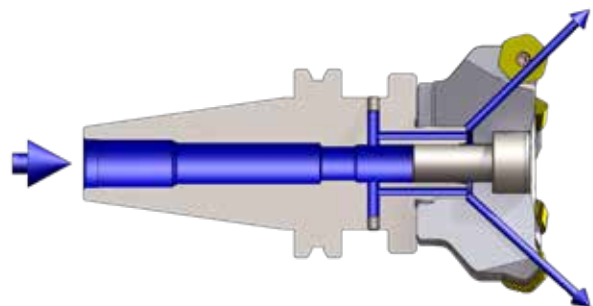
Face Mill Holder

Coolant-Thru Applications

For Coolant-Thru Shell Mill



A. With coolant slotted bolt (grooves along the bolt): coolant applied through body of the shell mill.



B. Modified Shell Mill holder to supply coolant through the sides. Please contact us for more information.

CAT Shell Mill Holders

**T.I.R.:** <.00015" run out at pilot

Milling

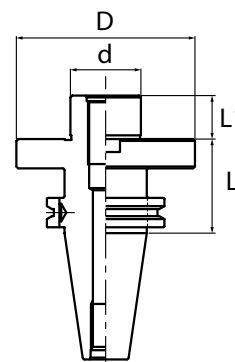
**Speed:** up to 30,000 rpm**Set-up:** quick and easy**Coolant-Thru:** thru-pilot (optional)

Please note that the maximum RPM listed in our catalog may vary depending on the toolholder shank, weight, balanceability and the G rating.

- Accommodates face mills with bore diameters ranging from 1/2" (12mm) to 2" (50mm)
- Pilot diameter sized for precision fit with cutter
- Removable/replaceable drive keys as standard
- Fine thread locking screw included
- AT3 or better taper
- Available in high-speed balanceable versions

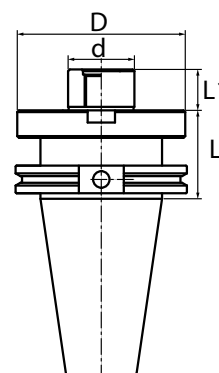
CAT40 - Inch

Part Number	d	L	D	L1	Key Size	Arbor Thread
C4001-0500-1.75	1/2"	1.75"	1.378"	0.57"	1/4"	1/4"-28
C4001-0750-1.75	3/4"	1.75"	1.929"	0.67"	5/16"	3/8"-24
C4011-0750-4.00	3/4"	4.00"	1.929"	0.67"	5/16"	3/8"-24
C4001-1000-1.75	1"	1.75"	2.382"	0.67"	3/8"	1/2"-20
C4011-1000-4.00	1"	4.00"	2.382"	0.67"	3/8"	1/2"-20
C4001-1250-2.00	1-1/4"	2.00"	2.882"	0.67"	1/2"	5/8"-18
C4011-1250-4.00	1-1/4"	4.00"	2.882"	0.67"	1/2"	5/8"-18
C4001-1500-2.00	1-1/2"	2.00"	3.799"	0.93"	5/8"	3/4"-16
C4011-1500-4.00	1-1/2"	4.00"	3.799"	0.93"	5/8"	3/4"-16

Available in **TAPER PLUS**  Dual-taper and flange contact

CAT50 - Inch

Part Number	d	L	D	L1	Key Size	Arbor Thread
C5001-0750-1.75	3/4"	1.75"	1.929"	0.67"	5/16"	3/8"-24
C5011-0750-4.00	3/4"	4.00"	1.929"	0.67"	5/16"	3/8"-24
C5021-0750-6.00	3/4"	6.00"	1.929"	0.67"	5/16"	3/8"-24
C5031-0750-8.00	3/4"	8.00"	1.929"	0.67"	5/16"	3/8"-24
C5001-1000-1.75	1"	1.75"	2.382"	0.69"	3/8"	1/2"-20
C5011-1000-4.00	1"	4.00"	2.382"	0.69"	3/8"	1/2"-20
C5021-1000-6.00	1"	6.00"	2.382"	0.69"	3/8"	1/2"-20
C5031-1000-8.00	1"	8.00"	2.382"	0.69"	3/8"	1/2"-20
C5001-1250-1.75	1-1/4"	1.75"	2.882"	0.69"	1/2"	5/8"-18
C5011-1250-4.00	1-1/4"	4.00"	2.882"	0.69"	1/2"	5/8"-18
C5021-1250-6.00	1-1/4"	6.00"	2.882"	0.69"	1/2"	5/8"-18
C5031-1250-8.00	1-1/4"	8.00"	2.882"	0.69"	1/2"	5/8"-18
C5001-1500-2.00	1-1/2"	2.00"	3.799"	0.93"	5/8"	3/4"-16
C5011-1500-4.00	1-1/2"	4.00"	3.799"	0.93"	5/8"	3/4"-16
C5021-1500-6.00	1-1/2"	6.00"	3.799"	0.93"	5/8"	3/4"-16
C5031-1500-8.00	1-1/2"	8.00"	3.799"	0.93"	5/8"	3/4"-16
C5001-2000-2.00	2"	2.00"	4.382"	0.93"	3/4"	1"-14
C5011-2000-4.00	2"	4.00"	4.382"	0.93"	3/4"	1"-14

Available in **TAPER PLUS**  Dual-taper and flange contact

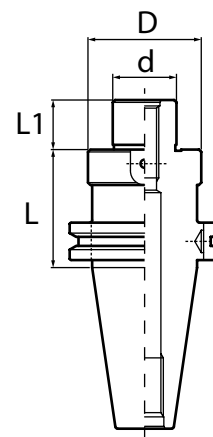
All Shell Mill Holders are center thru-coolant capable. Arbor screws are not coolant-thru but can be modified to facilitate coolant capabilities. See shell mill manufacturer specifications to determine modification requirements.

Replacement Keys
Page 147Replacement Arbor Screws
Page 147

CAT Shell/Face Mill Holders

CAT40 - Metric

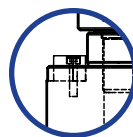
Part Number	d	L	D	L1	Key Size	Arbor Thread
C4001-22-50*	22mm	50mm	40mm	19mm	10mm	M10
C4001-27-50	27mm	50mm	48mm	21mm	12mm	M12
C4001-32-50	32mm	50mm	58mm	24mm	14mm	M16
C4001-40-60	40mm	60mm	67mm	27mm	16mm	M20



CAT50 - Metric

Part Number	d	L	D	L1	Key Size	Arbor Thread
C5001-22-60*	22mm	60mm	40mm	19mm	10mm	M10
C5001-27-60	27mm	60mm	48mm	21mm	12mm	M12
C5001-32-60	32mm	60mm	58mm	24mm	14mm	M16
C5001-40-60	40mm	60mm	67mm	27mm	16mm	M20

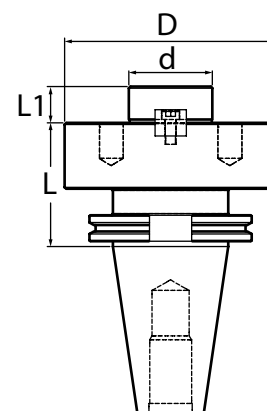
Note: *Drive Keys for this part number are positioned horizontally.



CAT50 - Inch Face Mill Holders

Part Number	d	L	D	L1	Key Size
C50F1-2500-2.95	2-1/2"	2.95"	5.00"	1.18"	1.00"

Note: Face Mill Holders are supplied with four 5/8-11 mounting bolts. Pitch circle diameter is 4".



All Shell Mill Holders are center thru-coolant capable. Arbor screws are not coolant-thru but can be modified to facilitate coolant capabilities. See shell mill manufacturer specifications to determine modification requirements.



Replacement Keys
Page 147



Replacement Arbor Screws
Page 147

BT Shell Mill Holders

**T.I.R.:** <.00015" run out at pilot

Milling

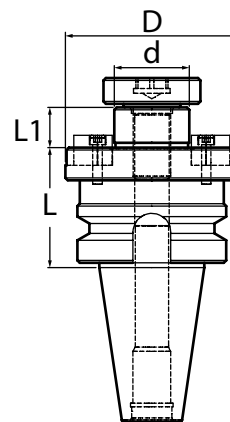
**Speed:** up to 30,000 rpm**Set-up:** quick and easy**Coolant-Thru:** thru-pilot (optional)

Please note that the maximum RPM listed in our catalog may vary depending on the toolholder shank, weight, balanceability and the G rating.

- Accommodates face mills with bore diameters ranging from 1/2" (12mm) to 2" (50mm)
- Pilot diameter sized for precision fit with cutter
- Removable/replaceable drive keys as standard
- Fine thread locking screw included
- AT3 or better taper
- Available in high-speed balanceable versions

BT30 - Inch

Part Number	d	L	D	L1	Key Size	Arbor Thread
B3001-0500-1.19	1/2"	1.19"	1.378"	0.57"	1/4"	1/4"-28
B3001-0750-1.19	3/4"	1.19"	2.000"	0.67"	5/16"	3/8"-24
B3001-1000-1.19	1"	1.19"	2.382"	0.67"	3/8"	1/2"-20

Available in **TAPER PLUS**  Dual-taper and flange contact

BT40 - Inch

Part Number	d	L	D	L1	Key Size	Arbor Thread
B4001-0750-1.75	3/4"	1.75"	1.929"	0.67"	5/16"	3/8"-24
B4001-1000-1.75	1"	1.75"	2.382"	0.67"	3/8"	1/2"-20
B4001-0500-1.75	1/2"	1.75"	1.378"	0.57"	1/4"	1/4"-28
B4001-1500-2.00	1-1/2"	2.00"	3.799"	0.92"	5/8"	3/4"-16

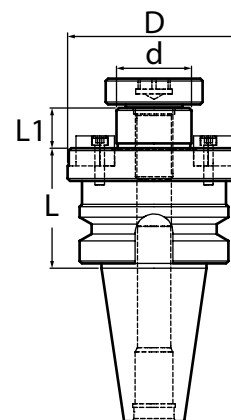
All Shell Mill Holders are center thru-coolant capable. Arbor screws are not coolant-thru but can be modified to facilitate coolant capabilities. See shell mill manufacturer specifications to determine modification requirements.

Replacement Keys
Page 147Replacement Arbor Screws
Page 147

BT Shell/Face Mill Holders

BT50 - Inch

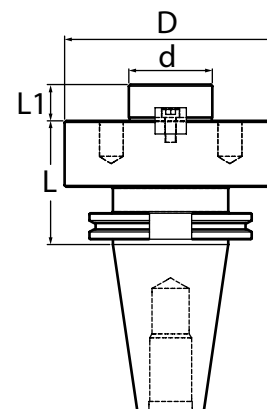
Part Number	d	L	D	L1	Key Size	Arbor Thread
B5001-0750-1.75	3/4"	1.75"	1.929"	0.67"	5/16"	3/8"-24
B5001-1000-1.75	1"	1.75"	2.382"	0.68"	3/8"	1/2"-20
B5011-1000-4.00	1"	4.00"	2.382"	0.68"	3/8"	1/2"-20
B5021-1000-6.00	1"	6.00"	2.382"	0.68"	3/8"	1/2"-20
B5001-1250-2.00	1-1/4"	2.00"	2.882"	0.68"	1/2"	5/8"-18
B5021-1500-6.00	1-1/2"	6.00"	3.799"	0.93"	5/8"	3/4"-16
B5001-2000-2.00	2"	2.00"	4.382"	0.93"	3/4"	1"-14



BT50 - Inch Face Mill Holders

Part Number	d	L	D	L1	Key Size
B50F1-2500-3.00	2-1/2"	3.00"	5.00"	1.18"	1"

Note: Face Mill Holders are supplied with four 5/8-11 mounting bolts. Pitch circle diameter is 4".



All Shell Mill Holders are center thru-coolant capable. Arbor screws are not coolant-thru but can be modified to facilitate coolant capabilities. See shell mill manufacturer specifications to determine modification requirements.



Replacement Keys
Page 147



Replacement Arbor Screws
Page 147

HSK Shell Mill Holders

**T.I.R.:** <.00015" run out at pilot

Milling

**Speed:** up to 30,000 rpm**Set-up:** quick and easy**Coolant-Thru:** thru-pilot
(optional)

Please note that the maximum RPM listed in our catalog may vary depending on the toolholder shank, weight, balanceability and the G rating.

- Accommodates face mills with bore diameters ranging from 1/2" (12mm) to 2" (50mm)
- Pilot diameter sized for precision fit with cutter
- Removable/replaceable drive keys as standard
- Fine thread locking screw included
- AT3 or better taper

HSK40A/63A

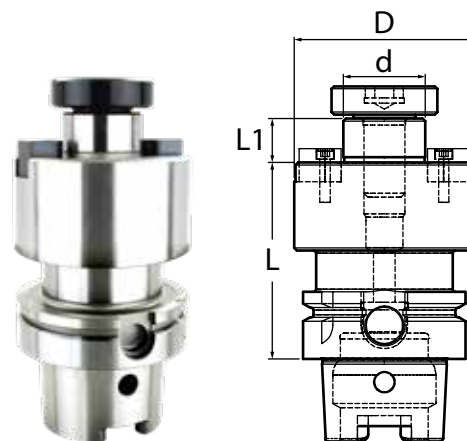
Part Number	d	L	D	L1	Key Size	Arbor Thread
HSK40A-SM0750-60	3/4"	2.36"	1.69"	0.67"	5/16"	3/8"-24
HSK40A-SM1000-60	1"	2.36"	2.17"	0.67"	3/8"	1/2"-20
HSK63A-SM0750-3.00	3/4"	3.00"	1.693"	0.669"	5/16"	3/8"-24
HSK63A-SM0750-5.00	3/4"	5.00"	1.693"	0.669"	5/16"	3/8"-24
HSK63A-SM1000-3.00	1"	3.00"	2.165"	0.669"	3/8"	1/2"-20
HSK63A-SM1000-5.00	1"	5.00"	2.165"	0.669"	3/8"	1/2"-20
HSK63A-SM1250-3.00	1-1/4"	3.00"	2.756"	0.669"	1/2"	5/8"-18
HSK63A-SM1250-5.00	1-1/4"	5.00"	2.756"	0.669"	1/2"	5/8"-18

Note: Coolant tube and coolant tube wrench are not included. See page 147 for more details.

HSK100A

Part Number	d	L	D	L1	Key Size	Arbor Thread
HSK100A-SM0750-4.00	3/4"	4.00"	1.693"	0.669"	5/16"	3/8"-24
HSK100A-SM0750-6.00	3/4"	6.00"	1.693"	0.669"	5/16"	3/8"-24
HSK100A-SM1000-4.00	1"	4.00"	2.165"	0.669"	3/8"	1/2"-20
HSK100A-SM1000-6.00	1"	6.00"	2.165"	0.669"	3/8"	1/2"-20
HSK100A-SM1250-4.00	1-1/4"	4.00"	2.756"	0.669"	1/2"	5/8"-18
HSK100A-SM1250-6.00	1-1/4"	6.00"	2.756"	0.669"	1/2"	5/8"-18
HSK100A-SM1500-4.00	1-1/2"	4.00"	3.504"	0.902"	5/8"	3/4"-16
HSK100A-SM1500-6.00	1-1/2"	6.00"	3.504"	0.902"	5/8"	3/4"-16
HSK100A-SM2000-4.00	2"	4.00"	4.488"	0.902"	3/4"	1"-14

Note: Coolant tube and coolant tube wrench are not included. See page 147 for more details.



All Shell Mill Holders are center thru-coolant capable. Arbor screws are not coolant-thru but can be modified to facilitate coolant capabilities. See shell mill manufacturer specifications to determine modification requirements.



Replacement Keys
Page 147



Replacement Arbor Screws
Page 147

NMTB Shell/Face Mill Holders



T.I.R.: <.00015" run out at pilot



Set-up: quick and easy



Coolant-Thru: thru-pilot (optional)



Milling

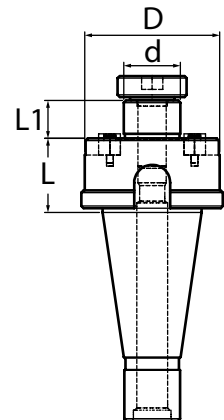
- Accommodates face mills with bore diameters ranging from 1/2" (12mm) to 2" (50mm)
- Pilot diameter sized for precision fit with cutter
- Removable/replaceable drive keys as standard
- Fine thread locking screw included
- AT3 or better taper

Please note that the maximum RPM listed in our catalog may vary depending on the toolholder shank, weight, balanceability and the G rating.

NMTB30/40/50

Part Number	Taper	d	L	D	L1	Key Size	Arbor Thread
N3001-0750-1.31	NMTB30	3/4"	1.31"	1.929"	0.67"	5/16"	3/8"-24
N3001-1000-1.31	NMTB30	1"	1.31"	2.382"	0.67"	3/8"	1/2"-20
N3001-1250-1.44	NMTB30	1-1/4"	1.44"	2.882"	0.67"	1/2"	5/8"-18
N4001-0750-0.87	NMTB40	3/4"	0.87"	1.937"	0.67"	5/16"	3/8"-24
N4001-1000-1.31	NMTB40	1"	1.31"	2.382"	0.67"	3/8"	1/2"-20
N4001-1500-1.63	NMTB40	1-1/2"	1.63"	3.500"	0.93"	5/8"	3/4"-16
N5001-1500-1.88	NMTB50	1-1/2"	1.88"	3.500"	0.93"	5/8"	3/4"-16

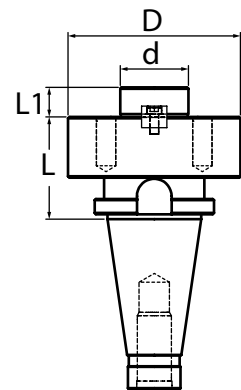
Note: NMTB shanks are suitable for use with Erickson Quick Change spindles.



NMTB50 - Face Mill Holders

Part Number	Taper	d	L	D	L1	Key Size
N50F1-2500-3.00	NMTB50	2-1/2"	3.00"	5.00"	1.18"	1"

Note: NMTB shanks are suitable for use with Erickson Quick Change spindles. Face Mill Holders are supplied with four 5/8-11 mounting bolts. Pitch circle diameter is 4".



All Shell Mill Holders are center thru-coolant capable. Arbor screws are not coolant-thru but can be modified to facilitate coolant capabilities. See shell mill manufacturer specifications to determine modification requirements.



Replacement Keys
Page 147



Replacement Arbor Screws
Page 147

R8 Shell Mill Holder



T.I.R.: <.00015" run out at pilot



Milling



Set-up: quick and easy



Coolant-Thru: thru-pilot
(optional)

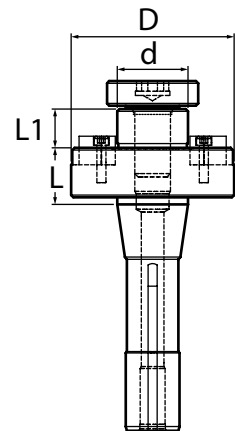
Please note that the maximum RPM listed in our catalog may vary depending on the toolholder shank, weight, balanceability and the G rating.

- Accommodates face mills with bore diameters ranging from 1/2" (12mm) to 1.5" (38.1mm)
- Pilot diameter sized for precision fit with cutter
- Removable/replaceable drive keys as standard
- Fine thread locking screw included
- AT3 or better taper

R8

Part Number	Taper	d	L	D	L1	Key Size	Arbor Thread
850-032-1.00	R8	1/2"	1.00"	1.38"	0.57"	1/4"	1/4"-28
850-048-1.00	R8	3/4"	1.00"	2.00"	0.69"	5/16"	3/8"-24
850-064-1.00	R8	1"	1.00"	2.38"	0.69"	3/8"	1/2"-20
850-080-1.00	R8	1-1/4"	1.00"	2.88"	0.69"	1/2"	5/8"-18
850-096-1.75	R8	1-1/2"	1.75"	3.50"	0.94"	5/8"	3/4"-16

All Shell Mill Holders are center thru-coolant capable. Arbor screws are not coolant-thru but can be modified to facilitate coolant capabilities. See shell mill manufacturer specifications to determine modification requirements.



Lyndex-Nikken Offers Single and Dual Plane Balancing for Large Diameter or Long Tooling Assemblies

Benefits of Shell Mill Holder Balancing:

- Balanced assemblies can reduce spindle vibration—prolonging the life of your cutting tools and spindle.
- Increase the quality and consistency of machined surface finishes.
- Achieves greater machined surface flatness.
- Balancing service is only required once during initial set up. Assembly balance is maintained until shell mill/face mill is removed.



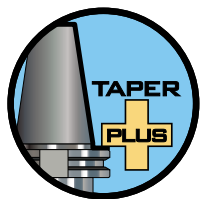
Replacement Keys
Page 147



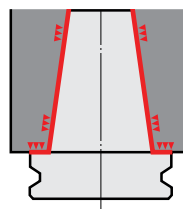
Replacement Arbor Screws
Page 147

Taper Plus CAT/BT - Face/Shell Mill Holders

Taper Plus Advantages

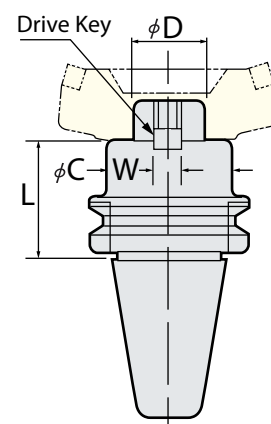


- Outstanding runout accuracy for longer tool life
- Vibration dampening for increased productivity
- High rigidity for smooth and stable cutting
- Interchangeable between standard and dual face contact spindles
- 53% more surface area contact than just the taper alone



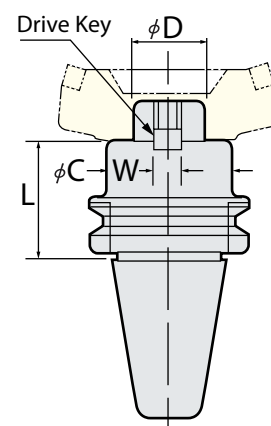
Taper Plus - CAT40

Part Number	L	C	D	Drive Key (W)
NC4001-0750-1.75	1.75"	1.929"	0.750"	0.3125"
NC4001-1000-1.75	1.75"	2.382"	1.000"	0.375"
NC4001-1250-2.00	2.00"	2.882"	1.250"	0.500"
NC4001-1500-2.00	2.00"	3.799"	1.500"	0.625"
NC4011-0750-4.00	4.00"	1.929"	0.750"	0.3125"
NC4011-1000-4.00	4.00"	2.382"	1.000"	0.375"
NC4011-1250-4.00	4.00"	2.882"	1.250"	0.500"



Taper Plus - CAT50

Part Number	L	C	D	Drive Key (W)
NC5001-0750-1.75	1.75"	1.929"	0.750"	0.3125"
NC5001-1000-1.75	1.75"	2.382"	1.000"	0.375"
NC5001-1250-1.75	1.75"	2.882"	1.250"	0.500"
NC5001-1500-2.00	2.00"	3.799"	1.500"	0.625"
NC5001-2000-2.00	2.00"	4.382"	2.000"	0.750"
NC5011-0750-4.00	4.00"	1.929"	0.750"	0.3125"
NC5011-1000-4.00	4.00"	2.382"	1.000"	0.375"
NC5011-1250-4.00	4.00"	2.882"	1.250"	0.500"
NC5011-1500-4.00	4.00"	3.799"	1.500"	0.625"
NC5021-0750-6.00	6.00"	1.929"	0.750"	0.3125"
NC5021-1000-6.00	6.00"	2.382"	1.000"	0.375"
NC5021-1250-6.00	6.00"	2.882"	1.250"	0.500"
NC5021-1500-6.00	6.00"	3.799"	1.500"	0.625"
NC5031-0750-8.00	8.00"	1.929"	0.750"	0.3125"
NC5031-1000-8.00	8.00"	2.382"	1.000"	0.375"
NC5031-1500-8.00	8.00"	3.799"	1.500"	0.625"
NC50F1-2500-2.95	2.95"	5.000"	2.500"	1.000"



Taper Plus - BT30

Part Number	L	C	D	Drive Key (W)
NB3001-0750-1.19	1.19"	1.929"	0.750"	0.3125"
NB3001-1000-1.19	1.19"	2.382"	1.000"	0.375"



Replacement Keys
Page 147



Replacement Arbor Screws
Page 147

Shell Mill Holder Accessories

Replacement Keys

Part Number	Description	To Use with Holder Size
1/2-KEYSET	1/4" rotating pins (2 Pcs.)	1/2"
3/4-KEYSET	5/16" keys with screws (2 Pcs.)	3/4"
1-KEYSET	3/8" keys with screws (2 Pcs.)	1"
1-1/4-KEYSET	1/2" keys with screws (2 Pcs.)	1-1/4"
1-1/2-KEYSET	5/8" keys with screws (2 Pcs.)	1-1/2"
2-KEYSET	3/4" keys with screws (2 Pcs.)	2"
2-1/2-KEYSET	1" keys with screws (2 Pcs.)	2-1/2"
22-KEYSET	10mm keys with screws (2 Pcs.)	22mm
27-KEYSET	12mm keys with screws (2 Pcs.)	27mm
32-KEYSET	14mm keys with screws (2 Pcs.)	32mm
40-KEYSET	16mm keys with screws (2 Pcs.)	40mm

Replacement Arbor Screws

Part Number	Head Diameter	Head Thickness	For the Following Shell/ Face Mill Sizes
A5/8-11	23.65mm (0.931")	15.7mm (0.618")	Face Mill Mounting Bolt
A1/4-28	17mm (0.669")	6mm (0.236")	1/2"
A1/4-28SL*	17mm (0.669")	6mm (0.236")	1/2"
A3/8-24	23.5mm (0.925")	8mm (0.315")	3/4"
A3/8-24SL*	23.5mm (0.925")	8mm (0.315")	3/4"
A1/2-20	31mm (1.220")	9.5mm (0.374")	1"
A1/2-20SL*	31mm (1.220")	9.5mm (0.374")	1"
A5/8-18	41mm (1.614")	11mm (0.433")	1-1/4"
A5/8-18SL*	41mm (1.614")	11mm (0.433")	1-1/4"
A3/4-16	49mm (1.929")	12.7mm (0.500")	1-1/2"
A3/4-16SL*	49mm (1.929")	12.7mm (0.500")	1-1/2"
A1-14	68mm (2.677")	18mm (0.709")	2"
A1-14SL*	68mm (2.677")	18mm (0.709")	2"
A10mm-P1.5	16mm (0.630")	10mm (0.394")	22.0mm
A12mm-P1.75	18mm (0.709")	12mm (0.472")	27.0mm
A16mm-P2	24mm (0.945")	16mm (0.630")	32.0mm
A20mm-P2.5	30mm (1.181")	20mm (0.787")	40.0mm

Note: *"SL" denotes a Slotted Arbor Screw.

Coolant Tube Wrench for HSK Holders

Part Number	Description
HSK40-WRENCH	Wrench for HSK40 Coolant Tube
HSK63-WRENCH	Wrench for HSK63 Coolant Tube
HSK100-WRENCH	Wrench for HSK100 Coolant Tube

Coolant tube wrenches are needed to remove or install coolant tubes in HSK toolholders.

Coolant Tube for HSK Holders

Part Number	Description
HSK40-TUBE	HSK40 Coolant Tube
HSK63-TUBE	HSK63 Coolant Tube
HSK100-TUBE	HSK100 Coolant Tube



HIGH PERFORMANCE LIVE TOOLS

**LYNDEX
NIKKEN**
PRECISION FIRST

**A COMPLETE LINE OF STATIC
AND LIVE TOOLING FOR DMG MORI,
MAZAK, OKUMA AND MORE -
IN STOCK!**

What makes our Live Tools Unique?

DESIGN AND ENGINEERING

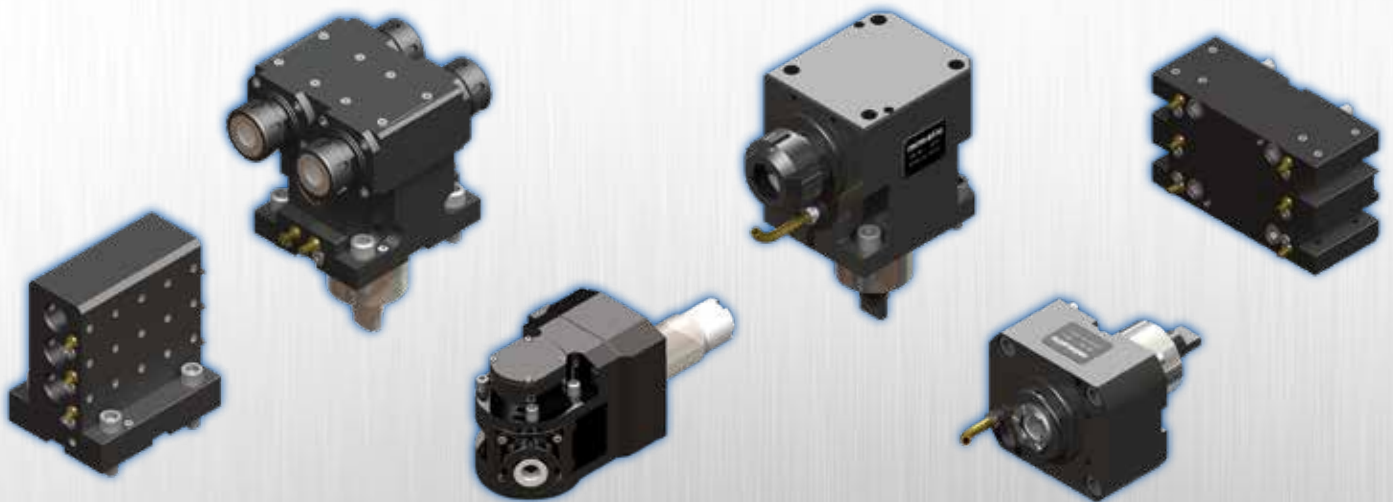
- Nickel Chrome Molybdenum body
- Ground features to ensure optimal concentricity
- ABEC 7 angular contact bearings for highest run-out precision
- Run-out guarantee of under 5 micron repeatability at collet nose

Gears for Stability

- Hand-matched gears for minimal backlash
- Spiral bevel gears maximizes drive torque
- Optimal bearing placement for balanced torque stress

Protective Seals

- Labyrinth Seals with unique multi-barrier construction prevent contaminants from entering the main chamber



Phone: (847) 367-4800



Email: sales@lyndexnikken.com



www.lyndexnikken.com

Connect with us on our
social media channels!

