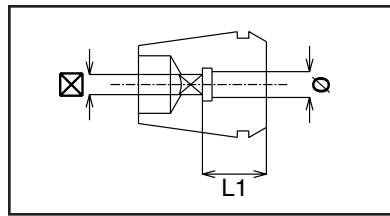


ER Tap Collets



ER Tap Collets feature a unique design that incorporates an internal square drive with our popular ER Series Collets. The square drive matches the tap square, providing a tight fit for all rigid tapping applications.

Part Number	ER Series	Tap Inch Size	Tap Metric Size	L1 (mm)	Ø	⊠
ET16-168	ER16	#8, 5/32"	M4	15	0.168	0.131
ET16-194	ER16	#10, 3/16"	M4.5, M5	15	0.194	0.152
ET16-220	ER16	#12, 7/32"	-	15	0.220	0.165
ET16-255	ER16	#14, 1/4"	M6, M6.5	22	0.255	0.191
ET20-168	ER20	#8, 5/32"	M4	15	0.168	0.131
ET20-194	ER20	#10, 3/16"	M4.5, M5	15	0.194	0.152
ET20-220	ER20	#12, 7/32"	-	15	0.220	0.165
ET20-255	ER20	#14, 1/4"	M6, M6.5	20	0.255	0.191
ET20-318	ER20	5/16"	M7, M6.5	20	0.318	0.238
ET20-323	ER20	7/16"	-	20	0.323	0.242
ET20-367	ER20	1/2"	M12, M12.5	25	0.367	0.275
ET20-381	ER20	3/8"	M10	20	0.381	0.286
ET25-168	ER25	#8, 5/32"	M4	15	0.168	0.131
ET25-194	ER25	#10, 3/16"	M4.5, M5	15	0.194	0.152
ET25-220	ER25	#12, 7/32"	-	15	0.220	0.165
ET25-255	ER25	#14, 1/4"	M6, M6.5	20	0.255	0.191
ET25-318	ER25	5/16"	M7, M6.5	20	0.318	0.238
ET25-323	ER25	7/16"	-	20	0.323	0.242
ET25-367	ER25	1/2"	M12, M12.5	25	0.367	0.275
ET25-381	ER25	3/8"	M10	20	0.381	0.286
ET25-429	ER25	9/16"	M14	25	0.429	0.322
ET25-437	ER25	1/8" NPT(L)	-	18	0.437	0.328
ET25-480	ER25	5/8"	M16	25	0.480	0.360
ET32-168	ER32	#8, 5/32"	M4	15	0.168	0.131
ET32-194	ER32	#10, 3/16"	M4.5, M5	15	0.194	0.152
ET32-220	ER32	#12, 7/32"	-	15	0.220	0.165
ET32-255	ER32	#14, 1/4"	M6, M6.5	20	0.255	0.191
ET32-318	ER32	5/16"	M7, M6.5	20	0.318	0.238
ET32-323	ER32	7/16"	-	20	0.323	0.242
ET32-367	ER32	1/2"	M12, M12.5	25	0.367	0.275
ET32-381	ER32	3/8"	M10	20	0.381	0.286
ET32-429	ER32	9/16"	M14	25	0.429	0.322
ET32-437	ER32	1/8" NPT	-	18	0.437	0.328
ET32-480	ER32	5/8"	M16	25	0.480	0.360
ET32-542	ER32	11/16"	M18	30	0.542	0.406
ET32-562	ER32	1/4" NPT	-	18	0.562	0.421
ET32-590	ER32	3/4"	-	30	0.590	0.422
ET32-652	ER32	13/16"	M20	30	0.652	0.489
ET40-255	ER40	#14, 1/4"	M6, M6.5	25	0.255	0.191
ET40-318	ER40	5/16"	M7, M6.5	25	0.318	0.238
ET40-323	ER40	7/16"	-	25	0.323	0.242
ET40-367	ER40	1/2"	M12, M12.5	25	0.367	0.275
ET40-381	ER40	3/8"	M10	25	0.381	0.286
ET40-429	ER40	9/16"	M14	25	0.429	0.322
ET40-437	ER40	1/8" NPT	-	18	0.437	0.328
ET40-480	ER40	5/8"	M16	25	0.480	0.360
ET40-542	ER40	11/16"	M18	30	0.542	0.406
ET40-562	ER40	1/4" NPT	-	18	0.562	0.421
ET40-590	ER40	3/4"	-	30	0.590	0.422
ET40-652	ER40	13/16"	M20	30	0.652	0.489
ET40-687	ER40	1/2" NPT	-	18	0.687	0.515
ET40-697	ER40	7/8"	M22	30	0.697	0.523
ET40-700	ER40	3/8" NPT	-	18	0.700	0.531
ET40-760	ER40	15/16"	M24	35	0.760	0.570
ET40-800	ER40	1"	M25	35	0.800	0.600