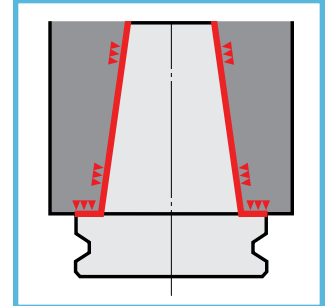
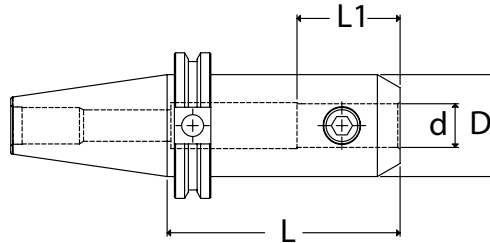
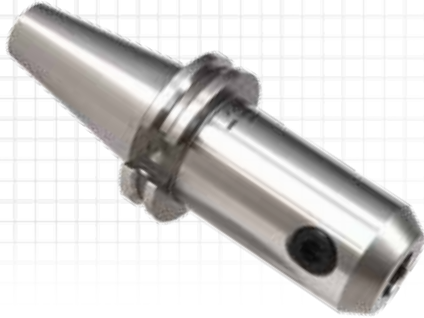


End Mill Holders



Part Number	d	L	L1	D	Set Screw Part Number
-------------	---	---	----	---	-----------------------

CAT 40

NC4006-0500-2.50	1/2"	2.50"	1.50"	1.38"	S7/16-20X3/8
NC4006-0625-3.00	5/8"	3.00"	1.61"	1.65"	S9/16-18X1/2
NC4006-0750-3.00	3/4"	3.00"	1.77"	1.75"	S5/8-18X1/2
NC4006-1000-4.00	1"	4.00"	2.36"	2.36"	S3/4-16X11/16 (2)
NC4006-1250-4.00	1-1/4"	4.00"	2.55"	2.48"	S3/4-16X11/16 (2)
NC4006-1500-4.50	1-1/2"	4.50"	2.55"	2.99"	S3/4-16X11/16 (2)
NC4016-0500-4.00	1/2"	4.00"	1.50"	1.38"	S7/16-20X3/8
NC4016-0750-4.00	3/4"	4.00"	1.77"	1.75"	S5/8-18X1/2
NC4026-0500-5.00	1/2"	5.00"	1.50"	1.38"	S7/16-20X3/8

CAT 50

NC5006-0500-2.63	1/2"	2.63"	1.50"	1.38"	S7/16-20X3/8
NC5006-0625-3.00	5/8"	3.00"	1.61"	1.65"	S9/16-18X1/2
NC5006-0750-3.00	3/4"	3.00"	1.77"	1.89"	S5/8-18X1/2
NC5006-1000-4.00	1"	4.00"	2.36"	2.36"	S3/4-16X11/16 (2)
NC5006-1250-3.00A*	1-1/4"	3.00"	2.27"	2.87"	S3/4-16X7/8
NC5006-1250-4.00	1-1/4"	4.00"	2.55"	2.48"	S3/4-16X11/16 (2)
NC5006-1500-4.50	1-1/2"	4.50"	2.83"	2.99"	S3/4-16X11/16 (2)
NC5006-2000-5.35A*	2"	5.35"	3.38"	4.00"	S3/4-16X7/8 (2)
NC5006-2000-5.37	2"	5.37"	3.34"	3.74"	S1"-14x7/8 (2)
NC5006-2500-5.35A*	2-1/2"	5.35"	3.38"	5.00"	S3/4-16X7/8(2)
NC5006-2500-6.00	2-1/2"	6.00"	3.66"	4.25"	S1"-14x7/8 (2)
NC5006-32-4.00	32mm	4.00"	2.55"	2.48"	S3/4-16X11/16 (2)
NC5006-40-4.50	40mm	4.50"	2.95"	3.07"	S3/4-16X11/16 (2)
NC5006-50-5.37	50mm	5.37"	3.35"	3.74"	S1"-14X7/8 (2)
NC5016-0500-4.00	1/2"	4.00"	1.50"	1.38"	S7/16-20X3/8
NC5016-0625-4.00	5/8"	4.00"	1.61"	1.65"	S9/16-18X1/2
NC5016-0750-4.00	3/4"	4.00"	1.77"	1.89"	S5/8-18X1/2
NC5016-1000-6.00	1"	6.00"	2.36"	2.36"	S3/4-16X11/16 (2)
NC5016-1250-6.00	1-1/4"	6.00"	2.55"	2.48"	S3/4-16X11/16 (2)
NC5026-0750-6.00	3/4"	6.00"	1.77"	1.89"	S5/8-18X1/2

* Non-stocking item. Please contact us for more information.