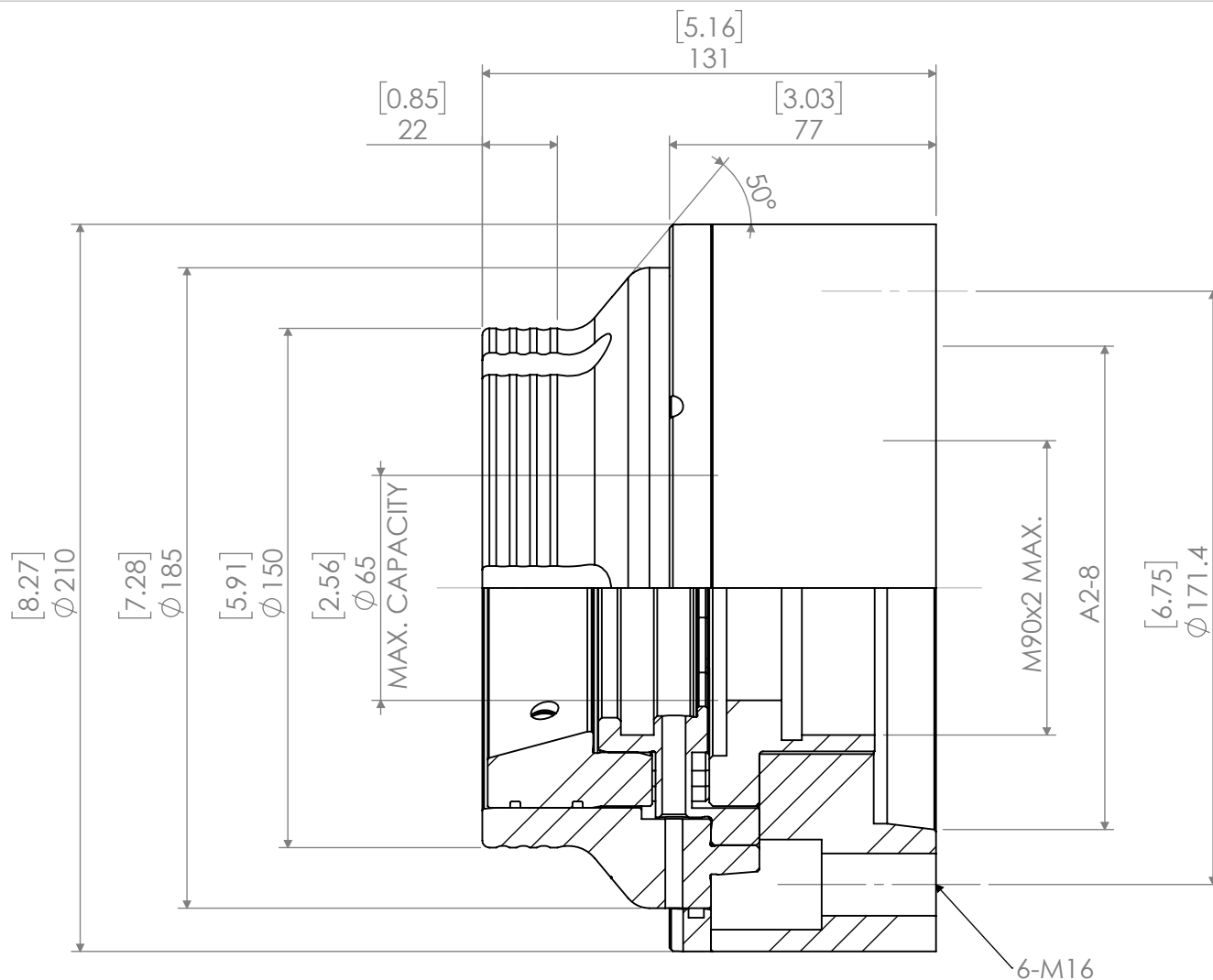


SCALE: 1/4



Notes:
INCLUDED: REMOVABLE BACKSTOP
OPTIONAL: QCFC65-WRENCH

MAX. RPM: 6,000
MAX. INPUT FORCE: 45kN

MATERIAL

FINISH

UNLESS OTHERWISE SPECIFIED:

DIMENSIONS ARE IN MM [INCH]
TOLERANCES:
FRACTIONAL ±
ANGULAR: MACH ± BEND ±
TWO PLACE DECIMAL ±
THREE PLACE DECIMAL ±

INTERPRET GEOMETRIC
TOLERANCING PER: ANSI Y 14.5M

THIRD ANGLE PROJECTION



NAME

DATE

DRAWN

AR

3/17/20

CHECKED

ENG APPR.

MFG APPR.

Q.A.

PROPRIETARY AND CONFIDENTIAL
THE INFORMATION CONTAINED IN THIS
DRAWING IS THE SOLE PROPERTY OF
LYNDEX NIKKEN. ANY REPRODUCTION
IN PART OR AS A WHOLE WITHOUT THE
WRITTEN PERMISSION OF LYNDEX NIKKEN
IS PROHIBITED.

QCFC65 SERIES DEAD LENGTH A2-8



SIZE
A

DWG. NO.

QCC-DL65-A8

REV

SCALE: 1/2

SHEET 1 OF 1