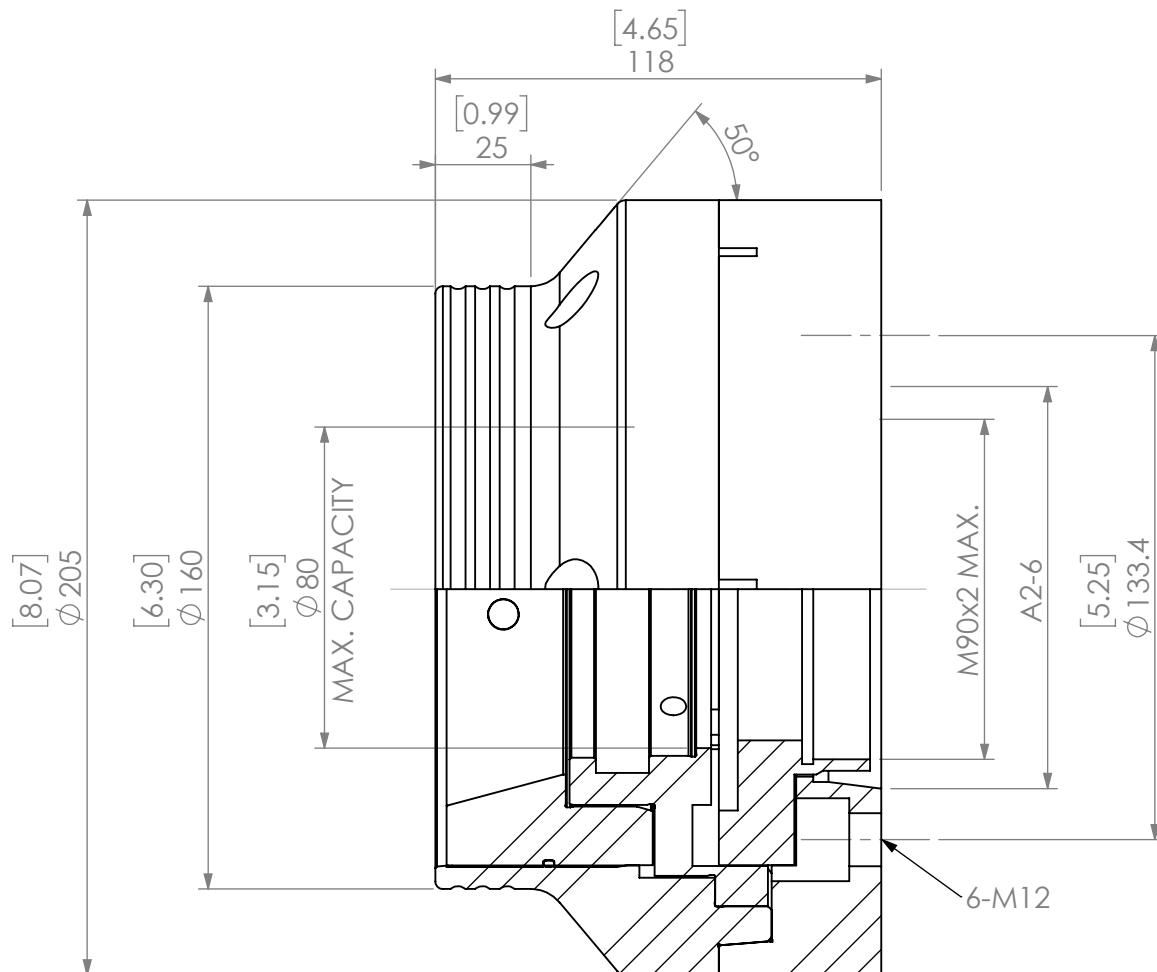




SCALE: 1/4



Notes: INCLUDED: REMOVABLE BACKSTOP OPTIONAL: QCFC80-WRENCH MAX RPM: 5,500 MAX INPUT FORCE: 50kN		UNLESS OTHERWISE SPECIFIED:				NAME		DATE		QCFC80 SERIES DEAD LENGTH A2-6	
		DIMENSIONS ARE IN MM [INCH] TOLERANCES: FRACTIONAL ± ANGULAR: MACH ± BEND ± TWO PLACE DECIMAL ± THREE PLACE DECIMAL ±		DRAWN		AR		3/18/20			
				CHECKED						<div>LYNDEX NIKKEN</div> 	
				ENG APPR.							
				MFG APPR.							
		INTERPRET GEOMETRIC TOLERANCING PER: ANSI Y 14.5M		Q.A.							
MATERIAL		<div>THIRD ANGLE PROJECTION</div> 		<div>PROPRIETARY AND CONFIDENTIAL</div> <div>THE INFORMATION CONTAINED IN THIS DRAWING IS THE SOLE PROPERTY OF LYNDEX NIKKEN. ANY REPRODUCTION IN PART OR AS A WHOLE WITHOUT THE WRITTEN PERMISSION OF LYNDEX NIKKEN IS PROHIBITED.</div>							
FINISH											
				SIZE		DWG. NO.		REV			
				A		QCC-DL80-A6					
				SCALE: 1/2				SHEET 1 OF 1			