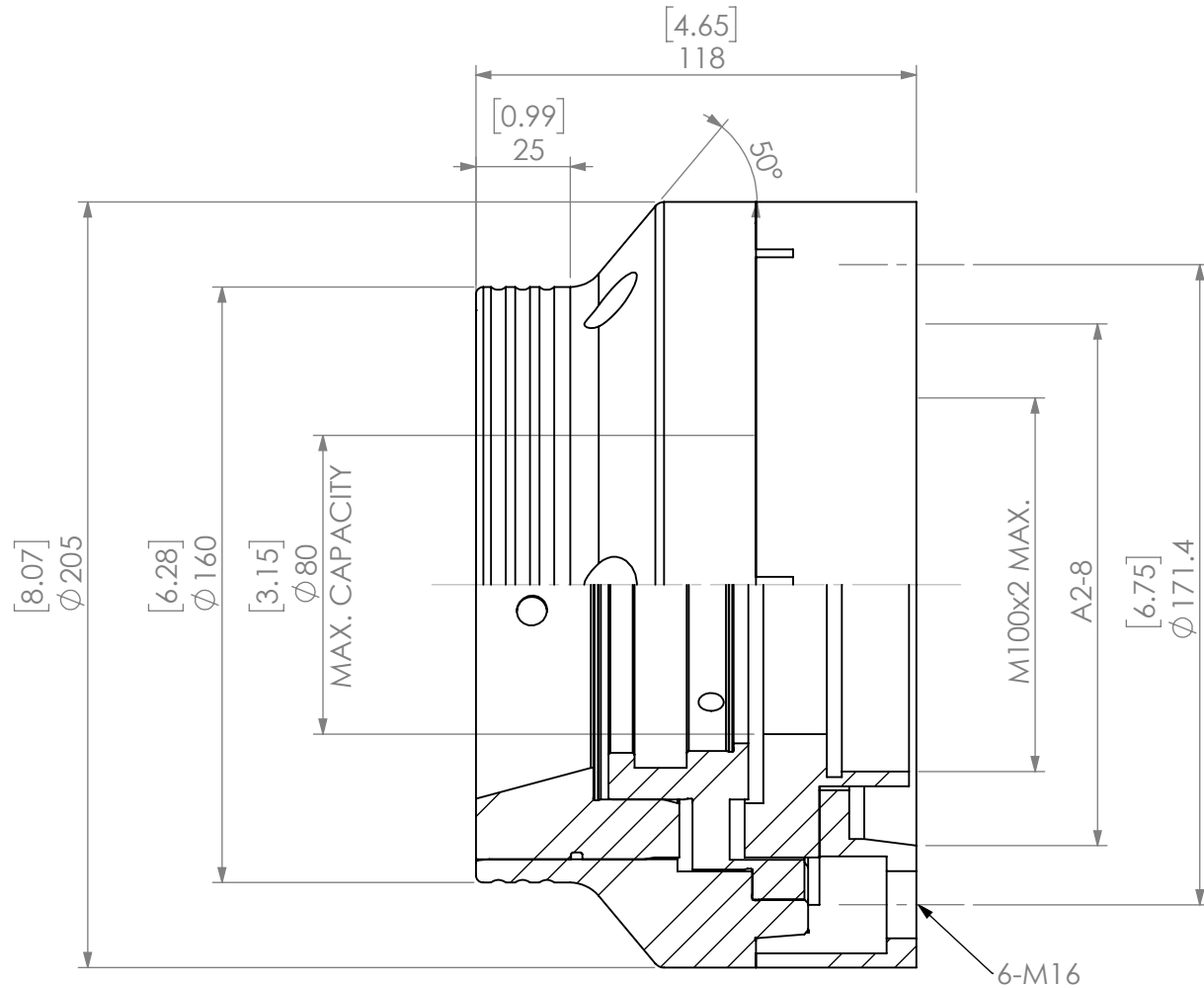




SCALE: 1/4



Notes: INCLUDED: REMOVABLE BACKSTOP OPRIONAL QCFC80-WRENCH		UNLESS OTHERWISE SPECIFIED:		NAME	DATE	QCFC80 SERIES DEAD LENGTH A2-8		
MAX RPM: 5,500 MAX INPUT FORCE: 50kN		DIMENSIONS ARE IN MM [INCH] TOLERANCES: FRACTIONAL ± ANGULAR: MACH ± BEND ± TWO PLACE DECIMAL ± THREE PLACE DECIMAL ±		DRAWN	AR	3/18/20	<div>LYNDEX NIKKEN</div> 	
				CHECKED				
				ENG APPR.				
				MFG APPR.				
				Q.A.				
		INTERPRET GEOMETRIC TOLERANCING PER: ANSI Y 14.5M		PROPRIETARY AND CONFIDENTIAL THE INFORMATION CONTAINED IN THIS DRAWING IS THE SOLE PROPERTY OF LYNDEX NIKKEN. ANY REPRODUCTION IN PART OR AS A WHOLE WITHOUT THE WRITTEN PERMISSION OF LYNDEX NIKKEN IS PROHIBITED.				
MATERIAL		THIRD ANGLE PROJECTION		SIZE			DWG. NO.	REV
FINISH				A			QCC-DL80-A8	
				SCALE: 1/2				SHEET 1 OF 1