



# SPECIFICATION SHEET

## 385-1370FR



### ANSI TYPE R CLASS 3 AR/FR BLACK BOTTOM ZIP FRONT HOODED SWEATSHIRT

- 11.2 oz AR/FR fleece knit
- ARC rating: ATPV 19.2 cal/cm<sup>2</sup>
- 2" 3M Scotchlite Reflective Material Segmented FR Trim
- Black bottom and cuffs to help hide dirt
- Front hand warmer pockets and left zippered chest pocket
- Aramid high tenacity FR thread
- Adjustable drawstring hood
- #5 resin zipper on aramid tape
- Storm guard over front zipper with hook and loop closure
- FR rib knit cuff and waistband
- NFPA 70E, ASTM F1506, ANSI 107-2015

### APPLICATIONS

- Daily wear use and under arc flash suits and coveralls
- Electrical contractors and utilities
- Petrochemical
- Mining
- Hospital and plant technical maintenance
- HVAC
- Wind energy
- Hybrid auto mechanics
- Environmental remediation
- Welding
- Telecommunications/cable
- Emergency services

### CARE INSTRUCTIONS

- Machine wash warm, tumble dry low
- Wash with synthetic detergents
- Wash separate from everyday clothing in small loads
- FR clothing is dry cleanable
- DO NOT Bleach
- DO NOT use fabric softener
- DO NOT use dryer sheets

### TECHNICAL DATA

MATERIAL	Modacrylic & Cotton
CONSTRUCTION	<b>Hi-Vis Yellow:</b> 11.2oz Yellow 60% Modacrylic / 40% Cotton <b>Black bottom:</b> 12oz Black 100% Cotton FR Fleece <b>Reflective material:</b> 3M Scotchlite Reflective Material Segmented FR Trim
COLOR	■ Hi-Vis Yellow with Black
SIZES	S - 5X
PACKAGING	1 per polybag; 10 per case
CASE DIMENSIONS	25" x 19" x 11.6" / 64cm x 48cm x 27cm
CASE WEIGHT	25 lbs / 11.3 kg
COO	China

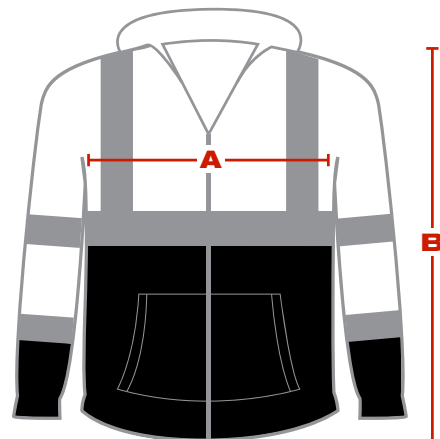
### BARCODES

ITEM	BAG	BOX	CASE
■ 385-1370FR-LY/S	616314213052	---	02616314213050
■ 385-1370FR-LY/M	616314213069	---	02616314213067
■ 385-1370FR-LY/L	616314213076	---	02616314213074
■ 385-1370FR-LY/XL	616314213083	---	02616314213081
■ 385-1370FR-LY/2X	616314213090	---	02616314213098
■ 385-1370FR-LY/3X	616314213106	---	02616314213104
■ 385-1370FR-LY/4X	616314213113	---	02616314213111
■ 385-1370FR-LY/5X	616314213120	---	02616314213128



### DIMENSIONS (in/cm)

	S	M	L	XL	2X	3X	4X	5X
<b>A</b>	42 / 107	46 / 117	50 / 127	54 / 137	58 / 147	62 / 157	66 / 168	70 / 178
<b>B</b>	28 / 71	29 / 74	29.5 / 75	30 / 76	31 / 39	32 / 81	33 / 84	34 / 86



**PROTECTIVE INDUSTRIAL PRODUCTS, INC. | BRINGING THE BEST OF THE WORLD TO YOU®**

AMERICAS: (800) 262-5755 • (518) 861-0133 | EUROPE: +34-96182-41-48 | AMEA: (ASIA, MIDDLE EAST, AFRICA) 852-2475-9228 | [www.pipglobal.com](http://www.pipglobal.com)

This document and the information contained herein is the property of Protective Industrial Products, Inc. (PIP) and may not be used or reproduced without permission. Product users should conduct all appropriate testing or other evaluations to determine the suitability of PIP products for a particular purpose or use within a particular environment. PIP DISCLAIMS ALL WARRANTIES OTHER THAN AS EXPRESSLY PROVIDED.