

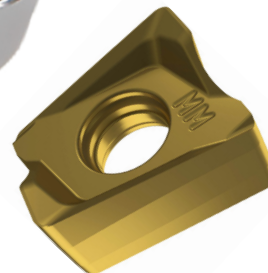
Experience the cost effective reliability and high quality finish of the ECON LN

Pramet ECON LN square shoulder milling cutter from Dormer Pramet is designed with a positive axial geometry which allows for lower cutting forces and smoother machining.

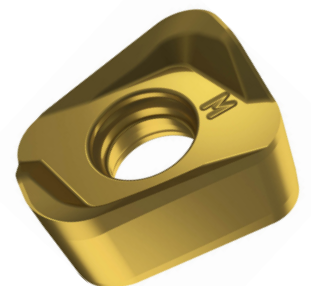


Inserts Assortment:

- Positive Insert Geometry
- Inclined Cutting Edges
- PVD and CVD Grades Available



LNGX 12

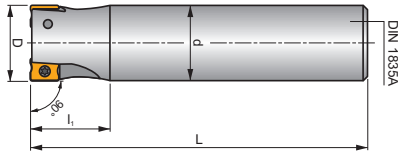


LNGU 12



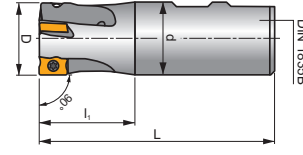
LNGX 12-FA

Universal 90° cutter designed for multi-purpose operations including face milling, shoulder milling, and slotting.



Cylindrical

| ISO Code | EDP# | D | L | l1 | d | # of Inserts |
|------------------------|---------|-------|-------|-------|-------|--------------|
| 100A2R134C100-ISLN12-C | 6792996 | 1.000 | 6.693 | 1.340 | 1.000 | 2 |
| 100A2R315C100-ISLN12-C | 6792998 | 1.000 | 6.693 | 3.150 | 1.000 | 2 |
| 125A2R134C125-ISLN12-C | 6792999 | 1.250 | 7.677 | 1.340 | 1.250 | 2 |
| 125A2R354C125-ISLN12-C | 6793011 | 1.250 | 7.677 | 3.543 | 1.250 | 2 |

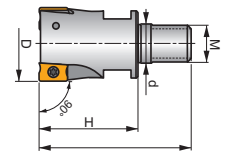


Weldon

| ISO Code | EDP# | D | L | l1 | d | # of Inserts |
|------------------------|---------|-------|-------|-------|-------|--------------|
| 100A2R128W100-ISLN12-C | 6792995 | 1.000 | 3.819 | 1.280 | 1.000 | 2 |
| 125A3R150W125-ISLN12-C | 6793012 | 1.250 | 4.039 | 1.500 | 1.250 | 3 |
| 150A4R160W125-ISLN12-C | 6793016 | 1.500 | 4.389 | 1.600 | 1.250 | 4 |

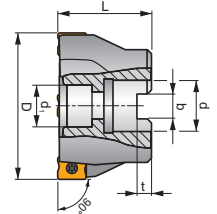
Modular

| ISO Code | EDP# | D | L | H | d | # of Inserts |
|-----------------------|---------|-------|-------|-------|------|--------------|
| 100A2R138M12-ISLN12-C | 6792997 | 1.000 | 2.244 | 1.378 | .492 | 2 |
| 125A2R169M16-ISLN12-C | 6793010 | 1.250 | 2.598 | 1.693 | .669 | 2 |
| 125A3R169M16-ISLN12-C | 6793013 | 1.250 | 2.598 | 1.693 | .669 | 3 |
| 150A3R169M16-ISLN12-C | 6793015 | 1.500 | 2.598 | 1.693 | .669 | 3 |



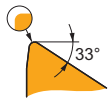
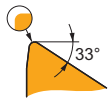
Arbor Mount

| ISO Code | EDP# | D | d | d1 | L | b | t | # of Inserts |
|--------------------|---------|-------|-------|-------|-------|------|------|--------------|
| 150A04R-IS90LN12-C | 6793014 | 1.500 | .500 | .433 | 1.575 | .258 | .165 | 4 |
| 200A04R-IS90LN12-C | 6793017 | 2.000 | .750 | .630 | 1.575 | .321 | .193 | 4 |
| 200A05R-IS90LN12-C | 6793018 | 2.000 | .750 | .630 | 1.575 | .321 | .193 | 5 |
| 250A04R-IS90LN12-C | 6793019 | 2.500 | .750 | .630 | 1.575 | .321 | .193 | 4 |
| 250A06R-IS90LN12-C | 6793020 | 2.500 | .750 | .630 | 1.575 | .321 | .193 | 6 |
| 300A05R-IS90LN12-C | 6793021 | 3.000 | 1.000 | .827 | 1.969 | .382 | .224 | 5 |
| 300A07R-IS90LN12-C | 6793022 | 3.000 | 1.000 | .827 | 1.969 | .382 | .224 | 7 |
| 400A06R-IS90LN12-C | 6793023 | 4.000 | 1.500 | 1.260 | 1.969 | .630 | .382 | 6 |
| 400A08R-IS90LN12-C | 6793024 | 4.000 | 1.500 | 1.260 | 1.969 | .630 | .382 | 8 |
| 500A07R-IS90LN12-C | 6793025 | 5.000 | 1.500 | 1.260 | 2.480 | .630 | .382 | 7 |
| 500A09R-IS90LN12-C | 6793026 | 5.000 | 1.500 | 1.260 | 2.480 | .630 | .382 | 9 |

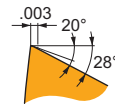
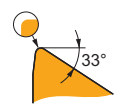
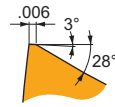


LNGX 12

| ANSI | P | M | K | S | r _c |
|-----------------|---|---|---|---|----------------|
| M8330 | ■ | ■ | ■ | | .016 |
| LNGX 120504ER-F | ■ | ■ | ■ | | .016 |
| 8215 | ■ | ■ | ■ | | .016 |
| M8310 | ■ | ■ | ■ | | .031 |
| LNGX 120508ER-F | ■ | ■ | ■ | | .031 |
| M8340 | ■ | ■ | ■ | | .031 |
| 8215 | ■ | ■ | ■ | | .031 |
| LNGX 120504ER-M | ■ | | ■ | | .016 |
| M8330 | ■ | | ■ | | .016 |
| M9315 | ■ | | ■ | | .031 |
| M9325 | ■ | | ■ | | .031 |
| M9340 | ■ | | ■ | | .031 |
| LNGX 120508ER-M | ■ | | ■ | | .031 |
| M8310 | ■ | | ■ | | .031 |
| M8330 | ■ | | ■ | | .031 |
| M8340 | ■ | | ■ | | .031 |
| 8215 | ■ | | ■ | | .031 |
| LNGX 120510ER-M | ■ | | ■ | | .039 |
| M8330 | ■ | | ■ | | .039 |
| M8330 | ■ | | ■ | | .047 |
| M8340 | ■ | | ■ | | .047 |
| LNGX 120512ER-M | ■ | | ■ | | .063 |
| M8330 | ■ | | ■ | | .063 |
| M8340 | ■ | | ■ | | .063 |
| LNGX 120516ER-M | ■ | | ■ | | .079 |
| M8310 | ■ | | ■ | | .079 |
| LNGX 120520ER-M | ■ | | ■ | | .079 |
| M8330 | ■ | | ■ | | .079 |
| M8340 | ■ | | ■ | | .079 |



| ANSI | P | M | K | S | r _c |
|------------------|---|---|---|---|----------------|
| M5315 | ■ | | ■ | | .031 |
| M9315 | ■ | | ■ | | .031 |
| M9325 | ■ | | ■ | | .031 |
| M9340 | ■ | | ■ | | .031 |
| LNGX 120508SR-R | ■ | | ■ | | .031 |
| M8310 | ■ | | ■ | | .031 |
| M8330 | ■ | | ■ | | .031 |
| M8340 | ■ | | ■ | | .031 |
| 8215 | ■ | | ■ | | .031 |
| LNGX 120516SR-R | ■ | | ■ | | .063 |
| M9325 | ■ | | ■ | | .063 |
| M8330 | ■ | | ■ | | .063 |
| M8340 | ■ | | ■ | | .063 |
| 8215 | ■ | | ■ | | .063 |
| LNGX 120504ER-MF | ■ | ■ | ■ | ■ | .016 |
| M6330 | ■ | ■ | ■ | ■ | .016 |
| M8340 | ■ | ■ | ■ | ■ | .016 |
| M9340 | ■ | ■ | ■ | ■ | .031 |
| LNGX 120508ER-MF | ■ | ■ | ■ | ■ | .031 |
| M6330 | ■ | ■ | ■ | ■ | .031 |
| M8340 | ■ | ■ | ■ | ■ | .031 |
| M9340 | ■ | ■ | ■ | ■ | .031 |
| LNGX 120508SR-MM | ■ | ■ | ■ | ■ | .031 |
| M6330 | ■ | ■ | ■ | ■ | .031 |
| M8340 | ■ | ■ | ■ | ■ | .031 |
| M8345 | ■ | ■ | ■ | ■ | .031 |



■ Main Application
 ■ Secondary Application

LNGU 12 and LNGX 12-FA also available