

REGO-FIX®

Tooling for Swiss Automatics



MANUFACTURED IN SWITZERLAND



Swiss
Precision
Tools



ISO 9001
CERTIFIED



SWISS MANUFACTURING FACILITIES

Tenniken, Switzerland

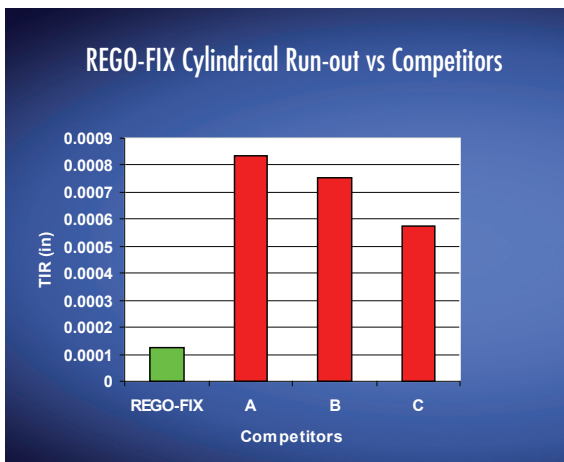
REGO-FIX® has been manufacturing quality toolholding products in Switzerland since the company was founded in 1950, and continues to be recognized worldwide as a leader and innovator of high quality toolholding products. Through our new state-of-the-art ISO certified manufacturing facility in Tenniken, Switzerland and our ongoing commitment to R&D, **REGO-FIX®** remains the leader in the development of high precision products. As the inventor of the ER collet, **REGO-FIX®** continues to set the standard in toolholding products.



NORTH AMERICAN SALES OFFICE

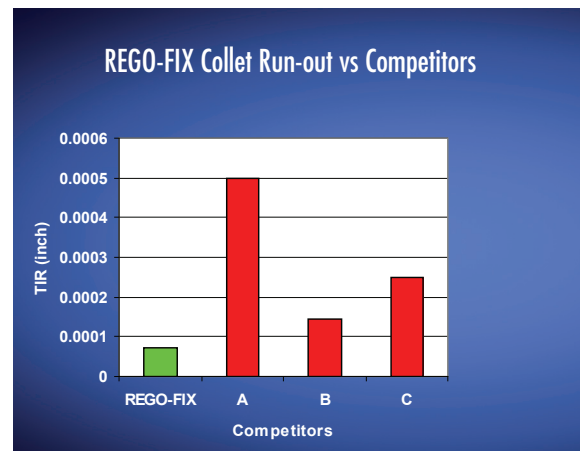
Indianapolis, Indiana

REGO-FIX® Tool Corporation was established to bring our quality Swiss products to the U.S., Canadian and Mexican market, and has been doing so for the past three decades. Our US based office consists of product inventory, customer service and technical sales support. Weekly airfreight shipments from Switzerland restock our large product warehouse, which allows us to fulfill 98% of all requests in the same day. Customer service personnel and technical product specialists are here to provide our distribution network with the quick response and expert support that is equal to our quality products.



CYLINDRICAL HOLDERS

REGO-FIX® offers the most accurate cylindrical extensions in the industry. Available in metric and inch diameters as well as in round shank and with flats.



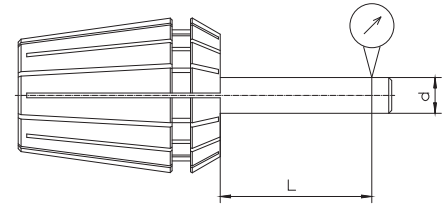
ER COLLETS

Only "The Original" ER collet manufactured by **REGO-FIX®** can offer the consistent low TIR (Total Indicated Run-out) required in the demanding applications of Swiss Type Automatic machinery.

Catalog Index

ER Microbore Collets	4
ER 8 & ER 11 Collets	5
ER 16 Collets	6
ER 20 Collets	7
ER 25 Collets	8
DM / ER Metallic Sealed Collets	9
Rigid Tapping Collets	11
Compensating Tapping Collets Inch Sizes	13
Compensating Tapping Collets Metric Sizes	14
Coolant Disk System	17
Cylindrical Holders with Mini-nuts	19
Cylindrical Holders with Mini-nuts and Flats	20
Cylindrical Double Ended Holders	21
Mini-Floating Holders	21
SwissQuick Change System	22
Spanner and Torque Wrenches	23

Concentricity of Collets



ER (Standard) and ER-UP (Ultra Precision)

Clamping Range [mm]			Concentricity [mm]*		
from d	to d	L	ER DIN	REGO-FIX ER	REGO-FIX ER-UP
1.0	1.6	6.0			
1.6	3.0	10.0	0.015 (0.0006")	0.010 (0.0004")	0.005 (0.0002")
3.0	6.0	16.0			
6.0	10.0	25.0			
10.0	18.0	40.0	0.020 (0.0008")	0.010 (0.0004")	0.005 (0.0002")
18.0	26.0	50.0			
26.0	34.0	60.0	0.025 (0.001")	0.015 (0.0006")	0.010 (0.0004")

*Concentricity is guaranteed over the FULL clamping range.

CONCENTRICITY



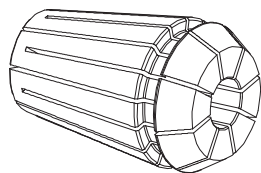
ER 8 – ER 16 Microbore Collets

Clamping Diameter h7		ER 8-MB	ER 11-MB	ER 16-MB
[mm]	[inch]	Part No.	Part No.	Part No.
0.2	0.0079	1308.00200	1311.00200	1316.00200
0.3	0.0118	1308.00300	1311.00300	1316.00300
0.4	0.0157	1308.00400	1311.00400	1316.00400
0.5	0.0197	1308.00500	1311.00500	1316.00500
0.6	0.0236	1308.00600	1311.00600	1316.00600
0.7	0.0276	1308.00700	1311.00700	1316.00700
0.8	0.0315	1308.00800	1311.00800	1316.00800
0.9	0.0354	1308.00900	1311.00900	1316.00900

Additional technical information on page 14.06

NOTE: Microbore collets have zero clamping range. They are to be used only for their designated diameter in h6 shank quality or better.

NOTE: Special inch and metric diameters can be manufactured at an additional cost. Please call for pricing.



ER 8 & ER 11

Standard and Ultra-Precision (UP) Collets

Metric Collets

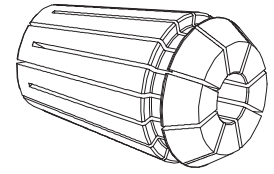
Clamping Capacity		Ø [inch]	ER 8	ER 8-UP	ER 11	ER 11-UP
[mm]	[inch]		Part No.	Part No.	Part No.	Part No.
1.00 ... 0.50 *	0.0394 ... 0.0197	1/32	1108.01000	1108.01001	1111.01000	1111.01001
1.50 ... 1.00 *	0.0591 ... 0.0394		1108.01500	1108.01501	1111.01500	1111.01501
2.00 ... 1.50 *	0.0787 ... 0.0591		1108.02000	1108.02001	1111.02000	1111.02001
2.50 ... 2.00 *	0.0984 ... 0.0787		1108.02500	1108.02501	1111.02500	1111.02501
3.00 ... 2.50 *	0.1181 ... 0.0984		1108.03000	1108.03001	1111.03000	1111.03001
3.50 ... 3.00 *	0.1378 ... 0.1181		1108.03500	1108.03501	1111.03500	1111.03501
4.00 ... 3.50 *	0.1575 ... 0.1378		1108.04000	1108.04001	1111.04000	1111.04001
4.50 ... 4.00 *	0.1772 ... 0.1575		1108.04500	1108.04501	1111.04500	1111.04501
5.00 ... 4.50 *	0.1969 ... 0.1772		1108.05000	1108.05001	1111.05000	1111.05001
5.50 ... 5.00 *	0.2165 ... 0.1969				1111.05500	1111.05501
6.00 ... 5.50 *	0.2362 ... 0.2165				1111.06000	1111.06001
6.50 ... 6.00 *	0.2559 ... 0.2362				1111.06500	1111.06501
7.00 ... 6.50 *	0.2756 ... 0.2559				1111.07000	1111.07001
Collet Sets come in Standard and UP *Sizes are included in Sets			1108.00000	1108.00001	1111.00000	1111.00001
			9 Collets and 1 Wooden Tray		13 Collets and 1 Wooden Tray	

True Inch Collets

Ø [inch]	Clamping Capacity		ER 8	ER 8-UP	ER 11	ER 11-UP
	[inch]	[mm]	Part No.	Part No.	Part No.	Part No.
1/16	0.0625 ... 0.0425	1.59 ... 1.09	1108.01592	1108.01593	1111.01592	1111.01593
3/32	0.0938 ... 0.0738	2.38 ... 1.88			1111.02382	1111.02383
1/8 *	0.1250 ... 0.0850	3.18 ... 2.18	1108.03182	1108.03183	1111.03182	1111.03183
5/32	0.1563 ... 0.1163	3.97 ... 2.97			1111.03972	1111.03973
3/16 *	0.1875 ... 0.1475	4.76 ... 3.76	1108.04762	1108.04763	1111.04762	1111.04763
7/32	0.2188 ... 0.1788	5.56 ... 4.56			1111.05562	1111.05563
1/4 *	0.2500 ... 0.2100	6.35 ... 5.35			1111.06352	1111.06353
All Inch Collets included in Standard Set *Sizes are included in UP Set			1108.00002	1108.00003	1111.00002	1111.00003
			3 Collets and 1 Wooden Tray		7 Collets and 1 Wooden Tray	

ER 16

Standard and Ultra-Precision (UP) Collets



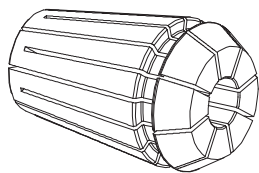
ER COLLETS

Metric Collets

Clamping Capacity		Ø [inch]	ER 16 Part No.	ER 16-UP Part No.
[mm]	[inch]			
1.00 ... 0.50 *	0.0394 ... 0.0197	1/32	1116.01000	1116.01001
1.50 ... 1.00	0.0591 ... 0.0394		1116.01500	1116.01501
2.00 ... 1.00 *	0.0787 ... 0.0394		1116.02000	1116.02001
2.50 ... 1.50	0.0984 ... 0.0591		1116.02500	1116.02501
3.00 ... 2.00 *	0.1181 ... 0.0787		1116.03000	1116.03001
3.50 ... 2.50	0.1378 ... 0.0984		1116.03500	1116.03501
4.00 ... 3.00 *	0.1575 ... 0.1181		1116.04000	1116.04001
4.50 ... 3.50	0.1772 ... 0.1378		1116.04500	1116.04501
5.00 ... 4.00 *	0.1969 ... 0.1575		1116.05000	1116.05001
5.50 ... 4.50	0.2165 ... 0.1772		1116.05500	1116.05501
6.00 ... 5.00 *	0.2362 ... 0.1969		1116.06000	1116.06001
6.50 ... 5.50	0.2559 ... 0.2165		1116.06500	1116.06501
7.00 ... 6.00 *	0.2756 ... 0.2362		1116.07000	1116.07001
7.50 ... 6.50	0.2953 ... 0.2559		1116.07500	1116.07501
8.00 ... 7.00 *	0.3150 ... 0.2756		1116.08000	1116.08001
8.50 ... 7.50	0.3347 ... 0.2953		1116.08500	1116.08501
9.00 ... 8.00 *	0.3543 ... 0.3150		1116.09000	1116.09001
9.50 ... 8.50	0.3740 ... 0.3347		1116.09500	1116.09501
10.00 ... 9.00 *	0.3937 ... 0.3543		1116.10000	1116.10001
Collet Sets come in Standard and UP *Sizes are included in Sets			1116.00000	1116.00001
			10 Collets and 1 Tray	

True Inch Collets

Ø [inch]	Clamping Capacity		ER 16 Part No.	ER 16-UP Part No.
	[inch]	[mm]		
1/16 *	0.0625 ... 0.0425	1.59 ... 1.09	1116.01592	1116.01593
3/32 *	0.0938 ... 0.0738	2.38 ... 1.88	1116.02382	1116.02383
1/8 *	0.1250 ... 0.0850	3.18 ... 2.18	1116.03182	1116.03183
5/32 *	0.1563 ... 0.1163	3.97 ... 2.97	1116.03972	1116.03973
3/16 *	0.1875 ... 0.1475	4.76 ... 3.76	1116.04762	1116.04763
7/32 *	0.2188 ... 0.1788	5.56 ... 4.56	1116.05562	1116.05563
1/4 *	0.2500 ... 0.2100	6.35 ... 5.35	1116.06352	1116.06353
9/32 *	0.2813 ... 0.2413	7.14 ... 6.14	1116.07142	1116.07143
5/16 *	0.3125 ... 0.2725	7.94 ... 6.94	1116.07942	1116.07943
11/32 *	0.3438 ... 0.3038	8.73 ... 7.73	1116.08732	1116.08733
3/8 *	0.3750 ... 0.3350	9.53 ... 8.53	1116.09532	1116.09533
13/32 *	0.4063 ... 0.3663	10.32 ... 9.32	1116.10322	1116.10323
Collet Sets come in Standard and UP *Sizes are included in Sets			1116.00002	1116.00003
			12 Collets and 1 Tray	



ER 20

Standard and Ultra-Precision (UP) Collets

Metric Collets

Clamping Capacity		Ø [inch]	ER 20 Part No.	ER 20-UP Part No.
[mm]	[inch]			
1.00 ... 0.50	0.0394 ... 0.0197	1/32	1120.01000	1120.01001
1.50 ... 1.00	0.0591 ... 0.0394		1120.01500	1120.01501
2.00 ... 1.00 *	0.0787 ... 0.0394	1/16	1120.02000	1120.02001
2.50 ... 1.50	0.0984 ... 0.0591	3/32	1120.02500	1120.02501
3.00 ... 2.00 *	0.1181 ... 0.0787		1120.03000	1120.03001
3.50 ... 2.50	0.1378 ... 0.0984		1120.03500	1120.03501
4.00 ... 3.00 *	0.1575 ... 0.1181	5/32	1120.04000	1120.04001
4.50 ... 3.50	0.1772 ... 0.1378		1120.04500	1120.04501
5.00 ... 4.00 *	0.1969 ... 0.1575		1120.05000	1120.05001
5.50 ... 4.50	0.2165 ... 0.1772		1120.05500	1120.05501
6.00 ... 5.00 *	0.2362 ... 0.1969	7/32	1120.06000	1120.06001
6.50 ... 5.50	0.2559 ... 0.2165		1120.06500	1120.06501
7.00 ... 6.00 *	0.2756 ... 0.2362		1120.07000	1120.07001
7.50 ... 6.50	0.2953 ... 0.2559	9/32	1120.07500	1120.07501
8.00 ... 7.00 *	0.3150 ... 0.2756		1120.08000	1120.08001
8.50 ... 7.50	0.3347 ... 0.2953		1120.08500	1120.08501
9.00 ... 8.00 *	0.3543 ... 0.3150	11/32	1120.09000	1120.09001
9.50 ... 8.50	0.3740 ... 0.3347		1120.09500	1120.09501
10.00 ... 9.00 *	0.3937 ... 0.3543		1120.10000	1120.10001
10.50 ... 9.50	0.4134 ... 0.3740	13/32	1120.10500	1120.10501
11.00 ... 10.00 *	0.4330 ... 0.3937		1120.11000	1120.11001
11.50 ... 10.50	0.4528 ... 0.4134		1120.11500	1120.11501
12.00 ... 11.00 *	0.4724 ... 0.4330	15/32	1120.12000	1120.12001
12.50 ... 11.50	0.4921 ... 0.4528		1120.12500	1120.12501
13.00 ... 12.00 *	0.5118 ... 0.4724		1120.13000	1120.13001
Collet Sets come in Standard and UP *Sizes are included in Sets			1120.00000	1120.00001
			12 Collets and 1 Tray	

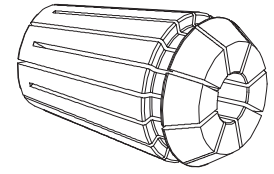
True Inch Collets

Ø [inch]	Clamping Capacity		ER 20 Part No.	ER 20-UP Part No.
	[inch]	[mm]		
1/8 *	0.1250 ... 0.0850	3.18 ... 2.18	1120.03182	1120.03183
3/16 *	0.1875 ... 0.1475	4.76 ... 3.76	1120.04762	1120.04763
1/4 *	0.2500 ... 0.2100	6.35 ... 5.35	1120.06352	1120.06353
5/16 *	0.3125 ... 0.2725	7.94 ... 6.94	1120.07942	1120.07943
3/8 *	0.3750 ... 0.3350	9.53 ... 8.53	1120.09532	1120.09533
7/16 *	0.4375 ... 0.3975	11.11 ... 10.11	1120.11112	1120.11113
1/2 *	0.5000 ... 0.4600	12.70 ... 11.70	1120.12702	1120.12703
Collet Sets come in Standard and UP *Sizes are included in Sets			1120.00002	1120.00003
			7 Collets and 1 Tray	

ER COLLETS

ER 25

Standard and Ultra-Precision (UP) Collets



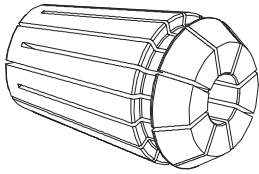
Metric Collets

True Inch Collets

ER COLLETS

Clamping Capacity		Ø [inch]	ER 25 Part No.	ER 25-UP Part No.
[mm]	[inch]			
1.00 ... 0.50	0.0394 ... 0.0197	1/32	1125.01000	1125.01001
1.50 ... 1.00	0.0591 ... 0.0394		1125.01500	1125.01501
2.00 ... 1.00 *	0.0787 ... 0.0394	1/16	1125.02000	1125.02001
2.50 ... 1.50	0.0984 ... 0.0591	3/32	1125.02500	1125.02501
3.00 ... 2.00 *	0.1181 ... 0.0787		1125.03000	1125.03001
3.50 ... 2.50	0.1378 ... 0.0984		1125.03500	1125.03501
4.00 ... 3.00 *	0.1575 ... 0.1181	5/32	1125.04000	1125.04001
4.50 ... 3.50	0.1772 ... 0.1378		1125.04500	1125.04501
5.00 ... 4.00 *	0.1969 ... 0.1575		1125.05000	1125.05001
5.50 ... 4.50	0.2165 ... 0.1772		1125.05500	1125.05501
6.00 ... 5.00 *	0.2362 ... 0.1969	7/32	1125.06000	1125.06001
6.50 ... 5.50	0.2559 ... 0.2165		1125.06500	1125.06501
7.00 ... 6.00 *	0.2756 ... 0.2362		1125.07000	1125.07001
7.50 ... 6.50	0.2953 ... 0.2559	9/32	1125.07500	1125.07501
8.00 ... 7.00 *	0.3150 ... 0.2756		1125.08000	1125.08001
8.50 ... 7.50	0.3347 ... 0.2953		1125.08500	1125.08501
9.00 ... 8.00 *	0.3543 ... 0.3150	11/32	1125.09000	1125.09001
9.50 ... 8.50	0.3740 ... 0.3347		1125.09500	1125.09501
10.00 ... 9.00 *	0.3937 ... 0.3543		1125.10000	1125.10001
10.50 ... 9.50	0.4134 ... 0.3740	13/32	1125.10500	1125.10501
11.00 ... 10.00 *	0.4330 ... 0.3937		1125.11000	1125.11001
11.50 ... 10.50	0.4528 ... 0.4134		1125.11500	1125.11501
12.00 ... 11.00 *	0.4724 ... 0.4330	15/32	1125.12000	1125.12001
12.50 ... 11.50	0.4921 ... 0.4528		1125.12500	1125.12501
13.00 ... 12.00 *	0.5118 ... 0.4724		1125.13000	1125.13001
13.50 ... 12.50	0.5315 ... 0.4921	17/32	1125.13500	1125.13501
14.00 ... 13.00 *	0.5512 ... 0.5118		1125.14000	1125.14001
14.50 ... 13.50	0.5709 ... 0.5315		1125.14500	1125.14501
15.00 ... 14.00 *	0.5905 ... 0.5512		1125.15000	1125.15001
15.50 ... 14.50	0.6102 ... 0.5709	19/32	1125.15500	1125.15501
16.00 ... 15.00 *	0.6300 ... 0.5905		1125.16000	1125.16001
Collet Sets come in Standard and UP *Sizes are included in Sets			1125.00000	1125.00001
15 Collets and 1 Tray				

Ø [inch]	Clamping Capacity		ER 25 Part No.	ER 25-UP Part No.
	[inch]	[mm]		
1/8 *	0.1250 ... 0.0850	3.18 ... 2.18	1125.03182	1125.03183
3/16 *	0.1875 ... 0.1475	4.76 ... 3.76	1125.04762	1125.04763
1/4 *	0.2500 ... 0.2100	6.35 ... 5.35	1125.06352	1125.06353
5/16 *	0.3125 ... 0.2725	7.94 ... 6.94	1125.07942	1125.07943
3/8 *	0.3750 ... 0.3350	9.53 ... 8.53	1125.09532	1125.09533
7/16 *	0.4375 ... 0.3975	11.11 ... 10.11	1125.11112	1125.11113
1/2 *	0.5000 ... 0.4600	12.70 ... 11.70	1125.12702	1125.12703
9/16 *	0.5625 ... 0.5225	14.29 ... 13.29	1125.14292	1125.14293
5/8 *	0.6250 ... 0.5820	15.88 ... 14.88	1125.15882	1125.15883
Collet Sets come in Standard and UP *Sizes are included in Sets			1125.00002	1125.00003
9 Collets and 1 Tray				



ER 16 – ER 25

DM/ER Metallic Sealed Collets

Metric Collets

Clamping Capacity		ER 16 DM	ER 20 DM	ER 25 DM
[mm]	[inch]	Part No.	Part No.	Part No.
3.00	0.1181	1216.03000*	1220.03000*	
4.00	0.1575	1216.04000*	1220.04000*	
5.00	0.1969		1220.05000*	
5.00 ... 4.50	0.1969 ... 0.1772	1216.05000		
6.00	0.2362		1220.06000*	1225.06000*
6.00 ... 5.50	0.2362 ... 0.2165	1216.06000		
7.00 ... 6.50	0.2756 ... 0.2559	1216.07000	1220.07000	
8.00 ... 7.50	0.3150 ... 0.2953	1216.08000	1220.08000	1225.08000
9.00 ... 8.50	0.3543 ... 0.3347	1216.09000	1220.09000	
10.00 ... 9.50	0.3937 ... 0.3740	1216.1000	1220.10000	1225.10000
11.00 ... 10.50	0.4330 ... 0.4134		1220.11000	
12.00 ... 11.50	0.4724 ... 0.4528		1220.12000	1225.12000
13.00 ... 12.50	0.5118 ... 0.4921		1220.13000	
14.00 ... 13.50	0.5512 ... 0.5315			1225.14000
16.00 ... 15.50	0.6300 ... 0.6102			1225.16000
Metric Metallic Sealed Collet Set		1216.00000	1220.00000	1225.00000

Designed and patented by **REGO-FIX®**, our metallic sealed collets will seal the tool to the collet and the collet to the toolholder.

Universal Fit

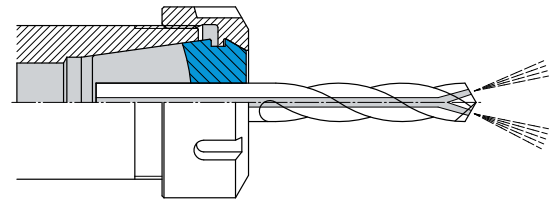
Will work with any standard or friction bearing nut; no need to purchase any special coolant nuts or disks for coolant sealing.

High Pressure

For applications up to 2000 psi (150 bar).

Accuracy

All DM/ER metallic sealed collets are Ultra-Precision (UP) accuracy: 0.005 mm (0.0002") TIR.



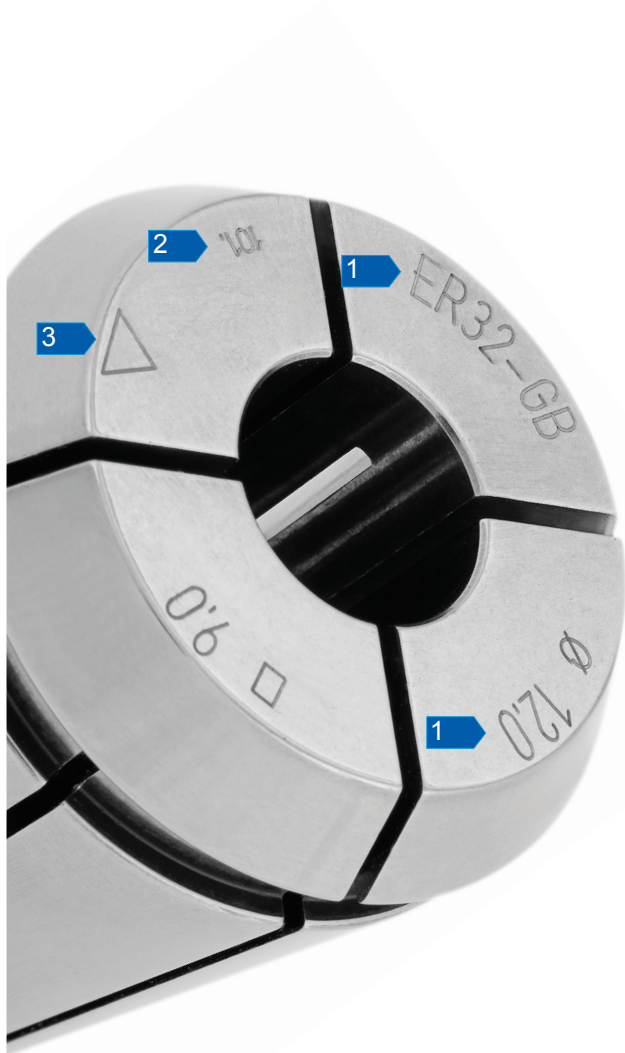
ER METALLIC SEALED COLLETS

True Inch Collets

Ø	Clamping Capacity		ER 16 DM	ER 20 DM	ER 25 DM
	[inch]	[mm]	Part No.	Part No.	Part No.
1/8	0.1250	3.18	1216.03182*	1220.03182*	
3/16	0.1875	4.76	1216.04762*	1220.04762*	
1/4	0.2500	6.35		1220.06352*	1225.06352*
1/4	0.2500 ... 0.2303	6.35 ... 5.85	1216.06352		
5/16	0.3125 ... 0.2929	7.94 ... 7.44	1216.07942	1220.07942	1225.07942
3/8	0.3750 ... 0.3556	9.53 ... 9.03	1216.09532	1220.09532	1225.09532
7/16	0.4375 ... 0.4177	11.11 ... 10.61		1220.11112	1225.11112
1/2	0.5000 ... 0.4803	12.70 ... 12.20		1220.12702	1225.12702
9/16	0.5625 ... 0.5425	14.29 ... 13.79			1225.14292
5/8	0.6250 ... 0.6055	15.88 ... 15.38			1225.15882
Inch Metallic Sealed Collet Set			1216.00002	1220.00002	1225.00002

*Sizes listed with no clamping range are produced to maintain the lowest T.I.R. possible. Larger diameter collets have a 0.020" (0.5 mm) range.

Tap Collets



Swiss Quality

Made in Switzerland to ISO 9001/ISO 14001.

1 **Marking**
Type and size (reduces collet selection errors).

2 **Traceability**
Lot number marking on all products for traceability through the entire manufacturing process.

3 **Original REGO-FIX®**
REGO-FIX® is the inventor of the worldwide standardized ER collet system. Our extensive experience results in a well-engineered system. When buying ER collets please note the **REGO-FIX®** quality seal \triangle on the front of the collet.

Broad Product Range

Offered in ER-GB 11 through ER-GB 40 Series
Available in DIN, ISO, JIS and other standards.

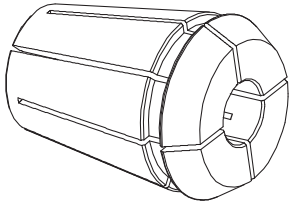
Positive Tap Drive

ER-GB tap collets are designed with a square drive that secures the tap and provides a positive drive for the tapping process.

Matched Tooling System

With the tapping collet, toolholder, clamping nut and spanner all manufactured by **REGO-FIX®** – the highest in tool precision and tool life is achieved.

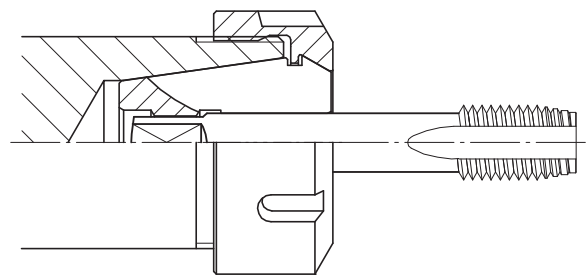
Rigid Tap Collets



ER-GB Rigid Tap Collets With internal square

REGO-FIX® ER-GB rigid tapping collets are manufactured with an internal square that provides a positive engagement of the tap shank square. They are intended for use on CNC machines that have synchronized machine spindle speed and feed rate. Machines that have such “rigid” tapping capabilities do not require the use of axial compensating type tooling.

ER-GB tap collets can be used in any standard ER style toolholder manufactured to DIN 6499 specifications. These rigid tapping collets are compatible with taps per ANSI, DIN, ISO and JIS standards and are available in a wide offering of both inch and metric sizes.

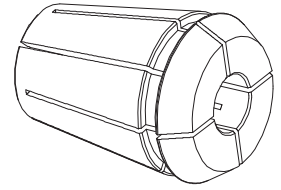


ER RIGID TAPPING COLLETS

ER-GB Rigid Tapping Collets Inch Sizes

Shank (d) [inch]	Square (SW) [inch]	L2 [mm]	Pipe Tap	ER 11-GB Part No.	ER 16-GB Part No.	ER 20-GB Part No.	ER 25-GB Part No.
0.141	0.110	14		1411.03585	1416.03585		
0.168	0.131	18			1416.04275	1420.04275	1425.04275
0.194	0.152	18			1416.04935	1420.04935	1425.04935
0.220	0.165	18			1416.05595	1420.05595	1425.05595
0.255	0.191	18			1416.06485	1420.06485	1425.06485
0.318	0.238	18			1416.08085	1420.08085	1425.08085
0.323	0.242	22				1420.08215	1425.08215
0.367	0.275	22				1420.09325	1425.09325
0.381	0.286	22				1420.09685	1425.09685
0.429	0.322	25					1425.10905
0.437	0.328	25	•				1425.11104
0.480	0.360	25					1425.12195

Rigid Tap Collets

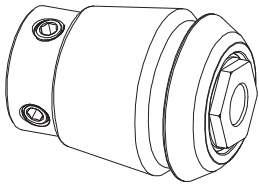


ER RIGID TAPPING COLLETS

ER-GB Rigid Tapping Collets

Metric Sizes

Shank (d) [mm]	Square (SW) [mm]	L2 [mm]	STD	ER 11-GB Part No.	ER 16-GB Part No.	ER 20-GB Part No.	ER 25-GB Part No.
2.8	2.1	12	DIN	1411.02800			
3.5	2.7	14	DIN	1411.03500			
4.0	3.0	14	DIN	1411.04000			
4.0	3.15/3.2	18	ISO, JIS		1416.04002	1420.04002	1425.04002
4.5	3.4	18	DIN	1411.04500	1416.04500	1420.04500	1425.04500
5.0	4.0	18	ISO, JIS		1416.05002	1420.05002	1425.05002
5.5	4.3	18	DIN		1416.05500	1420.05500	1425.05500
5.5	4.5	18	JIS		1416.05501	1420.05501	1425.05501
6.0	4.5	18	JIS		1416.06001	1420.06001	1425.06001
6.0	4.9	18	DIN	1411.06000	1416.06000	1420.06000	1425.06000
6.2	5.0	18	JIS		1416.06201	1420.06201	1425.06201
6.3	5.0	18	ISO		1416.06302	1420.06302	1425.06302
7.0	5.5	18	DIN, JIS		1416.07000	1420.07000	1425.07000
7.1	5.6	18	ISO		1416.07102	1420.07102	1425.07102
8.0	6.2/6.3	22	DIN, ISO		1416.08000	1420.08000	1425.08000
8.5	6.5	22	JIS		1416.08501	1420.08501	1425.08501
9.0	7.0/7.1	22	DIN, ISO		1416.09000	1420.09000	1425.09000
10.0	8.0	25	DIN, ISO			1420.10000	1425.10000
10.5	8.0	25	JIS			1420.10501	1425.10501
11.0	9.0	25	DIN			1420.11000	1425.11000
11.2	9.0	25	ISO			1420.11202	1425.11202
12.0	9.0	25	DIN				1425.12000
12.5	10.0	25	ISO, JIS				1425.12502
14.0	11.0/11.2	25	DIN, ISO, JIS				1425.14000
15.0	12.0	25	JIS				1425.15001
16.0	12.0	25	DIN				1425.16000



Compensating Tap Collets

ER Type Axial Compensating Tap Collets

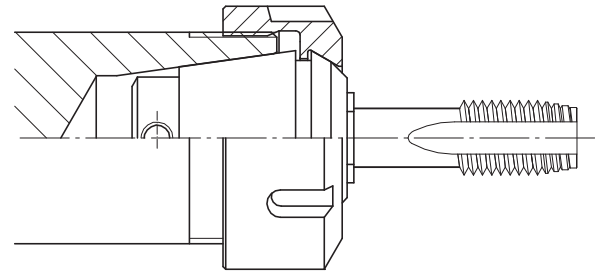
The ET1 type axial compensating tap collet offers a smart and cost effective tool holding option for machines that need synchronization for tapping applications. These tap collets offer many advantages:

- Fully interchangeable with ER type collets – can be used in any standard ER toolholder
- No expensive tapping tools or special holders are necessary
- Compact and very robust design
- Spring tension is varied by tap size – providing the matching tension for optimum results

Recommended Tapping Process:

Use a fast approach, then feed the tap with approximately 95% of the pitch value, which will use 20-30% of the compensating stroke when the spindle rotation and the feed movement are simultaneously reversed.

The return feed should be made with 100% of the pitch value, which maintains the sleeve of the tapping collet in the compensating stroke up to the tap disengagement. A quick return can then be programmed with the usual stroke security.



The relatively long axial compensation of the ET1 tap collet provides for ease of programming.

When tapping at very high speeds, an appropriate programming compensation may be necessary to balance the differences of inertia between the spindle and the feed movement on reversal of the tap.

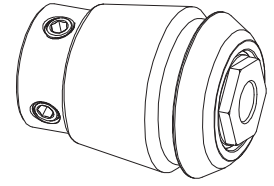
NOTE: These axial compensating tap collets are NOT suitable for coolant through applications.

ET1 Axial Compensating Tapping Collets

Inch Sizes

Shank (d) [inch]	Shank (d) [mm]	ET1-12 Part No. for ER 11 Series	ET1-16 Part No. for ER 16 Series	ET1-20 Part No. for ER 20 Series	ET1-25 Part No. for ER 25 Series
0.141	3.580	1512.03581	1516.03581	1520.03581	1525.03581
0.168	4.270		1516.04271	1520.04271	1525.04271
0.194	4.930		1516.04931	1520.04931	1525.04931
0.220	5.590		1516.05591	1520.05591	1525.05591
0.255	6.480			1520.06481	1525.06481
0.318	8.080				1525.08081
0.323	8.205				1525.08211
0.367	9.320				1525.09321
0.381	9.680				1525.09681

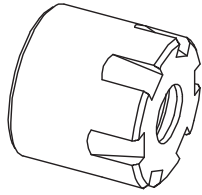
Compensating Tap Collets



ET1 Axial Compensating Tapping Collets

Metric Sizes

Shank (d) [mm]	STD	ET1-12 Part No. for ER 11 Series	ET1-16 Part No. for ER 16 Series	ET1-20 Part No. for ER 20 Series	ET1-25 Part No. for ER 25 Series
1.00	DIN	1512.01000			
1.40	DIN	1512.01400	1516.01400		
1.50	DIN	1512.01500			
1.60	DIN	1512.01600	1516.01600		
1.80	DIN	1512.01800	1516.01800		
2.00	ISO	1512.02000	1516.02000		
2.20	DIN	1512.02200	1516.02200	1520.02200	
2.24	ISO	1512.02240	1516.02240	1520.02240	
2.50	DIN, ISO	1512.02500	1516.02500	1520.02500	1525.02500
2.80	DIN, ISO	1512.02800	1516.02800	1520.02800	1525.02800
3.00	JIS	1512.03000	1516.03000	1520.03000	1525.03000
3.15	ISO	1512.03150	1516.03150	1520.03150	1525.03150
3.50	DIN	1512.03500	1516.03500	1520.03500	1525.03500
3.55	ISO	1512.03550	1516.03550	1520.03550	1525.03550
4.00	DIN, ISO, JIS		1516.04000	1520.04000	1525.04000
4.50	DIN, ISO		1516.04500	1520.04500	1525.04500
5.00	ISO, JIS		1516.05000	1520.05000	1525.05000
5.50	DIN, ISO		1516.05500	1520.05500	1525.05500
5.60	ISO		1516.05600	1520.05600	1525.05600
6.00	DIN, JIS		1516.06000	1520.06000	1525.06000
6.20	JIS		1516.06200	1520.06200	1525.06200
6.30	ISO		1516.06300	1520.06300	1525.06300
7.00	DIN, JIS			1520.07000	1525.07000
7.10	ISO				1525.07100
8.00	DIN, ISO, JIS				1525.08000
8.50	JIS				1525.08500
9.00	DIN, ISO				1525.09000
10.00	DIN, ISO				1525.10000



ER Clamping Nuts

Standard and Coolant

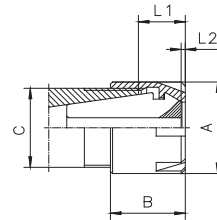
Standard Mini-Nuts

Provides high clamping force with Hi-Q feature

Type	Part No.	A [mm]	B [mm]	C	L1 [mm]	L2 [mm]
Hi-Q/ERM 8	3508.00000	12	10.8	M 10 x 0.75	4.3 ... 6.1	1.5
Hi-Q/ERM 11	3511.00000	16	12.0	M 13 x 0.75	5.7 ... 7.5	0.9
Hi-Q/ERM 16	3516.00000	22	18.4	M 19 x 1.00	8.0 ... 11.5	0.9
Hi-Q/ERM 20	3520.00000	28	19.0	M 24 x 1.00	8.0 ... 11.5	—
Hi-Q/ERM 25	3525.00000	35	20.0	M 30 x 1.00	8.5 ... 12.0	—

"M" refers to "Mini-nut"

See page 23 for all corresponding wrenches.

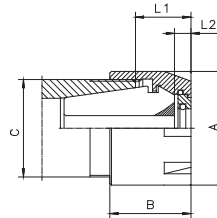


Coolant Mini-Nuts

Accepts coolant disks - see page 17

Type	Part No.	A [mm]	B [mm]	C	L1 [mm]	L2 [mm]
Hi-Q/ERMC 16	3516.20000	22	22.0	M 19 x 1.00	11.5 ... 15.0	4.5
Hi-Q/ERMC 20	3520.20000	28	24.0	M 24 x 1.00	13.0 ... 16.5	5.0
Hi-Q/ERMC 25	3525.20000	35	25.0	M 30 x 1.00	13.5 ... 17.0	5.0

See page 23 for all corresponding wrenches.

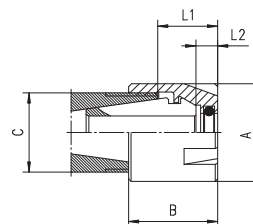


ER 11 Coolant Mini-Nuts

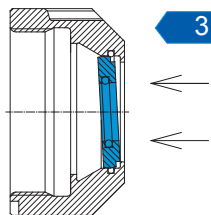
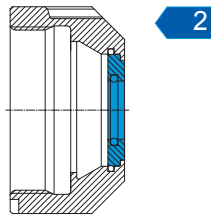
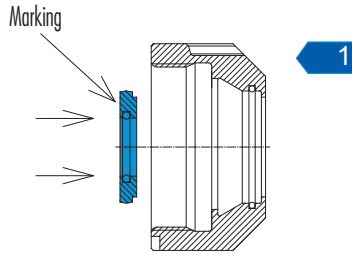
With built in coolant disk

Type	Part No.	Range [mm]	Range [inch]	Ø [inch]
Hi-Q/ERMC 11 Ø 3.0	3511.20300	3.00 ... 2.50	0.1181 ... 0.0984	3/32
Hi-Q/ERMC 11 Ø 3.5	3511.20350	3.50 ... 3.00	0.1378 ... 0.1181	1/8
Hi-Q/ERMC 11 Ø 4.0	3511.20400	4.00 ... 3.50	0.1575 ... 0.1378	5/32
Hi-Q/ERMC 11 Ø 4.5	3511.20450	4.50 ... 4.00	0.1772 ... 0.1575	—
Hi-Q/ERMC 11 Ø 5.0	3511.20500	5.00 ... 4.50	0.1969 ... 0.1772	3/16
Hi-Q/ERMC 11 Ø 5.5	3511.20550	5.50 ... 5.00	0.2165 ... 0.1969	7/32
Hi-Q/ERMC 11 Ø 6.0	3511.20600	6.00 ... 5.50	0.2362 ... 0.2165	—
Hi-Q/ERMC 11 Ø 6.5	3511.20650	6.50 ... 6.00	0.2559 ... 0.2362	1/4
Hi-Q/ERMC 11 Ø 7.0	3511.20700	7.00 ... 6.50	0.2756 ... 0.2559	—

See page 23 for all corresponding wrenches.



Coolant Disk



ER Coolant Through Sealing Disk System

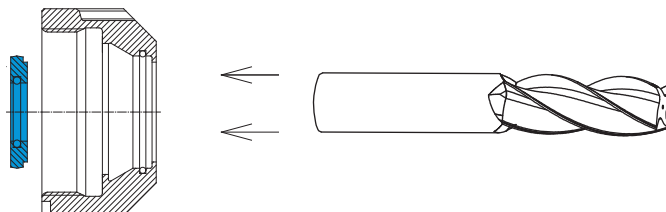
REGO-FIX® patented ER coolant through sealing disk system is a simple yet secure means of providing coolant through the tool with high-pressure coolant. A **REGO-FIX®** coolant nut (see page 15) is required to accept the metal disk that is selected to match the tool shank diameter and simply snapped into the head of the ER coolant nut. Features of this system include:

- Disks provide a seal for pressure applications up to 2000 psi (150 bar)
- Provides maximum cooling and lubrication – extending tool life and improving chip removal
- Sealing disks are interchangeable and provide a 0.5 mm (0.020") clamping range
- Disks do not contact the ER collet – allowing a minimum TIR to be achieved
- Disks seal off the collet and holder – keeping dirt and chips from entering the collet slots
- Special chemical resistant Viton O-rings are replaceable if lost or damaged

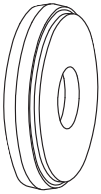
Assembling of the Sealing Disk System

- 1** **Assembly of the Sealing Disk:** Insert the small diameter of the disk into the center of the coolant nut and apply even pressure until the disk is properly seated and snaps into the nut.
- 2** **Important:** The disk must be flush with the outside of the nut and the marking on the disk must be readable when looking on the inside of the nut from the backside.
- 3** **Removing the sealing disk:** To remove the disk, simply press evenly on the outside of the disk until it snaps out.

IMPORTANT!
 When inserting the cutting tool, always insert the bottom end of the tool through the top of the nut/disk assembly as shown in the illustration below. Do NOT insert the cutting tip of the tool through the coolant disk, as this could result in cutting or damaging the O-ring.



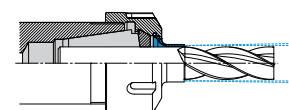
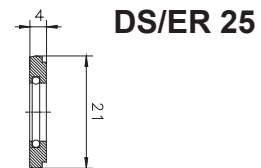
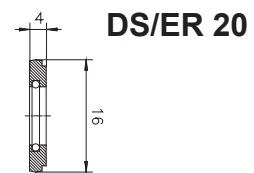
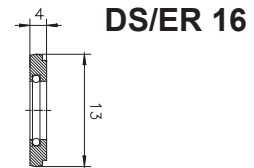
Coolant Disk



Coolant Disk DS/ER 16, DS/ER 20 and DS/ER 25

Sealing Capacity		Ø [inch]	DS/ER 16 Part No.	DS/ER 20 Part No.	DS/ER 25 Part No.
[mm]	[inch]				
3.00 ... 2.50	0.1181 ... 0.0984	3/32	3916.00300	3920.00300	3925.00300
3.50 ... 3.00	0.1378 ... 0.1181	1/8	3916.00350	3920.00350	3925.00350
4.00 ... 3.50	0.1575 ... 0.1378	5/32	3916.00400	3920.00400	3925.00400
4.50 ... 4.00	0.1772 ... 0.1575		3916.00450	3920.00450	3925.00450
5.00 ... 4.50	0.1969 ... 0.1772	3/16	3916.00500	3920.00500	3925.00500
5.50 ... 5.00	0.2165 ... 0.1969	7/32	3916.00550	3920.00550	3925.00550
6.00 ... 5.50	0.2362 ... 0.2165		3916.00600	3920.00600	3925.00600
6.50 ... 6.00	0.2559 ... 0.2362	1/4	3916.00650	3920.00650	3925.00650
7.00 ... 6.50	0.2756 ... 0.2559		3916.00700	3920.00700	3925.00700
7.50 ... 7.00	0.2953 ... 0.2756	9/32	3916.00750	3920.00750	3925.00750
8.00 ... 7.50	0.3150 ... 0.2953	5/16	3916.00800	3920.00800	3925.00800
8.50 ... 8.00	0.3347 ... 0.3150		3916.00850	3920.00850	3925.00850
9.00 ... 8.50	0.3543 ... 0.3347	11/32	3916.00900	3920.00900	3925.00900
9.50 ... 9.00	0.3740 ... 0.3543	3/8	3916.00950	3920.00950	3925.00950
10.00 ... 9.50	0.3937 ... 0.3740		3916.01000	3920.01000	3925.01000
10.50 ... 10.00	0.4134 ... 0.3937	13/32	–	3920.01050	3925.01050
11.00 ... 10.50	0.4330 ... 0.4134		–	3920.01100	3925.01100
11.50 ... 11.00	0.4528 ... 0.4330	7/16	–	3920.01150	3925.01150
12.00 ... 11.50	0.4724 ... 0.4528	15/32	–	3920.01200	3925.01200
12.50 ... 12.00	0.4921 ... 0.4724		–	3920.01250	3925.01250
13.00 ... 12.50	0.5118 ... 0.4921	1/2	–	3920.01300	3925.01300
13.50 ... 13.00	0.5315 ... 0.5118		–	–	3925.01350
14.00 ... 13.50	0.5512 ... 0.5315		–	–	3925.01400
14.50 ... 14.00	0.5709 ... 0.5512	9/16	–	–	3925.01450
15.00 ... 14.50	0.5905 ... 0.5709		–	–	3925.01500
15.50 ... 15.00	0.6102 ... 0.5905	19/32	–	–	3925.01550
16.00 ... 15.50	0.6300 ... 0.6102	5/8	–	–	3925.01600

When choosing sealing disks, always select the size closest to the upper range without exceeding it.



NEW Coolant Flush Disk available – see www.rego-fix.com for details

COOLANT DISK SYSTEM

Cylindrical Toolholder



Cylindrical Toolholders

REGO-FIX® cylindrical ER collet holders selection provides for a wide range of applications in both Swiss Type Automatic Machines, as well as for extensions used in milling, drilling or reaming applications.

Swiss Quality

Made in Switzerland to ISO 9001/ISO 14001.

1

Marking

Type and size (reduces collet selection errors).

2

Traceability

Lot number marking on all products for traceability through the entire manufacturing process.

3

Original REGO-FIX®

REGO-FIX® is the inventor of the worldwide standard ER collet system and offers the widest selection of ER cylindrical extensions in the world. Our extensive experience guarantees results for a well-engineered system. When buying ER products, look for the **REGO-FIX®** quality triangle \triangle on all our products.

Broad Product ER Size Range

Offered in ER8M to ER25M in the mini-nut profile

Multiple Cylindrical Types

Wide variety of shank types - including round, with flats, and in double sided design. Offered in both inch and metric sizes.

Lowest Run Out

Unmatched run out of $< 0.0002''$ ($5 \mu\text{m}$) from shank to ER cavity

Unmatched Shank Accuracy

Cylindrical shanks are made to h6 standards – providing unmatched precision in clamping accuracy and extended tool life.

CYL/ERM (Round Shank)

This style of ER cylindrical holder is designed with a round shank and comes standard with a Hi-Q mini-style clamping nut, which provides up to 80% more clamping force than standard competitive ER nuts. This style holder can be used on different types of Swiss Type Automatic machines, as well as extensions in milling, drilling or reaming applications.

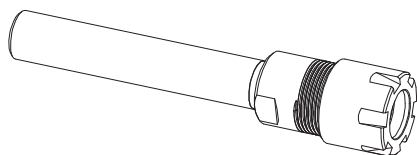
CYD/ER MF (Shanks with Flat)

This style of ER collet holder is designed with a precision flat, which is used in a variety of automatic lathes. The wide offering of inch and metric shanks, along with a variety of ER sizes and lengths, can meet most any Swiss Type Automatic application, and turret or tool block requirement.

CYD/ER MF (Double Sided Holder with Flat)

REGO-FIX® offers a wide selection of standard double-sided ER collet holders with a flat for the many Swiss Type Automatics that can now accept such holders for increased tool flexibility.

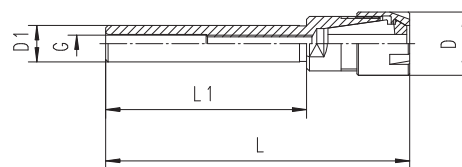
Round Shank ER Cylindrical Holders with Mini-Nut



Inch CYL Holders

Type	Part No.	D [mm]	D1 h6 [mm]	L [mm]	L1 [mm]
CYL 3/8" x 070 / ER 8 M	2609.20841	12	9.52	93.0	70
CYL 1/2" x 140 / ER 11 M	2613.21191	16	12.7	169.5	140
CYL 1/2" x 140 / ER 16 M	2613.21691	22	12.7	177.0	140
CYL 5/8" x 150 / ER 11 M	2616.21191	16	15.87	172.5	150
CYL 3/4" x 155 / ER 16 M	2619.21691	22	19.05	181.5	155
CYL 3/4" x 100 / ER 25 M	2619.22561	35	19.05	147.0	100
CYL 1" x 155 / ER 20 M	2625.22091	28	25.5	181.5	155

Collet holder is provided with clamping nut and presetting screw.

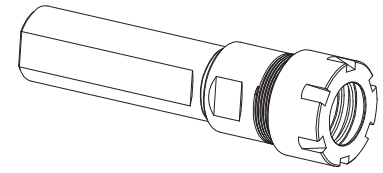


Metric CYL Holders

Type	Part No.	D [mm]	D1 h6 [mm]	L [mm]	L1 [mm]
CYL 06 x 045 / ER 11 M	2606.21120	16	6	71.5	45
CYL 07 x 045 / ER 11 M	2607.21120	16	7	71.5	45
CYL 08 x 080 / ER 8 M	2608.20850	12	8	106.0	80
CYL 08 x 056 / ER 11 M	2608.21130	16	8	82.5	56
CYL 10 x 060 / ER 16 M	2610.21630	22	10	98.5	60
CYL 12 x 080 / ER 8 M	2612.20850	12	12	97.0	80
CYL 12 x 080 / ER 16 M	2612.21650	22	12	118.5	80
CYL 15 x 100 / ER 20 M	2615.22060	28	15	142.5	100
CYL 16 x 150 / ER 11 M	2616.21190	16	16	171.0	150
CYL 16 x 100 / ER 20 M	2616.22060	28	16	142.5	100
CYL 20 x 155 / ER 16 M	2620.21690	22	20	181.5	155
CYL 25 x 155 / ER 20 M	2625.22090	28	25	181.5	155

Collet holder is provided with clamping nut and presetting screw.

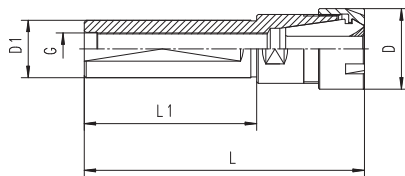
ER Cylindrical Holder with Flats



Inch CYL MF Holders

Type	Part No.	D [mm]	D1 h6 [mm]	L [mm]	L1 [mm]
CYL 5/8" x 043 / ER 8 MF	2616.20811	12	15.875	58	43
CYL 3/4" x 115 / ER 11 MF	2619.21173	16	19.05	135	115
CYL 3/4" x 038 / ER 16 MF	2619.21613	22	19.05	66	38
CYL 3/4" x 050 / ER 16 MF	2619.21623	22	19.05	78	50
CYL 3/4" x 070 / ER 16 MF	2619.21643	22	19.05	98	70
CYL 3/4" x 120 / ER 16 MF	2619.21683	22	19.05	148	120
CYL 3/4" x 140 / ER 16 MF	2619.21693	22	19.05	168	140
CYL 1" x 065 / ER 16 MF	2625.21643	22	25.4	93	65
CYL 1" x 075 / ER 16 MF	2625.21653	22	25.4	103	75
CYL 1" x 100 / ER 16 MF	2625.21663	22	25.4	128	100
CYL 1" x 100 / ER 20 MF	2625.22063	28	25.4	128	100
CYL 1" x 140 / ER 20 MF	2625.22093	28	25.4	168	140

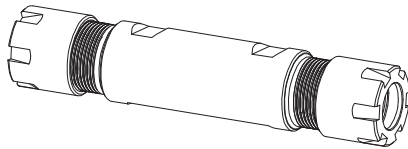
Collet holder is provided with clamping nut and presetting screw.



Metric CYL MF Holders

Type	Part No.	D [mm]	D1 h6 [mm]	L [mm]	L1 [mm]
CYL 16 x 038 / ER 11 MF	2616.21112	16	16	58	38
CYL 16 x 140 / ER 11 MF	2616.21192	16	16	160	140
CYL 16 x 035 / ER 16 MF	2616.21612	22	16	63	35
CYL 20 x 050 / ER 16 MF	2620.21622	22	20	78	50
CYL 20 x 070 / ER 16 MF	2620.21642	22	20	98	70
CYL 20 x 120 / ER 16 MF	2620.21682	22	20	148	120
CYL 20 x 140 / ER 16 MF	2620.21692	22	20	148	140
CYL 22 x 038 / ER 16 MF	2622.21612	22	22	66	38
CYL 22 x 070 / ER 16 MF	2622.21642	22	22	98	70
CYL 22 x 100 / ER 16 MF	2622.21662	22	22	128	100
CYL 22 x 080 / ER 20 MF	2622.22052	28	22	119	80
CYL 22 x 070 / ER 25 MF	2622.22542	35	22	117	70
CYL 25 x 065 / ER 16 MF	2625.21642	22	25	93	65
CYL 25 x 100 / ER 20 MF	2625.22062	28	25	128	100
CYL 25 x 154 / ER 20 MF	2625.22002	28	25	182	154
CYL 25 x 075 / ER 25 MF	2625.22552	35	25	122	75
CYL 25 x 145 / ER 25 MF	2625.22592	35	25	181	145
CYL 32 x 070 / ER 25 MF	2632.22542	35	32	100	70

Collet holder is provided with clamping nut and presetting screw.



ER Cylindrical Holder

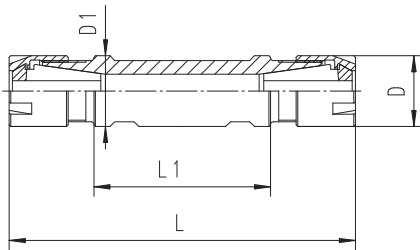
Double Ended

CYLINDRICAL TOOLHOLDERS

Inch CYD MF Holders

Type	Part No.	D [mm]	D1 h6 [mm]	L [mm]	L1 [mm]
CYD 5/8" x 015 / ER 8 MF	2616.20805	12	15.875	45	15
CYD 5/8" x 025 / ER 8 MF	2616.20895	12	15.875	55	25
CYD 3/4" x 040 / ER 11 MF	2619.21125	16	19.05	80	40
CYD 3/4" x 070 / ER 11 MF	2619.21145	16	19.05	110	70
CYD 3/4" x 090 / ER 11 MF	2619.21165	16	19.05	130	90
CYD 3/4" x 055 / ER 16 MF	2619.21635	22	19.05	107	55
CYD 1" x 062 / ER 16 MF	2625.21635	22	25.4	118	62

Collet holder is provided with clamping nuts.

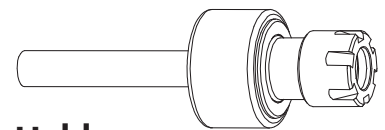


Metric CYD MF Holders

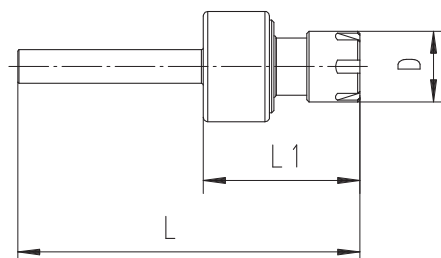
Type	Part No.	D [mm]	D1 h6 [mm]	L [mm]	L1 [mm]
CYD 16 x 050 / ER 11 MF	2616.21124	16	16	90	50
CYD 20 x 030 / ER 11 MF	2620.21114	16	20	70	30
CYD 20 x 050 / ER 11 MF	2620.21124	16	20	90	50
CYD 20 x 055 / ER 16 MF	2620.21634	22	20	107	55
CYD 22 x 055 / ER 16 MF	2622.21634	22	22	111	55
CYD 22 x 075 / ER 16 MF	2622.21654	22	22	131	75
CYD 25 x 062 / ER 16 MF	2625.21634	22	25	118	62
CYD 32 x 055 / ER 20 MF	2632.22034	28	32	111	55
CYD 32 x 075 / ER 20 MF	2632.22054	28	32	131	75

Collet holder is provided with clamping nuts.

Mini-Floating Holders



MPH Floating Holders



Type	Part No.	D [mm]	L [mm]	L1 [mm]
MPH 8 / ER 11 M	2608.91107	16	77	35
MPH 10 / ER 11 M	2610.91107	16	77	35
MPH 3/4" / ER 11 M	2619.91108	16	105	35
MPH 20 / ER 11 M	2620.91107	16	77	35
MPH 22 / ER 11 M	2622.91107	16	77	35
MPH 25 / ER 11 M	2625.91107	16	77	35
MPH 1" / ER 11 M	2625.91108	16	77	35

0.5mm of total radial float for each type listed above.
Max RPM 2,000

SwissQuick™ ER to ER Adapters

SWISS TYPE TOOLING



SwissQuick –ER Quick Change System

REGO-FIX® offers an expanded line of the SwissQuick adapter holders, which provide a rigid ER to ER reduction in a variety of sizes and thread types. This adapter system also offers a unique means to preset tool assemblies off line for tool length, and switch out on a Swiss Automatic in a matter of seconds, eliminating the time consuming process of touching off newly installed tools. Both fine thread and coarse thread options are available, with the solid ER connections ranging from ER11 to ER25.

Run Out

Inside to outside taper is < 3 µm (0.0001") TIR

Taper Tolerance

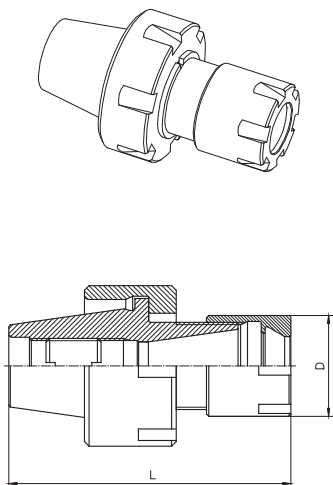
AT3 taper tolerance for ultimate fit and improved tool life

Standard with Hi-Q ER Clamping Nuts

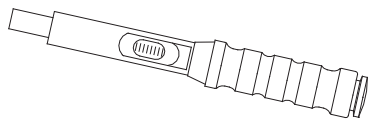
Guaranteed the highest clamping force possible for maximum holding power

Balanced Q+ Design

SwissQuick adapters are precision balanced at G2.5 @ 22,000 rpm. Excellent for use with live spindle tooling applications.

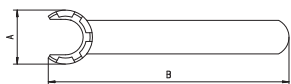


Type	Part No.	L [mm]	L1 [mm]	D [mm]
Fine Thread Main Nut (Mini)				
ER 11 M / ER 8 M	7161.11080	33	16.5	12
ER 16 M / ER 11 M	7161.16110	42.5	18.5	16
ER 20 M / ER 16 M	7161.20160	55.5	28	22
ER 25 M / ER 16 M	7161.25160	60.5	28	22
ER 25 M / ER 20 M	7161.25200	60.5	28	28
Coarse Thread Main Nut (Hex) and (Spanner)				
ER 11 / ER 8 M	H 7162.11080	33	16.5	12
ER 20 / ER 16 M	H 7162.20160	55.5	28	22
ER 25 / ER 16 M	S 7162.25160	60.5	28	22
ER 25 / ER 20 M	S 7162.25200	60.5	28	28
See page 23 for corresponding wrenches				
Call for availability of additional adapter sizes				



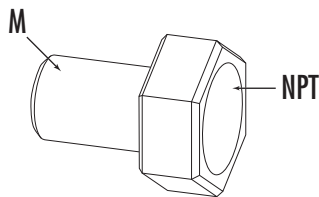
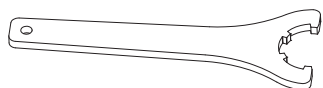
Torque Wrenches

Type	Part No.	Range	
		[Nm]	[ft.lbs]
Micro	7150.05050	05 ... 50	3.7 ... 37
Small	8020.08060	08 ... 60	5.9 ... 44
Medium	8020.20100	20 ... 100	14.8 ... 73.8



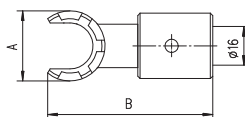
Spanner Wrenches

Type	Part No.	Series	A [mm]	B [mm]
Mini Type				
E 8 M	7113.08000	ER 8	12.4	74
E 11 M	7113.11000	ER 11	16.8	95
E 16 M	7113.16000	ER 16	22.5	117
E 20 M	7113.20000	ER 20	29.0	129
E 25 M	7113.25000	ER 25	36.0	141
Hex and Spanner Type				
ER 11 GS 17	7112.11000	ER 11	17	95
ER 20 GS 30	7112.20010	ER 20	30	172
E 25	7111.25000	ER 25	65	210



Coolant fittings for Cylindrical Holders

Part No.	Thread	Fitting
A12X1-1/8CF	M12 X 1	NPT 1/8"
A14X1-1/4CF	M14 X 1	NPT 1/4"



Spanner Heads for Torque Wrenches

Type	Part No.	Series	A [mm]	B [mm]
Mini Type				
A-E 8 M	7153.08000	ER 8	12.4	53.0
A-E 11 M	7153.11000	ER 11	16.8	54.0
A-E 16 M	7153.16000	ER 16	22.5	56.0
A-E 20 M	7153.20000	ER 20	29.0	68.0
A-E 25 M	7153.25000	ER 25	36.0	70.0
Hex and Spanner Type				
ER 11 A-GS 17	7152.11010	ER 11	17	60
ER 20 A-GS 30	7152.20010	ER 20	60	65.5
ER 25 A-E 25	7151.25000	ER 25	65	72

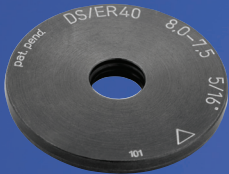
PROGRESS THROUGH INNOVATION

Behind every product stands experienced people. Very motivated, well trained employees strive daily for "Swiss Quality". Their ideas, experience and skills are put to use in the highly efficient and modern **REGO-FIX®** manufacturing facility. Excellent cooperation of dynamic teams promotes the innovative spirit and encourages continuous improvement of existing products and the development of new ones.



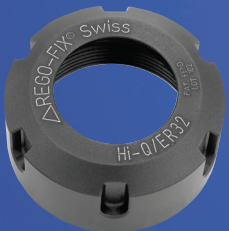
ER Collet System

- Widest used collet system in the world
- Patented by **REGO-FIX®** in 1973
- Made into DIN standard 6499 in 1993
- Metallic Sealed Coolant Collets



ER Coolant Disk System

- Innovative system for coolant through tooling
- Up to 2000 psi
- Now available in Coolant Flush Design



Hi-Q / ER Clamping Nuts

- Introduced in 1998
- Up to 50% more clamping force than standard nuts
- The most precise, balanced and highest clamping force ER nut ever made



Hi-Q Balancing Ring System

- Introduced in 2002
- The first balancing system to fit standard holders to make them balanceable
- Balance up to 42,000 rpms



powRgrip® "press-fit" Tool Holding System

- Introduced in 2002 and now the fastest growing holding system in the world
- The ultimate in clamping force, precision, flexibility, balance and ease of use
- Revolutionary system developed as a superior alternative to hydraulic and shrink fit holding systems

REGO-FIX® Tool Corp.

7752 Moller Rd.
Indianapolis, IN 46268

Phone: (317) 870-5959
Email: info@REGO-FIX.COM

Toll Free: (800) 999-7346
WWW.REGO-FIX.COM

Fax: (317) 870-5955