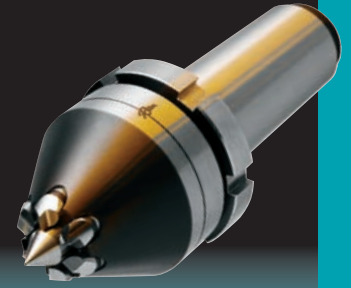




Mechanical Face Drivers

TYPE 40

Driving Diameter Range: 0.32" - 0.67"



Selecting the Face Driver components:

- #1 Determine the Face Driver model with the type of mounting required for the machine.
- #2 If mounting directly to machine spindle, verify spindle size and select appropriate spindle adapter.
- #3 Choose the center point with the diameter range closest to the center hole diameter.
- #4 Determine machine spindle rotation and driving diameter to select the correct drive pins.
Rotation is determined by looking directly at the spindle face or chuck face.
(For detailed instructions on selecting a face driver, see page 45).

Mounting Styles Available for Type 40



Morse Taper*



Flange Mount*

* All mechanical styles can be chucked.

#1 FACE DRIVER	
Order Code	Mounting Style
4003	#3 Morse Taper*
4004	#4 Morse Taper*
4005	#5 Morse Taper*
40FM	Flange Mount*

* All mechanical styles can be chucked.

#2 SPINDLE ADAPTER (For direct mount only)	
Order Code	Spindle Size
708037	A2-5
708038	A2-6
708039	A2-8
708040	A2-11

#3 CENTER POINT		#4 DRIVE PINS (3 pins required)				
Order Code	Center Hole Dia. Range	Order Code	Counterclockwise (Right)		Clockwise (Left)	
			Outer Driving Diameter	Inner Driving Diameter	Outer Driving Diameter	Inner Driving Diameter
C4001	0 - 0.200	P4001	0.32	0.20	-	-
		P4002	-	-	0.32	0.20
		P4003	0.43	0.20	-	-
		P4004	-	-	0.43	0.20
		P4005	0.67	0.20	-	-
		P4006	-	-	0.67	0.20

TO ORDER: A complete unit consists of a face driver, center point and drive pins. For direct mounts, a spindle adapter must be added.

#1 Face Driver order code: _ _ _ _

#2 Spindle Adapter order code: _ _ _ _ _
(only required for direct mount)

#3 Center Point (included with Type 40)

#4 Drive Pins order code: _ _ _ _ _ (3 pins required)