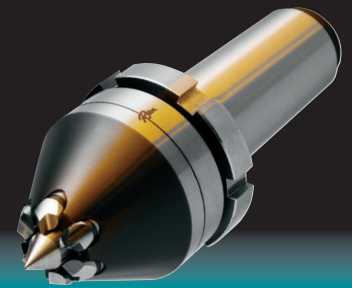




Mechanical Face Drivers

TYPE 43

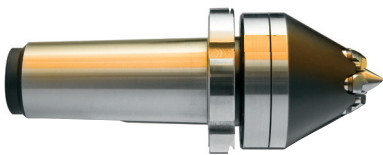
Driving Diameter Range: 0.51" - 1.02"



Selecting the Face Driver components:

- #1 Determine the Face Driver model with the type of mounting required for the machine.
 - #2 If mounting directly to machine spindle, verify spindle size and select appropriate spindle adapter.
 - #3 Choose the center point with the diameter range closest to the center hole diameter.
 - #4 Determine machine spindle rotation and driving diameter to select the correct drive pins.
- Rotation is determined by looking directly at the spindle face or chuck face.
(For detailed instructions on selecting a face driver, see page 45).

Mounting Styles Available for Type 43



Morse Taper*



Flange Mount*

* All mechanical styles can be chucked.

#1 FACE DRIVER	
Order Code	Mounting Style
4303	#3 Morse Taper
4304	#4 Morse Taper
4305	#5 Morse Taper
43FM	Flange Mount
430150	1.5 Straight Shank

#2 SPINDLE ADAPTER (For direct mount only)	
Order Code	Spindle Size
708037	A2-5
708038	A2-6
708039	A2-8
708040	A2-11

#3 CENTER POINT		#4 DRIVE PINS (3 pins required)				
Order Code	Center Hole Dia. Range	Order Code	Counterclockwise (Right)		Clockwise (Left)	
			Outer Driving Diameter	Inner Driving Diameter	Outer Driving Diameter	Inner Driving Diameter
C4301 C4302	0 - 0.320 0.256- 0.376	P4301	0.51	0.39	-	-
		P4302	-	-	0.51	0.39
		P4303	0.71	0.39	-	-
		P4304	-	-	0.71	0.39
		P4305	1.02	0.39	-	-
		P4306	-	-	1.02	0.39
C4303	0.335 - 0.472	P4333	0.71	0.51	-	-
		P4334	-	-	0.71	0.51
		P4335	1.02	0.51	-	-
		P4336	-	-	1.02	0.51
C4304	0.453 - 0.591	P4345	1.02	0.65	-	-
		P4346	-	-	1.02	0.65
C4305	0.571 - 0.709	P4355	1.02	0.77	-	-
		P4356	-	-	1.02	0.77

TO ORDER: A complete unit consists of a face driver, center point and drive pins. For direct mounts, a spindle adapter must be added.

#1 Face Driver order code: _____

#2 Spindle Adapter order code: _____
(only required for direct mount)

#3 Center Point order code: _____

#4 Drive Pins order code: _____ (3 pins required. 5-pin version available on request.)