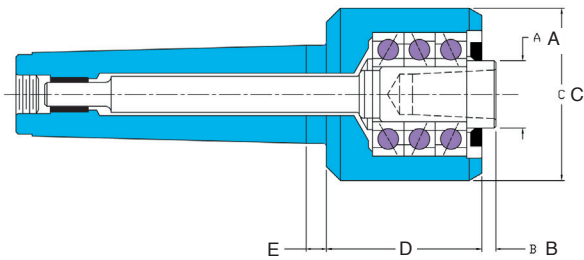




# Quick Point Live Centers, Sets and Replacement Points

- Accuracy guaranteed to  $\pm .00025$ .
- Interchangeable points reduce the need for several centers.
- Purchase individual replacement points or a complete set.
- Special points are available upon request.
- Mounting taper of points is 1:10.
- Safe storage container provided with a complete set.
- Point extractor for easy removal of points is included in the set or can be purchased separately.
- Optional C4T labyrinth bearing seal (see page 4)



A Quick Point Set includes: one live center, one male point, one female point, one tracer point, one bull nose point, and one point extractor.

LIVE CENTER*								Max. W. P.
Model	MT	A	B	C	D	E	RPM	Weight
49102	2	0.98	0.25	2.13	2.00	0.38	5000	100
49103	3	0.98	0.25	2.13	2.00	0.37	5000	350
49104	4	1.38	0.26	3.07	2.78	0.36	5500	550
49105	5	1.57	0.25	3.07	2.78	0.36	5500	1400

\*Live Center includes male point unless otherwise specified.

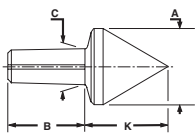
4 and 5 Morse Taper centers available with C4T labyrinth bearing seal upon request (see p. 4)

## QUICK POINT SETS

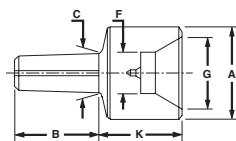
Model	Taper
49502	2
49503	3
49504	4
49505	5

## POINT EXTRACTORS

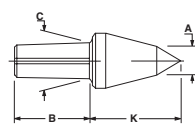
Model	Taper
49904	2, 3, 4
49905	5



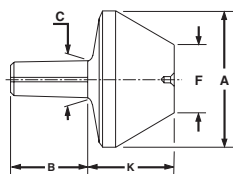
M - Male Point



F - Female Point



T - Tracer Point



BN - Bull Nose Point

Carbide tip male point available. See page 10.

QUICK POINTS								
Model	MT	Style	A	F	G	K	C	B
91031	2/3	M	1.00	-	-	1.17	0.47	0.96
91032	2/3	F	1.13	0.50	0.88	1.07	0.47	0.96
91033	2/3	T	0.38	-	-	1.30	0.47	0.96
91034	2/3	BN	1.75	0.88	-	1.17	0.47	0.96
91041	4	M	1.13	-	-	1.30	0.59	1.20
91042	4	F	1.38	0.63	1.13	1.21	0.59	1.20
91043	4	T	0.50	-	-	1.80	0.59	1.20
91044	4	BN	2.25	1.00	-	1.55	0.59	1.20
91051	5	M	1.50	-	-	1.65	0.87	1.44
91052	5	F	1.50	0.75	1.25	1.21	0.87	1.44
91053	5	T	0.50	-	-	2.12	0.87	1.44
91054	5	BN	2.75	1.50	-	1.58	0.87	1.44

Additional points shown on following page.