

# Standard Length Dead Centers

MORSE TAPER								
Model	Taper	P	B	C/A	D	·T	H	L
7101	1	3.31	2.12	0.475	0.396	0.250	0.14	1.00
7102	2	4.19	2.56	0.700	0.572	0.375	0.20	1.38
7103	3	5.25	3.19	0.938	0.778	0.500	0.27	1.69
7104	4	6.75	4.06	1.231	1.020	0.500	0.27	2.25
7105	5	8.50	5.19	1.748	1.475	0.625	0.39	2.75
7106	6	11.50	7.25	2.492	2.116	0.875	0.52	3.50
7107	7	15.00	10.00	3.270	2.750	1.000	0.77	4.00

JARNO TAPER								
Model	Taper	P	B	C/A	D	·T	H	L
7204	6	4.50	3.00	0.750	0.600	0.375	0.20	1.13
7205	6	5.50	3.00	0.750	0.600	0.375	0.20	2.19
7206	6	6.00	3.00	0.750	0.600	0.375	0.20	2.50
7207	7	5.25	3.50	0.875	0.700	0.375	0.20	1.19
7208	8	6.00	4.00	1.000	0.800	0.500	0.27	1.63
7209	9	6.75	4.50	1.125	0.900	0.500	0.27	1.88
7210	10	7.50	5.00	1.250	1.000	0.500	0.27	2.00
7211	11	8.25	5.50	1.375	1.100	0.500	0.27	2.00
7212	12	9.00	6.00	1.500	1.200	0.625	0.33	2.25
7213	13	9.75	6.50	1.625	1.300	0.625	0.33	2.50
7214	14	10.50	7.00	1.750	1.400	0.625	0.33	3.00
7215	15	11.25	7.50	1.875	1.500	0.625	0.33	3.00
7216	16	12.00	8.00	2.000	1.600	0.750	0.39	3.00
7218	18	13.50	9.00	2.250	1.800	0.875	0.45	3.50
7220	20	15.00	10.00	2.500	2.000	1.000	0.52	4.00
7236	36	27.00	18.00	4.500	3.600	2.500	0.89	7.00

BROWN & SHARPE TAPER								
Model	Taper	P	B	C/A	D	·T	H	L
7405	5	3.13	2.00	0.533	0.450	0.250	0.14	0.94
7406	6	3.63	2.38	0.599	0.500	0.250	0.14	0.94
7407	7	4.38	2.88	0.720	0.600	0.375	0.20	1.13
7408	8	5.44	3.56	0.898	0.750	0.500	0.27	1.37
7409	9	6.50	4.25	1.078	0.901	0.500	0.27	2.00
7410	10	7.88	5.00	1.260	1.045	0.500	0.27	2.25
7400	★10	8.56	5.69	1.289	1.045	0.500	0.27	2.25
7411	11	9.31	5.94	1.498	1.250	0.625	0.33	2.50
7401	★11	10.13	6.75	1.531	1.250	0.625	0.33	2.50
7412	12	11.13	7.13	1.797	1.500	0.625	0.39	3.25
7413	13	11.75	7.75	2.073	1.750	0.875	0.45	3.50
7415	15	13.50	8.75	2.615	2.250	1.000	0.52	4.00
7417	17	14.50	9.75	3.156	2.750	1.500	0.77	4.00
7418	18	15.00	10.25	3.427	3.000	1.500	0.77	4.50

★ Carbide diameter    ★ CINN. Grinder

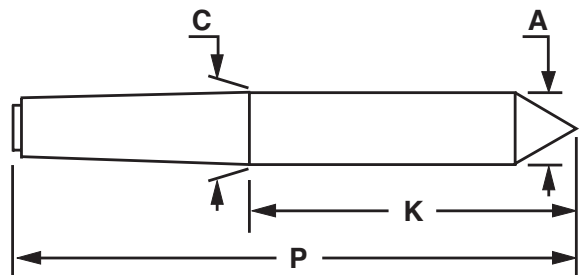
# Long Series Dead Centers

MORSE TAPER				
Model	Taper	P	K	C/A
64502	2	5.19	2.63	0.700
64602	2	6.78	4.22	0.700
64503	3	6.25	3.06	0.938
64603	3	6.75	3.56	0.938
64504	4	7.75	3.69	1.231
64604	4	8.25	4.19	1.231
64505	5	9.53	4.34	1.748
64605	5	10.00	4.81	1.748
64506	6	12.50	5.25	2.494
64606	6	13.00	5.75	2.494

JARNO TAPER				
Model	Taper	P	K	C/A
64510	10	8.50	3.50	1.250
64610	10	9.25	4.25	1.250
64514	14	11.50	4.50	1.750
64614	14	12.00	5.00	1.750

BROWN & SHARPE				
Model	Taper	P	K	C/A
64407	7	5.25	2.37	0.720
64412	12	12.25	5.12	1.797

METRIC TAPER					
Model	Metric Size	Rate of Taper	P	K	C/A
70080	80	1:20	12.50	4.78	3.150
70100	100	1:20	14.50	5.37	3.937
70081	80	1:10	12.38	4.76	3.150
70101	100	1:10	14.50	5.33	3.937



Drawing shows Long Series and Metric Taper dimensions only.