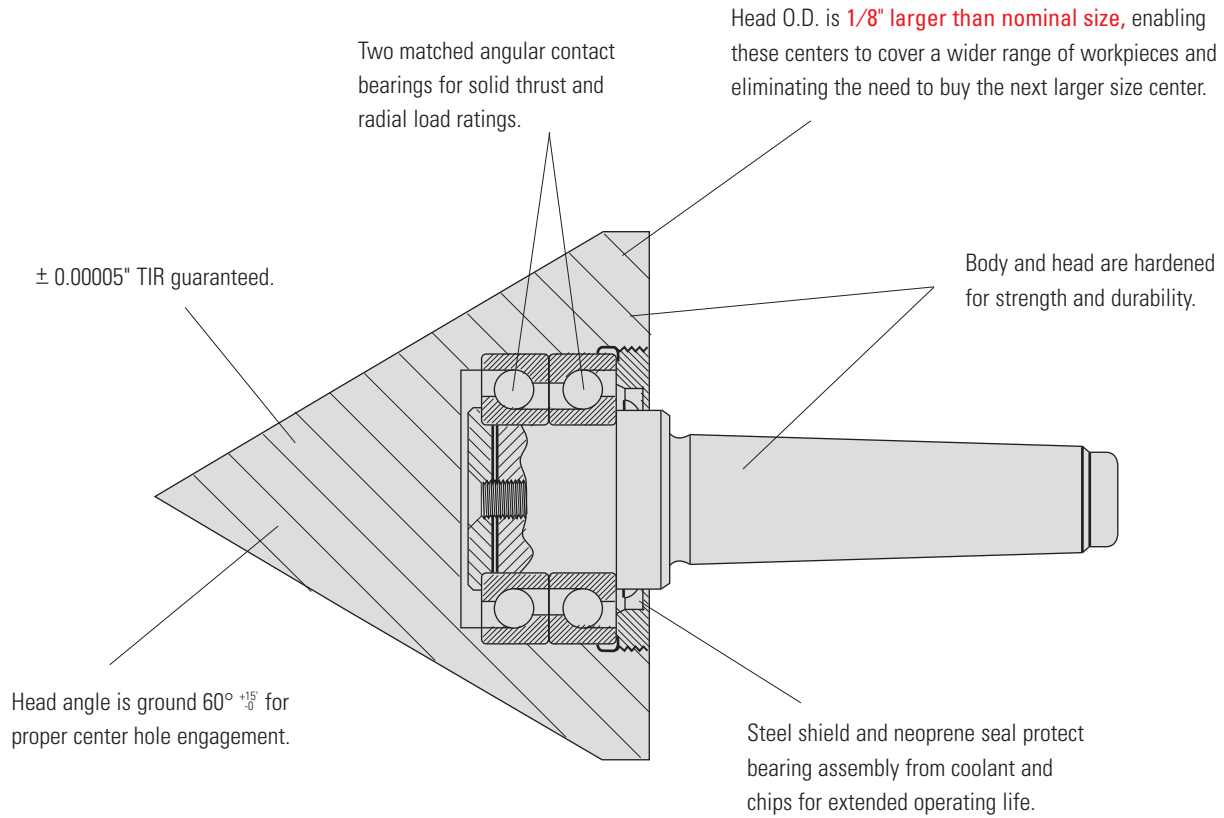




# ROYAL PIPE HEAD LIVE CENTERS

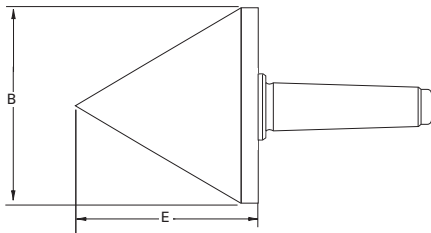
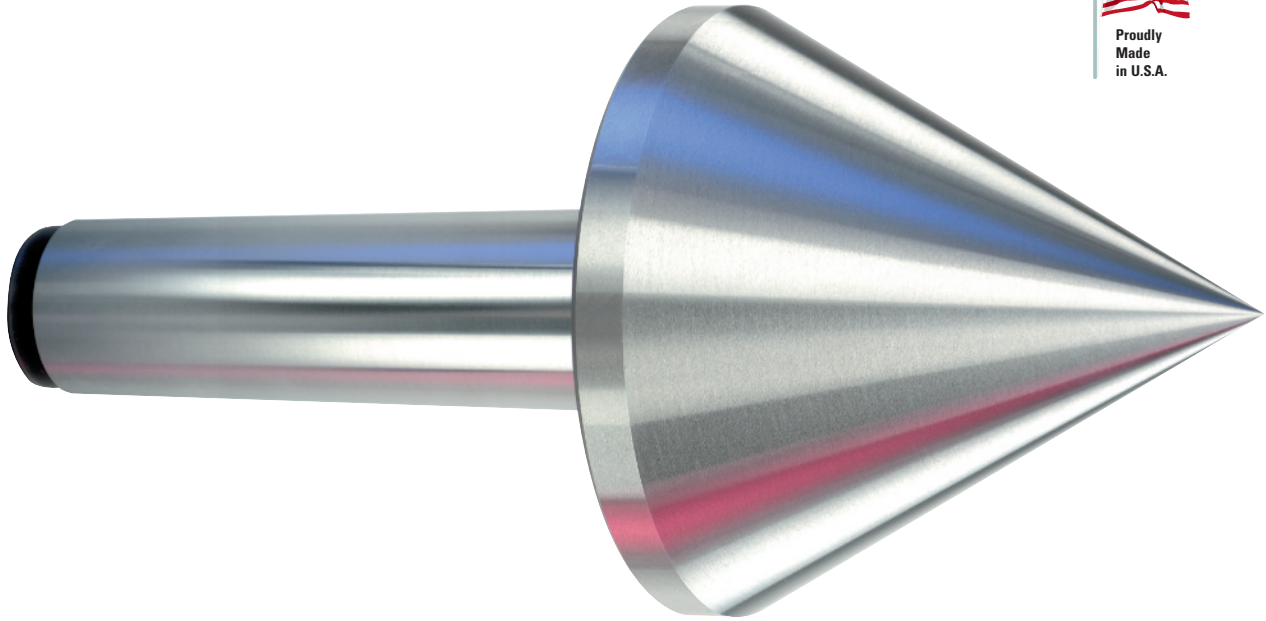


- Designed for turning **pipes, tubes, and parts with extra-large center holes.**
- Two matched angular contact bearings provide good thrust and radial load ratings.
- Head diameter is 1/8" over nominal size, enabling these centers to cover a wider range of workpieces.



**Check out the Royal Live Center Video at [www.livecenters.com](http://www.livecenters.com)**

# ROYAL PIPE HEAD LIVE CENTERS



## Royal Pipe Head Live Centers

TAPER	B	E	MAX. SUGGESTED RPM*	WEIGHT OF WORKPIECE (lbs.)	THRUST LOAD (lbs.)	PART NUMBER	PRICE
2 MT	3.15	3.39	5,000	475	1,780	10701	<b>\$781</b>
3 MT	3.15	3.39	5,000	475	1,780	10702	<b>781</b>
4 MT	4.15	4.10	4,500	630	2,550	10704	<b>885</b>
5 MT	4.15	4.10	4,500	630	2,550	10705	<b>885</b>
4 MT	5.15	4.90	4,000	845	3,450	10706	<b>1,092</b>
5 MT	5.15	4.90	4,000	845	3,450	10707	<b>1,092</b>

\* Maximum recommended operating limit. Operating above this speed could result in heat build-up and accelerated bearing wear.