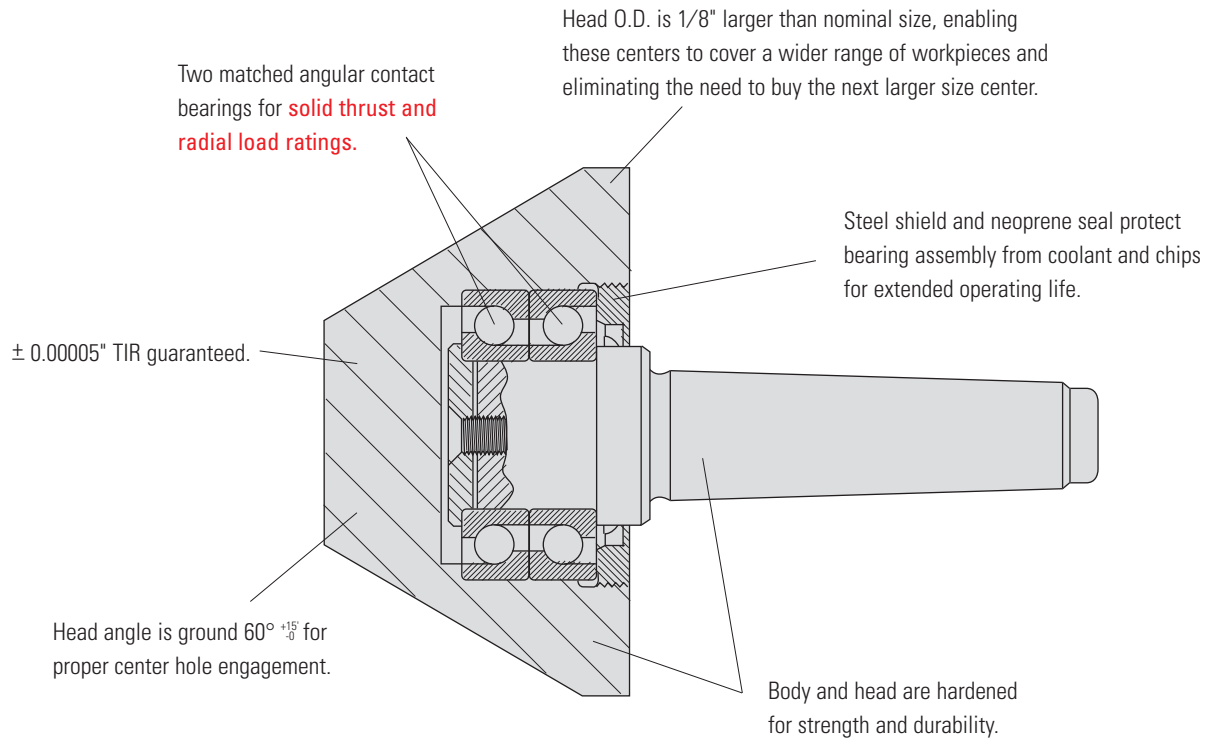


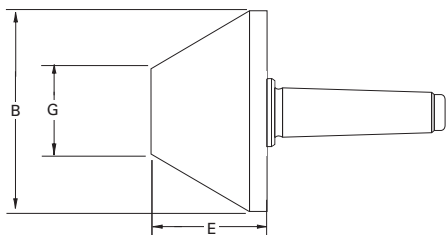
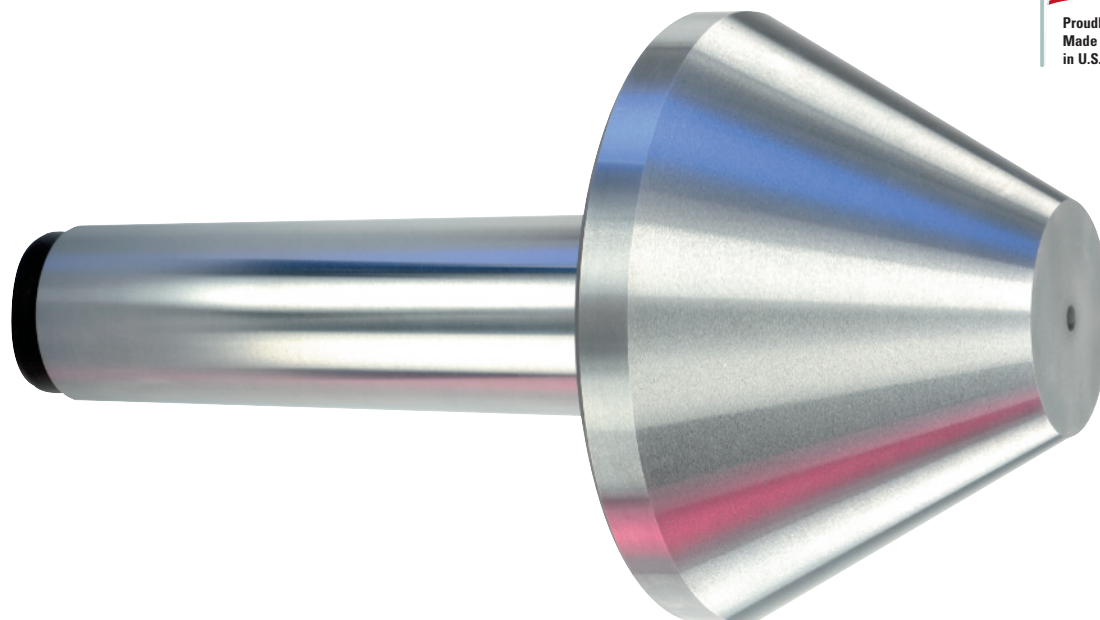


## ROYAL STANDARD BULL HEAD LIVE CENTERS



- ❑ Designed for turning pipes, tubes, and parts with extra-large center holes.
- ❑ Two matched angular contact bearings provide good thrust and radial load ratings.
- ❑ Head diameter is 1/8" over nominal size, enabling these centers to cover a wider range of workpieces.
- ❑ Bull Head design is shorter than a pipe head, reducing potential interference in blind center hole applications and ensuring that the **load is positioned over the bearings for optimum strength**.
- ❑ Extra large capacity models also available. See previous page.

# ROYAL STANDARD BULL HEAD LIVE CENTERS



## Royal Standard Bull Head Live Centers

TAPER	B	E	G	MAX. SUGGESTED RPM*	WEIGHT OF WORKPIECE (lbs.)	THRUST LOAD (lbs.)	PART NUMBER	PRICE
3 MT	3.15	2.52	1.00	5,000	615	1,780	10902	<b>\$767</b>
3 MT	4.15	3.01	1.25	4,500	860	2,550	10903	<b>950</b>
4 MT	4.15	3.01	1.25	4,500	860	2,550	10904	<b>950</b>
5 MT	4.15	3.01	1.25	4,500	860	2,550	10905	<b>950</b>
4 MT	5.15	3.17	2.00	4,000	1,145	3,450	10906	<b>1,185</b>
5 MT	5.15	3.17	2.00	4,000	1,145	3,450	10907	<b>1,185</b>
5 MT	6.15	3.60	2.50	3,500	1,450	4,500	10909	<b>1,637</b>
6 MT	6.15	3.60	2.50	3,500	1,450	4,500	10910	<b>1,637</b>

\* Maximum recommended operating limit. Operating above this speed could result in heat build-up and accelerated bearing wear.