

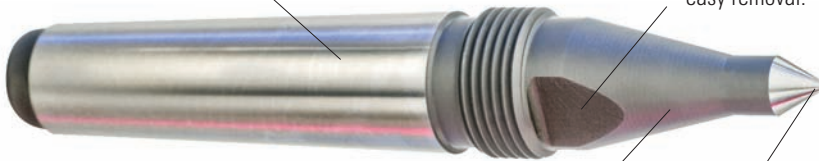


ROYAL CNC THREADED DEAD CENTERS

Great For Live Tailstocks and Precision Grinding

4140 steel hardened and ground to Rc 61-63 for long life.

Wrench flats for easy removal.



Extended length provides great tool clearance. Taper maintains strength and rigidity.

All points are ground to an angle of $60^{\circ} \begin{smallmatrix} +15^{\circ} \\ -0 \end{smallmatrix}$ and guaranteed to $\pm 0.00005''$ TIR.



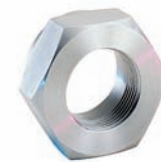
Carbide blank is brazed into a close-tolerance socket for maximum strength and rigidity.



Extended length for optimum tool clearance.

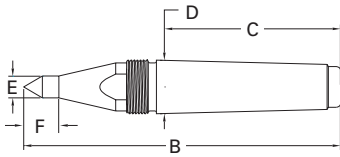
Full diameter point covers a wide range of center holes.

- ❑ Royal threaded dead centers are designed for use in CNC turning centers with **live tailstocks**.
- ❑ These dead centers are also widely used in precision grinding applications.
- ❑ Available in several styles to suit a wide range of applications.
 - CNC Point
 - Carbide-Tipped CNC Point
 - Full Diameter Extended Point
- ❑ Longer than normal gage length on all models provides outstanding clearance.
- ❑ Extraction nut and wrench flats enable easy removal from tailstock/spindle.



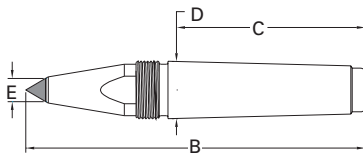
Extraction nut allows for easy removal from spindle. Order separately.

ROYAL CNC THREADED DEAD CENTERS



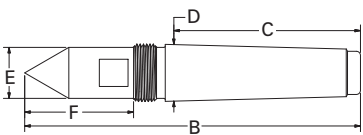
Royal CNC Threaded Dead Centers

TAPER A	B	C	D	E	F	THREAD	DEAD CENTER		EXTRACTION NUT	
							PART NUMBER	PRICE	PART NUMBER	PRICE
3 MT	5.94	3.19	0.938	0.38	0.63	1"-14	11530	\$197	11550	\$49
3 MT	5.94	3.19	0.938	0.50	0.81	1"-14	11533	197	11550	49
4 MT	7.31	4.06	1.231	0.50	0.81	1 1/4"-14	11531	240	11551	58
4 MT	7.31	4.06	1.231	0.75	1.18	1 1/4"-14	11535	240	11551	58
5 MT	8.44	5.19	1.748	0.50	0.81	1 3/4"-12	11532	342	11552	65
5 MT	8.44	5.19	1.748	0.75	1.18	1 3/4"-12	11537	342	11552	65
5 MT	8.44	5.19	1.748	1.00	1.50	1 3/4"-12	11538	342	11552	65



Royal CNC Threaded Dead Centers with Carbide-Tipped Point

TAPER A	B	C	D	E	THREAD	DEAD CENTER		EXTRACTION NUT	
						PART NUMBER	PRICE	PART NUMBER	PRICE
3 MT	5.94	3.19	0.938	0.38	1"-14	11540	\$269	11550	\$49
4 MT	7.31	4.06	1.231	0.50	1 1/4"-14	11541	323	11551	58
5 MT	8.44	5.19	1.748	0.50	1 3/4"-12	11542	415	11552	65



Royal Full Diameter Extended Point Threaded Dead Centers

TAPER A	B	C	D	E	F	THREAD	DEAD CENTER		EXTRACTION NUT	
							PART NUMBER	PRICE	PART NUMBER	PRICE
3 MT	5.94	3.19	0.938	0.86	1.88	1"-14	11534	\$197	11550	\$49
4 MT	7.31	4.06	1.231	1.11	2.37	1 1/4"-14	11536	240	11551	58
5 MT	8.44	5.19	1.748	1.25	2.36	1 3/4"-12	11539	342	11552	65