

ROYAL GRIPPEX 20L COOLANT-ACTUATED BAR PULLERS — Automate Any CNC Lathe



Can be operated by either coolant or compressed air.

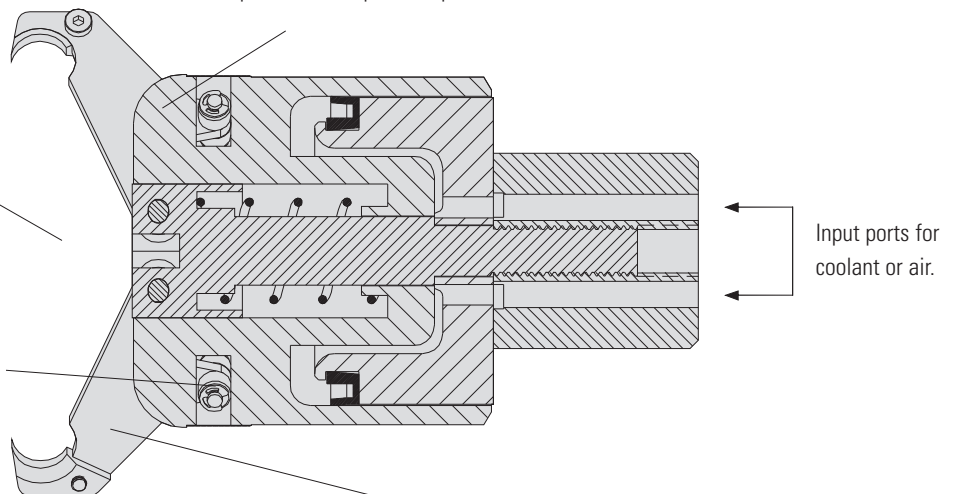
- The patented Grippex 20L CNC bar puller is actuated by a CNC lathe's coolant system. As coolant is fed through the unit, it pushes a piston forward which causes the fingers to close around the bar stock. When the coolant is turned off, the fingers automatically spring open.
- Self-adjusting mechanism — fingers will close down until they contact the bar stock so no presetting is necessary. This feature allows the Grippex to **make multiple pulls on the same workpiece**, even after the OD has been turned.
- Unit can also be operated by air pressure.
- When fitted with robot gripper jaws, the Grippex can:
 - Remove a bar remnant from a bar-fed lathe and drop it into the parts catcher. This eliminates the risk of the remnant falling into the chip conveyor where it can become jammed and cause damage.
 - Remove a finished workpiece from a sub-spindle and place it into the parts catcher. This eliminates the need for unreliable ejectors and also **allows the sub-spindle to swallow longer parts**.

The Grippex has a wide gripping range of 1/8" – 3 1/8". Higher capacity gripping fingers are also available.

Very high gripping force and smooth operation is achieved through a **patented finger mechanism** that pivots on two roller bearings. As little as 15 psi of coolant pressure is enough to enable the Grippex to pull a 210 lb. bar!

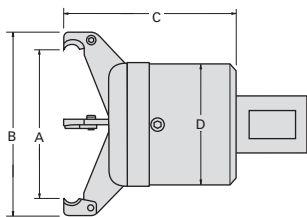
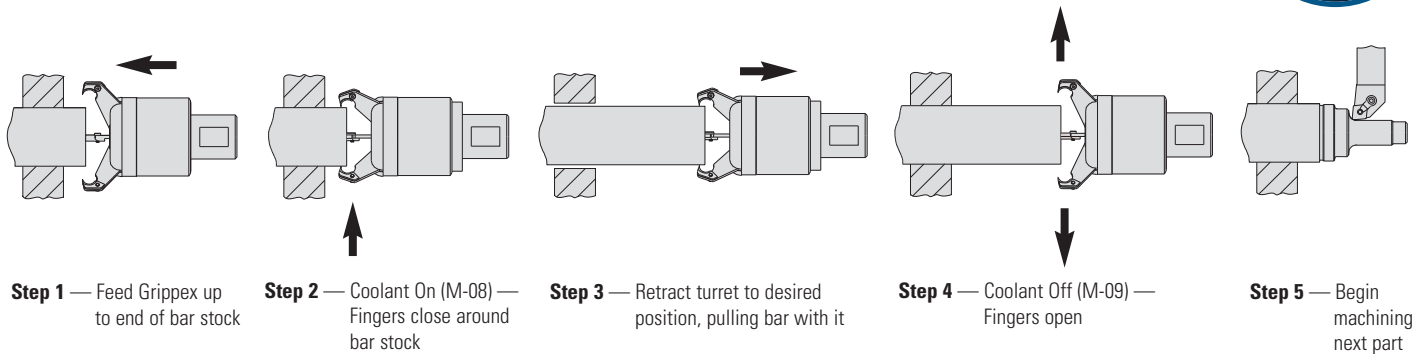
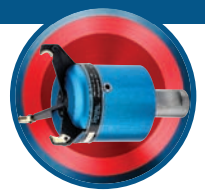
Hardened finger inserts reduce wear and help the Grippex penetrate hard materials like stainless steel.

Thick-walled heavy-duty construction helps to protect unit and allows it to be used at coolant pressures of up to 280 psi.



Three-finger design is superior for gripping both round and hex stock. Special two-finger model also available. Contact Royal for information.

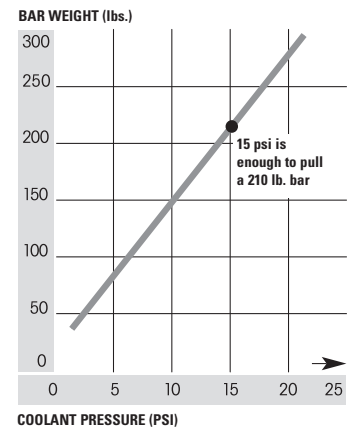
ROYAL GRIPPEX 20L COOLANT-ACTUATED BAR PULLERS — Automate Any CNC Lathe



20L Clearance Dimensions

GRIPPING RANGE	FINGER PART NUMBER	A	B	C	D
1/8" - 2 3/8"	43170	2 3/8"	3 1/4"	3 1/2"	2 11/16"
1/8" - 3 1/8"	43175	3 1/8"	4"	3 11/16"	2 11/16"
5/16" - 4 1/8"	43180	4 1/8"	5 1/16"	4 1/4"	2 11/16"

Grippex 20L Pulling Force Graph



Royal Grippex 20L Bar Pullers



SHANK	PART NUMBER	PRICE*
1" Round	43140	\$1,492
1 1/4" Round	43145	1,492
1 1/2" Round	43150	1,492

*Includes one set of standard fingers (3 3/8" cap), and one set of inserts.



Replacement Finger Sets

CAPACITY	PART NUMBER	PRICE/SET
1/8" - 2 3/8"	43170	\$166
1/8" - 3 1/8" (Std.)	43175	181
5/16" - 4 1/8"	43180	339

Contact us if you need fingers for an older model Grippex unit.



Replacement Insert Sets

DESCRIPTION	PART NUMBER	PRICE/SET
20L Insert Set	43185	\$122

Coolant Adapter

Provides an easy method for feeding coolant or air to unit. Not necessary for most applications.



DESCRIPTION	PART NUMBER	PRICE/SET
Coolant Adapter	43190	\$122



Robot Gripper Jaw Sets

For removing finished parts from a subspindle or removing bar remnants from main spindle.

DESCRIPTION	PART NUMBER	PRICE/SET
20L Robot Gripper Jaw Set	43106	\$214

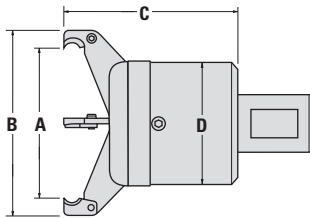


ROYAL GRIPPEX 20S COOLANT-ACTUATED BAR PULLERS — Automate Any CNC Lathe

- Same great features as Model 20L featured on previous pages.
- **Smaller body diameter** enables 20S units to be used on machines with less tool clearance and smaller turrets.
- Gripping force for 20S is quite high, but not as high as the 20L models (see chart).
- 140 psi maximum coolant pressure.



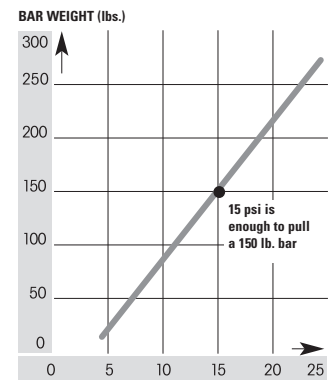
U.S. Patent
#6,530,578



20S Clearance Dimensions

GRIPPING RANGE	A	B	C	D
1/8" - 2 1/16"	2 1/16"	2 15/16"	3 3/8"	2 3/8"

Grippex 20S Pulling Force Graph



COOLANT PRESSURE (PSI)



Royal Grippex 20S Bar Pullers

SHANK	PART NUMBER	PRICE
1"	43340	\$1,390
1 1/4"	43345	1,390



Grippex 20S Replacement Finger Sets

CAPACITY	PART NUMBER	PRICE/SET
1/8" - 2 1/16"	43339	\$166

Coolant Adapter

Provides an easy method for feeding coolant or air to unit. Not necessary for most applications.



DESCRIPTION	PART NUMBER	PRICE/SET
Coolant Adapter	43190	\$122



Grippex 20S Replacement Insert Sets

CAPACITY	PART NUMBER	PRICE/SET
20S Insert Set	43185	\$122