



ALBRECHT PRECISION DRILL CHUCKS

**THE WORLD'S MOST CONSISTENTLY
ACCURATE DRILL CHUCKS**



ALBRECHT

The World's Most Consistently Accurate Drill Chucks

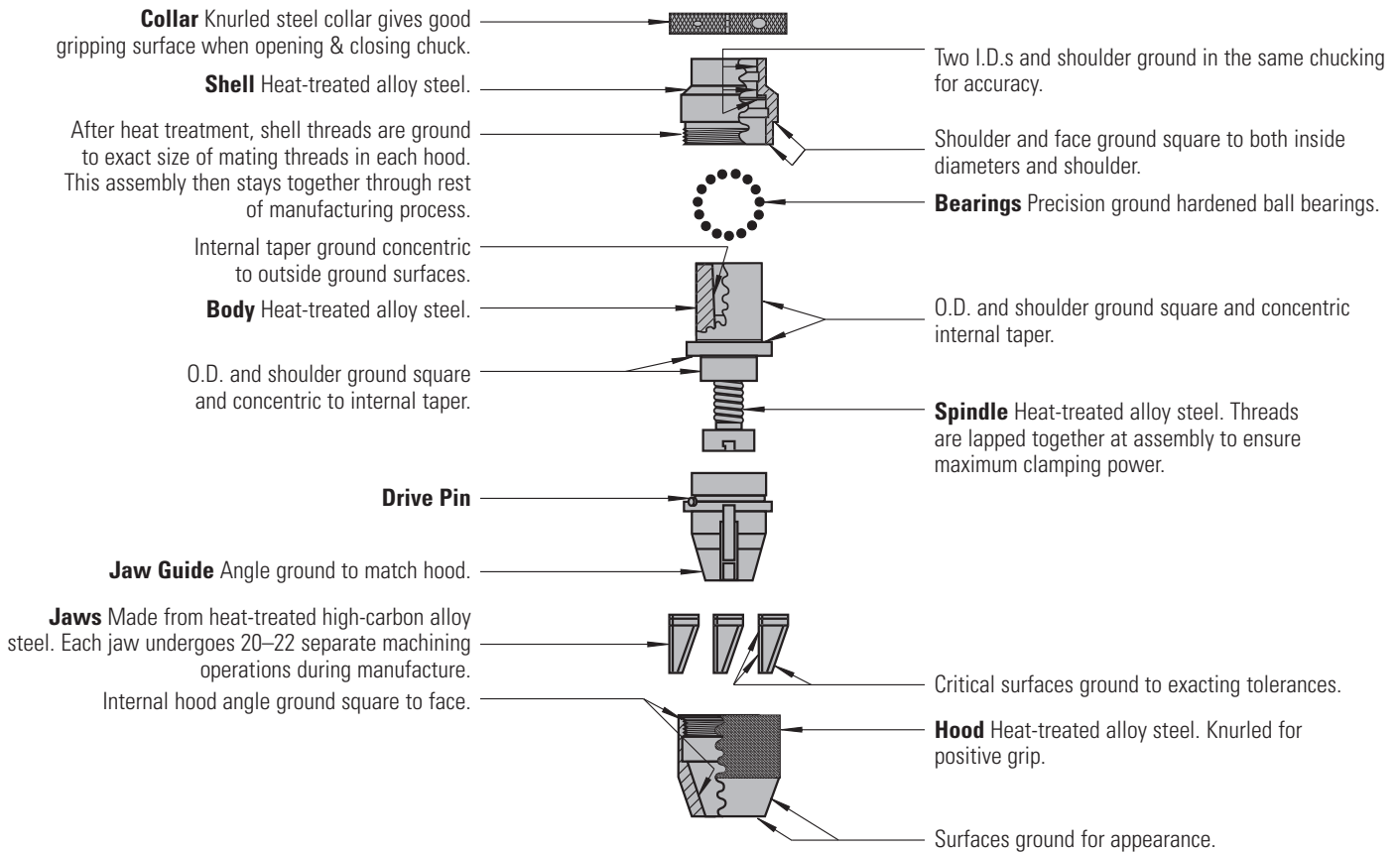


For the past 100 years, Albrecht's line of precision drill chucks has consistently earned the highest praise for **outstanding quality and accuracy**.

At the Albrecht factory, located outside of Stuttgart, Germany, in-process air gages and custom test fixtures are used to inspect all components throughout each step of the manufacturing process. Upon assembly, each chuck is qualified with 4–6 different diameter test pins at two distinct locations on each pin, and then a quality control inspector repeats the process with 4–6 different pins before approving the chuck for packaging.

Drill chuck accuracy is critical to producing accurate hole sizing and promoting longer drill life. In today's competitive environment of short lead times and slim margins, a few scrapped parts can quickly kill a job's profits. Can you afford to take a chance on anything less than an Albrecht?

WHAT DOES IT TAKE TO MAKE A CLASSIC?



ALBRECHT SELF-TIGHTENING DESIGN



The more torque that is applied to the chuck, the tighter it grips!

All Albrecht Precision Drill Chucks, except for the Key-Lock models, incorporate a unique self-tightening feature that causes them to **grip drills tighter** as more torque is applied.

This self-tightening advantage, combined with the fact that keyless chucks are easily opened by hand, is causing many industries to abandon key-type drill chucks altogether.

ALBRECHT DIAMOND-IMPREGNATED JAWS



**FOR CARBIDE
AND HARDENED-
SHANK DRILLS**

Albrecht's patented diamond-impregnated jaws eliminate the problems of drill slippage and jaw damage that often occur when using carbide or hardened-shank drills.

Because the diamond particles embedded in the jaws are harder than the drill shanks they are gripping, they are **able to penetrate for a deep, no-slip bite.**

ALBRECHT CNC DRILL CHUCKS Excellent for CNC Machining Centers

Royal offers two Albrecht drill chuck models designed specifically for CNC machining centers:



KEY-LOCK



WRENCH-LOCK

CNC Drill Chuck Advantages

Although some manufacturers use collet chucks or toolholders for holding drills, often an Albrecht CNC Drill Chuck would be a better choice.

- A drill chuck can hold any size drill shank within its range. This is important because many tap drills have odd-sized shanks that are not compatible with conventional toolholders and collets.
- As the jaws of a drill chuck close, they always remain parallel to centerline. This results in **uniform gripping force and maximum accuracy**, regardless of the drill shank diameter.

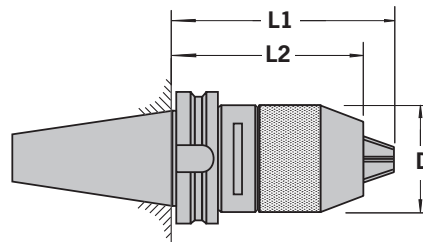
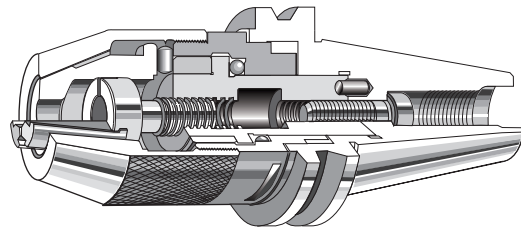
For Best Performance, Equip Your Machining Centers with Albrecht CNC Drill Chucks from Royal!



ALBRECHT WRENCH-LOCK PRECISION CNC DRILL CHUCKS



- Internal construction is very similar to Albrecht Classic Drill Chucks.
- Integral CAT and BT shanks make these chucks **shorter and more rigid** than a chuck/arbor combination, resulting in:
 - Greater accuracy
 - Greater rigidity
 - Larger work envelope
- Integral shank eliminates the possibility of a chuck slipping on its arbor.
- Chuck can be easily tightened and opened by hand.
- Extra tightening force can be achieved by using a spanner wrench (included), although this chuck also incorporates the same self-tightening feature as the Classic models (See Page 123).



Albrecht Wrench-Lock Precision CNC Drill Chucks

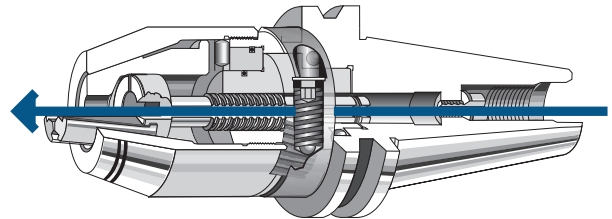
CHUCK MODEL	CAPACITY		SHANK TYPE	D	L1	L2	THREAD	MAXIMUM RPM	WEIGHT (lbs.)	PART NUMBER	PRICE
	(inches)	(millimeters)									
WL130-CAT40	1/32 - 1/2	1-13	CAT 40	2"	3 15/16"	4 7/16"	5/8-1	6,500	4.6	77100	\$568
WL160-CAT40	1/16 - 5/8	1.5-16	CAT 40	2 1/4"	4 1/32"	4 5/8"	5/8-11	6,500	5.1	77110	640
WL160-CAT50	1/16 - 5/8	1.5-16	CAT 50	2 1/4"	4 1/32"	4 5/8"	1-8	6,500	6.2	77120	745
WL130-BT40	1/32 - 1/2	1-13	BT40	2"	3 3/8"	4 3/32"	M16	6,500	4.2	77160	568

ALBRECHT KEY-LOCK PRECISION CNC DRILL CHUCKS

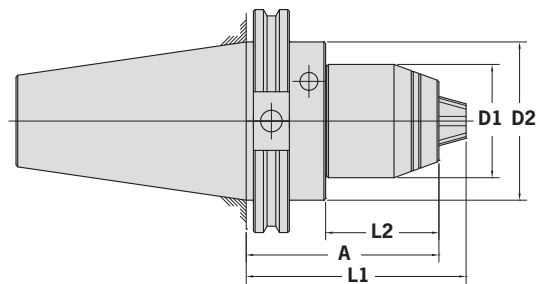
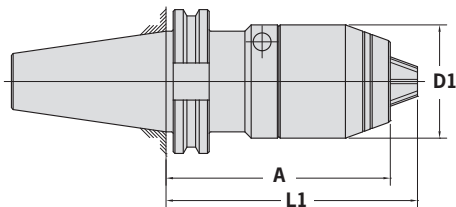


- New, compact design provides **increased capacity and better clearance**.
- Extremely accurate – Albrecht Key-Lock Drill Chucks are the most accurate drill chucks available.
- Unique worm/gear arrangement transmits extremely high gripping force to the jaws.
- Short length and integral shank provide **exceptional rigidity**.
- Thru-coolant feature is standard on all Albrecht Key-Lock Drill Chucks.
- Non-rotating hood – chuck is opened and closed via a hex key inserted into the side of the body.
- Balanced for use on all CNC machines up to 7000 rpm (75408 balanced to 18,000 rpm).
- Can be operated in both clockwise and counterclockwise directions.

Thru-coolant feature is standard on all Key-Lock chucks.



The key-operated worm and gear assembly generates **very high grip force** and ensures that the chuck can't loosen during operation because a worm can drive a gear, but a gear cannot drive a worm.



Albrecht Key-Lock Precision CNC Drill Chucks

CHUCK MODEL	CAPACITY		TAPER	A	L1	L2	D1	D2	PART NUMBER	PRICE
	(inches)	(millimeters)								
KL100-CAT40	1/64 – 3/8	0.5 – 10	CAT 40	2.72	3.39	1.48	1.50	1.75	75402	\$647
KL160-HSK 63 Form A	1/32 – 5/8	1 – 16	HSK 63 Form A	3.86	4.33	–	1.97	–	75403	655
KL160-HSK 63 Form F	1/32 – 5/8	1 – 16	HSK 63 Form F	3.86	4.33	–	1.97	–	75408	788
KL160-CAT40	1/32 – 5/8	1 – 16	CAT 40	3.90	4.37	–	1.97	–	75404	592
KL160-CAT50	1/32 – 5/8	1 – 16	CAT 50	3.31	3.78	1.93	1.97	2.76	75406	796

Note – Other tapers available. Please contact Royal at 1-800-645-4174.



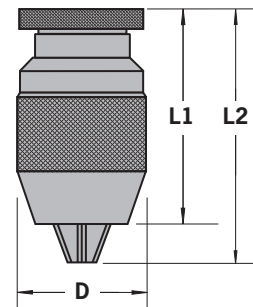
ALBRECHT CLASSIC PRECISION KEYLESS DRILL CHUCKS

The World's Most Consistently Accurate Drill Chucks

- ❑ Available in the following styles:
 - Standard
 - Thru-Hole
 - Diamond-Coated Jaws
 - Stainless Steel
- ❑ Keyless operation.
- ❑ Self-tightening design (See Page 123).
- ❑ Balanced.
- ❑ Thru-hole models enable the use of longer drills.
- ❑ Stainless steel models with threaded mount for corrosive applications such as EDM. Stainless models equipped with thru-holes.
- ❑ Models with diamond-coated jaws **effectively grip carbide-shank drills** (See Page 123).
- ❑ Threaded-mount models available upon request.

Dimensions

CHUCK MODEL	D	L1	L2
15	0.75	1.38	1.50
30	1.00	1.75	1.88
50	1.19	2.25	2.44
65	1.38	2.44	2.69
100	1.69	3.13	3.63
130	2.00	3.56	4.06
160	2.25	3.75	4.31



Albrecht Classic Precision Keyless Drill Chucks

CHUCK MODEL	CAPACITY		CHUCK MOUNT	MAXIMUM RPM	WEIGHT (lbs.)	PART NUMBER	PRICE
	(inches)	(millimeters)					
15-J0	0* - 1/16	0* - 1.5	J0	50,000	0.1	70010	\$466
30-J0	0* - 1/8	0* - 3	J0	35,000	0.2	70020	351
30-J1	0* - 1/8	0* - 3	J1	35,000	0.2	70030	351
65-J1	0* - 1/4	0* - 6.5	J1	20,000	0.7	70050	336
100-J33	0* - 3/8	0* - 10	J33	12,000	1.4	70070	364
100-J2	0* - 3/8	0* - 10	J2	12,000	1.4	70080	364
130-J33	1/32* - 1/2	1* - 13	J33	7,000	2.1	70090	398
130-J2	1/32* - 1/2	1* - 13	J2	7,000	2.1	70100	398
130-J6	1/32* - 1/2	1* - 13	J6	7,000	2.1	70110	398
160-J6	1/32* - 5/8	1* - 16	J6	4,000	2.8	70120	449

* The inherent design characteristics of a keyless drill chuck may prevent the jaws from closing down to absolute zero. Albrecht guarantees a minimum gripping diameter of 0.008" for model 15 Keyless Drill Chucks, and 0.015" for Models 30 – 100 Keyless Drill Chucks. If you need to grip a smaller diameter, please contact us at 1-800-645-4174.

ALBRECHT CLASSIC PRECISION KEYLESS DRILL CHUCKS



Albrecht Classic Precision Keyless Drill Chucks with Thru-Hole

CHUCK MODEL	CAPACITY		THRU-HOLE DIA.		CHUCK MOUNT	MAXIMUM RPM	WEIGHT (lbs.)	PART NUMBER	PRICE
	(inches)	(millimeters)	(inches)	(millimeters)					
15-J0	0* - 1/16	0* - 1.5	1/16	1.8	J0	50,000	0.1	73500	\$470
30-J0	0* - 1/8	0* - 3	1/8	3	J0	35,000	0.2	73510	341
30-J1	0* - 1/8	0* - 3	1/8	3	J1	35,000	0.2	73520	341



**FOR CARBIDE
AND HARDENED-
SHANK DRILLS**

Albrecht Classic Precision Keyless Drill Chucks with Diamond Jaws

CHUCK MODEL	CAPACITY		CHUCK MOUNT	MAXIMUM RPM	WEIGHT (lbs.)	PART NUMBER	PRICE
	(inches)	(millimeters)					
130-J33	1/32 - 1/2	1-13	J33	7,000	2.1	70290	\$582
130-J6	1/32 - 1/2	1-13	J6	7,000	2.1	70300	582



Albrecht Stainless Steel Classic Keyless Drill Chucks

CHUCK MODEL	CAPACITY		THRU-HOLE DIA.		CHUCK MOUNT	MAXIMUM RPM	WEIGHT (lbs.)	PART NUMBER	PRICE
	(inches)	(millimeters)	(inches)	(millimeters)					
30-3/8	0* - 1/8	0* - 3	1/8	3	3/8 - 24	7,500	0.3	73700	\$552
50-3/8	1/32 - 1/4	0.6 - 7.4	5/32	4	3/8 - 24	5,000	0.5	73710	592

Note - These stainless steel chucks are for industrial use only. Special chucks available for medical/surgical applications. Please contact us at 1-800-645-4174.

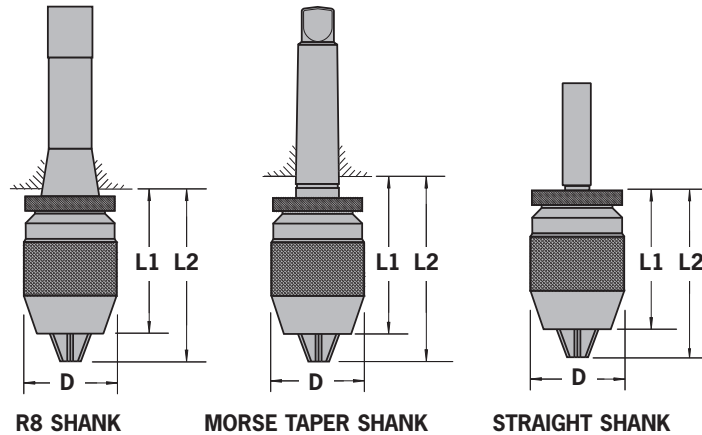


ALBRECHT CLASSIC-PLUS PRECISION DRILL CHUCKS WITH INTEGRAL SHANK

- ❑ Integral shank design is more compact than a combined drill chuck and arbor, resulting in:
 - Greater accuracy
 - Greater rigidity
 - Larger work envelope
- ❑ Integral shank eliminates the possibility of a chuck slipping on its arbor.
- ❑ This unit is often **less expensive than a separate chuck and arbor.**
- ❑ Keyless operation.
- ❑ Self-tightening design (See Page 123).
- ❑ Balanced.
- ❑ Available with standard or diamond-coated jaws (See Page 123).

CHUCK MODEL	D	L1	L2
130-2MT	2"	3 ³ / ₈ "	3 ⁷ / ₈ "
130-3MT	2"	3 ³ / ₈ "	3 ⁷ / ₈ "
130-4MT	2"	3 ¹ / ₈ "	3 ¹ / ₂ "
130-R8	2"	3 ⁵ / ₈ "	3 ¹ / ₂ "
130-5/8	2"	3 ³ / ₈ "	3 ⁷ / ₈ "

CHUCK MODEL	D	L1	L2
160-2MT	2 ¹ / ₄ "	3 ¹ / ₂ "	4 ¹ / ₈ "
160-3MT	2 ¹ / ₄ "	3 ¹ / ₂ "	4 ¹ / ₈ "
160-4MT	2 ¹ / ₄ "	3 ³ / ₈ "	4 ¹ / ₈ "
160-R8	2 ¹ / ₄ "	3 ¹ / ₈ "	3 ¹ / ₂ "



Albrecht Classic-Plus Precision Keyless Drill Chucks with Integral Shank

CHUCK MODEL	CAPACITY		SHANK TYPE	MAXIMUM RPM	WEIGHT (lbs.)	PART NUMBER	PRICE
	(inches)	(millimeters)					
CP130-2MT	1/32 - 1/2	1-13	2MT	7,000	2.3	73010	\$442
CP130-3MT	1/32 - 1/2	1-13	3MT	7,000	2.6	73020	444
CP130-4MT	1/32 - 1/2	1-13	4MT	7,000	3.3	73030	469
CP130-R8	1/32 - 1/2	1-13	R8	7,000	2.6	73040	486
CP130-5/8	1/32 - 1/2	1-13	5/8"SS	7,000	2.2	73050	440
CP160-2MT	1/8 - 5/8	3-16	2MT	4,000	2.9	73060	490
CP160-3MT	1/8 - 5/8	3-16	3MT	4,000	3.3	73070	494
CP160-4MT	1/8 - 5/8	3-16	4MT	4,000	4.0	73080	519
CP160-R8	1/8 - 5/8	3-16	R8	4,000	4.2	73090	534



FOR CARBIDE AND HARDENED-SHANK DRILLS

Albrecht Classic-Plus Precision Keyless Drill Chucks with Integral Shank and Diamond-Coated Jaws

CHUCK MODEL	CAPACITY		SHANK TYPE	MAXIMUM RPM	WEIGHT (lbs.)	PART NUMBER	PRICE
	(inches)	(millimeters)					
CPD130-2MT	1/32 - 1/2	1-13	2MT	7,000	2.3	73110	\$628
CPD130-3MT	1/32 - 1/2	1-13	3MT	7,000	2.6	73120	647
CPD130-4MT	1/32 - 1/2	1-13	4MT	7,000	3.3	73130	658
CPD130-R8	1/32 - 1/2	1-13	R8	7,000	2.6	73140	675
CPD130-5/8	1/32 - 1/2	1-13	5/8"SS	7,000	2.2	73150	627

ALBRECHT PRECISION ARBORS



- ❑ Manufactured from high-grade alloy steels.
- ❑ Hardened for long life.
- ❑ Ground concentric within 0.0001".
- ❑ Guarantee: If an Albrecht chuck ever slips on an Albrecht arbor, we **will repair or replace them at no charge.**



Straight Shank Arbors

SHANK DIAMETER	SHANK LENGTH	CHUCK TAPER	PART NUMBER	PRICE
3/8"	2 1/2"	J0	70580	\$47
3/8"	2 1/2"	J1	70583	49
1/2"	2 1/2"	J0	70586	47
1/2"	2 1/2"	J1	70589	49
1/2"	2 1/2"	J2	70592	60
1/2"	2 1/2"	J33	70595	77
1/2"	2 1/2"	J6	70598	83
5/8"	2 1/2"	J1	70601	50
5/8"	2 1/2"	J33	70607	77
5/8"	2 1/2"	J6	70610	83
3/4"	3"	J2	70616	63
3/4"	3"	J6	70619	85
1"	3"	J33	70625	81



R8 Taper Arbors

CHUCK MOUNT	PART NUMBER	PRICE
J1	70650	\$88
J2	70653	88
J6	70656	88
J33	70659	88

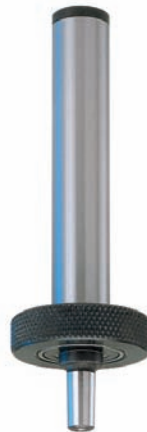
ALBRECHT ACCESSORIES

PRECISION SENSITIVE DRILL FEEDS

- ❑ Makes drilling of small holes easy by giving operator fingertip feed control independent of coarser quill feed.
- ❑ Eliminates the need for special machines to drill small holes.
- ❑ **Reduces breakage and deflection of small drills.**

Simple to use:

1. Grasp free-turning knurled ring and feed with gentle finger pressure.
2. Spring-loaded. When ring is released, chuck retracts automatically.



Note: Spring is specifically balanced for use with model 15-J0. The use of other chucks could result in decreased accuracy and performance.

SHANK	TAPER	PART NUMBER	PRICE
1 Morse Taper	J0	70670	\$413
1/2" Diameter	J0	70675	377

HEAVY-DUTY CHUCK REMOVAL TOOLS

- ❑ Tapered chuck removal tool can be used to remove the chucks from their mounts.
- ❑ Simply match the Jacobs taper on the chuck to the corresponding tool.

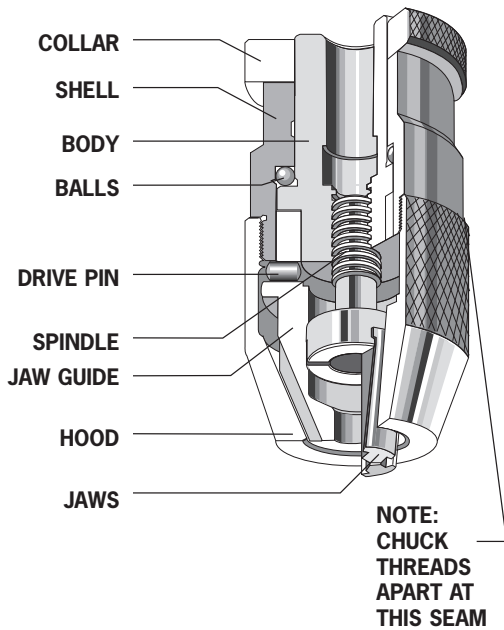
CHUCK MOUNT	PART NUMBER	PRICE
J0	70678	\$63
J1	70680	90
J2	70682	97
J33	70682	97
J6	70682	97





ALBRECHT PRECISION CHUCK REFURBISHING

Send It In or Do It Yourself



Many customers refurbish their own chucks by following these simple instructions. If you have questions regarding the refurbishing process, please call one of our applications engineers at 1-800-645-4174, or visit www.royalprod.com.

- Remove collar from chuck
- There is an invisible seam between the hood and shell. Hold chuck by the shell in a vise with soft jaws and loosen hood with a strap wrench – RH thread
- Once hood has been loosened, unscrew by hand to prevent distortion
- Slide jaws out of jaw guide and remove guide
- Remove body and spindle assembly to expose balls
- Clean all parts with a mild solvent
- Replace worn or damaged parts
- Reverse steps for assembly

Caution – do not lubricate acme thread on body/spindle assembly. Thread must be clean and dry for chuck to work correctly.

If you prefer to send your chucks back to our factory for refurbishing, please send them to the address listed in this catalog. Be sure to include your name, telephone number, and either a fax number or email address so we can send you a free, no-obligation quotation. If our technicians determine that a chuck is beyond reasonable refurbishing condition, you will be offered a brand new Albrecht chuck at a discounted price.

ALBRECHT PRECISION REPLACEMENT PARTS

Classic Precision Keyless Drill Chucks

CHUCK MODEL	BODY & SPINDLE ASSEMBLY		JAWS		HOOD		BALLS (Set)		COLLAR		SHELL		JAW GUIDE		DRIVE PIN	
	PART NUMBER	PRICE	PART NUMBER	PRICE	PART NUMBER	PRICE	PART NUMBER	PRICE	PART NUMBER	PRICE	PART NUMBER	PRICE	PART NUMBER	PRICE	PART NUMBER	PRICE
C15-J0	70796	\$75	70700	\$146	70716	\$47	70732	\$15	70748	\$57	70764	\$58	70780	\$63	71002	\$1
C30-J0	70798	60	70702	81	70718	50	70734	9	70750	25	70766	40	70782	60	71004	1
C30-J1	70800	59	70702	81	70718	50	70734	9	70750	25	70766	40	70782	60	71004	1
C50-J1	70802	61	70704	80	70720	51	70736	9	70752	25	70768	42	70784	62	71006	1
C65-J1	70804	67	70706	85	70722	50	70738	9	70754	27	70770	45	70786	66	71008	1
C80-J2	70806	79	70708	85	70724	57	70740	9	70756	27	70772	47	70788	68	71010	1
C100-J33	70808	84	70710	88	70726	64	70742	9	70758	28	70774	50	70790	70	71012	1
C100-J2	70810	84	70710	88	70726	64	70742	9	70758	28	70774	50	70790	70	71012	1
C130-J33	70812	84	70712	89	70728	84	70744	15	70760	28	70776	58	70792	74	71014	1
C130-J2	70814	84	70712	89	70728	84	70744	15	70760	28	70776	58	70792	74	71014	1
C130-J6	70816	84	70712	89	70728	84	70744	15	70760	28	70776	58	70792	74	71014	1
C160-J6	70818	95	70714	98	70730	95	70746	15	70762	32	70778	68	70794	82	71016	1

Classic-Plus Precision Drill Chucks

CHUCK MODEL	BODY & SPINDLE ASSEMBLY		JAWS		HOOD		BALLS (Set)		COLLAR		SHELL		JAW GUIDE		DRIVE PIN	
	PART NUMBER	PRICE	PART NUMBER	PRICE	PART NUMBER	PRICE	PART NUMBER	PRICE	PART NUMBER	PRICE	PART NUMBER	PRICE	PART NUMBER	PRICE	PART NUMBER	PRICE
CP130-2MT	73250	\$127	70712	\$89	70728	\$84	73220	\$15	73210	\$28	73200	\$58	70792	\$74	71014	\$1
CP130-3MT	73260	141	70712	89	70728	84	73220	15	73210	28	73200	58	70792	74	71014	1
CP130-4MT	73270	154	70712	89	70728	84	73220	15	73210	28	73200	58	70792	74	71014	1
CP130-5/8	73290	114	70712	89	70728	84	73220	15	73210	28	73200	58	70792	74	71014	1
CP130-R8	74040	163	70712	89	70728	84	73220	15	73210	28	73200	58	70792	74	71014	1
CP160-2MT	74044	112	70714	98	70730	95	70747	15	70763	30	73205	68	70794	82	71016	1
CP160-3MT	74042	141	70714	98	70730	95	70747	15	70763	30	73205	68	70794	82	71016	1
CP160-4MT	74041	156	70714	98	70730	95	70747	15	70763	30	73205	68	70794	82	71016	1
CP160-R8	74043	175	70714	98	70730	95	70747	15	70763	30	73205	68	70794	82	71016	1