

2 Ton Aluminum Racing Jack *Operating Instructions*



WARNING:

Important: read these instructions and all warnings prior to using this equipment. Understand all operating procedures, safety warnings and maintenance requirements. Failure to do so could cause an accident resulting in serious or fatal injury and/or personal property damage.

WARNING!

The use of shop equipment is subject to certain hazards that cannot be prevented by mechanical means, but only by exercise of intelligence, care, and common sense. It is therefore essential to have personnel involved in the use and operation of equipment who are careful, competent, trained, and qualified in the safe operation of this equipment and its proper use. Examples of hazards are dropping, tipping, or slipping of parts/components caused primarily by improperly securing loads, overloading, off-centered loads, use on other than hard level surfaces, and using equipment for a purpose for which it was not designed.

The owner and / or operator shall study and understand the product and safety instructions before operating this equipment. Safety information shall be emphasized and understood. If the operator is not fluent in English, the product and safety instructions shall be read to and discussed with the operator in the operator's native language by the purchaser / owner or his designee, making sure that the operator comprehends their contents. **A copy of these instructions / warnings shall be retained for future reference.**

INSPECTION

Visual inspection shall be made before each use of this equipment, checking for abnormal conditions, such as cracked welds, leaks, damaged, loose or missing parts. This equipment shall be removed immediately from service if it is believed to have been subjected to an abnormal or shock load, the equipment shall be inspected by a qualified repair facility. Owners and / or operators should be aware that repair of this equipment may require specialized knowledge and facilities. It is recommended that this equipment be inspected annually by a qualified repair facility. Defective parts, decals, safety labels or signs should be replaced with Strongarm specified parts.

WARNING!

- When using various shop equipment, basic safety precautions should always be followed.
- Keep work area clean and free from debris.
- Keep children away from work area and shop equipment. Keep hands and feet away from loading area.
- Study, understand, and follow all instructions before operating this device.
- Do not exceed rated capacity.
- Use only on a hard level surface.
- Lifting device only. Immediately after lifting, support the vehicle with appropriate means.
- Do not move or dolly the vehicle while on the jack.
- Lift only on areas of the vehicle as specified by the vehicle manufacturer.
- No alterations shall be made to this product.
- Failure to heed these warnings may result in personal injury and/or property damage.



OPERATING INSTRUCTIONS

Important

Sometimes during shipment and handling, air will get into the hydraulic system causing poor lifting performance.

Air Purge:

To purge any air from the system, fully open the release valve by turning handle counter clockwise 1-1/2 to 2 turns. Then, while holding the saddle down, operate the pump handle approximately 12 times.

Release pressure on saddle and continue to pump while closing release valve. Raise unloaded jack to maximum height and release. Jack will return to lowered position and will be ready for operation.

Checking Oil Level:

Remove inspection plate and remove rubber fill plug located on the side of the round cylinder. Lift jack so the cylinder is in the vertical position with the casters up and the front wheels down. Proper oil level should be even with the bottom of the fill hole. If low, return jack to normal position and fill with NEW clean hydraulic jack oil and recheck level.

DO NOT OVERFILL!

To Raise Jack:

1. Turn the operating handle clockwise until the release valve closes. **DO NOT OVER TIGHTEN.**
2. Place the jack directly under the object to be lifted so that the saddle makes contact with load.
3. Raise jack to required height. After lifting, use garage stands to hold load.

To Lower Jack:

1. Slowly turn the operating handle counter-clockwise. The speed of lowering is controlled by the amount the valve is opened.

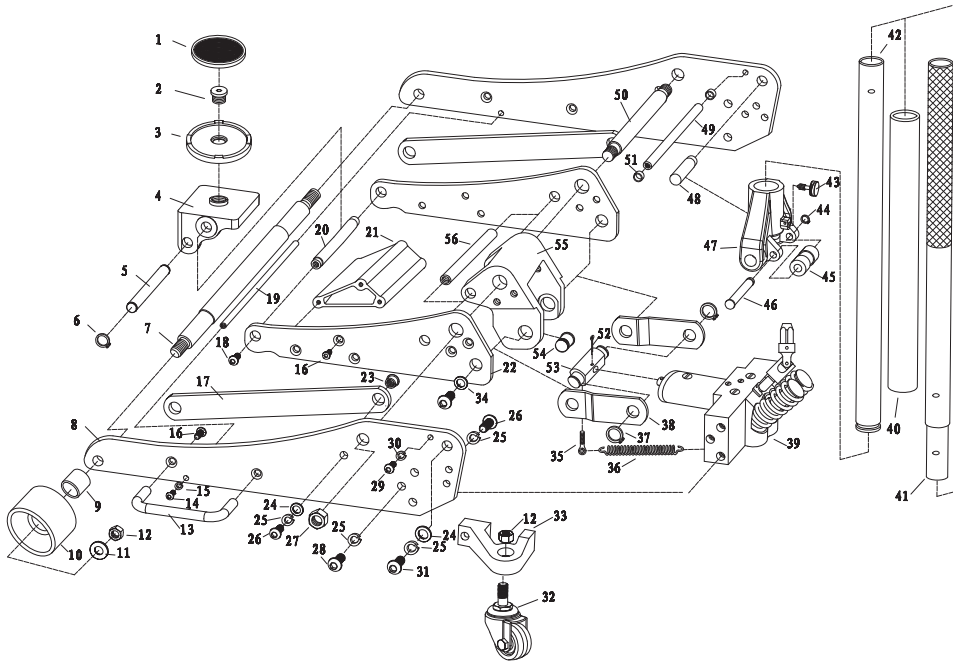
Normal Maintenance Procedures:

Always use good quality hydraulic jack oil. At no time use any other type of oil. When filling with hydraulic oil do not permit dirt or any other substance to enter the hydraulic system. Inspect the jack regularly for leaks, damaged, loose or missing parts, remove from use and have unit repaired if necessary.

Always store jack in the fully lowered position.

2 Ton Aluminum Racing Jack Parts List

PROD NO. 030412
MOD NO. 962AL



Ref.	Part Number	Description
1	PCN-962AL-01	Saddle
2	PCN-962AL-02	Saddle Set Screw
3	PCN-962AL-03	Saddle Metal Base
9	PCN-962AL-09	Wheel Bushing
10	PCN-962AL-10	Front Wheel with #11, #12
32	PCN-962AL-32	Rear Caster with #12
33	PCN-962AL-33	Rear Caster Base
36	PCN-962AL-36	Spring
39	PCN-962AL-39	Power Unit
40	PCN-962AL-40	Handle Bumper
41A	PCN-962AL-41	Handle Assembly with #42, #41
43	PCN-962AL-43	Set Screw
47	PCN-962AL-47	Handle Socket Assembly with #43, #44, #45, #46
53	PCN-962AL-53	Hydraulic Adaptor with 52

Repair Kits

PCN-962AL-HPK High Pressure Pump Kit

HPK Kit Contains: #14, 42, 15, 16, 17, 18 x 2, 19 x 2, 20, 21, 22

PCN-962AL-LPK Low Pressure Pump Kit

LPK Kit Contains: #22, 26, 27, 28 x 2, 29 x 2, 30, 33, 43, 31, 32

PCN-962AL-PRK Power Unit Repair Kit

PRK Kit Contains: #1, 3, 4, 7, 9, 10, 12, 15, 16, 18, 19, 21, 22, 23, 24, 26, 28, 29, 31, 32, 34, 35, 36, 37, 38, 39, 40, 41

PCN-962AL-H25 U-Joint Assembly with 24

