



SUPER HEAVY DUTY

**STRONGARM**<sup>®</sup>

PROD. NO. 030450  
MOD. NO. 722SHD

# Single-Stage Air Hydraulic Truck Jack *Owner's Manual*



## **WARNING:**

Read all instructions and safety warnings before operating this equipment. Failure to follow the instructions and safety warnings may result in personal injury or property damage.

M14-SA030450



## **WARNING!**

The use of shop equipment is subject to certain hazards that cannot be prevented by mechanical means, but only by exercise of intelligence, care, and common sense. It is therefore essential to have personnel involved in the use and operation of equipment who are careful, competent, trained and qualified in the safe operation of this equipment and its proper use. Examples of hazards are dropping, tipping, or slipping of parts/components caused primarily by improperly securing loads, overloading, off-centered loads, use on other than hard level surfaces, and using equipment for a purpose for which it was not designed.

The owner and / or operator shall study and understand the product and safety instructions before operating this equipment. Safety information shall be emphasized and understood. If the operator is not fluent in English, the product and safety instructions shall be read to and discussed with the operator in the operator's native language by the purchaser / owner or his designee, making sure that the operator comprehends their contents. A copy of these instructions / warnings shall be retained for future reference.



## **SAFETY WARNINGS**

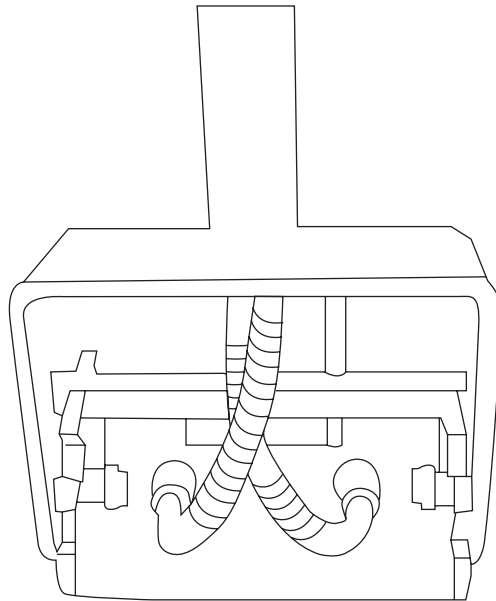
- Study, understand, and follow all instructions before operating this device.
- When using various shop equipment, basic safety precautions should always be followed.
- Keep work area clean and free from debris.
- Inspect the jack prior to each use, remove from service if it is leaking, damaged, excessively worn, or has been altered in any way.
- Keep children away from work area and shop equipment. Keep hands and feet from loading area.
- Do not exceed rated capacity.
- Use only on a hard level surface.
- Lifting device only. Immediately after lifting, support the vehicle with appropriate means.
- Lift only on areas of the vehicle as specified by the vehicle manufacturer.
- Do not move or dolly the vehicle while on the jack.
- Chock vehicle to prevent movement.
- Centre load on saddle, off centre loads may cause jack failure and / or loss of load.
- Only attachments and / or adapters supplied by the manufacturer shall be used.
- Ensure the user is familiar with the controls and operational characteristics of this product and aware of the potential hazards associated with its use.
- No alterations shall be made to this product.
- Failure to heed these instructions may result in personal injury and / or property damage.

## **INSPECTION**

Visual inspection shall be made before each use of this equipment, checking for abnormal conditions, such as cracked welds, leaks, damaged, loose or missing parts. This equipment shall be removed immediately from service if it is believed to have been subjected to an abnormal or shock load, the equipment shall be inspected by a qualified repair facility. Owners and / or operators should be aware that repair of this equipment may require specialized knowledge and facilities. It is recommended that this equipment be inspected annually by a qualified repair facility. Defective parts, decals, safety labels or signs should be replaced with Strongarm specified parts.

## **ASSEMBLY**

1. Remove jack handle from packaging.
2. Mount the handle in the upright position.
3. Attach nuts and bolts
4. Attach the air line to the jack, push in the hose as far as it will go in order to engage the coupler, pull on the hose once instead to ensure a secure fitting.



## DIRECTIONS FOR USE

### Lifting

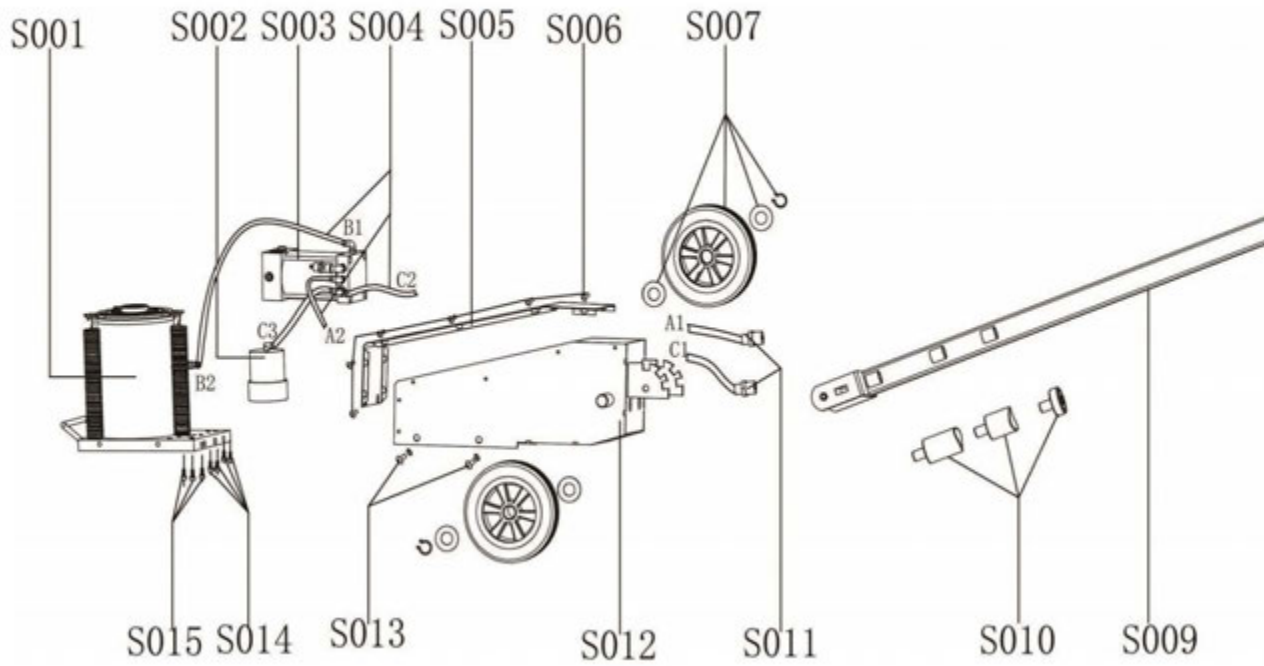
- 1) Attach air supply hose to fitting in handle control valve. (116 -145 PSI / 14 cfm).
- 2) Position the jack in accordance with the vehicle manufacturer's instructions.  
Centre load on saddle.
- 3) Rotate control valve clockwise and hold to raise the piston, release control valve when desired height is reached.
- 4) **WARNING:** During lifting ensure load and jack remain stable, if either appear to be unstable, stop lifting load and reposition jack.
- 5) **IMMEDIATELY** after reaching desired height, secure load with appropriately rated safety stands (refer to vehicle manufacturer's recommended positioning)

### Lowering

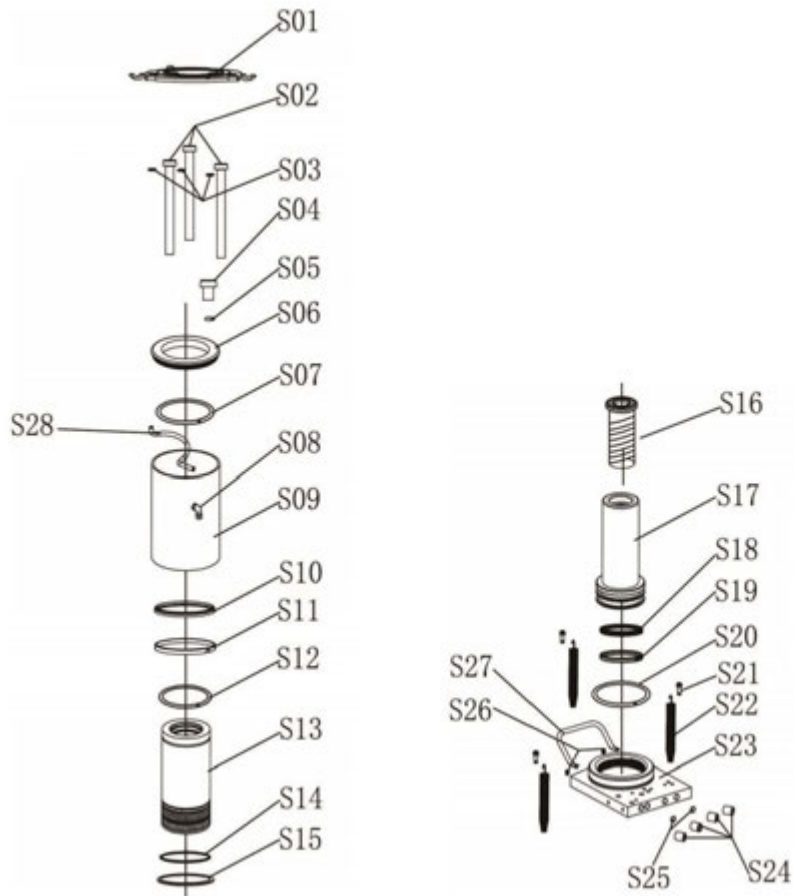
- 1) Ensure air supply line is connected and air compressor is turned on, raise the load enough to remove safety stands.
- 2) **WARNING:** Ensure load does not shift or become unstable when lifting. If load is unstable, slowly lower load back on to the safety stands. Correct instability and try again.
- 3) Carefully remove the safety stands.
- 4) Turn the control valve counter clockwise just enough to allow controlled descent.  
Lower load slowly.
- 5) Once fully lowered, release control and remove jack.

### CAUTION

**Heavier loads will lower very quickly, use extra caution when turning the release valve to lower the load.**

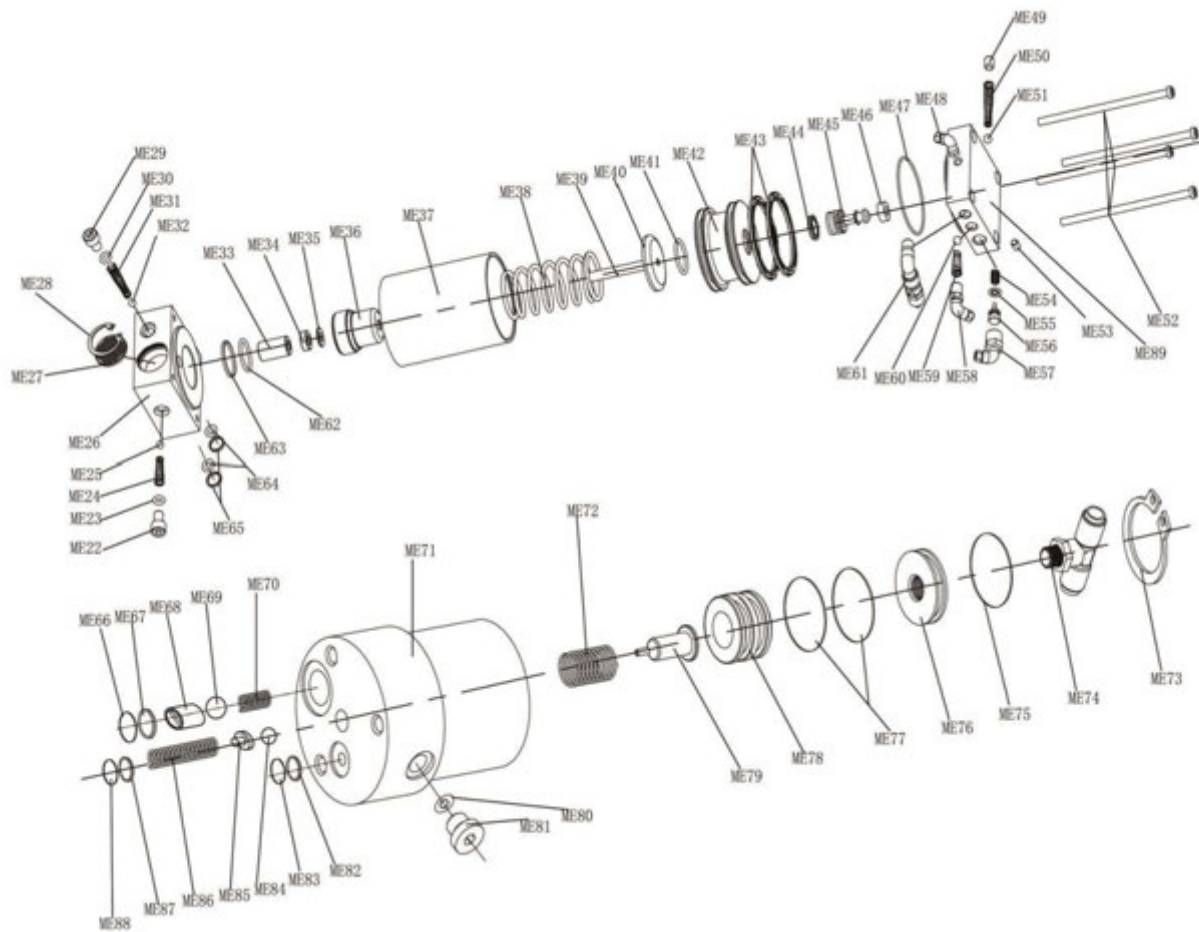


NO.	Description
S001	Oil cylinder assembly
S002	Oil drain valve assembly
S003	Pump assembly
S004	Air hose
S005	Tank cover
S006	Screw
S007	Wheel assembly
S008	Switch assembly
S009	Handle assembly
S010	Extension
S011	Tie in
S012	Tank
S013	Screw
S014	Screw
S015	Screw



NO.	Description
S01	Cap
S02	Screw
S03	Spacer
S04	Screw nut
S05	O ring
S06	Oil tank cap
S07	O ring
S08	Tie in
S09	Oil tank
S10	Dustproof ring
S11	Guide ring
S12	O ring
S13	Outer sleeve
S14	O ring
S15	Locking ring
S16	Extension screw
S17	Piston
S18	XTP
S19	Guide ring

NO.	Description
S20	O ring
S21	Screw
S22	Spring
S23	Base
S24	Scew nut
S25	Steel ball
S26	Screw nut
S27	Handle
S28	Air hose



NO.	Description
ME22	Screw nut
ME23	O ring
ME24	Spring
ME25	Steel ball
ME26	Check valve
ME27	Silencer piece
ME28	Clamp
ME29	Screw nut
ME30	O ring
ME31	Spring
ME32	Steel ball
ME33	Guide bushing
ME34	Spacer
ME35	B3
ME36	Plunger bushing
ME37	Air cylinder
ME38	Spring
ME39	Plunger rod
ME40	Plunger cover
ME41	O ring
ME42	Piston
ME43	PK sealing
ME44	OE sealing

NO.	Description
ME45	Piston
ME46	Rubber cap
ME47	O ring
ME48	Tie in
ME49	Screw nut
ME50	Spring
ME51	Rubber ball
ME52	Screw
ME53	Screw nut
ME54	Spring
ME55	O ring
ME56	Piston
ME57	Tie in
ME58	Tie in
ME59	Spring
ME60	Rubber ball
ME61	Tie in
ME62	O ring
ME63	Locking ring
ME64	O ring
ME65	Locking ring
ME66	O ring
ME67	Locking ring

NO.	Description
ME68	Steel ball bulkhead
ME69	Steel ball
ME70	Spring
ME71	Oil drain valve
ME72	Spring
ME73	Clamp
ME74	Tie in
ME75	O ring
ME76	End cover
ME77	O ring
ME78	Oil drain piston
ME79	Oil drain bolt
ME80	O ring
ME81	Screw nut
ME82	Locking ring
ME83	O ring
ME84	Steel ball
ME85	Screw nut
ME86	Spring
ME87	Locking ring
ME88	O ring
ME89	Air inlet base