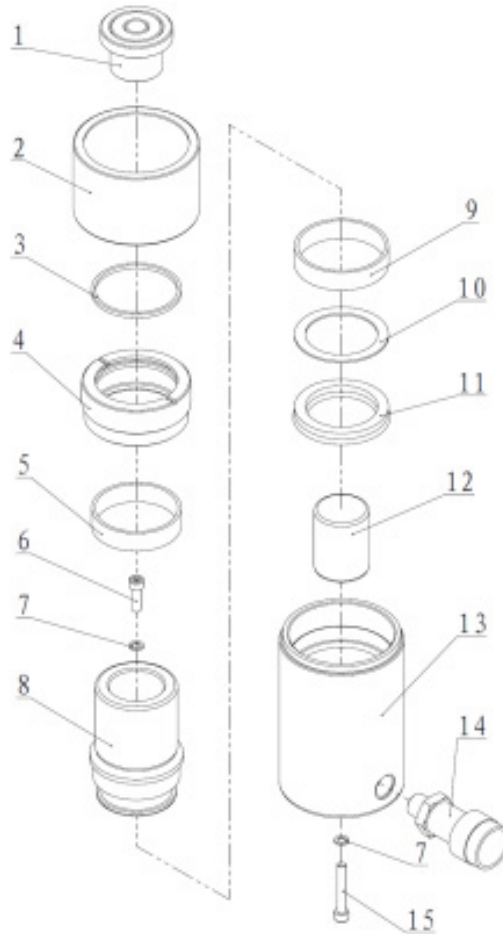


SACS252,254,256,258,2510 SINGLE ACTING CYL

PROD NO. 033035,36,37,38,39



REF	PART NUMBER	DESCRIPTION	REQ	REF	PART NUMBER	DESCRIPTION	REQ
1	PEP-SACS252-01	Saddle	1	11*	PEP-SACS252-11	Y-ring	1
2	PEP-SACS252-02	Thread Cover	1	12	PEP-SACS252-12	Return Spring Assembly SACS252	1
3*	PEP-SACS252-03	Wiper Ring	1	12	PEP-SACS254-12	Return Spring Assembly SACS254	1
4	PEP-SACS252-04	Guide Ring	1	12	PEP-SACS256-12	Return Spring Assembly SACS256	1
5	PEP-SACS252-05	Anti-wear Ring B	1	12	PEP-SACS258-12	Return Spring Assembly SACS258	1
6	PEP-SACS252-06	Bolt	1	12	PEP-SACS2510-12	Return Spring Assembly SACS2510	1
7*	PEP-SACS252-07	Copper Washer	2	13	PEP-SACS252-13	Cylinder Body ES-252 Only	1
8	PEP-SACS252-08	Piston SACS252	1	13	PEP-SACS254-13	Cylinder Body ES-254 Only	1
8	PEP-SACS254-07	Piston SACS254	1	13	PEP-SACS256-13	Cylinder Body ES-256 Only	1
8	PEP-SACS256-07	Piston SACS256	1	13	PEP-SACS258-13	Cylinder Body ES-258 Only	1
8	PEP-SACS258-07	Piston SACS258	1	13	PEP-SACS2510-13	Cylinder Body ES-2510 Only	1
8	PEP-SACS2510-07	Piston SACS2510	1	14	PEP-SACS252-14	Coupler	1
9	PEP-SACS252-09	Anti-wear Ring A	1	15	PEP-SACS252-15	Bolt	1
10*	PEP-SACS252-10	Gasket	1				

* Items included in Repair Kit, Repair Kit order number: PEP-SACS252-RK