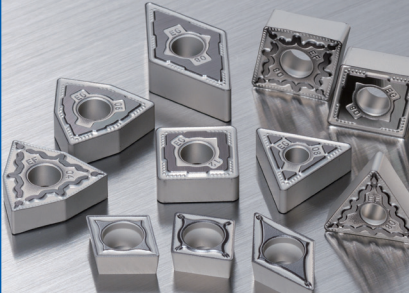
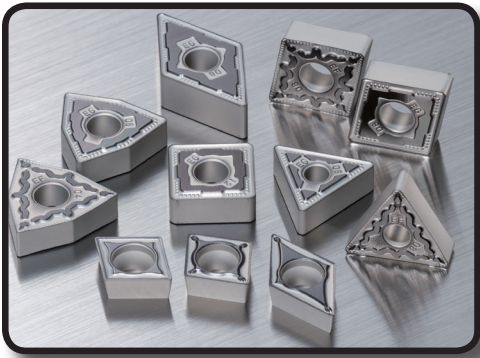


Sumitomo Electric Carbide, Inc.

AC6020M / AC6030M / AC6040M**AC6020M****AC6030M****AC6040M****AC6020M, AC6030M & AC6040M Grades
for machining stainless steels****M**

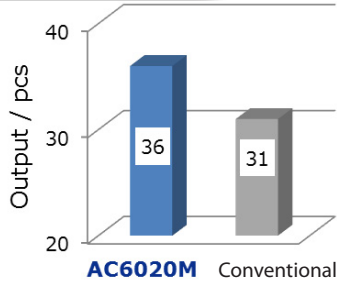


AC6020M & AC6030M Features & Benefits

- Sumitomo's new "Absotech platinum" CVD grade coating, with fine grains and high hardness, achieved 1.5 times higher wear resistance and twice the tool life than conventional grade
- New TiB₂ surface layer creates excellent adhesion and chipping resistance
- Expanded chipbreaker lineup with newly developed "EEM" type gives excellent chip control when roughing

AC6020M Application Examples

Excellent wear resistance.
1.2 times longer tool life.

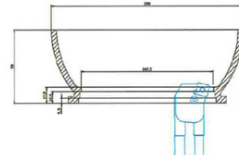


AC6020M

Conventional M30

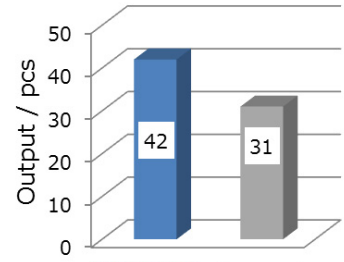


Application Example Cutting Conditions:
Work Material: SUS304 (1.4301, 304) Adaptor
Insert: CNMG432
Cutting Condition: V_c : 400 sfm f : 0.0079 ipr
 a_p : 0.079", Wet



1.4 times longer tool life without chipping.

AC6020M



AC6020M Comp. A

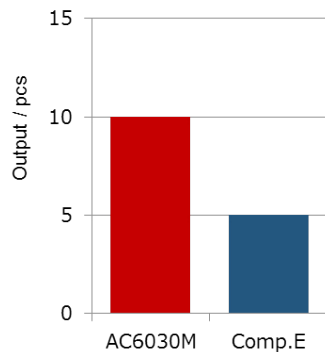


Application Example Cutting Conditions:
Work Material: SUS316L (1.4404, 316L) Casing
Insert: SNMG433
Cutting Condition: V_c : 600 sfm f : 0.0098 ipr
 a_p : 0.098", Wet

AC6030M Application Examples



Twice longer tool life with improved fracture resistance!

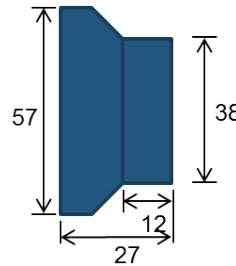


AC6030M

Competitor E

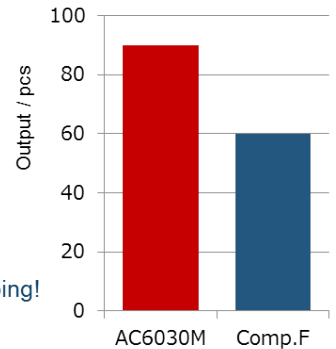


Application Example Cutting Conditions (Impeller):
Work Material: G-X6CrNi189 / Cast Stainless
Insert: CNMG432EEG
Cutting Condition: V_c : 530 sfm f : 0.008 ipr
 a_p : 0.078", Wet



1.5 times longer tool life without chipping!

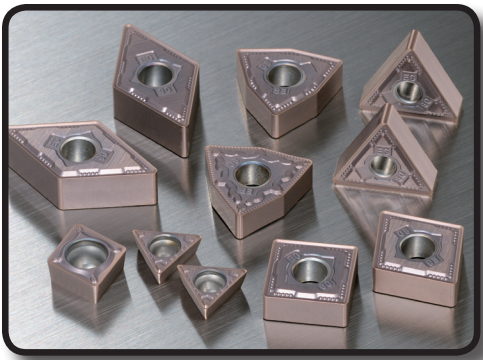
AC6030M



AC6030M Competitor F



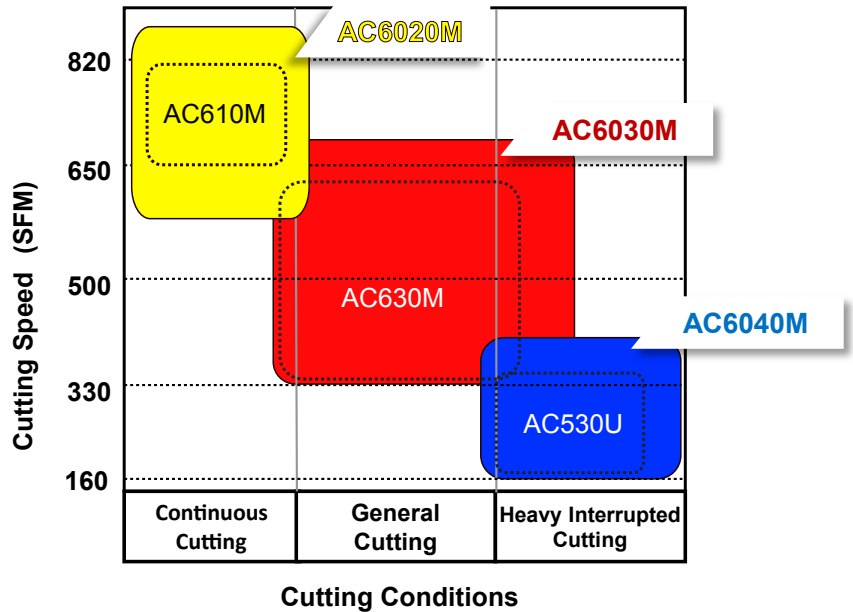
Application Example Cutting Conditions (probe):
Work Material: X5CrNiMo1810 / 316 Stainless
Insert: WNMG432EMU
Cutting Condition: V_c : 600 sfm f : 0.011 ipr
 a_p : 0.118", Wet



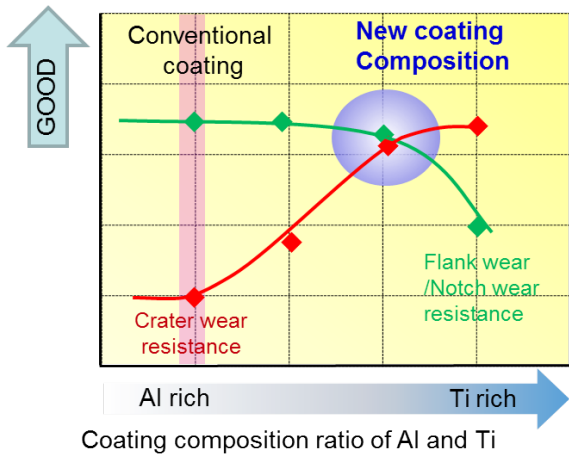
AC6040M Features & Benefits

- Sumitomo's new "Absotech Bronze" PVD grade coating improves wear resistance, adhesion resistance, and fracture resistance which extends tool life - reducing your cost per part
- Expanded chipbreaker lineup with newly developed "EEM" type gives excellent chip control when roughing

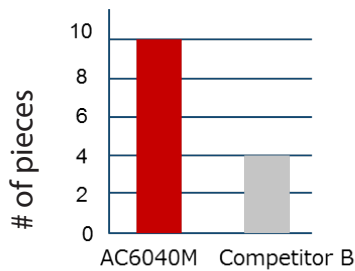
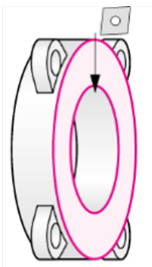
Cutting Conditions



Wear Resistance Chart



AC6040M Application Examples

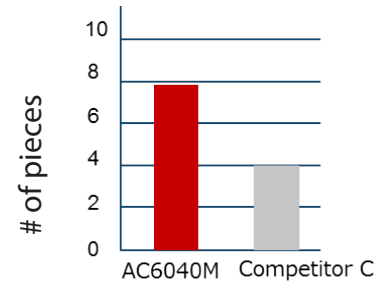
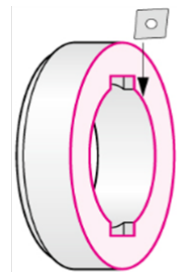
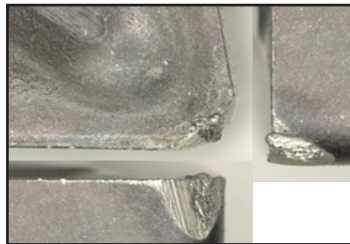


2.6 times longer tool life without breakage!

AC6040M



Competitor B



2.0 times longer tool life!

AC6040M



Competitor C



Application Example Cutting Conditions (flange):
Work Material: X5CrNiMo1810 / 316 Stainless
Insert: CNMG432EGU
Cutting Condition: V_c : 650 - 1,175 sfm f : 0.005 ipr
 a_p : 0.016", Wet

Application Example Cutting Conditions (coupling):
Work Material: G-X6CrNi189 / Cast Stainless
Insert: WNMG432EEG
Cutting Condition: V_c : 230 - 600 sfm f : 0.006 ipr
 a_p : 0.098", Wet

CNMG 80° Diamond/Negative

Sumitomo Catalog Number	AC6020M	AC6030M	AC6040M	Inscribed Circle	Thickness	Nose Radius	Insert Hole Diameter
CNMG431EEF	●	●	●	.500	.1875	.0156	.2031
CNMG432EEF	●	●	●	.500	.1875	.0313	.2031
CNMG433EEF	●	●	●	.500	.1875	.0469	.2031
CNMG431EEG	●	●	●	.500	.1875	.0156	.2031
CNMG432EEG	●	●	●	.500	.1875	.0313	.2031
CNMG433EEG	●	●	●	.500	.1875	.0469	.2031
CNMG542EEG	●	●	●	.625	.250	.0313	.2031
CNMG543EEG	●	●	●	.625	.250	.0469	.250
CNMG544EEG	●	●	●	.625	.250	.0625	.250
CNMG643EEG	●	●	●	.750	.250	.0469	.3126
CNMG644EEG	●	●	●	.750	.250	.0625	.3126
CNMG432EEM	●	●	●	.500	.1875	.0313	.2031
CNMG433EEM	●	●	●	.500	.1875	.0469	.2031
CNMG434EEM	●	●	●	.500	.1875	.0625	.2031
CNMG542EEM	●	●	●	.625	.250	.0313	.250
CNMG543EEM	●	●	●	.625	.250	.0469	.250
CNMG544EEM	●	●	●	.625	.250	.0625	.250
CNMG643EEM	●	●	●	.750	.250	.0469	.3126
CNMG644EEM	●	●	●	.750	.250	.0625	.3126
CNMG866EEM	●	●	●	1.00	.375	.0938	.3622
CNMG431EEX	●	●	●	.500	.1875	.0156	.2031
CNMG432EEX	●	●	●	.500	.1875	.0313	.2031
CNMG433EEX	●	●	●	.500	.1875	.0469	.2031
CNMG543EEX	●	●	●	.625	.250	.0469	.250
CNMG431EGU	●	●	●	.500	.1875	.0156	.2031
CNMG432EGU	●	●	●	.500	.1875	.0313	.2031
CNMG433EGU	●	●	●	.500	.1875	.0469	.2031
CNMG542EGU	★	★	★	.625	.250	.0313	.250
CNMG543EGU	★	★	★	.625	.250	.0469	.250
CNMG544EGU	★	★	★	.625	.250	.0625	.250
CNMG432EGUW	●	●	●	.500	.1875	.0313	.2031
CNMG433EGUW	●	●	●	.500	.1875	.0469	.2031
CNMG432EMU	●	●	●	.500	.1875	.0313	.2031
CNMG433EMU	●	●	●	.500	.1875	.0469	.2031
CNMG434EMU	●	●	●	.500	.1875	.0625	.2031
CNMG543EMU	●	●	●	.625	.250	.0469	.250
CNMG544EMU	●	●	●	.625	.250	.0625	.250
CNMG643EMU	●	●	●	.750	.250	.0469	.3126
CNMG644EMU	●	●	●	.750	.250	.0625	.3126
CNMG431ESU	●	●	●	.500	.1875	.0156	.2031
CNMG432ESU	●	●	●	.500	.1875	.0313	.2031
CNMG433ESU	●	●	●	.500	.1875	.0469	.2031
CNMG431EUP	●	●	●	.500	.1875	.0156	.2031
CNMG432EUP	●	●	●	.500	.1875	.0313	.2031
CNMG433EUP	●	●	●	.500	.1875	.0469	.2031

DNMG 55° Diamond/Negative

DNMG331EEF	●	●	●	.375	.1875	.0156	.150
DNMG332EEF	●	●	●	.375	.1875	.0313	.150
DNMG333EEF	★	★	★	.375	.1875	.0469	.150
DNMG431EEF	●	●	●	.500	.1875	.0156	.2031
DNMG432EEF	●	●	●	.500	.1875	.0313	.2031
DNMG433EEF	●	●	●	.500	.1875	.0469	.2031
DNMG332EEG	●	●	●	.375	.1875	.0313	.150
DNMG333EEG	●	●	●	.375	.1875	.0469	.150
DNMG431EEG	●	●	●	.500	.1875	.0156	.2031
DNMG432EEG	●	●	●	.500	.1875	.0313	.2031
DNMG433EEG	●	●	●	.500	.1875	.0469	.2031
DNMG432EEM	●	●	●	.500	.1875	.0313	.2031
DNMG433EEM	●	●	●	.500	.1875	.0469	.2031
DNMG431EEX	●	●	●	.500	.1875	.0156	.2031
DNMG432EEX	●	●	●	.500	.1875	.0313	.2031
DNMG433EEX	●	●	●	.500	.1875	.0469	.2031
DNMG332EGU	●	●	●	.375	.1875	.0313	.150
DNMG333EGU	●	●	●	.375	.1875	.0469	.150
DNMG431EGU	●	●	●	.500	.1875	.0156	.2031
DNMG432EGU	●	●	●	.500	.1875	.0313	.2031
DNMG433EGU	●	●	●	.500	.1875	.0469	.2031
DNMG332EMU	●	●	●	.375	.1875	.0313	.150
DNMG333EMU	●	●	●	.375	.1875	.0469	.150
DNMG432ESU	●	●	●	.500	.1875	.0313	.2031
DNMG431EUP	●	●	●	.500	.1875	.0156	.2031
DNMG432EUP	●	●	●	.500	.1875	.0313	.2031

AC6020M, AC6030M & AC6040M - Negative Inserts

SNMG 90° Square/Negative

Sumitomo Catalog Number	AC6020M	AC6030M	AC6040M	Inscribed Circle	Thickness	Nose Radius	Insert Hole Diameter
SNMG431EEF	●	●	●	.500	.1875	.0156	.2031
SNMG432EEF	●	●	●	.500	.1875	.0313	.2031
SNMG431EEG	●	●	●	.500	.1875	.0156	.2031
SNMG432EEG	●	●	●	.500	.1875	.0313	.2031
SNMG433EEG	●	●	●	.500	.1875	.0469	.2031
SNMG542EEG	●	●	●	.625	.250	.0313	.250
SNMG543EEG	●	●	●	.625	.250	.0469	.250
SNMG544EEG	★	★	★	.625	.250	.0625	.250
SNMG643EEG	●	●	●	.750	.250	.0469	.3126
SNMG644EEG	●	●	●	.750	.250	.0625	.3126
SNMG432EEM	●	●	●	.500	.1875	.0313	.2031
SNMG433EEM	●	●	●	.500	.1875	.0469	.2031
SNMG542EEM	●	●	●	.625	.250	.0313	.250
SNMG543EEM	●	●	●	.625	.250	.0469	.250
SNMG544EEM	●	●	●	.625	.250	.0625	.250
SNMG643EEM	●	●	●	.750	.250	.0469	.3126
SNMG644EEM	●	●	●	.750	.250	.0625	.3126
SNMG866EEM	●	●	●	1.00	.375	.0938	.3622
SNMG322EEX	●	●	●	.375	.125	.0313	.150
SNMG431EEX	●	●	●	.500	.1875	.0156	.2031
SNMG432EEX	●	●	●	.500	.1875	.0313	.2031
SNMG433EEX	●	●	●	.500	.1875	.0469	.2031
SNMG431EGU	●	●	●	.500	.1875	.0156	.2031
SNMG432EGU	●	●	●	.500	.1875	.0313	.2031
SNMG433EGU	●	●	●	.500	.1875	.0469	.2031
SNMG434EGU	●	●	●	.500	.1875	.0625	.2031
SNMG543EGU	★	★	★	.625	.250	.0469	.250
SNMG432EMU	●	●	●	.500	.1875	.0313	.2031
SNMG433EMU	●	●	●	.500	.1875	.0469	.2031
SNMG543EMU	●	●	●	.625	.250	.0469	.250
SNMG544EMU	●	●	●	.625	.250	.0625	.250
SNMG643EMU	●	●	●	.750	.250	.0469	.3126
SNMG644EMU	●	●	●	.750	.250	.0625	.3126
SNMG432ESU	●	●	●	.500	.1875	.0313	.2031
SNMG432EUP	●	●	●	.500	.1875	.0313	.2031

TNMG Triangle/Negative

Sumitomo Catalog Number	AC6020M	AC6030M	AC6040M	Inscribed Circle	Thickness	Nose Radius	Insert Hole Diameter
TNMG331EEF	●	●	●	.375	.1875	.0156	.150
TNMG332EEF	●	●	●	.375	.1875	.0313	.150
TNMG331EEG	●	●	●	.375	.1875	.0156	.150
TNMG332EEG	●	●	●	.375	.1875	.0313	.150
TNMG333EEG	●	●	●	.375	.1875	.0469	.150
TNMG332EEM	●	●	●	.375	.1875	.0313	.150
TNMG333EEM	●	●	●	.375	.1875	.0469	.150
TNMG666EEM	●	●	●	.750	.375	.0938	.3126
TNMG331EEX	●	●	●	.375	.1875	.0156	.150
TNMG332EEX	●	●	●	.375	.1875	.0313	.150
TNMG333EEX	●	●	●	.375	.1875	.0469	.150
TNMG331EGU	●	●	●	.375	.1875	.0156	.150
TNMG332EGU	●	●	●	.375	.1875	.0313	.150
TNMG333EGU	●	●	●	.375	.1875	.0469	.150
TNMG432EGU	●	●	●	.500	.1875	.0313	.2031
TNMG433EGU	●	●	●	.500	.1875	.0469	.2031
TNMG332EMU	●	●	●	.375	.1875	.0313	.150
TNMG333EMU	●	●	●	.375	.1875	.0469	.150
TNMG432ESU	●	●	●	.375	.1875	.0313	.150
TNMG333ESU	●	●	●	.375	.1875	.0469	.150
TNMG331EUP	●	●	●	.375	.1875	.0156	.150
TNMG332EUP	●	●	●	.375	.1875	.0313	.150
TNMG333EUP	●	●	●	.375	.1875	.0469	.150

- = USA Stocked Item
- = NEW USA Stock Item
- ★ = Worldwide Warehouse Item

TRM 55° Triangle/Negative

Sumitomo Catalog Number	AC6020M	AC6030M	AC6040M	Inscribed Circle	Thickness	Nose Radius	Insert Hole Diameter
TRM551704GU	●	●	●	.394	.197	.0156	.084
TRM551708GU	●	●	●	.394	.197	.0313	.084
TRM551712GU	●	●	●	.394	.197	.0469	.084
TRM551704SU	●	●	●	.394	.197	.0156	.084
TRM551708SU	●	●	●	.394	.197	.0313	.084
TRM551712SU	●	●	●	.394	.197	.0469	.084

VNMG 35° Diamond/Negative

Sumitomo Catalog Number	AC6020M	AC6030M	AC6040M	Inscribed Circle	Thickness	Nose Radius	Insert Hole Diameter
VNMG330.5EEF	●	●	●	.375	.1875	.0078	.150
VNMG331EEF	●	●	●	.375	.1875	.0156	.150
VNMG332EEF	●	●	●	.375	.1875	.0313	.150
VNMG331EEG	●	●	●	.375	.1875	.0156	.150
VNMG332EEG	●	●	●	.375	.1875	.0313	.150
VNMG333EEG	●	●	●	.375	.1875	.0469	.150
VNMG331EEX	●	●	●	.375	.1875	.0156	.150
VNMG332EEX	●	●	●	.375	.1875	.0313	.150
VNMG331EGU	●	●	●	.375	.1875	.0156	.150
VNMG332EGU	●	●	●	.375	.1875	.0313	.150
VNMG331ESU	●	●	●	.375	.1875	.0156	.150
VNMG332ESU	●	●	●	.375	.1875	.0313	.150

WNMG Trigon/Negative

Sumitomo Catalog Number	AC6020M	AC6030M	AC6040M	Inscribed Circle	Thickness	Nose Radius	Insert Hole Diameter
WNMG331EEF	●	●	●	.375	.1875	.0156	.150
WNMG332EEF	●	●	●	.375	.1875	.0313	.150
WNMG431EEF	●	●	●	.500	.1875	.0156	.2031
WNMG432EEF	●	●	●	.500	.1875	.0313	.2031
WNMG332EEG	●	●	●	.375	.1875	.0313	.150
WNMG333EEG	●	●	●	.375	.1875	.0469	.150
WNMG431EEG	●	●	●	.500	.1875	.0156	.2031
WNMG432EEG	●	●	●	.500	.1875	.0313	.2031
WNMG433EEG	●	●	●	.500	.1875	.0469	.2031
WNMG432EEM	●	●	●	.500	.1875	.0313	.2031
WNMG433EEM	●	●	●	.500	.1875	.0469	.2031
WNMG431EEX	●	●	●	.500	.1875	.0156	.2031
WNMG							

AC6020M, AC6030M & AC6040M - Positive Inserts

CCGT 80° Diamond/ 7° Relief Angle							
Sumitomo Catalog Number	AC6020M	AC6030M	AC6040M	Inscribed Circle	Thickness	Nose Radius	Insert Hole Diameter
CCGT32.50MESI	●			.375	.156	.0039	.1732
CCGT32.50.5MESI	●			.375	.156	.0078	.1732
CCGT32.51MESI	●			.375	.156	.0156	.1732

CCMT 80° Diamond/ 7° Relief Angle							
Sumitomo Catalog Number	AC6020M	AC6030M	AC6040M	Inscribed Circle	Thickness	Nose Radius	Insert Hole Diameter
CCMT21.50.5ELB	●			.250	.094	.0078	.110
CCMT21.51ELB	●			.250	.094	.0156	.110
CCMT21.52ELB	●			.250	.094	.0313	.110
CCMT32.50.5ELB	●			.375	.156	.0078	.1732
CCMT32.51ELB	●			.375	.156	.0156	.1732
CCMT32.52ELB	●			.375	.156	.0313	.1732
CCMT21.50.5ELU		●		.250	.094	.0078	.110
CCMT21.51ELU		●		.250	.094	.0156	.110
CCMT32.51ELU		●		.375	.156	.0156	.1732
CCMT32.52ELU		●		.375	.156	.0313	.1732
CCMT32.51EMU	●			.375	.156	.0156	.1732
CCMT32.52EMU	●	★		.375	.156	.0313	.1732
CCMT21.50.5ESU	●	●		.250	.094	.0078	.110
CCMT21.51ESU	●	●		.250	.094	.0156	.110
CCMT21.52ESU	●	●		.250	.094	.0313	.110
CCMT32.50.5ESU	●	●		.375	.156	.0078	.1732
CCMT32.51ESU	●	●		.375	.156	.0156	.1732
CCMT32.52ESU	●	●		.375	.156	.0313	.1732

CPMT 80° Diamond/11° Relief Angle							
Sumitomo Catalog Number	AC6020M	AC6030M	AC6040M	Inscribed Circle	Thickness	Nose Radius	Insert Hole Diameter
CPMT2.51.51ELB	●			.3125	.094	.0156	.134
CPMT321ELB	●			.375	.125	.0156	.1732
CPMT322ELB	●			.375	.125	.0313	.1732
CPMT321ELU		●		.375	.125	.0156	.1732
CPMT321EMU	●			.375	.125	.0156	.1732
CPMT322EMU	●			.375	.125	.0313	.1732
CPMT21.51ENS		●		.250	.094	.0156	.110
CPMT2.51.52ENS		●		.3125	.094	.0313	.134
CPMT322ENS		●		.375	.125	.0313	.1732
CPMT432ENS		●		.500	.1875	.0313	.2165
CPMT32.52ENX	●			.375	.156	.0313	.1732
CPMT2.51.51ESU		●		.3125	.094	.0156	.134
CPMT2.51.52ESU		●		.3125	.094	.0313	.134
CPMT321ESU	●	●		.375	.125	.0156	.1732
CPMT322ESU	●	●		.375	.125	.0313	.1732
CPMT32.51ESU		●		.375	.156	.0156	.1732

DCGT 55° Diamond/ 7° Relief Angle							
Sumitomo Catalog Number	AC6020M	AC6030M	AC6040M	Inscribed Circle	Thickness	Nose Radius	Insert Hole Diameter
DCGT21.50MESI		●		.250	.094	.0039	.110
DCGT21.50.5MESI		●		.250	.094	.0078	.110
DCGT21.51MESI		●		.250	.094	.0156	.110
DCGT32.50MESI		●		.375	.156	.0039	.1732
DCGT32.50.5MESI		●		.375	.156	.0078	.1732
DCGT32.51MESI		●		.375	.156	.0156	.1732
DCGT32.52MESI		●		.375	.156	.0313	.1732

DCMT 55° Diamond/ 7° Relief Angle							
Sumitomo Catalog Number	AC6020M	AC6030M	AC6040M	Inscribed Circle	Thickness	Nose Radius	Insert Hole Diameter
DCMT21.50.5ELB	●			.250	.094	.0078	.110
DCMT21.51ELB	●			.250	.094	.0156	.110
DCMT21.52ELB	●			.250	.094	.0313	.110
DCMT32.50.5ELB	●			.375	.156	.0078	.1732
DCMT32.51ELB	●			.375	.156	.0156	.1732
DCMT32.52ELB	●			.375	.156	.0313	.1732
DCMT21.51ELU		●	●	.250	.094	.0156	.110
DCMT32.51ELU		●		.375	.156	.0156	.1732
DCMT32.52ELU		●		.375	.156	.0313	.1732
DCMT32.51EMU	●			.375	.156	.0156	.1732
DCMT32.52EMU	●			.375	.156	.0313	.1732
DCMT21.50.5ESU		●	●	.250	.094	.0078	.110
DCMT21.51ESU		●	●	.250	.094	.0156	.110
DCMT21.52ESU		●	●	.250	.094	.0313	.110
DCMT32.50.5ESU		●	●	.375	.156	.0078	.1732
DCMT32.51ESU		●	●	.375	.156	.0156	.1732
DCMT32.52ESU		●	●	.375	.156	.0313	.1732

SCMT 90° Square/ 7° Relief Angle							
Sumitomo Catalog Number	AC6020M	AC6030M	AC6040M	Inscribed Circle	Thickness	Nose Radius	Insert Hole Diameter
SCMT32.51ELB	●			.375	.156	.0156	.1732
SCMT32.52ELB	●			.375	.156	.0313	.1732
SCMT32.52EMU	●			.375	.156	.0313	.1732
SCMT32.51ESU	●	●	●	.375	.156	.0156	.1732
SCMT32.52ESU	●	●	●	.375	.156	.0313	.1732

SPMT 90° Square/ 11° Relief Angle							
Sumitomo Catalog Number	AC6020M	AC6030M	AC6040M	Inscribed Circle	Thickness	Nose Radius	Insert Hole Diameter
SPMT321ELB	●			.375	.156	.0156	.1732
SPMT322ELB	●			.375	.156	.0313	.1732
SPMT321ELU		●	●	.375	.156	.0156	.1732
SPMT322ELU		●	●	.375	.156	.0313	.1732
SPMT21.51ENS		●	●	.250	.094	.0156	.110
SPMT2.522ENS		●	●	.3125	.125	.0313	.134
SPMT322ENS		●	●	.375	.125	.0313	.130
SPMT432ENS		●	●	.500	.1875	.0313	.2165
SPMT32.52ENX	●	●	●	.375	.156	.0313	.1732

TCMT Triangle/ 7° Relief Angle							
Sumitomo Catalog Number	AC6020M	AC6030M	AC6040M	Inscribed Circle	Thickness	Nose Radius	Insert Hole Diameter
TCMT21.51ELB	●			.250	.094	.0156	.110
TCMT21.52ELB	●			.250	.094	.0313	.110
TCMT21.51ELU		●		.250	.094	.0156	.110
TCMT21.52ELU		●		.250	.094	.0313	.110
TCMT21.51ESU	●	●	●	.250	.094	.0156	.110
TCMT21.52ESU	●	●	●	.250	.094	.0313	.110
TCMT32.51ESU	●	●	●	.375	.156	.0156	.1693
TCMT32.52ESU	●	●	●	.375	.156	.0313	.1693

● = USA Stocked Item
 ● = NEW USA Stock Item
 ★ = Worldwide Warehouse Item

M before the chipbreaker indicates a negative nose tolerance (-0.0001" to -0.0005")

TPMT Triangle/ 11° Relief Angle							
Sumitomo Catalog Number	AC6020M	AC6030M	AC6040M	Inscribed Circle	Thickness	Nose Radius	Insert Hole Diameter
TPMT630.5ELB	●			.1875	.094	.0078	.090
TPMT631ELB	●			.1875	.094	.0156	.090
TPMT1.81.50.5ELB	●			.219	.094	.0078	.102
TPMT1.81.51ELB	●			.219	.094	.0156	.102
TPMT220.5ELB	●			.250	.125	.0078	.130
TPMT221ELB	●			.250	.125	.0156	.130
TPMT222ELB	●			.250	.125	.0313	.130
TPMT221ELU		●	●	.250	.125	.0156	.130
TPMT222ELU		●	●	.250	.125	.0313	.130
TPMT221EMU	●			.250	.125	.0156	.130
TPMT222EMU	●			.250	.125	.0313	.130
TPMT331EMU	●			.375	.1875	.0156	.1693
TPMT332EMU	●			.375	.1875	.0313	.1693
TPMT630.5ESU	●			.1875	.094	.0078	.090
TPMT631ESU	●			.1875	.094	.0156	.090
TPMT220.5ESU	●	●	●	.250	.125	.0078	.130
TPMT221ESU	●	●	●	.250	.125	.0156	.130
TPMT222ESU	●	●	●	.250	.125	.0313	.130
TPMT331ESU	●	●	●	.375	.1875	.0156	.1693
TPMT332ESU	●	●	●	.375	.1875	.0313	.1693

VBGT 35° Diamond/ 5° Relief Angle							
Sumitomo Catalog Number	AC6020M	AC6030M	AC6040M	Inscribed Circle	Thickness	Nose Radius	Insert Hole Diameter
VBGT220MESI		●		.250	.125	.0039	.134
VBGT220.5MESI		●		.250	.125	.0078	.134
VBGT221MESI		●		.250	.125	.0156	.134
VBGT222MESI		●		.250	.125	.0313	.134
VBGT330MESI		●		.375	.1875	.0039	.1732
VBGT330.5MESI		●		.375	.1875	.0078	.1732
VBGT331MESI		●		.375	.1875	.0156	.1732
VBGT332MESI		●		.375	.1875	.0313	.1732

VBMT 35° Diamond/ 5° Relief Angle							
Sumitomo Catalog Number	AC6020M	AC6030M	AC6040M	Inscribed Circle	Thickness	Nose Radius	Insert Hole Diameter
VBMT220.5ELB	●			.250	.125	.0078	.134
VBMT221ELB	●			.250	.125	.0156	.134
VBMT222ELB	●			.250	.125	.0313	.134
VBMT331ELB	●			.375	.1875	.0156	.1732
VBMT332ELB	●			.375	.1875	.0313	.1732
VBMT333ELB	●			.375	.1875	.0469	.1732
VBMT221ELU		●	●	.250	.125	.0156	.134
VBMT331ELU		●		.375	.1875	.0156	.1732
VBMT332ELU		●		.375	.1875	.0313	.1732
VBMT221ESU		●		.250	.125	.0156	.134
VBMT222ESU	●			.250	.125	.0313	.134
VBMT331ESU	●			.375	.1875	.0156	.1732
VBMT332ESU	●			.375	.1875	.0313	.1732

VCGT 35° Diamond/ 7° Relief Angle							
Sumitomo Catalog Number	AC6020M	AC6030M	AC6040M	Inscribed Circle	Thickness	Nose Radius	Insert Hole Diameter
VCGT220MESI		●		.250	.125	.0039	.134
VCGT220.5MESI		●		.250	.125	.0078	.134
VCGT221MESI		●		.250	.125	.0156	.134
VCGT222MESI		●		.250	.125	.0313	.134
VCGT330MESI		●		.375	.1875	.0039	.1732
VCGT330.5MESI		●		.375	.1875	.0078	.1732
VCGT331MESI		●		.375	.1875	.0156	.1732
VCGT332MESI		●		.375	.1875	.0313	.1732



SUMITOMO

CARBIDE - CBN - DIAMOND

Sumitomo Electric Carbide, Inc.

Sumitomo Electric Carbide, Inc. Headquarters

1001 Business Center Drive
Mount Prospect, IL 60056-2181
P.O. Box 545, Mt. Prospect, IL 60056-0545
Phone: (800) 950-5202
Phone: (847) 635-0044
Fax: (847) 635-7866
<http://www.sumicarbide.com>

Sumitomo Electric Tool Engineering Center

5637 S. Westridge Drive
New Berlin, WI 53151
Phone: (800) 950-5202

Indiana Branch

595 S. Emerson Avenue
Suite 100
Greenwood, IN 46143
Phone: (317) 859-1601

Torrance Branch

21241 South Western Avenue
Suite 120
Torrance, CA 90501
Phone: (800) 950-5202
Fax: (310) 782-0211

Sumitomo Carbide Canada, Inc.

150 Research Lane
Unit #210
Guelph, Ontario N1G 4T2
Canada
Phone: (519) 265-6050
Phone: (844) 211-6050

Detroit Branch

14496 Sheldon Road #230
Plymouth, MI 48170
Phone: (800) 239-5177
Phone: (734) 451-0200
Fax: (734) 451-5338

Huntsville Branch

6700 Odyssey Drive
Suite 211
Huntsville, AL 35806
Phone: (256) 971-1203
Fax: (256) 971-1205

