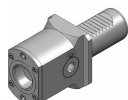
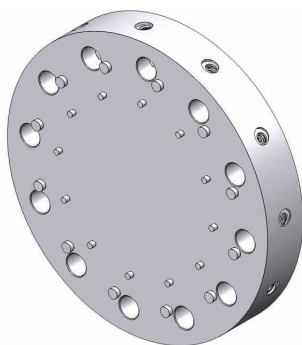


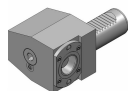
ecoTurn 310

Coromant Capto® Program



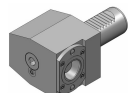
Face and ID clamping unit

C3	C3-RC2030-00060M	Standard
----	------------------	----------



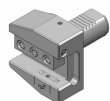
OD clamping unit (+20)

C3	C3-LC2030-41020M	Standard
----	------------------	----------



OD clamping unit (+30)

C3	C3-LC2030-41030M	Standard
----	------------------	----------



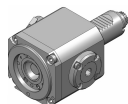
Face cutting holder, IC

20	ASHA-R-VDI30-20-HP IC 80 bar	Standard
20	ASHA-L-VDI30-20-HP IC 80 bar	Standard



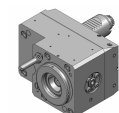
Cut-off holder, adjustable height, IC

SH 26	APBA-R-VDI30-21-HP IC 80 bar	Standard
SH 26	APBA-L-VDI30-21-HP IC 80 bar	Standard
SH 32	APBA-R-VDI30-25-HP IC 80 bar	Standard
SH 32	APBA-L-VDI30-25-HP IC 80 bar	Standard



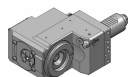
Straight drill/milling unit

C3	343-830820N1119 1:1	EC	For quotation
C3	343-830820N964 1:1	IC 30 bar	For quotation



Straight offset drill/milling unit

C3	343-830820N1129 1:1	IC 80 bar	For quotation
C3	343-830820N1071 1:2	IC 80 bar	For quotation



Right angle back set drill/milling unit

C3	343-830820N732 1:1	EC	For quotation
C3	343-830820N733 1:1	IC 80 bar	For quotation

Turning applications

Tool holder	Insert/Tool	Insert
T-Max® P	 > CNMG	
CoroTurn® 107	 > CCMT	
T-Max® P	 > DNMG	
CoroTurn® 107	 > DCMT	
CoroTurn® 107	 > VBMT	
CoroThread® 266	 > 266	
CoroTurn® SL	 > CoroTurn® 107	 > TCMT
CoroTurn® 107		
CoroTurn® 107		
Silent Tools™	 > CoroTurn® 107	 > VBMT
Drill adaptor	 > CoroDrill® 870	 > Exchangeable drill tip
	 > CoroDrill® 881	 > Indexable drilling insert
	 > EasyFix	 > Boring bars
		 > Boring bars
		 > Boring bars

Rotating applications

Tool holder	Insert/Collet/Tool	Insert
Coromant EH	 > CoroMill® 316	
	 > CoroMill® 390	 > R390 
	 > CoroMill® 490	 > 490R 
	 > CoroMill® 216	 > R216 
	 > CoroMill® 300	 > R300 
	 > CoroBore® 824	 > CXS 
	 > CoroBore® 825	 > TCMT 
CoroChuck™ 930	 > Cylindrical collet	 > CoroMill® Plura 
		 > CoroDrill® 860 
ER collet chuck	 > ER collet	 > CoroMill® Plura 
		 > CoroDrill® 860 
CoroMill® 390	 > R390	