

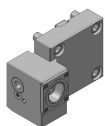
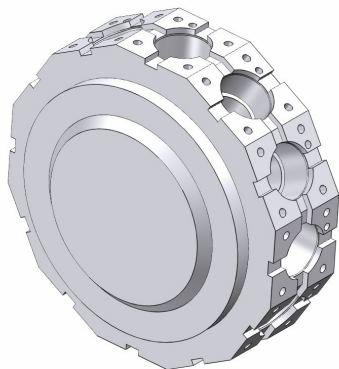
# EMCO Maxxturn 110 (BMT65)

Toolholder Program



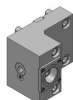
# Maxxturn 110 (BMT65)

Coromant Capto® Program



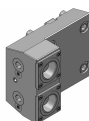
## Straight clamping unit

C4	C4-TRE-BT65A	Standard
C4	C4-TLE-BT65A	Standard



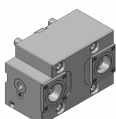
## Straight clamping unit, long

C4	343-830111C565	For quotation
C5	343-830111C567	For quotation



## Straight clamping unit, double, Y axis

C4	C4-TRE-BT65A-YT	Standard
C4	C4-TLE-BT65A-YT	Standard



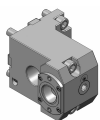
## Straight clamping unit, both sides

C4	C4-TRE-BT65A-DT	Standard
C4	C4-TLE-BT65A-DT	Standard



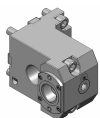
## Straight clamping unit, both sides, double, Y axis

C4	343-830111C696	For quotation
----	----------------	---------------



## Right angle clamping unit

C4	C4-TLI-BT65A	Standard
C4	C4-TRI-BT65A	Standard

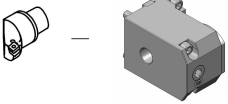
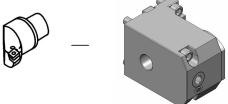
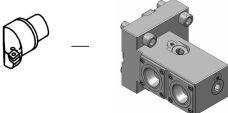
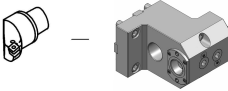
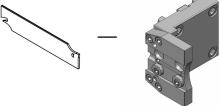
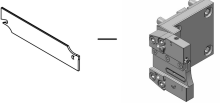
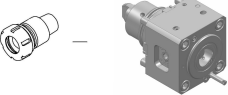
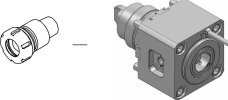
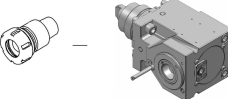
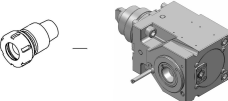
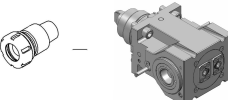


## Right angle clamping unit

C5	C5-TRI-BT65A	Standard
C5	C5-TLI-BT65A	Standard

# Maxxturn 110 (BMT65)

## Coromant Capto® Program

	<b>Right angle clamping unit, back set</b>			
	C4	C4-TRI-BT65A-SS		Standard
	C4	C4-TLI-BT65A-SS		Standard
	<b>Right angle clamping unit, back set</b>			
	C5	343-830111C716		For quotation
	<b>Right angle clamping unit, double</b>			
	C4	343-830111C698		For quotation
	<b>Right angle clamping unit, long, both sides</b>			
	C4	343-830111C590		For quotation
	C5	343-830111C610		For quotation
	<b>Cut-off holder, adjustable</b>			
	SH 32	APB-TNE-BT65A-25		Standard
	<b>Cut-off holder, adjustable, IC</b>			
	SH 32	APBR-BT65A-25-HP IC 80 bar		Standard
	SH 32	APBL-BT65A-25-HP IC 80 bar		Standard
	<b>Straight drill/milling unit</b>			
	C4	343-830820N2672 1:1	EC	For quotation
	C4	343-830820N2673 1:1	IC 80 bar	For quotation
	<b>OD drill/milling unit (10000 RPM)</b>			
	C4	343-830820N2674 1:1	EC	For quotation
	C4	343-830820N2675 1:1	IC 80 bar	For quotation
	<b>Right angle drill/milling unit, L2=100</b>			
	C4	343-830820N2667 1:1	EC	For quotation
	C4	343-830820N2668 1:1	IC 80 bar	For quotation
	<b>Right angle drill/milling unit, L2=100, (10000 RPM)</b>			
	C4	343-830820N2669 1:1	EC	For quotation
	C4	343-830820N2670 1:1	IC 80 bar	For quotation
	<b>Right angle drill/milling unit, both sides (+68/-64), L2=100</b>			
	C4	343-830820N2671 1:1	EC	For quotation

# Turning applications

Tool holder	Insert/Tool	Insert
T-Max® P	 > CNMG	
CoroTurn® 107	 > CCMT	
T-Max® P	 > DNMG	
CoroTurn® 107	 > DCMT	
CoroTurn® 107	 > VBMT	
CoroThread® 266	 > 266	
CoroTurn® SL	 > CoroTurn® 107	 > TCMT
CoroTurn® 107		
CoroTurn® 107		
Silent Tools™	 > CoroTurn® 107	 > VBMT
Drill adaptor	 > CoroDrill® 870	 > Exchangeable drill tip
	 > CoroDrill® 881	 > Indexable drilling insert
	 > EasyFix	 > Boring bars
		 > Boring bars
		 > Boring bars

# Rotating applications

Tool holder	Insert/Collet/Tool	Insert
Coromant EH	 > CoroMill® 316	
	 > CoroMill® 390	 > R390 
	 > CoroMill® 490	 > 490R 
	 > CoroMill® 216	 > R216 
	 > CoroMill® 300	 > R300 
	 > CoroBore® 824	 > CXS 
	 > CoroBore® 825	 > TCMT 
CoroChuck™ 930	 > Cylindrical collet	 > CoroMill® Plura 
		 > CoroDrill® 860 
ER collet chuck	 > ER collet	 > CoroMill® Plura 
		 > CoroDrill® 860 
CoroMill® 390	 > R390	