

SANDVIK
Coromant

CoroMill® 600

New opportunities in round insert profile milling

A versatile, high-performance milling cutter

CoroMill® 600 has long been a natural choice to meet the challenges of blade machining.

With the new addition of ISO M and ISO S grades, completely new possibilities open up within a wide range of applications.



Secure machining with the iLock™ interface

iLock™ is a secure locking interface between insert and cutter body which prevents the cutting forces from affecting the insert position.

The unique iLock™ solution provides easy and accurate insert indexing, increased reliability and considerably improved tool life.



Extra-close pitch

By adding an extra-close pitch to the assortment, the metal removal rate and the productivity is taken to a new level.

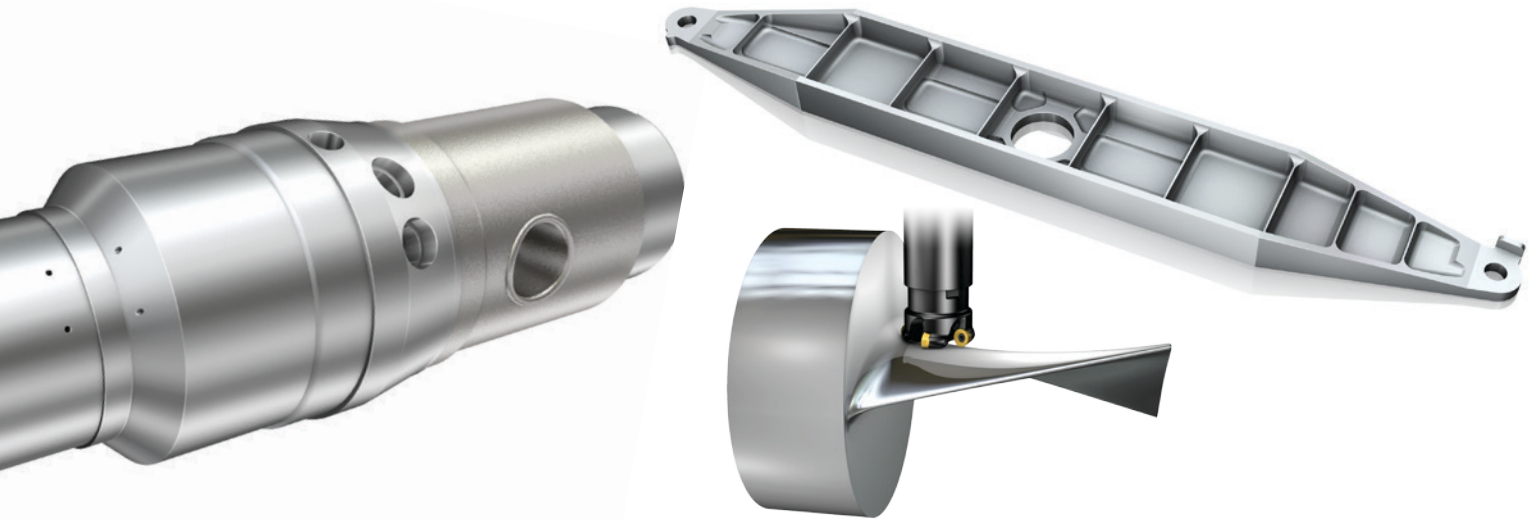


Application

- Profile milling
- Roughing to semi-finishing
- Ramping capacity
- Diameter: 25–100 mm (1–2.5 inch)
- Aerospace, energy, general engineering applications



ISO application area



CoroMill® 600 can be used in many applications, for example machining of aerospace landing gear beams, oil and gas tubing hanger holes in clad Inconel, and turbine blades.

CoroMill® 600 overview

Cutter body

Unit	Ordering code	Coupling	IC	Diameter	Pitch
Metric	600-XXX	Cylindrical	10	25, 32	H
		Arbor	10	40, 42, 50, 52	H
			12	40, 50, 52, 63, 66, 80, 100	M, H, HX (50, 52)
		Coromant Capto®	10	42, 52	H
12	50, 52, 63		H, HX (50, 52)		
Inch	A600-XXX	Cylindrical	10	1.0, 1.25, 1.5	H
			12	1.5	H
		Arbor	10	2.0	H
			12	2.0, 2.5	M, H, HX (2.0)

Inserts

IC	Ordering code	Geometry	Grades
10	600-1045XXX	E-ML, M-ML	GC1010, GC1030, M30B, S30T, S40T, GC1040, GC4240
		M-MM	GC1030, M30B, GC4240
12	600-1252XXX	E-ML, M-ML	GC1010, GC1030, M30B, S30T, S40T, GC1040, GC4240
		M-MM	GC1030, M30B, GC4240

For more information and ordering, see Supplement 17.1 and www.sandvik.coromant.com/coromill600

Head office:
 AB Sandvik Coromant
 SE-811 81 Sandviken, Sweden
 E-mail: info.coromant@sandvik.com
www.sandvik.coromant.com
 en-GB © AB Sandvik Coromant 2016

