

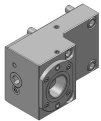
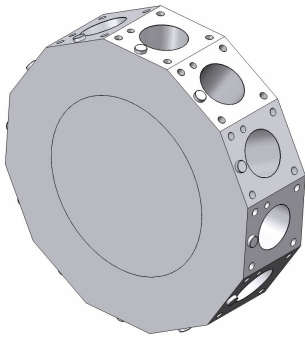
# Okuma LB 4000 EX M/MY

Toolholder Program



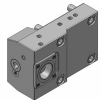
# LB 4000 EX M/MY

Coromant Capto® Program



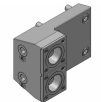
## OD clamping unit

C4	343-830111C506	For quotation
C5	C5-TRE-OK60B (343-830111C379-RC)	Standard
C5	C5-TLE-OK60B (343-830111C379-LC)	Standard



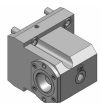
## OD clamping unit, short

C4	343-830111C687	For quotation
C5	343-830111C424	For quotation



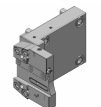
## OD clamping unit, double, Y axis

C4	343-830111C549	For quotation
C5	C5-TRE-OK60B-YT (343-830111C437-RC)	Standard
C5	C5-TLE-OK60B-YT (343-830111C437-LC)	Standard



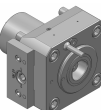
## Face and ID clamping unit

C4	343-830111C548	For quotation
C5	C5-TRI-OK60B (343-830111C380-RC)	Standard
C5	C5-TLI-OK60B (343-830111C380-LC)	Standard



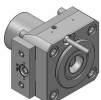
## Cut-off holder, adjustable, IC

SH 32	343-810100R10 (48-99304R)	IC 80 bar	For quotation
SH 32	343-810100L10 (48-99304L)	IC 80 bar	For quotation



## OD drill/milling unit

C4	C4-DNE-OK60B-E 1:1	EC	Standard
	(410104047-60)		
C4	C4-DNE-OK60B-I 1:1	IC 80 bar	Standard
	(410104048-60)		

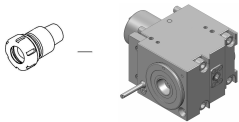


## OD drill/milling unit (special offer!)

C4	343-830820N1771 1:1	EC	For quotation
	(410104040-60)		

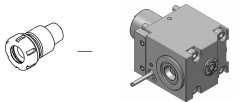
# LB 4000 EX M/MY

## Coromant Capto® Program



### Face drill/milling unit

C4	C4-DNI-OK60B-E (410504060-60)	1:1	EC	Standard
C4	C4-DNI-OK60B-I (410504061-60)	1:1	IC 80 bar	Standard



### Face drill/milling unit (special offer!)

C4	343-830820N1765 (410504051-60)	1:1	EC	For quotation
C4	343-830820N1766 (410504052-60)	1:1	IC 80 bar	For quotation