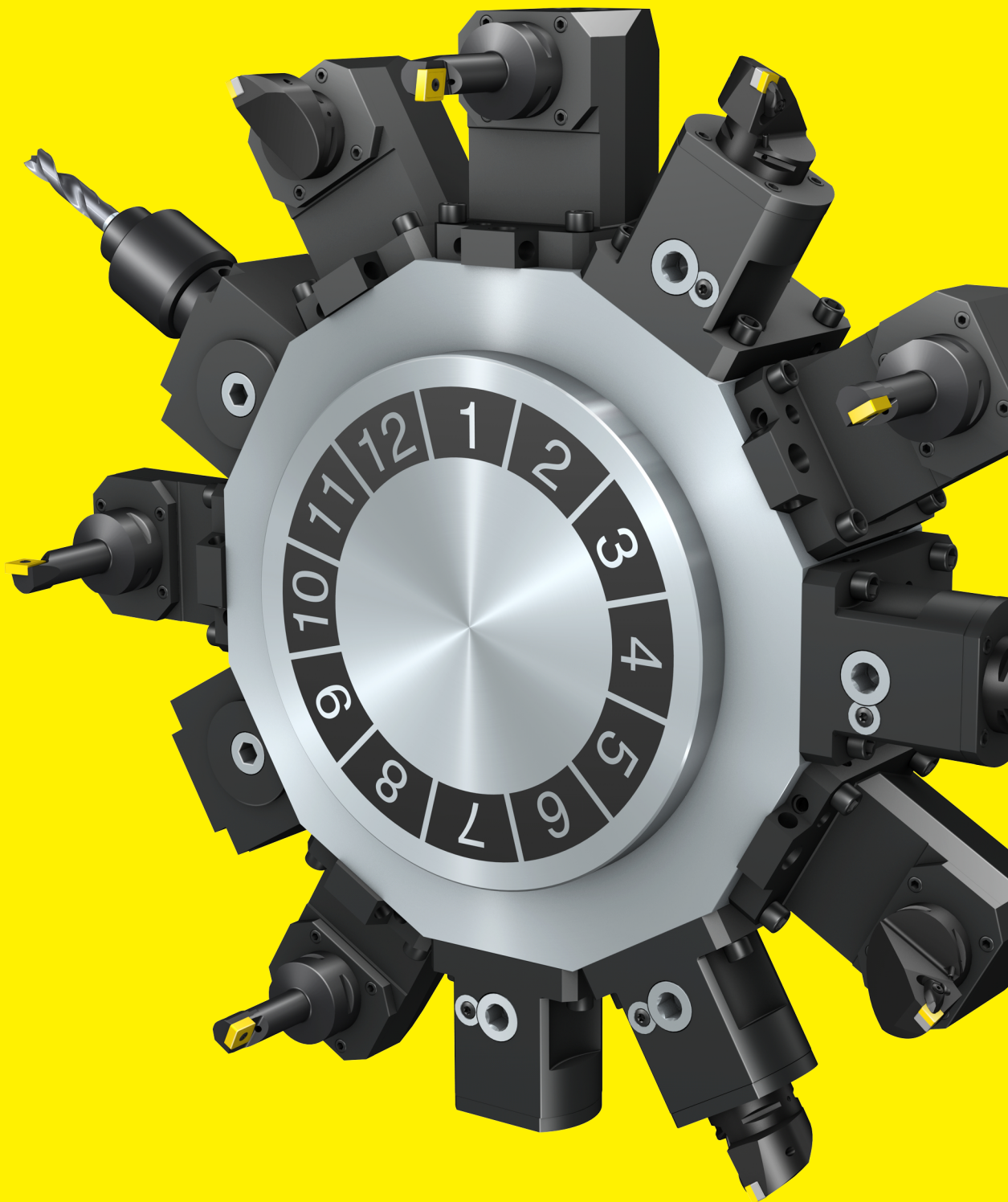


Doosan

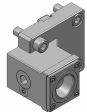
Puma 1500-2500 MS/SY (12 ST, BMT55)

Toolholder Program



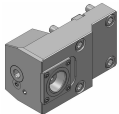
# Puma 1500-2500 MS/SY (12 ST, BMT55)

Coromant Capto® - Standard Program



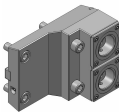
## Straight clamping unit

C4	C4-TRE-BT55A (343-830111C563-RC)	Standard
C4	C4-TLE-BT55A (343-830111C563-LC)	Standard



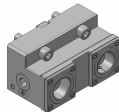
## Straight clamping unit, short

C4	343-830111C552	For quotation
----	----------------	---------------



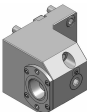
## Straight clamping unit, double, Y axis

C4	343-830111C801	For quotation
----	----------------	---------------



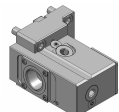
## Straight clamping unit, both sides

C4	343-830111C532	For quotation
----	----------------	---------------



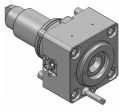
## Right angle clamping unit, short

C4	C4-TRI-BT55A (343-830111C554-RC)	Standard
C4	C4-TLI-BT55A (343-830111C554-LC)	Standard



## Right angle clamping unit, both sides

C4	343-830111C559	For quotation
----	----------------	---------------

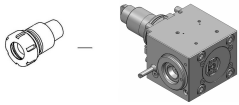


## Straight drill/milling unit

C3	C3-DNE-BT55A-E (410103014-55)	1:1	EC	Standard
C3	C3-DNE-BT55A-I (410103015-55)	1:1	IC 80 bar	Standard

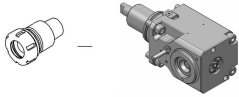
# Puma 1500-2500 MS/SY (12 ST, BMT55)

## Coromant Capto® - Standard Program



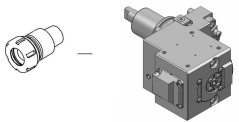
### Right angle drill/milling unit, L2=70

C3	C3-DNI-BT55A-E (410503042-55)	1:1	EC	Standard
C3	C3-DNI-BT55A-I (410503043-55)	1:1	IC 80 bar	Standard



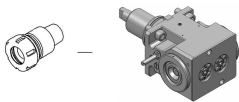
### Right angle drill/milling unit, L2=85

C3	343-830820N1938 (410503037-55)	1:1	EC	For quotation
C3	343-830820N1939 (410503036-55)	1:1	IC 80 bar	For quotation



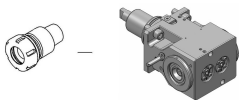
### Right angle drill/milling unit, sub spindle, L2=70

C3	343-830820N2025 (410503038-55)	1:1	EC	For quotation
C3	343-830820N2026 (410503039-55)	1:1	IC 80 bar	For quotation



### Right angle drill/milling unit, both sides, L2=70

C3	343-830820N1142 (410503004-55)	1:1	EC	For quotation
----	-----------------------------------	-----	----	---------------



### Right angle drill/milling unit, both sides, L2=85

C3	343-830820N1940 (410503035-55)	1:1	EC	For quotation
----	-----------------------------------	-----	----	---------------