

CMZ

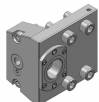
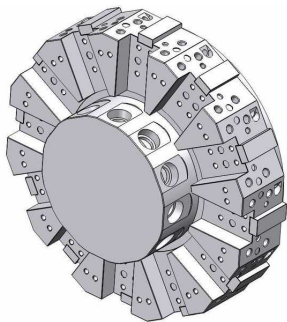
TC 15 - 35 M/MS/Y/YS

Toolholder Program



TC 15 - 35 M/MS/Y/YS

Coromant Capto® Program



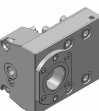
OD clamping unit

C4	C4-TRE-MS-A	Standard
C4	C4-TLE-MS-A	Standard



OD clamping unit, both sides, extended

C4	343-830111C751	For quotation
----	----------------	---------------



OD clamping unit

C5	C5-TRE-MS-A	Standard
C5	C5-TLE-MS-A	Standard



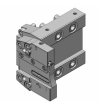
Face and ID clamping unit

C4	C4-TRI-MS-A	Standard
C4	C4-TLI-MS-A	Standard
C5	C5-TRI-MS-A	Standard
C5	C5-TLI-MS-A	Standard



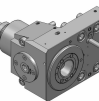
Face and ID clamping unit, extended

C5	343-830111C748	For quotation
----	----------------	---------------



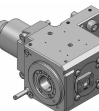
Cut-off holder, adjustable, IC

SH 32	343-810100R67	IC 80 bar	For quotation
SH 32	343-810100L67	IC 80 bar	For quotation



OD drill/milling unit

C4	343-830820N376	1:1	EC	For quotation
C4	343-830820N377	1:1	IC 30 bar	For quotation

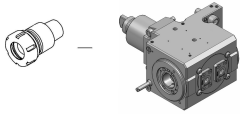


Face drill/milling unit

C4	343-830820N372	1:1	EC	For quotation
C4	343-830820N373	1:1	IC 80 bar	For quotation

TC 15 - 35 M/MS/Y/YS

Coromant Capto® Program



Face drill/milling unit, both sides

C4

343-830820N843 1:1

EC

For quotation

Turning applications

Tool holder	Insert/Tool	Insert
T-Max® P	 > CNMG	
CoroTurn® 107	 > CCMT	
T-Max® P	 > DNMG	
CoroTurn® 107	 > DCMT	
CoroTurn® 107	 > VBMT	
CoroThread® 266	 > 266	
CoroTurn® SL	 > CoroTurn® 107	 > TCMT
CoroTurn® 107		
CoroTurn® 107		
Silent Tools™	 > CoroTurn® 107	 > VBMT
Drill adaptor	 > CoroDrill® 870	 > Exchangeable drill tip
	 > CoroDrill® 881	 > Indexable drilling insert
	 > EasyFix	 > Boring bars
		 > Boring bars
		 > Boring bars

Rotating applications

Tool holder	Insert/Collet/Tool	Insert
Coromant EH	 > CoroMill® 316	
	 > CoroMill® 390	 > R390 
	 > CoroMill® 490	 > 490R 
	 > CoroMill® 216	 > R216 
	 > CoroMill® 300	 > R300 
	 > CoroBore® 824	 > CXS 
	 > CoroBore® 825	 > TCMT 
CoroChuck™ 930	 > Cylindrical collet	 > CoroMill® Plura 
		 > CoroDrill® 860 
ER collet chuck	 > ER collet	 > CoroMill® Plura 
		 > CoroDrill® 860 
CoroMill® 390	 > R390	