

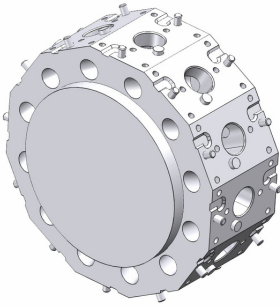
# DMG MORI NLX 1500-2500 Y/SY VDI 40 Trifix®

Toolholder Program



# NLX 1500-2500 Y/SY VDI 40 Trifix®

Coromant Capto® Program



—



## OD clamping unit - double VDI serration

C4	343-830111C680	For quotation
C5	C5-TRE-GM40V	Standard
C5	C5-TLE-GM40V	Standard



—



## OD clamping unit, both sides

C4	343-830111C225	For quotation
----	----------------	---------------



—

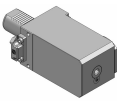


## OD clamping unit, both sides

C5	343-830111C482	For quotation
----	----------------	---------------



—

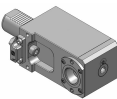


## Face and ID clamping unit, right, Trifix®, L2=120

C4	343-830111C1143	For quotation
----	-----------------	---------------



—

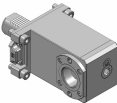


## Face and ID clamping unit, left, Trifix®, L2=120

C4	343-830111C1142	For quotation
----	-----------------	---------------



—



## Face and ID clamping unit, left, Trifix®, L2=120

C5	C5-TRI-GM40V-L	Standard
C5	C5-TLI-GM40V-L	Standard



—

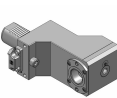


## Face and ID clamping unit, right, Trifix®, L2=120

C5	C5-TRI-GM40V-R	Standard
C5	C5-TLI-GM40V-R	Standard



—

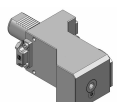


## Face and ID clamping unit, left, Trifix®, L2=120

C4	343-830111C1120	For quotation
----	-----------------	---------------



—

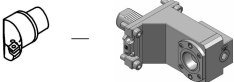


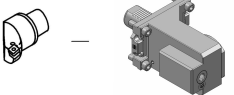
## Face and ID clamping unit, right, Trifix®, L2=120

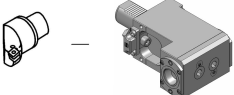
C4	343-830111C1121	For quotation
----	-----------------	---------------

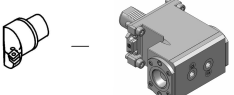
# NLX 1500-2500 Y/SY VDI 40 Trifix®

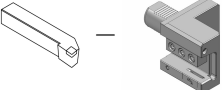
## Coromant Capto® Program

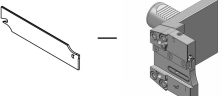
	<b>Face and ID clamping unit, left, Trifix®, L2=120</b>	
C5	343-830111C1124	For quotation

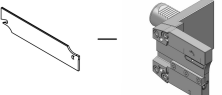
	<b>Face and ID clamping unit, right, Trifix®, L2=120</b>	
C5	343-830111C1125	For quotation

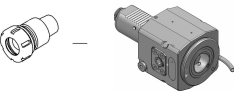
	<b>Face and ID clamping unit, both sides, Trifix®, L2=120</b>	
C4	343-830111C1149	For quotation

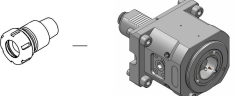
	<b>Face and ID clamping unit, both sides, Trifix®, L2=120</b>	
C5	343-830111C1151	For quotation

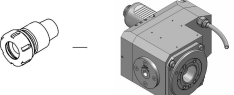
	<b>OD cutting holder, IC</b>	
25	ASHR-VDI40-25-HP IC 80 bar	Standard
25	ASHL-VDI40-25-HP IC 80 bar	Standard

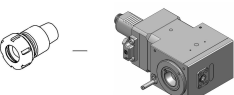
	<b>Cut-off holder, adjustable, IC - double VDI serration</b>	
SH 32	APBR-VDI40-25-HP IC 80 bar	Standard
SH 32	APBL-VDI40-25-HP IC 80 bar	Standard

	<b>Cut-off holder, adjustable, long, IC - double VDI serration</b>		
SH 32	343-810100R8	IC 80 bar	For quotation
SH 32	343-810100L8	IC 80 bar	For quotation

	<b>Straight drill/milling unit</b>		
C4	343-830820L2551 1:1	EC	For quotation
C4	343-830820L2552 1:1	IC 80 bar	For quotation

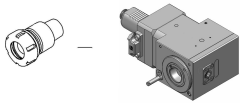
	<b>Straight drill/milling unit</b>		
C5	C5-DNE-GM40V-E 1:1	EC	Standard
C5	C5-DNE-GM40V-I 1:1	IC 80 bar	Standard

	<b>Straight offset drill/milling unit - double VDI serration</b>		
C4	343-830820N2311 1:1	IC 80 bar	For quotation

	<b>Right angle drill/milling unit, Trifix®, L2=120</b>		
C4	343-830820L2543 1:1	EC	For quotation
C4	343-830820L2544 1:1	IC 80 bar	For quotation

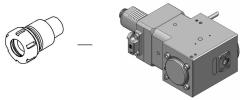
# NLX 1500-2500 Y/SY VDI 40 Trifix®

## Coromant Capto® Program



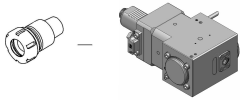
### Right angle drill/milling unit, Trifix®, L2=120, (10000 RPM)

C4	343-830820L2592	1:1	EC	For quotation
C4	343-830820L2593	1:1	IC 80 bar	For quotation



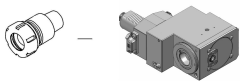
### Right angle drill/milling unit, Trifix®, L2=120

C4	343-830820R2543	1:1	EC	For quotation
C4	343-830820R2544	1:1	IC 80 bar	For quotation



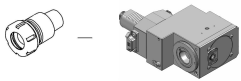
### Right angle drill/milling unit, Trifix®, L2=120, (10000 RPM)

C4	343-830820R2592	1:1	EC	For quotation
C4	343-830820R2593	1:1	IC 80 bar	For quotation



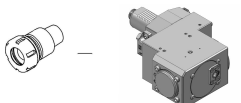
### Right angle back set drill/milling unit, Trifix®, L2=120

C4	343-830820L2596	1:1	EC	For quotation
C4	343-830820L2597	1:1	IC 80 bar	For quotation



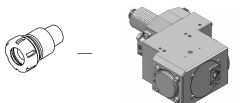
### Right angle back set drill/milling unit, Trifix®, L2=120, (10000 RPM)

C4	343-830820L2688	1:1	EC	For quotation
C4	343-830820L2689	1:1	IC 80 bar	For quotation



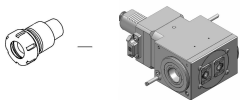
### Right angle back set drill/milling unit, Trifix®, L2=120

C4	343-830820R2596	1:1	EC	For quotation
C4	343-830820R2597	1:1	IC 80 bar	For quotation



### Right angle back set drill/milling unit, Trifix®, L2=120, (10000 RPM)

C4	343-830820R2688	1:1	EC	For quotation
C4	343-830820R2689	1:1	IC 80 bar	For quotation



### Right angle drill/milling unit, both sides, Trifix®, L2=120

C4	343-830820N2545	1:1	EC	For quotation
----	-----------------	-----	----	---------------

# Turning applications

Tool holder	Insert/Tool	Insert
T-Max® P	 > CNMG	
CoroTurn® 107	 > CCMT	
T-Max® P	 > DNMG	
CoroTurn® 107	 > DCMT	
CoroTurn® 107	 > VBMT	
CoroThread® 266	 > 266	
CoroTurn® SL	 > CoroTurn® 107	 > TCMT
CoroTurn® 107		
CoroTurn® 107		
Silent Tools™	 > CoroTurn® 107	 > VBMT
Drill adaptor	 > CoroDrill® 870	 > Exchangeable drill tip
	 > CoroDrill® 881	 > Indexable drilling insert
	 > EasyFix	 > Boring bars
		 > Boring bars
		 > Boring bars

## Rotating applications

Tool holder	Insert/Collet/Tool	Insert
Coromant EH	 > CoroMill® 316	
	 > CoroMill® 390	 > R390 
	 > CoroMill® 490	 > 490R 
	 > CoroMill® 216	 > R216 
	 > CoroMill® 300	 > R300 
	 > CoroBore® 824	 > CXS 
	 > CoroBore® 825	 > TCMT 
CoroChuck™ 930	 > Cylindrical collet	 > CoroMill® Plura 
		 > CoroDrill® 860 
ER collet chuck	 > ER collet	 > CoroMill® Plura 
		 > CoroDrill® 860 
CoroMill® 390	 > R390	