

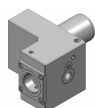
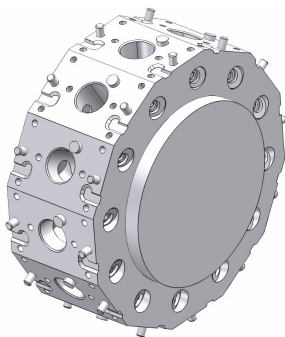
Gildemeister CTX beta 4A VDI40 Trifix®

Toolholder Program



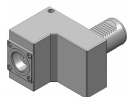
CTX beta 4A VDI40 Trifix®

Coromant Capto® Program



OD clamping unit

C4	343-830111C338	For quotation
----	----------------	---------------



OD clamping unit - double VDI serration

C4	343-830111C680	For quotation
C5	C5-TRE-GM40V (343-830111C591-RC)	Standard
C5	C5-TLE-GM40V (343-830111C591-LC)	Standard



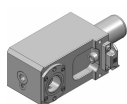
OD clamping unit, both sides

C4	343-830111C225	For quotation
----	----------------	---------------



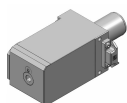
OD clamping unit, both sides

C5	343-830111C482	For quotation
----	----------------	---------------



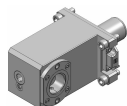
Face and ID clamping unit, left, Trifix®, L2=120

C4	343-830111C1142	For quotation
----	-----------------	---------------



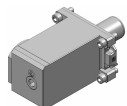
Face and ID clamping unit, right, Trifix®, L2=120

C4	343-830111C1143	For quotation
----	-----------------	---------------



Face and ID clamping unit, left, Trifix®, L2=120

C5	C5-TRI-GM40V-L (343-830111C1146-RC)	Standard
C5	C5-TLI-GM40V-L (343-830111C1146-LC)	Standard

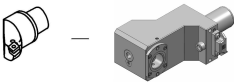
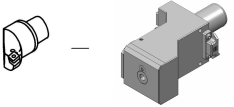
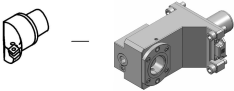
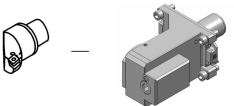
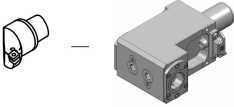
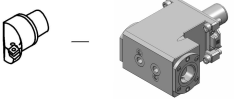
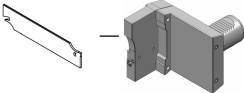
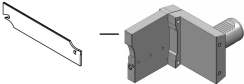
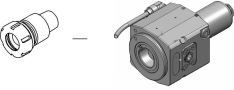
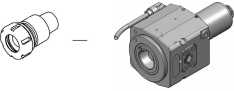


Face and ID clamping unit, right, Trifix®, L2=120

C5	C5-TRI-GM40V-R (343-830111C1147-RC)	Standard
C5	C5-TLI-GM40V-R (343-830111C1147-LC)	Standard

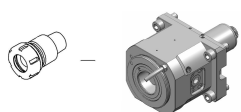
CTX beta 4A VDI40 Trifix®

Coromant Capto® Program

	Face and ID clamping unit, left, Trifix®, L2=120			
	C4	343-830111C1120		For quotation
	Face and ID clamping unit, right, Trifix®, L2=120			
	C4	343-830111C1121		For quotation
	Face and ID clamping unit, left, Trifix®, L2=120			
	C5	343-830111C1124		For quotation
	Face and ID clamping unit, right, Trifix®, L2=120			
	C5	343-830111C1125		For quotation
	Face and ID clamping unit, both sides, Trifix®, L2=120			
	C4	343-830111C1149		For quotation
	Face and ID clamping unit, both sides, Trifix®, L2=120			
	C5	343-830111C1151		For quotation
	Cut-off holder, adjustable, IC - double VDI serration			
	HF=25	APBR-VDI40-25-HP IC 80		Standard
		bar		
	HF=25	APBL-VDI40-25-HP IC 80		Standard
		bar		
	Cut-off holder, adjustable, long, IC - double VDI serration			
	SH 32	343-810100R8 IC 80		For quotation
		(48-99091R)	bar	
	SH 32	343-810100L8 IC 80		For quotation
		(48-99091L)	bar	
	Straight drill/milling unit			
	C4	343-830820L2551 1:1 EC		For quotation
		(410104166-40L)		
	C4	343-830820L2552 1:1 IC 80		For quotation
		(410104167-40L)	bar	
	Straight drill/milling unit (10000 RPM)			
	C4	343-830820L2553 1:1 EC		For quotation
		(410104168-40L)		
	C4	343-830820L2554 1:1 IC 80		For quotation
		(410104169-40L)	bar	

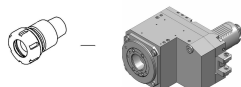
CTX beta 4A VDI40 Trifix®

Coromant Capto® Program



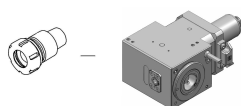
Straight drill/milling unit

C5	C5-DNE-GM40V-E (410105022-40)	1:1	EC	Standard
C5	C5-DNE-GM40V-I (410105023-40)	1:1	IC 80 bar	Standard



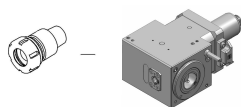
Straight offset drill/milling unit - double VDI serration

C4	343-830820N2311 (410104156-40)	1:1	IC 80 bar	For quotation
----	-----------------------------------	-----	--------------	---------------



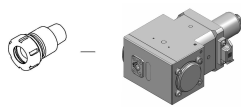
Right angle drill/milling unit, Trifix®, L2=100

C4	343-830820L2540 (410504322-40L)	1:1	EC	For quotation
C4	343-830820L2541 (410504323-40L)	1:1	IC 80 bar	For quotation



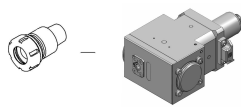
Right angle drill/milling unit, Trifix®, L2=100, (10000 min-1)

C4	343-830820L2590 (410504332-40L)	1:1	EC	For quotation
C4	343-830820L2591 (410504333-40L)	1:1	IC 80 bar	For quotation



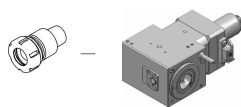
Right angle drill/milling unit, Trifix®, L2=100

C4	343-830820R2540 (410504322-40R)	1:1	EC	For quotation
C4	343-830820R2541 (410504323-40R)	1:1	IC 80 bar	For quotation



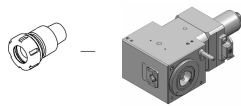
Right angle drill/milling unit, Trifix®, L2=100, (10000 min-1)

C4	343-830820R2590 (410504332-40R)	1:1	EC	For quotation
C4	343-830820R2591 (410504333-40R)	1:1	IC 80 bar	For quotation



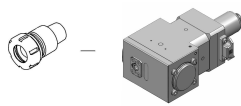
Right angle drill/milling unit, Trifix®, L2=120

C4	343-830820L2543 (410504325-40L)	1:1	EC	For quotation
C4	343-830820L2544 (410504326-40L)	1:1	IC 80 bar	For quotation



Right angle drill/milling unit, Trifix®, L2=120, (10000 min-1)

C4	343-830820L2592 (410504334-40L)	1:1	EC	For quotation
C4	343-830820L2593 (410504335-40L)	1:1	IC 80 bar	For quotation

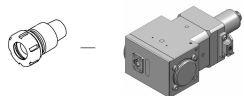


Right angle drill/milling unit, Trifix®, L2=120

C4	343-830820R2543 (410504325-40R)	1:1	EC	For quotation
C4	343-830820R2544 (410504326-40R)	1:1	IC 80 bar	For quotation

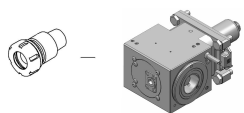
CTX beta 4A VDI40 Trifix®

Coromant Capto® Program



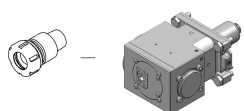
Right angle drill/milling unit, Trifix®, L2=120, (10000 min-1)

C4	343-830820R2592 1:1 (410504334-40R)	EC	For quotation
C4	343-830820R2593 1:1 (410504335-40R)	IC 80 bar	For quotation



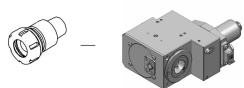
Right angle drill/milling unit, Trifix®, L2=100

C5	C5-DNI-GM40V-E-L 1:1 (410505014-40L)	EC	Standard
C5	C5-DNI-GM40V-I-L 1:1 (410505015-40L)	IC 80 bar	Standard



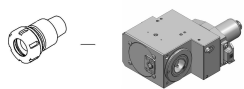
Right angle drill/milling unit, Trifix®, L2=100

C5	C5-DNI-GM40V-E-R 1:1 (410505014-40R)	EC	Standard
C5	C5-DNI-GM40V-I-R 1:1 (410505015-40R)	IC 80 bar	Standard



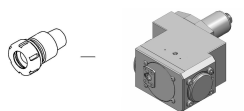
Right angle back set drill/milling unit, Trifix®, L2=100

C4	343-830820L2594 1:1 (410504336-40L)	EC	For quotation
C4	343-830820L2595 1:1 (410504337-40L)	IC 80 bar	For quotation



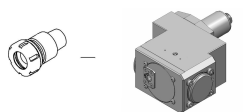
Right angle back set drill/milling unit, Trifix®, L2=100, (10000 min-1)

C4	343-830820L2694 1:1 (410504356-40L)	EC	For quotation
C4	343-830820L2695 1:1 (410504357-40L)	IC 80 bar	For quotation



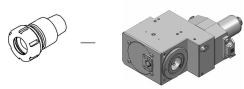
Right angle back set drill/milling unit, Trifix®, L2=100

C4	343-830820R2594 1:1 (410504336-40R)	EC	For quotation
C4	343-830820R2595 1:1 (410504337-40R)	IC 80 bar	For quotation



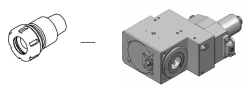
Right angle back set drill/milling unit, Trifix®, L2=100, (10000 min-1)

C4	343-830820R2694 1:1 (410504356-40R)	EC	For quotation
C4	343-830820R2695 1:1 (410504357-40R)	IC 80 bar	For quotation



Right angle back set drill/milling unit, Trifix®, L2=120

C4	343-830820L2596 1:1 (410504338-40L)	EC	For quotation
C4	343-830820L2597 1:1 (410504339-40L)	IC 80 bar	For quotation

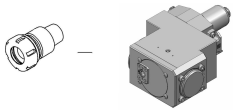


Right angle back set drill/milling unit, Trifix®, L2=120, (10000 min-1)

C4	343-830820L2688 1:1 (410504354-40L)	EC	For quotation
C4	343-830820L2689 1:1 (410504355-40L)	IC 80 bar	For quotation

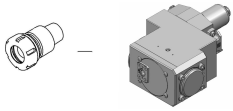
CTX beta 4A VDI40 Trifix®

Coromant Capto® Program



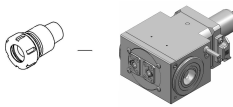
Right angle back set drill/milling unit, Trifix®, L2=120

C4	343-830820R2596 1:1 (410504338-40R)	EC	For quotation
C4	343-830820R2597 1:1 (410504339-40R)	IC 80 bar	For quotation



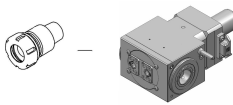
Right angle back set drill/milling unit, Trifix®, L2=120, (10000 min-1)

C4	343-830820R2688 1:1 (410504354-40R)	EC	For quotation
C4	343-830820R2689 1:1 (410504355-40R)	IC 80 bar	For quotation



Right angle drill/milling unit, both sides, Trifix®, L2=100

C4	343-830820N2542 1:1 (410504324-40)	EC	For quotation
----	---------------------------------------	----	---------------



Right angle drill/milling unit, both sides, Trifix®, L2=120

C4	343-830820N2545 1:1 (410504327-40)	EC	For quotation
----	---------------------------------------	----	---------------