

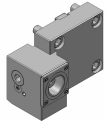
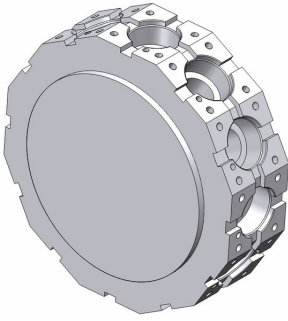
Hyundai WIA SKT200, 250TTM/MS/SY

Toolholder Program



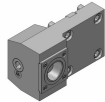
SKT200, 250TTM/MS/SY

Coromant Capto® Program



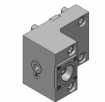
Straight clamping unit

| | | |
|----|--------------|----------|
| C4 | C4-TRE-BT65A | Standard |
| C4 | C4-TLE-BT65A | Standard |



Straight clamping unit

| | | |
|----|--------------|----------|
| C5 | C5-TRE-BT65A | Standard |
| C5 | C5-TLE-BT65A | Standard |



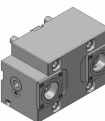
Straight clamping unit, long

| | | |
|----|----------------|---------------|
| C4 | 343-830111C565 | For quotation |
| C5 | 343-830111C567 | For quotation |



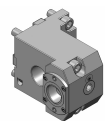
Straight clamping unit, double, Y axis

| | | |
|----|-----------------|----------|
| C4 | C4-TRE-BT65A-YT | Standard |
| C4 | C4-TLE-BT65A-YT | Standard |



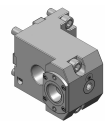
Straight clamping unit, both sides

| | | |
|----|-----------------|----------|
| C4 | C4-TRE-BT65A-DT | Standard |
| C4 | C4-TLE-BT65A-DT | Standard |



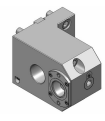
Right angle clamping unit

| | | |
|----|--------------|----------|
| C4 | C4-TLI-BT65A | Standard |
| C4 | C4-TRI-BT65A | Standard |



Right angle clamping unit

| | | |
|----|--------------|----------|
| C5 | C5-TRI-BT65A | Standard |
| C5 | C5-TLI-BT65A | Standard |

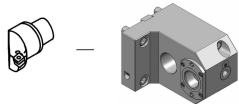


Right angle clamping unit (+70), long

| | | |
|----|----------------|---------------|
| C4 | 343-830111C571 | For quotation |
| C5 | 343-830111C573 | For quotation |

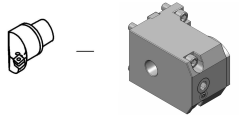
SKT200, 250TTM/MS/SY

Coromant Capto® Program



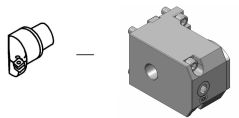
Right angle clamping unit (+20), long

| | | |
|----|----------------|---------------|
| C4 | 343-830111C572 | For quotation |
| C5 | 343-830111C574 | For quotation |



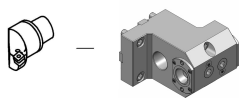
Right angle clamping unit, back set

| | | |
|----|-----------------|----------|
| C4 | C4-TRI-BT65A-SS | Standard |
| C4 | C4-TLI-BT65A-SS | Standard |



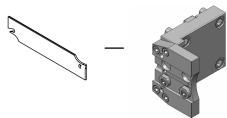
Right angle clamping unit, back set

| | | |
|----|----------------|---------------|
| C5 | 343-830111C716 | For quotation |
|----|----------------|---------------|



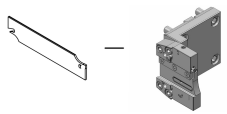
Right angle clamping unit, long, both sides

| | | |
|----|----------------|---------------|
| C4 | 343-830111C590 | For quotation |
| C5 | 343-830111C610 | For quotation |



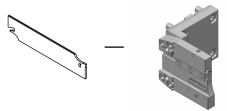
Cut-off holder, adjustable

| | | |
|-------|------------------|----------|
| SH 32 | APB-TNE-BT65A-25 | Standard |
|-------|------------------|----------|



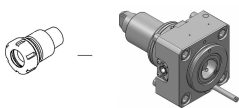
Cut-off holder, adjustable, IC

| | | |
|-------|----------------------------|----------|
| SH 32 | APBR-BT65A-25-HP IC 80 bar | Standard |
| SH 32 | APBL-BT65A-25-HP IC 80 bar | Standard |



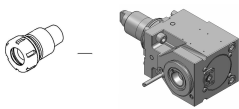
Cut-off holder, adjustable, long, IC

| | | | |
|-------|---------------|-----------|---------------|
| SH 32 | 343-810100R27 | IC 80 bar | For quotation |
| SH 32 | 343-810100L27 | IC 80 bar | For quotation |



Straight drill/milling unit

| | | | | |
|----|----------------|-----|-----------|----------|
| C4 | C4-DNE-BT65A-E | 1:1 | EC | Standard |
| C4 | C4-DNE-BT65A-I | 1:1 | IC 80 bar | Standard |



Right angle drill/milling unit, L2=100

| | | | | |
|----|----------------|-----|-----------|----------|
| C4 | C4-DNI-BT65A-E | 1:1 | EC | Standard |
| C4 | C4-DNI-BT65A-I | 1:1 | IC 80 bar | Standard |

Turning applications

| Tool holder | Insert/Tool | Insert |
|-----------------|--|---|
| T-Max® P |  > CNMG |  |
| CoroTurn® 107 |  > CCMT |  |
| T-Max® P |  > DNMG |  |
| CoroTurn® 107 |  > DCMT |  |
| CoroTurn® 107 |  > VBMT |  |
| CoroThread® 266 |  > 266 |  |
| CoroTurn® SL |  > CoroTurn® 107 |  > TCMT |
| CoroTurn® 107 |  |  |
| CoroTurn® 107 |  | |
| Silent Tools™ |  > CoroTurn® 107 |  > VBMT |
| Drill adaptor |  > CoroDrill® 870 |  > Exchangeable drill tip |
| |  > CoroDrill® 881 |  > Indexable drilling insert |
| |  > EasyFix |  > Boring bars |
| | |  > Boring bars |
| | |  > Boring bars |

Rotating applications

| Tool holder | Insert/Collet/Tool | Insert |
|-----------------|--|---|
| Coromant EH |  > CoroMill® 316 |  |
| |  > CoroMill® 390 |  > R390  |
| |  > CoroMill® 490 |  > 490R  |
| |  > CoroMill® 216 |  > R216  |
| |  > CoroMill® 300 |  > R300  |
| |  > CoroBore® 824 |  > CXS  |
| |  > CoroBore® 825 |  > TCMT  |
| CoroChuck™ 930 |  > Cylindrical collet |  > CoroMill® Plura  |
| | |  > CoroDrill® 860  |
| ER collet chuck |  > ER collet |  > CoroMill® Plura  |
| | |  > CoroDrill® 860  |
| CoroMill® 390 |  > R390 |  |