

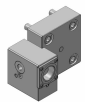
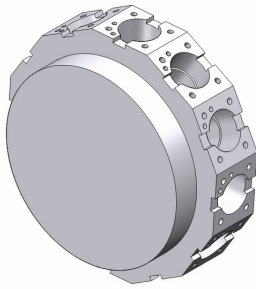
# Nakamura-Tome WY-250

Toolholder Program



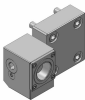
# WY-250

## Coromant Capto® Program



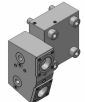
### OD clamping unit

C3	343-830111C121	For quotation
----	----------------	---------------



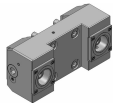
### OD clamping unit

C4	C4-TRE-NA55A	Standard
C4	C4-TLE-NA55A	Standard



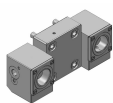
### OD clamping unit, double

C3	C3-TRE-NA55A-TT	Standard
C3	C3-TLE-NA55A-TT	Standard



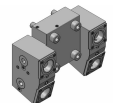
### OD clamping unit, both sides

C3	343-830111C226	For quotation
----	----------------	---------------



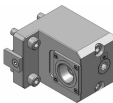
### OD clamping unit, both sides

C4	C4-TRE-NA55A-DT	Standard
C4	C4-TLE-NA55A-DT	Standard



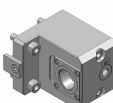
### OD clamping unit, both sides, double

C3	343-830111C439	For quotation
----	----------------	---------------



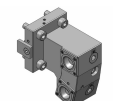
### Face and ID clamping unit

C3	343-830111C35	For quotation
----	---------------	---------------



### Face and ID clamping unit

C4	C4-TRI-NA55A	Standard
C4	C4-TLI-NA55A	Standard

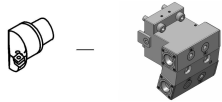


### Face and ID clamping unit, double

C3	C3-TRI-NA55A-TT	Standard
C3	C3-TLI-NA55A-TT	Standard

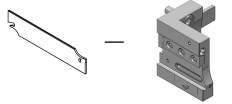
# WY-250

## Coromant Capto® Program



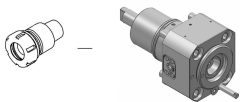
### Face and ID clamping unit, both sides, double

C3	343-830111C464			For quotation
----	----------------	--	--	---------------



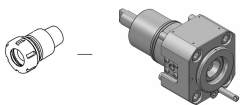
### Cut-off holder, IC

SH 32	APBR-NA55A-25-HP IC 80 bar			Standard
SH 32	APBL-NA55A-25-HP IC 80 bar			Standard



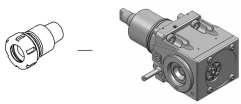
### OD drill/milling unit

C3	C3-DNE-NA55A-E	1:1	EC	Standard
C3	C3-DNE-NA55A-I	1:1	IC 80 bar	Standard



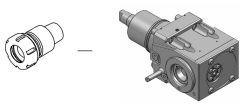
### OD drill/milling unit (special offer!)

C3	343-830820N1162	1:1	EC	For quotation
C3	343-830820N1420	1:1	IC 30 bar	For quotation



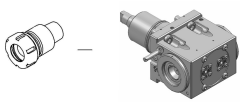
### Face drill/milling unit, L2=55

C3	343-830820N2576	1:1	EC	For quotation
C3	343-830820N2577	1:1	IC 80 bar	For quotation



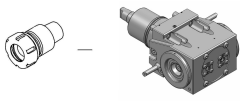
### Face drill/milling unit, L2=65

C3	C3-DNI-NA55A-E	1:1	EC	Standard
C3	C3-DNI-NA55A-I	1:1	IC 80 bar	Standard



### Face drill/milling unit, both sides, L2=55

C3	343-830820N2578	1:1	EC	For quotation
----	-----------------	-----	----	---------------



### Face drill/milling unit, both sides, L2=65

C3	343-830820N1648	1:1	EC	For quotation
----	-----------------	-----	----	---------------

# Turning applications

Tool holder	Insert/Tool	Insert
T-Max® P	 > CNMG	
CoroTurn® 107	 > CCMT	
T-Max® P	 > DNMG	
CoroTurn® 107	 > DCMT	
CoroTurn® 107	 > VBMT	
CoroThread® 266	 > 266	
CoroTurn® SL	 > CoroTurn® 107	 > TCMT
CoroTurn® 107		
CoroTurn® 107		
Silent Tools™	 > CoroTurn® 107	 > VBMT
Drill adaptor	 > CoroDrill® 870	 > Exchangeable drill tip
	 > CoroDrill® 881	 > Indexable drilling insert
	 > EasyFix	 > Boring bars
		 > Boring bars
		 > Boring bars

## Rotating applications

Tool holder	Insert/Collet/Tool	Insert
Coromant EH	 > CoroMill® 316	
	 > CoroMill® 390	 > R390 
	 > CoroMill® 490	 > 490R 
	 > CoroMill® 216	 > R216 
	 > CoroMill® 300	 > R300 
	 > CoroBore® 824	 > CXS 
	 > CoroBore® 825	 > TCMT 
CoroChuck™ 930	 > Cylindrical collet	 > CoroMill® Plura 
		 > CoroDrill® 860 
ER collet chuck	 > ER collet	 > CoroMill® Plura 
		 > CoroDrill® 860 
CoroMill® 390	 > R390	