

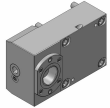
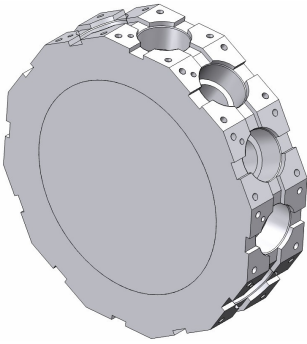
# Hwacheon VT 550, 650 MC

Toolholder Program



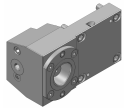
# VT 550, 650 MC

Coromant Capto® Program



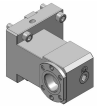
## OD clamping unit

C5	C5-TRE-BT75B	Standard
C5	C5-TLE-BT75B	Standard



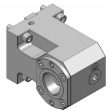
## OD clamping unit

C6	C6-TRE-BT75A	Standard
C6	C6-TLE-BT75A	Standard



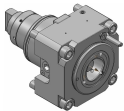
## Face and ID clamping unit

C5	343-830111C1175	For quotation
----	-----------------	---------------



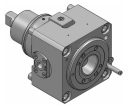
## Face and ID clamping unit

C6	343-830111C1332	For quotation
----	-----------------	---------------



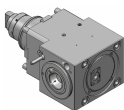
## OD drill/milling unit

C5	C5-DNE-BT75A-E	1:1	EC	Standard
C5	C5-DNE-BT75A-I	1:1	IC 80 bar	Standard



## OD drill/milling unit (special offer!)

C5	343-830820N1147	1:1	EC	For quotation
C5	343-830820N911	1:1	IC 30 bar	For quotation



## Face drill/milling unit, L2=110

C5	343-830820N2410	1:1	EC	For quotation
C5	343-830820N2411	1:1	IC 80 bar	For quotation

# Turning applications

Tool holder	Insert/Tool	Insert
T-Max® P	 > CNMG	
CoroTurn® 107	 > CCMT	
T-Max® P	 > DNMG	
CoroTurn® 107	 > DCMT	
CoroTurn® 107	 > VBMT	
CoroThread® 266	 > 266	
CoroTurn® SL	 > CoroTurn® 107	 > TCMT
CoroTurn® 107		
CoroTurn® 107		
Silent Tools™	 > CoroTurn® 107	 > VBMT
Drill adaptor	 > CoroDrill® 870	 > Exchangeable drill tip
	 > CoroDrill® 881	 > Indexable drilling insert
	 > EasyFix	 > Boring bars
		 > Boring bars
		 > Boring bars

## Rotating applications

Tool holder	Insert/Collet/Tool	Insert
Coromant EH	 > CoroMill® 316	
	 > CoroMill® 390	 > R390 
	 > CoroMill® 490	 > 490R 
	 > CoroMill® 216	 > R216 
	 > CoroMill® 300	 > R300 
	 > CoroBore® 824	 > CXS 
	 > CoroBore® 825	 > TCMT 
CoroChuck™ 930	 > Cylindrical collet	 > CoroMill® Plura 
		 > CoroDrill® 860 
ER collet chuck	 > ER collet	 > CoroMill® Plura 
		 > CoroDrill® 860 
CoroMill® 390	 > R390	