

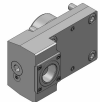
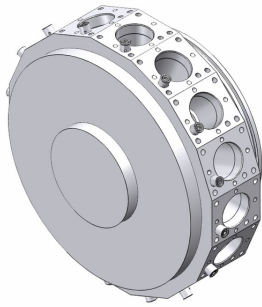
Okuma LT 2000 EX M/MY (16 station turret)

Toolholder Program



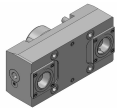
LT 2000 EX M/MY (16 station turret)

Coromant Capto® Program



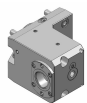
OD clamping unit

C4	C4-TRE-OK55A	Standard
C4	C4-TLE-OK55A	Standard



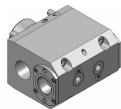
OD clamping unit, both sides

C4	C4-TRE-OK55A-DT	Standard
C4	C4-TLE-OK55A-DT	Standard



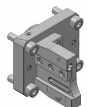
Face and ID clamping unit

C4	C4-TRI-OK55A	Standard
C4	C4-TLI-OK55A	Standard



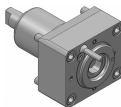
Face and ID clamping unit, both sides

C4	343-830111C940	For quotation
----	----------------	---------------



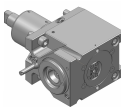
Cut-off holder, adjustable, IC

SH 26	APBR-OK55A-21-HP IC 80 bar	Standard
SH 26	APBL-OK55A-21-HP IC 80 bar	Standard



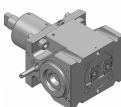
OD drill/milling unit

C3	C3-DNE-OK55A-E	1:1	EC	Standard
C3	C3-DNE-OK55A-I	1:1	IC 80 bar	Standard



Face drill/milling unit

C3	C3-DNI-OK55A-E	1:1	EC	Standard
C3	C3-DNI-OK55A-I	1:1	IC 80 bar	Standard



Face drill/milling unit, both sides

C3	343-830820N2312	1:1	EC	For quotation
----	-----------------	-----	----	---------------

Turning applications

Tool holder	Insert/Tool	Insert
T-Max® P	 > CNMG	
CoroTurn® 107	 > CCMT	
T-Max® P	 > DNMG	
CoroTurn® 107	 > DCMT	
CoroTurn® 107	 > VBMT	
CoroThread® 266	 > 266	
CoroTurn® SL	 > CoroTurn® 107	 > TCMT
CoroTurn® 107		
CoroTurn® 107		
Silent Tools™	 > CoroTurn® 107	 > VBMT
Drill adaptor	 > CoroDrill® 870	 > Exchangeable drill tip
	 > CoroDrill® 881	 > Indexable drilling insert
	 > EasyFix	 > Boring bars
		 > Boring bars
		 > Boring bars

Rotating applications

Tool holder	Insert/Collet/Tool	Insert
Coromant EH	 > CoroMill® 316	
	 > CoroMill® 390	 > R390 
	 > CoroMill® 490	 > 490R 
	 > CoroMill® 216	 > R216 
	 > CoroMill® 300	 > R300 
	 > CoroBore® 824	 > CXS 
	 > CoroBore® 825	 > TCMT 
CoroChuck™ 930	 > Cylindrical collet	 > CoroMill® Plura 
		 > CoroDrill® 860 
ER collet chuck	 > ER collet	 > CoroMill® Plura 
		 > CoroDrill® 860 
CoroMill® 390	 > R390	