

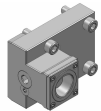
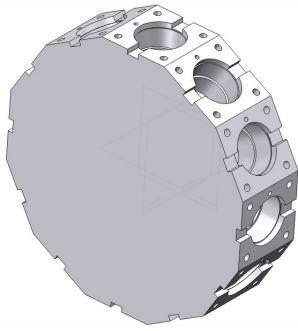
# Biglia BV210, BV315

Toolholder Program



# BV210, BV315

Coromant Capto® Program

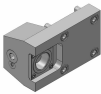


## OD clamping unit

C4	C4-TRE-BI55A
C4	C4-TLE-BI55A

Standard

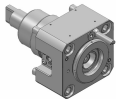
Standard



## OD clamping unit, short

C4	343-830111C1251
----	-----------------

For quotation

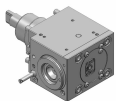


## OD drill/milling unit

C3	343-830820N1389 1:1	EC
C3	343-830820N1968 1:1	IC 80 bar

For quotation

For quotation



## Face drill/milling unit

C3	343-830820N2816 1:1	EC
C3	343-830820N2817 1:1	IC 80 bar

For quotation

For quotation

# Turning applications

Tool holder	Insert/Tool	Insert
T-Max® P	 > CNMG	
CoroTurn® 107	 > CCMT	
T-Max® P	 > DNMG	
CoroTurn® 107	 > DCMT	
CoroTurn® 107	 > VBMT	
CoroThread® 266	 > 266	
CoroTurn® SL	 > CoroTurn® 107	 > TCMT
CoroTurn® 107		
CoroTurn® 107		
Silent Tools™	 > CoroTurn® 107	 > VBMT
Drill adaptor	 > CoroDrill® 870	 > Exchangeable drill tip
	 > CoroDrill® 881	 > Indexable drilling insert
	 > EasyFix	 > Boring bars
		 > Boring bars
		 > Boring bars

## Rotating applications

Tool holder	Insert/Collet/Tool	Insert
Coromant EH	 > CoroMill® 316	
	 > CoroMill® 390	 > R390 
	 > CoroMill® 490	 > 490R 
	 > CoroMill® 216	 > R216 
	 > CoroMill® 300	 > R300 
	 > CoroBore® 824	 > CXS 
	 > CoroBore® 825	 > TCMT 
CoroChuck™ 930	 > Cylindrical collet	 > CoroMill® Plura 
		 > CoroDrill® 860 
ER collet chuck	 > ER collet	 > CoroMill® Plura 
		 > CoroDrill® 860 
CoroMill® 390	 > R390	