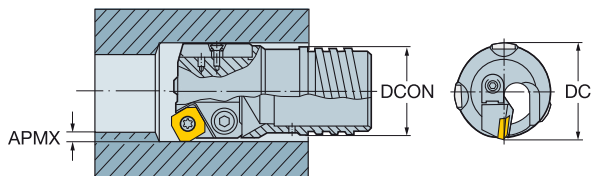
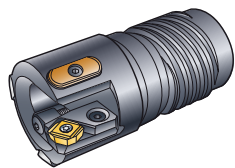
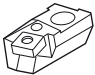
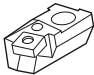


T-MAX® 424.31F

Single indexable insert design - close and normal tolerances



CZC _{MS}	Diameter range, mm, inch				Cartridge 	Inserts		Cartridge 	Inserts		Support pad set No.	Pressure pad set No.		DCON	DCON"			
	DC Min	DC Max	DC Min"	DC Max"		APMX	APMX"		□	APMX		APMX"	□					
10	43.01	46.99	1.693	1.850	R430.24-1118-06	4.5	.177	06	R430.24-1018-09	6.0	.236	09	430.21-10 D43.0	2	5636 020-011	1	39	1.535
11	47.00	51.99	1.851	2.047	R430.24-1118-06	4.5	.177	06	R430.24-1018-09	6.0	.236	09	430.21-10 D47.0	2	5636 020-011	1	43	1.693
12	47.00	51.99	1.851	2.047	R430.24-1118-06	4.5	.177	06	R430.24-1018-09	6.0	.236	09	430.21-10 D47.0	2	5636 020-011	1	43	1.693
12	52.00	57.99	2.048	2.283	R430.24-1118-06	4.5	.177	06	R430.24-1018-09	6.0	.236	09	430.21-10 D52.0	2	5636 020-011	1	47	1.850
13	52.00	57.99	2.048	2.283	R430.24-1118-06	4.5	.177	06	R430.24-1018-09	6.0	.236	09	430.21-10 D52.0	2	5636 020-011	1	47	1.850
13	58.00	65.00	2.284	2.558	R430.24-1118-06	4.5	.177	06	R430.24-1018-09	6.0	.236	09	430.21-10 D58.0	2	5636 020-011	1	51	2.008
14	65.00	69.99	2.559	2.756	R430.24-1118-06	4.5	.177	06	R430.24-1018-09	6.0	.236	09	430.21-12 D65.0	2	420.37-410-01	3	52	2.047
15	70.00	74.99	2.757	2.952	R430.24-1118-06	4.5	.177	06	R430.24-1018-09	6.0	.236	09	430.21-12 D70.0	2	420.37-410-01	3	58	2.283
16	70.00	74.99	2.757	2.952	R430.24-1118-06	4.5	.177	06	R430.24-1018-09	6.0	.236	09	430.21-12 D70.0	2	420.37-410-01	3	58	2.283
16	75.00	79.99	2.953	3.149	R430.24-1118-06	4.5	.177	06	R430.24-1018-09	6.0	.236	09	430.21-12 D75.0	2	420.37-410-01	3	63	2.480
17	80.00	84.99	3.150	3.346	R430.24-1118-06	4.5	.177	06	R430.24-1018-09	6.0	.236	09	430.21-12 D80.0	2	420.37-415-01	3	70	2.756
17	85.00	89.99	3.347	3.543	R430.24-1118-06	4.5	.177	06	R430.24-1018-09	6.0	.236	09	430.21-12 D85.0	2	420.37-415-01	3	70	2.756
18	85.00	89.99	3.347	3.543	R430.24-1118-06	4.5	.177	06	R430.24-1018-09	6.0	.236	09	430.21-12 D85.0	2	420.37-415-01	3	70	2.756
18	90.00	94.99	3.544	3.740	R430.24-1118-06	4.5	.177	06	R430.24-1018-09	6.0	.236	09	430.21-16 D90.0	2	420.37-510-01	3	77	3.031
18	95.00	99.99	3.741	3.936	R430.24-1118-06	4.5	.177	06	R430.24-1018-09	6.0	.236	09	430.21-16 D95.0	2	420.37-510-01	3	77	3.031
19	100.00	104.99	3.937	4.133	R430.24-1118-06	4.5	.177	06	R430.24-1018-09	6.0	.236	09	430.21-16 D100.0	2	420.37-510-01	3	89	3.504
19	105.00	109.99	4.134	4.330	R430.24-1118-06	4.5	.177	06	R430.24-1018-09	6.0	.236	09	430.21-16 D105.0	2	420.37-510-01	3	89	3.504
19	110.00	114.99	4.331	4.527	R430.24-1118-06	4.5	.177	06	R430.24-1018-09	6.0	.236	09	430.21-16 D110.0	2	420.37-510-01	3	101	3.976
20	110.00	114.99	4.331	4.527	R430.24-1118-06	4.5	.177	06	R430.24-1018-09	6.0	.236	09	430.21-16 D110.0	2	420.37-510-01	3	101	3.976
20	115.00	119.99	4.528	4.724	R430.24-1118-06	4.5	.177	06	R430.24-1018-09	6.0	.236	09	430.21-16 D115.0	2	420.37-510-01	3	101	3.976
20	120.00	124.99	4.725	4.921	R430.24-1118-06	4.5	.177	06	R430.24-1018-09	6.0	.236	09	430.21-16 D120.0	2	420.37-510-01	3	113	4.449
21	120.00	124.99	4.725	4.921	R430.24-1118-06	4.5	.177	06	R430.24-1018-09	6.0	.236	09	430.21-16 D120.0	2	420.37-510-01	3	113	4.449

When ordering these counterboring heads, the following must also be stated:
 - Cartridges to be used - cartridge for close tolerances or normal tolerances