

STANLEY® FATMAX XTREME® TWIN BLADE RETRACTABLE KNIFE



- Two knives in one – new twin blade design allows the user to alternate between two blades without carrying more than one knife.
- InstantChange™ feature allows the user to replace dull blades in seconds.
- Easy access blade storage holds up to 9 blades for fast and easy blade changes.
- Safety mechanism - Interlocking blade sliders ensure only one blade is extended at a time.
- Rubber comfort grip minimizes fatigue and reduces slippage.
- Knife includes 2 utility and 2 hook blades.
- Works with most standard utility blades.



Product #	Length	Body Color
10-789	6-3/4 in (171 mm)	Gray

STANLEY® FATMAX® RETRACTABLE UTILITY KNIFE

- Designed for repetitive heavy-duty cutting applications.
- Push button for instant blade change - no tools required.
- Blade storage holds up to 5 blades.
- Thermoplastic Rubber (TPR) soft touch panels and grips for better control and fewer slips.
- Thumb pad and ergonomically designed cutting angle for more comfortable use.
- Supplied with “5” FatMax® blades.
- Works with most standard utility blades.



Product #	Length	Body Color
10-778	6-3/4 in (171 mm)	Yellow/Black

STANLEY® INSTANTCHANGE™ RETRACTABLE BLADE UTILITY KNIFE

- Durable, all-metal knife body construction.
- Quick one-button blade change - no tools required.
- Thumb pad and ergonomically designed cutting angle for more comfortable use.
- Interlocking nose design helps secure blade and helps prevent body separation.
- Integrated string cutter when blade is retracted.
- Swing-out blade storage for easy blade access.
- Blades included (11-921): 3.
- Retractable Blade Positions: 3.
- Works with most standard utility blades.



Product #	Length	Body Color
10-788	6-1/2 in (165 mm)	Gray/Black



STANLEY® QUICKCHANGE™ RETRACTABLE BLADE UTILITY KNIFE

- Durable, all-metal knife body construction.
- Quick one-button blade change - no tools required.
- Interlocking nose design helps secure blade and helps prevent body separation.
- Integrated string cutter when blade is retracted.
- Comes with hang-hole for adding a wrist strap or lanyard.
- Swing-out blade storage for easy blade access.
- Blades Included (11-921): 3.
- Retractable Blade Positions: 3.
- Works with most standard utility blades.



Push Button Blade Change.
No Tools Required.



Blade Storage Area.



Product #	Length	Body Color
10-499	6-1/2 in (165 mm)	Gray

STANLEY® SWIVEL-LOCK® RETRACTABLE BLADE UTILITY KNIFE

- Durable, all-metal knife body construction.
- Knife body swivels open for quick blade change - no tools required.
- Magnetic nose holds blade in place for stability during blade change.
- Interlocking nose design helps secure blade and helps prevent body separation.
- Blades Included (11-921): 3.
- Retractable Blade Positions: 3.
- Works with most standard utility blades.



Swivels Open for
Quick Blade Change.
No Tools Required.



Interlocking
Nose Feature.



Product #	Length	Body Color
10-989	7 in (178 mm)	Yellow

STANLEY® ERGONOMIC RETRACTABLE BLADE UTILITY KNIFE

- No tools required – thumb screw stays attached to knife and allows for easy blade change.
- Durable, simple and comfortable shape.
- Narrow nose ideal for accurate cutting applications.
- Robust all-metal construction.
- Comfortable thumb rest.
- Blade storage in handle.
- Works with most standard utility blades.

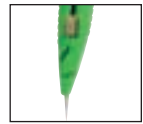


Product #	Length	Body Color
10-707	6-3/8 in (162 mm)	Yellow

STANLEY® RETRACTABLE BLADE KNIVES

- Patented interlocking nose to hold blade securely.
- Three-position, retractable blade.
- Contoured handle with diagonal ribs for a slip-resistant grip.
- Blade storage in handle.
- Works with most standard utility blades.

Interlocking
Nose Feature.



Product #	Length	Body Color
10-079	6 in (152 mm)	Gray
10-179	6 in (152 mm)	Green Hi-Vis

STANLEY® CLASSIC 99® RETRACTABLE BLADE UTILITY KNIFE

- Durable, all-metal knife body construction.
- Machine screw firmly holds knife body together - Screwdriver required for blade change.
- Interlocking nose design helps secure blade and helps prevent body separation.
- Blades included (11-921): 3.
- Retractable Blade Positions: 3.
- Works with most standard utility blades.



Interlocking Nose Feature.



Product #	Length	Body Color
10-099	6 in (152 mm)	Gray
10-099U	6 in (152 mm)	Unpainted

STANLEY® HOMEOWNER'S RETRACTABLE BLADE UTILITY KNIFE

- Lightweight, versatile plastic knife body construction.
- For light duty use only.
- Machine screw firmly holds knife body together - Screwdriver required for blade change.
- Comes with hang-hole for adding a wrist strap or lanyard
- Blades Included (11-921): 1.
- Retractable Blade Positions: 3.
- Works with most standard utility blades.



Overlapping Nose
Secures Blade.

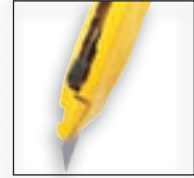


Product #	Length	Body Color
10-175	6 in (152 mm)	Gray



STANLEY® DYNAGRIP® RETRACTABLE BLADE UTILITY KNIFE

- Durable, all-metal knife body construction.
- Machine screw firmly holds knife body together - Screwdriver required for blade change.
- Contoured handle with Bi-Material grip for slip-resistance.
- Interlocking nose design helps secure blade and helps prevent body separation.
- Comes with hang-hole for adding a wrist strap or lanyard.
- Blades Included (11-921): 3.
- Retractable Blade Positions: 3.
- Works with most standard utility blades.



Interlocking Nose Feature.

Product #	Length	Body Color
10-779	6 in (152 mm)	Yellow/Black



STANLEY® HANDY RETRACTABLE UTILITY KNIFE

- Metal body with diamond pattern for better grip.
- Blade storage in handle.
- Compact size.
- Patented interlocking nose to hold blade securely.
- Works with most standard utility blades.

Product #	Length	Body Color
10-016	5 in (122 mm)	Gray



STANLEY® FATMAX™ FIXED BLADE UTILITY KNIFE



- Specially designed for repetitive cutting applications.
- Magnetic nose holds blade in place for stability during blade change.
- Blade clamp to reduce blade wobble for added control.
- Steel wear plate for longer life and reduced wear on the nose of the knife.
- Blade storage holds up to 5 blades.
- Thermoplastic Rubber (TPR) soft touch panels and grips for better control and fewer slips.
- Thumb pad and ergonomically designed cutting angle for more comfortable use.
- Supplied with "5" FatMax® blades.
- Works with most standard utility blades, except 11-931.

Product #	Length	Body Color
10-780	5-3/4 in (146 mm)	Yellow/Black



STANLEY® SWIVEL-LOCK® FIXED BLADE UTILITY KNIFE

- Durable, all-metal knife body construction.
- Knife body swivels open for quick blade change - no tools required.
- Interlocking nose design helps secure blade and helps prevent body separation.
- Blades Included (11-921): 3.
- Fixed Blade Positions: 1.
- Works with most standard utility blades, except 11-931.



Interlocking Nose Feature.



Swivels Open for Quick Blade Change. No Tools Required.

Product #	Length	Body Color
10-399	6 in (152 mm)	Gray



STANLEY® ERGONOMIC FIXED BLADE UTILITY KNIFE

- No tools required – thumb screw stays attached to knife and allows for easy blade change.
- Durable, simple and comfortable shape.
- Narrow nose ideal for accurate cutting applications.
- Blade storage in handle.
- Robust all-metal construction.
- Comfortable thumb rest.
- Works with most standard utility blades, except 11-931.

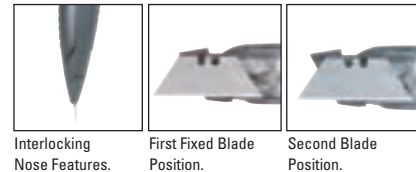
Product #	Length	Body Color
10-705	5-1/2 in (140 mm)	Yellow



STANLEY® 299® FIXED BLADE UTILITY KNIFE

- Durable, all-metal knife body construction.
- Machine screw firmly holds knife body together - Screwdriver required for blade change.
- Contoured handle and textured, die-cast body for slip-resistance.
- Interlocking nose design helps secure blade and helps prevent body separation.
- Comes with hang-hole for adding a wrist strap or lanyard.
- Blades Included (11-921): 1.
- Fixed Blade Positions: 2.
- Works with most standard utility blades, except 11-931.

Product #	Length	Body Color
10-299	5-1/2 in (140 mm)	Gray



STANLEY® CLASSIC 199® FIXED BLADE UTILITY KNIFE - ALUMINUM BODY

- Durable, all-metal aluminum knife body construction.
- Machine screw firmly holds knife body together - Screwdriver required for blade change.
- Textured, die-cast body for better slip-resistance.
- Comes with hang-hole for adding a wrist strap or lanyard.
- Fixed Blade Positions: 2.
- Works with most standard utility blades, except 11-931.

Product #	Length	Body Color
10-199B	5-1/2 in (140 mm)	Gray



STANLEY® CLASSIC 199® FIXED BLADE UTILITY KNIFE - ZINC BODY

- Durable, all-metal zinc knife body construction.
- Machine screw firmly holds knife body together - Screwdriver required for blade change.
- Textured, die-cast body for better slip-resistance.
- Comes with hang-hole for adding a wrist strap or lanyard.
- Blades included (11-921): 3.
- Fixed Blade Positions: 1.
- Works with most standard utility blades, except 11-931.

Product #	Length	Body Color
10-209	5-1/2 in (140 mm)	Gray



Not intended for use in industrial manufacturing applications.

STANLEY® FOLDING FIXED BLADE UTILITY KNIFE

- Durable aluminum handle with belt clip.
- Quick change blade mechanism.
- One-hand opening operation.
- Folds to convenient carrying size.
- Works with most standard utility blades, except 11-931.



Product #	Length	Height	Width	Weight	Body Color
10-036	4.25 in (107 mm)	4.38 in (111 mm)	0.63 in (16 mm)	0.33 lbs	Gold

STANLEY® RETRACTABLE BLADE CARPET KNIFE

- Heavy-duty all-metal knife body construction.
- Knife body swivels open for quick blade change - no tools required.
- Retractable blade controls depth of cut.
- Carpet Blades Included (11-525): 3.



Product #	Blade Width	Length	Handle Length	Blade Storage Capacity	Fits Blades
10-525	3/4 in (19 mm)	6-1/2 in (165 mm)	6-1/2 in (165 mm)	10 regular duty 0.015" blades	11-525 & 11-530

STANLEY® FATMAX® HOOK KNIFE

- Taper ground cutlery steel blade permanently fastened to handle.
- Ergonomically designed non-slip grip handle.
- Cuts and trims vinyl or linoleum floor covering, roofing material, and similar materials.



Product #	Blade Length	Handle Length	Overall Length
10-510	2-5/8 in (67 mm)	5-1/2 in (140 mm)	8 in (203 mm)

STANLEY® LINOLEUM FLOORING KNIFE

- Taper ground cutlery steel blade permanently fastened to handle.
- Comfortable hardwood handle.
- Cuts and trims vinyl or linoleum floor covering, roofing material, and similar materials.



Product #	Blade Length	Handle Length	Overall Length
10-509	3 in (76 mm)	4-1/2 in (114 mm)	7-1/2 in (191 mm)





STANLEY® SPORTUTILITY™ OUTDOORSMAN KNIFE

- Durable, all-metal knife body construction.
- Quick one-button blade change - no tools required.
- Thumb stud and liner lock for one-handed 'sport' blade open / close.
- 3-1/2" Partial serrated "sport" blade for cutting rope / twine.
- Built in safety feature prevents both blades from simultaneous presentation / use.
- Bi-Material handles for comfort and slip-resistance.
- Interlocking nose design helps secure blade and helps prevent body separation.
- Comes with nylon/sheath pouch for holding blade dispenser.
- Blades Included (11-921): 10.
- Retractable Blade Positions: 3.
- Works with most standard utility blades, except 11-931.



Product #	Blade Length	Overall Length	Body Color
10-804	3-1/2 in (90 mm)	6-1/2 in (165 mm)	Gray/Black

STANLEY® FOLDING UTILITY KNIFE

- Foldable, compact design fits easily into a pocket.
- Quick change fixed blade - thumb stud for easy release.
- One-hand open and close using the push lever handle.
- Aluminum design, lightweight and durable.
- Stainless steel belt clip.
- Works with most standard utility blades, except 11-931.



Product #	Length	Body Color
10-855	4-1/4 in (108 mm)	Black

STANLEY® QUICKSLIDE™ UTILITY KNIFE

- Durable, all-metal knife body construction.
- Quick change blade tab - no tools required.
- True one-handed open/close.
- Stainless steel belt clip.
- Blades included (11-921): 1.
- Retractable Blade Positions: 1.
- Works with most standard utility blades, except 11-931.



Quick Change Blade Tab.
No Tools Required.



Product #	Length	Body Color
10-810	5-1/4 in (133 mm)	Gray/Black

STANLEY® QUICKSLIDE™ 2 UTILITY KNIFE

- Durable all-metal, die-cast zinc construction.
- Quick change blade tab - no tools required.
- True one-handed open/close.
- Stainless steel belt clip.
- Top mounted, zinc slider button for durability.
- Compact and ergonomically designed.
- Works with most standard utility blades, except 11-931.



Product #	Length	Body Color
10-812	4-5/16 in (109 mm)	Gray

STANLEY® QUICKSLIDE™ SPORT UTILITY KNIFE

- Standard utility blade for multipurpose cutting.
- 3" / 75mm stainless steel serrated sport blade for those tough cutting jobs.
- Patented Interlock® mechanism allows only one blade to be exposed at a time.
- Spine lock button that locks and releases the sport blade for safety.
- Interlock® nose designed to help prevent spreading.
- Utility knife features a quick "no tools" blade change.
- Thumb slider for easy operation.
- Cast zinc body for increased durability.
- Uses any standard Stanley® utility or hook blade.
- Works with most standard utility blades, except 11-931.



Product #	Length	Length with Blades Extended	Body Color
10-813	4-3/4 in (121 mm)	9 in (229 mm)	Gray

STANLEY® POCKET KNIFE

- Powder-coated, epoxy handle.
- Blade folds into handle for safe storage.
- Replaceable stainless-steel blade.
- Safety blade lock.
- Blades Included (11-040): 1.



Product #	Length	Body Color
10-049	4-1/4 in (108 mm)	Gray

STANLEY® SELF-RETRACTING SAFETY BLADE UTILITY KNIVES

- Durable, all-metal knife body construction.
- Machine screw firmly holds knife body together - Screwdriver required for blade change.
- Contoured handle and textured, die-cast body for slip-resistance.
- Interlocking nose design helps secure blade and helps prevent body separation.
- Comes with hang-hole for adding a wrist strap or lanyard.
- Auto-retracting blade: spring-loaded. Retracts when slide button is released.
- Blades included (11-987): 1.
- Works with most standard utility blades.



Auto Retracting Blade Feature.



Interlocking Nose Feature.



Product #	Length	Body Color
10-189C	5-7/8 in (149 mm)	Orange
10-189P	5-7/8 in (149 mm)	Unpainted

STANLEY® SAFETY KNIFE

- Heavy-duty spring activated blade automatically retracts the instant the blade loses contact with the cutting surface.
- Accepts both Stanley® and OLFA® safety blades (round tip and regular).
- Ergonomic slip-resistant handle.
- Chemical resistant handle.
- Durable, smooth stainless steel barrel.
- Blades Included (11-921): 1
- Replacement blades: 11-921.



Product #	Blade Length	Overall Length	Body Material	Body Color
STHT10193	2-29/64 in (61.3 mm)	6-1/2 (165 mm)	Zinc	Yellow/Black

OLFA® is a registered trademark of OLFA® Corporation.



STANLEY® HOBBY KNIFE

- Available with a strong, yet lightweight aluminum body.
- For light and medium duty precision work.
- Positive metal barrel blade locks.
- Works with standard hobby and craft blades.
- Blades included (11-401): 1.

Product #	Length
10-401	5-1/8 in (142 mm)



STANLEY® 12-IN-1 MULTI-TOOL WITH HOLSTER

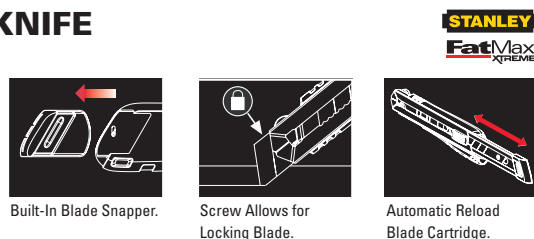
- Stainless steel construction.
- High-quality nylon holster.

Product #	Length	Contents
84-519K	6-1/2 in (165 mm)	(1) Long Nose Pliers (1) Curve Jaw Pliers (1) Wire Cutter (1) Saw (1) ⊕ Phillips® Screwdriver (3) ⊖ 1/4, 5/16, 1/8 in Standard Screwdrivers (1) Small knife (1) Large knife (1) Bottle Opener (1) File



STANLEY® FATMAX XTREME® SNAP-OFF KNIFE

- Heavy-duty all-metal knife body construction.
- Rigid stainless steel barrel provides smooth action and corrosion resistance.
- Smooth slider mechanism features an audible “click” and is self-locking for security.
- Safety machine screw allows for locking blade in place for added blade security and heavy-duty applications.
- Removable blade snapper included in cap of knife.
- Blade cartridge automatically slides new blade into position after old blade is removed.
- Comes with hang-hole for adding a wrist strap or lanyard.



Product #	Size	Length	Body Color	Points per Blade	Blades Included
10-817	25 mm (1 in)	8 in (203 mm)	Bright Aluminum	7	(4) 11-325

STANLEY® FATMAX® SNAP-OFF KNIVES

- Stainless-steel barrel is durable and rust resistant.
- Comfortable Bi-Material slider with soft grip.
- Removable blade snapper for removal of a worn segment.
- Thumb dial clamps down on blade to minimize blade movement for control.
- Instant blade release functionality for quick blade changes.



Product #	Size	Length	Body Color	Points per Blade	Blades Included
10-481	18 mm (0.709 in)	7 in (178 mm)	Yellow/Black	8	(6) 11-718
10-486	25 mm (1 in)	7 in (178 mm)	Yellow/Black	7	(4) 11-725

STANLEY® FATMAX® SNAP-OFF KNIFE



- Heavy-duty all-metal knife body construction.
- Rigid stainless steel barrel provides smooth action and corrosion resistance.
- Smooth slider mechanism features an audible “click” and is self-locking for security.
- Removable blade snapper included in cap of knife.



Product #	Size	Length	Body Color	Points per Blade	Blades Included
10-421	18 mm (0.709 in)	6-1/4 in (159 mm)	Gray	8	(1) 11-301

STANLEY® DYNAGRIP® SNAP-OFF KNIFE

- High impact, yellow ABS body with soft-grip panels.
- Safety machine screw clamp secures blade in place for added blade security.



Product #	Size	Length	Body Color	Points per Blade	Blade Included
10-425	25 mm (1 in)	7 in (178 mm)	Yellow/Black	7	(1) 11-325

STANLEY® QUICK-POINT™ SNAP-OFF KNIVES

- High impact ABS construction.
- Smooth slider mechanism features an audible “click” and is self-locking for security.
- Removable blade snapper included in cap of knife.



Product #	Size	Length	Body Color	Points per Blade	Blade Included
10-150	9 mm (0.354 in)	5-1/8 in (206 mm)	Yellow/Black	13	(1) 11-300
10-151	18 mm (0.709 in)	6-1/2 in (165 mm)	Yellow/Black	8	(1) 11-301

STANLEY® QUICK-POINT™ STANDARD SNAP-OFF KNIFE

- High impact ABS construction.
- Rigid stainless steel barrel provides smooth action and corrosion resistance.
- Smooth slider mechanism features an audible “click” and is self-locking for security.
- Removable blade snapper included in cap of knife.
- Comes with hang-hole for adding a wrist strap or lanyard.



Product #	Size	Length	Body Color	Points per Blade	Blade Included
10-280	18 mm (0.709 in)	6-3/4 in (171 mm)	Yellow/Black	8	2 (11-301)





STANLEY® INSTANTCHANGE™ SNAP-OFF KNIVES

- Load blades through traditional method or through front loading quick change function.
- Dial wheel functions as locking mechanism during use and blade release mechanism when changing blades.
- Comfortable one-piece elastomer plastic body.
- Durable, smooth stainless steel barrel.
- Chemical resistant handle.



Product #	Size	Length	Body Color	Points per Blade	Blade Included
STHT10186	18 mm (0.709 in)	6-19/64 in (160 mm)	Yellow/Black	8	(1) 11-301
STHT10187	25 mm (1 in)	7-1/2 in (191 mm)	Yellow/Black	7	(1) 11-325

STANLEY® AUTO LOCKING SNAP-OFF KNIFE WITH PRY PICK

- Automatic blade lock.
- Angled back for easier blade loading.
- Polypropylene body with slip-resistant over molded rubber grip.
- Chemical resistant handle.
- Durable, smooth stainless steel barrel.
- Hard metal pry pick.



Product #	Size	Length	Body Color	Points per Blade	Blade Included
STHT10191	18 mm (0.709 in)	7-1/8 in (181 mm)	Yellow/Silver/Black	8	(1) 11-301

STANLEY® QUICK-POINT™ SNAP-OFF KNIFE

- Light-duty, retractable cutter with Quick-Point™ snap-off blades.
- Blade sections snap off, providing a fresh, sharp cutting point.
- Hang hole for storage or lanyard.



Product #	Size	Length	Body Color	Points per Blade	Blade Included
10-143P	18 mm (0.709 in)	6 in (152 mm)	Yellow/Black	8	(1) 11-301

STANLEY® QUICKCHANGE™ ROTARY CUTTER

- Cuts through vinyl, paper, foamcore and more.
- Accepts both Stanley® and OLFA® 45 mm rotary blades.
- Heavy-duty blade made of high quality tool steel.
- Designed for both left and right handed use.
- Polypropylene handle with slip-resistant over molded rubber grip.



Product #	Blade Diameter	Overall Length	Blade Thickness	Color	Blade Included
STHT10194	1-3/4 in (44 mm)	6-5/8 in (168 mm)	0.3 in (7.6 mm)	Yellow/Gray	(1) STHT11942

OLFA® is a registered trademark of OLFA® Corporation.

STANLEY® QUICKCHANGE™ ROTARY CUTTER REPLACEMENT BLADE

- Heavy-duty blade made of high quality tool steel.

Product #	Blade Diameter	Blade Thickness
STHT11942	1-3/4 in (44 mm)	0.3 in (7.6 mm)



STANLEY® CARBIDE™ BLADES

- Blade stays sharper 5X* longer.
 - Steel body allows flexibility to help prevent breakage.
 - Laser deposited carbide lines the blade edge delivering a long lasting blade.
- *Blade stays sharper 5X longer than traditional competitive blades.



Product #	Blades per Pack	Blade Length	Blade Thickness
11-800	5	2-13/32 in (61 mm)	1/40 in (0.635 mm)
11-800T	10	2-13/32 in (61 mm)	1/40 in (0.635 mm)
11-800L	50 with Dispenser	2-13/32 in (61 mm)	1/40 in (0.635 mm)

STANLEY® FATMAX® BLADES



- The precision grinding of the cutting bevel angles and the improved honing on cutting edge angles make this blade - up to +35% sharper*.
 - Specially heat-treated for a more flexible blade - up to +20% stronger*.
 - Induction hardened edge - up to +75% longer cutting life*.
 - Versatile cutting applications - drywall, carpet, roofing felt, house wrap, tar paper, insulation.
- *Based on average values compared with Stanley® 1992® blades.



Product #	Blades per Pack	Length	Blade Thickness
11-700	3	2-7/16 in (62 mm)	0.024 in (0.61 mm)
11-700T	10	2-7/16 in (62 mm)	0.024 in (0.61 mm)
11-700A	100	2-7/16 in (62 mm)	0.024 in (0.61 mm)

STANLEY® DRYWALL ASB UTILITY BLADES

- Edge is engineered to easily cut abrasive drywall material.
 - Blade made of high carbon steel.
 - S3 technology double hardens the blade edge for increased* cutting life.
 - 100% longer life on average compared to Stanley® 11-921 Heavy-Duty Blade, resulting in far fewer blade changes.
 - Cuts and scores drywall, ceiling tile, wallboard and similar materials.
 - "DRYWALL" call-out is laser etched on blade to help prevent mixing with standard blades.
- *Based on average values compared with Stanley® 1992® blades.



Product #	Blades per Pack	Length	Blade Thickness
11-937	3	2-3/8 in (60 mm)	1/40 in (62 mm)
11-937L	50 with Dispenser	2-3/8 in (60 mm)	1/40 in (62 mm)



STANLEY® EXTRA HEAVY-DUTY UTILITY BLADES

- Blade made of high carbon steel.
- Precision honed edge.
- Cuts thick, dense materials.
- Designed for use in fixed blade knives only.



Product #	Blades per Pack	Length	Blade Thickness
11-931	5	2-3/8 in (60.32 mm)	0.035 in (0.889 mm)
11-931D	70 with Dispenser	2-3/8 in (60.32 mm)	0.035 in (0.889 mm)
11-931A (Bulk)	10	2-3/8 in (60.32 mm)	0.035 in (0.889 mm)

STANLEY® HEAVY-DUTY UTILITY BLADES

- Blade made of high carbon steel.
- Precision honed edge.
- Blade is made for general purpose cutting.
- Fits most standard utility knives.



Product #	Blades per Pack	Length	Blade Thickness
11-921	5	2-7/16 in (62 mm)	0.024 in (0.061 mm)
11-921T	10 with Dispenser	2-7/16 in (62 mm)	0.024 in (0.061 mm)
11-921L	50 with Dispenser	2-7/16 in (62 mm)	0.024 in (0.061 mm)
11-921A	100 with Dispenser	2-7/16 in (62 mm)	0.024 in (0.061 mm)
11-921B (Bulk)	400	2-7/16 in (62 mm)	0.024 in (0.061 mm)

STANLEY® ROUND POINT UTILITY BLADES

- Rounded edges help reduce risk of accidental cuts.
- Blade is used in applications where safety is a concern and for preventing damage to carton contents when opening boxes.
- Blade made of high carbon steel.
- Fits most standard utility knives.



Product #	Blades per Pack	Length	Blade Thickness
11-987	5	2-3/16 in (56 mm)	0.024 in (0.61 mm)
11-988	100 with Dispenser	2-3/16 in (56 mm)	0.024 in (0.61 mm)

STANLEY® REGULAR DUTY UTILITY BLADES

- Blade made of high carbon steel.
- Precision honed edge.
- Blade is made for light sheet materials, paper, and cardboard.
- Fits most standard utility knives.



Product #	Blades per Pack	Length	Blade Thickness
11-911	5	2-7/16 in (62 mm)	1/40 in (0.635 mm)
11-911A	100 with Dispenser	2-7/16 in (62 mm)	1/40 in (0.635 mm)



STANLEY® MITEY-KNIFE® BLADE

- Blade made of high carbon steel.
- Precision honed edge.
- Blade fits Mighty-Knife® products.



Product #	Blades per Pack	Length	Blade Thickness
11-031	3	1-1/8 in (29 mm)	0.017 in (0.432 mm)

STANLEY® ROOFING ASB HOOK UTILITY BLADES

- Edge is engineered to withstand the rigors of cutting today's heavier and thicker roofing materials.
- 75% stronger than Stanley® 11-983 Hook Blade, resulting in fewer blade changes.
- Cuts roofing shingles, felt paper, Tyvek®, foam board, insulation, shingles and other building materials.
- Designed for use in fixed blade knives only.
- "ROOF" callout is laser etched on blade to prevent accidental mixing with standard blades.
- Blade made of high carbon steel.



Product #	Blades per Pack	Length	Blade Thickness
11-939	5	1-7/8 in (48 mm)	0.032 in (0.83 mm)
11-939A	70 with Dispenser	1-7/8 in (48 mm)	0.032 in (0.83 mm)

STANLEY® LARGE HOOK BLADES

- Blade made of high carbon steel.
- Blade shape helps prevent damage to surface beneath the material being cut.
- Blade is used for cutting and trimming roofing materials, linoleum, carpet, fabric and sheet materials.



Product #	Blades per Pack	Length	Blade Thickness
11-983	5	1-7/8 in (48 mm)	0.024 in (0.61 mm)
11-983L	50 with Dispenser	1-7/8 in (48 mm)	0.024 in (0.61 mm)
11-983A	100 with Dispenser	1-7/8 in (48 mm)	0.024 in (0.61 mm)
11-984 (Bulk)	100	1-7/8 in (48 mm)	0.024 in (0.61 mm)

STANLEY® REGULAR HOOK BLADES

- Blade shape helps prevent damage to surface beneath the material being cut.
- Blade is used for cutting and trimming roofing materials, linoleum, carpet, fabric and sheet materials.
- Blade made of high carbon steel.
- Fits most standard utility knives.



Product #	Blades per Pack	Blade Length	Blade Thickness
11-961	5	2-1/16 in (52 mm)	0.024 in (0.61 mm)
11-961A	100 with Dispenser	2-1/16 in (52 mm)	0.024 in (0.61 mm)

Tyvek® is a registered trademark of E. I. du Pont de Nemours and Company or its affiliates.

STANLEY® CARPET BLADES

- High carbon steel blade with double cutting edge.
- Fits Stanley® and most other carpet knives.



Product #	Type	Blades per Pack	Blade Length	Blade Thickness
11-525	Standard	5	2-1/4 in (57 mm)	0.015 in (0.380 mm)
11-530 (Bulk)	Heavy-duty	100	2-1/4 in (57 mm)	0.017 in (0.432 mm)

STANLEY® FATMAX® SNAP-OFF BLADES



18 MM

- Induction hardened for 25% longer life*.
- Ideal for cutting drywall, styrofoam, insulation, foam backed carpet, reinforced carpet, linoleum, cork, tar paper, house wrap.
- Fits all Stanley® 18 mm snap-off knives.
- Fits Olfa® L-series snap-off knives.

25 MM

- Induction hardened for 50% longer life*.
- Ideal for cutting drywall, styrofoam, insulation, foam backed carpet, reinforced carpet, linoleum, cork, tar paper, house wrap.
- Fits all Stanley® 25 mm snap-off knives.
- Fits Olfa® H-series snap-off knives.

*Based on average values in comparison to standard Stanley® snap-off blades.



Product #	Size	Blades per Pack	Length	Blade Thickness	Points per Blade
11-718	18 mm (0.709 in)	5	4-1/4 in (108 mm)	1/50 in (0.508 mm)	8
11-718T	18 mm (0.709 in)	10	4-1/4 in (108 mm)	1/50 in (0.508 mm)	8
11-718L	18 mm (0.709 in)	20	4-1/4 in (108 mm)	1/50 in (0.508 mm)	8
11-725	25 mm (1 in)	5	5-1/2 in (140 mm)	1/50 in (0.508 mm)	7
11-725T	25 mm (1 in)	10	5-1/2 in (140 mm)	1/50 in (0.508 mm)	7
11-725L	25 mm (1 in)	20	5-1/2 in (140 mm)	1/50 in (0.508 mm)	7

OLFA® is a registered trademark of OLFA® Corporation.

STANLEY® HEAVY-DUTY QUICK-POINT™ SNAP-OFF BLADES

- Replacement blade for the Stanley® 1" snap-off knife (10-425).
- Fits most 25 mm snap-off blade knives.
- Blade made of high carbon steel.
- Blade sections snap-off providing fresh, sharp cutting points.



Product #	Size	Blades per Pack	Length	Blade Thickness	Points per Blade
11-325	25 mm (1 in)	3	5-7/16 in (138 mm)	0.027 in (0.686 mm)	7
11-325T	25 mm (1 in)	10 with Dispenser	5-7/16 in (138 mm)	0.027 in (0.686 mm)	7

STANLEY® QUICK-POINT™ SNAP-OFF BLADES

- Blade made of high carbon steel.
- Blade sections snap off providing fresh, sharp cutting points.



Product #	Size	Blades per Pack	Length	Blade Thickness	Points per Blade
11-300	9 mm (0.354 in)	3	3-1/4 in (83 mm)	0.017 in (0.432 mm)	13
11-301	18 mm (0.709 in)	3	4-1/4 in (108 mm)	1/50 in (0.508 mm)	8
11-301L	18 mm (0.709 in)	50	4-3/4 in (121 mm)	1/50 in (0.508 mm)	8

STANLEY® SNAP-OFF HOOK BLADES

- 4 cutting points per blade.
- Each snap-off hook blade is equivalent to 2 regular hook blades.
- Ideal for cutting asphalt shingles, roofing felt, tar paper.
- 18 MM: Fits Olfa® L-series snap-off knives.
Fits all Stanley® 18 mm snap-off knives.
- 25 MM: Fits Olfa® H-series snap-off knives.



Product #	Size	Blades per Pack	Blade Length	Blade Thickness	Points per Blade
11-618	18 mm (0.709 in)	5	4-1/8 in (105 mm)	0.065 in (1.6 mm)	4
11-618L	18 mm (0.709 in)	20	4-1/8 in (105 mm)	0.065 in (1.6 mm)	4
11-625	25 mm (1 in)	5	5-1/4 in (133 mm)	0.065 in (1.6 mm)	4
11-625L	25 mm (1 in)	20	5-1/4 in (133 mm)	0.065 in (1.6 mm)	4

OLFA® is a registered trademark of OLFA® Corporation.

STANLEY® SHEEPFOOT BLADE

- Sheepfoot-style blade made of cutlery stainless steel.
- Blade used for heavy-duty cutting and carving.
- For use in 10-049.



Product #	Blade per Pack	Length	Blade Thickness
11-040	1	2-9/16 in (65 mm)	0.040 in (1.02 mm)

STANLEY® UTILITY BLADE

- Utility blade made of cutlery stainless steel.
- Blade used for fine cutting.
- For use in 10-049.



Product #	Blade per Pack	Length	Blade Thickness
11-041	1	2-9/16 in (65 mm)	0.040 in (1.02 mm)

STANLEY® WHITTLING CRAFT BLADES

- Blade made of high carbon steel.
- Blade used for whittling and scoring.

Product #	Blades per Pack	Blade Length	Blade Thickness
11-111A (Bulk)	400	2-3/8 in (60 mm)	0.023 in (0.58 mm)



STANLEY® LOW ANGLE CRAFT BLADES

- Low angled blade for fine cutting work such as veneering, trimming, precision cutting and stripping.
- Blade made of high carbon steel.

Product #	Blades per Pack	Blade Length	Blade Thickness
11-113A (Bulk)	400	2-1/8 in (54 mm)	0.024 in (0.61 mm)



STANLEY® RAZOR BLADES

- Blade made of high carbon steel with steel backing.
- Blade fits standard razor blade tools.



Product #	Blades per Pack	Blade Length	Blade Thickness
28-510	10	1-1/2 in (38 mm)	0.009 in (0.229 mm)
11-515	100	1-1/2 in (38 mm)	0.009 in (0.229 mm)

STANLEY® BLADE DISPOSAL CONTAINER

- High impact, puncture resistant container.
- Snap-on lid locks tight for safety and is tethered to the container.
- Container can be placed on a flat surface or fixed to a wall with the metal rack.



Product #	Description	Length	Width	Height
11-080	Blade Disposal Container	–	–	–
11-085	Metal Wire Rack	6-5/8 in (168 mm)	6-1/2 in (165 mm)	9-3/16 in (235 mm)
11-081	Blade Disposal Container with Metal Wire Rack	–	–	–

STANLEY® ALL-PURPOSE SHEARS

- Serrated blade holds material in place.
- Ideal for a wide range of cutting needs.
- Cuts twine, heavy fabric, strapping and other heavy-duty materials.
- Carbon steel blades provide long life and smooth cutting.
- Ergonomic handles allow for effortless and comfortable cutting.



Product #	Overall Length	Blade Length	Depth	Width
STHT14102	9-7/8 in (251 mm)	5-5/32 in (131 mm)	1 in (25 mm)	1 in (25 mm)

