

390 Stealth Original



NITRILE COATING

1

Exceptionally strong nitrile coating with a textured grip has excellent abrasion and puncture resistance; handles well in oil slick applications

SEAMLESS KNIT SHELL

2

Open back design, seamless knit shell keeps hands cool and comfortable

ERGONOMICALLY FORMED

3

Ergonomically formed to help reduce hand fatigue

SEAMLESS KNIT WRIST

4

Extended snug-fitting seamless knit wrist keeps out dirt and debris



#390 ORIGINAL S/P		
USAGE/UTILISATION		
LIGHT/LÉGER	MEDIUM/MOYEN	HEAVY/ROBUSTE
FEATURES/CARACTÉRISTIQUES		
HAND-WEARING/NITRILE COATING, LIGHTLY TEXTURED FINISH, NYLON SEAMLESS KNIT SHELL, EXTENDED SNUG-FITTING WRIST		
ENDUIT DE NITRILE ROBUSTE ET RÉSISTANT, FIN LÉGÈREMENT TEXTURÉE, COQUILLE EN TRICOT DE NYLON, SANS COUTURE, POIGNET RAJUSTÉ AU SERRÉ		
SLIP DEFENCE/PROTECTION CONTRE LE GLISSEMENT		
DRY/SEC	OILY/HUILEUX	WET/HUMIDE
FAIR/MOYEN	FAIR/MOYEN	FAIR/MOYEN
GOOD/BON	GOOD/BON	GOOD/BON
EXCELLENT	EXCELLENT	EXCELLENT
MADE IN CHINA/FABRIQUÉ EN CHINE		
STEALTH GLOVES		
100% QUALITY INSURED AND GUARANTEED		
© 2015 WATSON GLOVES LTD. CANADA		

MECHANICAL PROTECTION RATING



Abrasion: 4 Blade Cut: 1 Tear: 2 Puncture: 1

*Level 4 is the highest protection (with the exception of blade cut, the highest level is 5), level 1 is the lowest protection

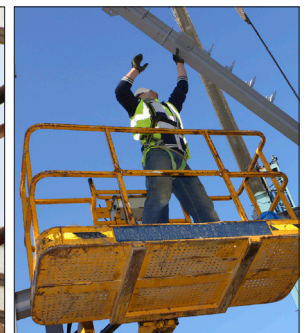
10/01/2015

SPECIFICATIONS

NAME: Stealth Original
STYLE #: 390
SIZE: S-XXL

APPLICATIONS
Automotive
Construction
Yard & Field Work

COATED



BURNABY
P 604 874 1105
F 604 875 9009
T 800 663 9509

CALGARY
P 403 279 2262
F 403 236 7919
T 800 363 7462

MISSISSAUGA
P 905 363 0727
F 905 363 0730
T 888 715 4299



HEAD OFFICE
7955 North Fraser Way
Burnaby, BC V5J 0A4
www.watsongloves.com

