

Capto-Compatible* Turn/Mill Toolholders

The C4, C5, C6, holders you need, Techniks Certified.



ER Collet Chucks



End Mill Holders



ShrinkFIT



Face Mill Arbors



Turning Tools & Inserts



SlimFIT Holders



Built for Speed.

*Compatible with Capto tool system. Techniks products are not affiliated with or endorsed by Sadvik AB.

Capto-Compatible* C4, C5, C6, ER Collet Chucks



Features

- Balanced to 25,000 RPM at G2.5
- T.I.R. 0.0001" or better
- PowerCOAT Nut included!

Friction-reducing PowerCOAT nut provides 75% greater clamping power than standard nuts for improved rigidity, accuracy, and extended tool life.



Each toolholder is individually lab tested, inspected, and certified for quality.

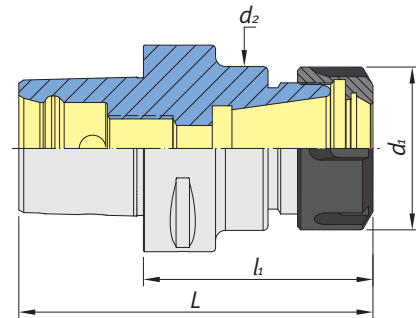
An individual inspection report comes with each holder documenting accuracy and balance.

Techniks Certified toolholders are backed by our 100% Performance Guarantee.



For turn/mill machines that accept "C" style toolholders.

Coolant-thru is standard feature.



C4 ER Collet Chucks

Part No.	Description	L	l1	d1	d2	Size Range
141.122.16.070	C4 x ER16-70mm	94mm	70mm	28mm	28mm	1.0-10.0mm
141.122.25.052	C4 x ER25-52mm	76mm	52mm	42mm	42mm	1.0-16.0mm
141.122.32.054	C4 x ER32-54mm	78mm	54mm	50mm	50mm	2.0-20.0mm

C5 ER Collet Chucks

Part No.	Description	L	l1	d1	d2	Size Range
142.122.16.100	C5 x ER16-100mm	130mm	100mm	28mm	28mm	1.0-10.0mm
142.122.25.055	C5 x ER25-55mm	82mm	55mm	42mm	42mm	1.0-16.0mm
142.122.32.057	C5 x ER 32-57mm	84mm	57mm	50mm	50mm	2.0-20mm

C6 ER Collet Chucks

Part No.	Description	L	l1	d1	d2	Size Range
143.122.16.100	C6 x ER16-100mm	138mm	100mm	28mm	28mm	1.0-10.0mm
143.122.25.060	C6 x ER25-60mm	98mm	60mm	42mm	42mm	1.0-16.0mm
143.122.32.070	C6 x ER32-70mm	108mm	70mm	50mm	50mm	2.0-20.0mm
143.122.40.065	C6 x ER40-65mm	103mm	65mm	63mm	63mm	3.0-26.0mm
143.123.08.600	C6 x ER8M-6"	190mm	6"	12mm	16mm	0.5-5.0mm
143.123.11.600	C6 x ER11M-6"	190mm	6"	19mm	20mm	0.5-7.0mm
143.123.16.600	C6 x ER16M-6"	190mm	6"	22mm	25mm	1.0-10.0mm
143.123.20.600	C6 x ER20M-6"	190mm	6"	28mm	32mm	2.0-16.0mm

*Compatible with the Capto tool system. Techniks products are not affiliated with or endorsed by Sandvik AB.

Capto-Compatible* C4, C6, SlimFIT Collet Chucks



Use SlimFIT for tight clearance situations.

Each toolholder is individually lab tested, inspected, and certified for quality.

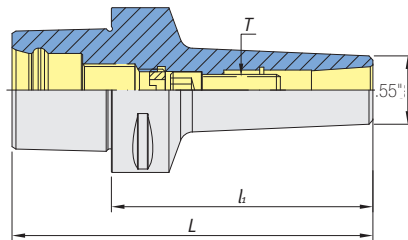
An individual inspection report comes with each holder documenting accuracy and balance.

Techniks Certified toolholders are backed by our 100% Performance Guarantee.

Features

- Powerful drawbar clamping and 4° collet maximizes holding power on tool shank
- Maximum T.I.R. 0.0001"
- Balanced to 25,000 RPM at G2.5

For turn/mill machines that accept "C" style toolholders. Coolant-thru is standard feature.



SlimFIT Collet Set

Part No.	Description
18851-12IMS	SlimFIT 6 - 12 pc. set
1/8" – 1/4" by 64ths (except no 5/32 or 7/32) 3mm – 6mm by 1mm	

C4 & C6 SlimFIT Collet Chucks

Part No.	Description	L	I1	Drawbar
141.648.06.075	C4 x SBL 6–75mm	94mm	75mm	SBL-M6CT-20
143.648.06.080	C6 x SBL 6–80mm	118mm	80mm	SBL-M6CT-20



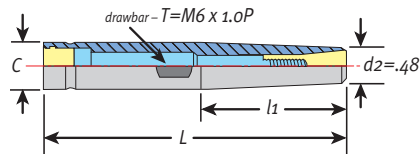
SlimFIT Inch Size Collets

Part No.	Description
18851-3/32	SlimFIT 6 - 3/32" collet
18851-7/64	SlimFIT 6 - 7/64" collet
18851-1/8	SlimFIT 6 - 1/8" collet
18851-9/64	SlimFIT 6 - 9/64" collet
18851-5/32	SlimFIT 6 - 5/32" collet
18851-11/64	SlimFIT 6 - 11/64" collet
18851-3/16	SlimFIT 6 - 3/16" collet
18851-13/64	SlimFIT 6 - 13/64" collet
18851-7/32	SlimFIT 6 - 7/32" collet
18851-15/64	SlimFIT 6 - 15/64" collet
18851-1/4	SlimFIT 6 - 1/4" collet

SlimFIT Extensions



- Use with any toolholder
- Extremely accurate drawbar collet
- Use with SlimFIT 6 collets



SlimFIT Extensions

Part No.	Description	L	I1	C
06032-3	1/2" x OLP6-3" extension	3"	1.89"	.50"
06032	1/2" x OLP6-5" extension	5"	1.89"	.50"
06034	1/2" x OLP6-6" extension	6"	1.89"	.50"
06038	5/8" x OLP6-5" extension	5"	1.89"	.625"
06040	5/8" x OLP6-6" extension	6"	1.89"	.625"
06042	5/8" x OLP6-8" extension	8"	1.89"	.625"

SlimFIT Metric Size Collets

Part No.	Description
18851-03	SlimFIT 6 - 3mm collet
18851-04	SlimFIT 6 - 4mm collet
18851-05	SlimFIT 6 - 5mm collet
18851-05.5	SlimFIT 6 - 5.5mm collet
18851-06	SlimFIT 6 - 6mm collet

*Compatible with the Capto tool system. Techniks products are not affiliated with or endorsed by Sandvik AB.



We stand behind all our products with our 100% Satisfaction Guarantee • www.techniksusa.com

Capto-Compatible* C4, C6, Endmill Holders



Features

- High precision bore (H5) is best in the industry
- Extends cutting tool life 60%
- Balanced to 15,000 RPM at G6.3

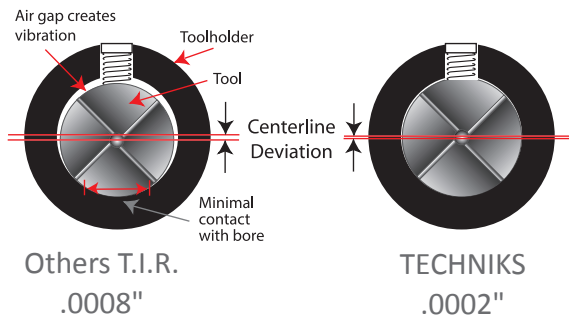


Each toolholder is individually lab tested, inspected, and certified for quality.

An individual inspection report comes with each holder documenting accuracy and balance.

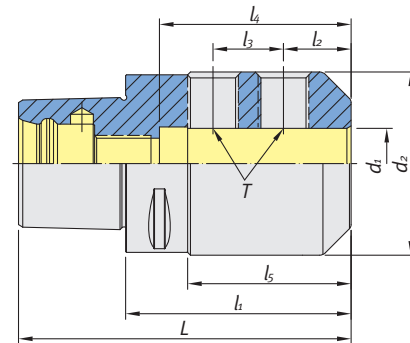
Techniks Certified toolholders are backed by our 100% Performance Guarantee.

Techniks H5 Bore Tolerance Extends Tool Life 60%
You lose 10% of cutting tool life
for every .0001" of T.I.R.



For turn/mill machines that accept "C" style toolholders.

Coolant-thru is standard feature.



C4 Endmill Holders

Part No.	Description	L	I1	I2	I4	I5	d1	d2	T
141.653.54.197	C4 x SLN 1/4"-1.97"	2.91"	1.97"	0.63"	1.38"	1"	0.25"	0.78"	1/4-28"
141.653.55.197	C4 x SLN 5/16"-1.97"	2.91"	1.97"	0.63"	1.38"	1.02"	0.3125"	0.88"	5/16-24"
141.653.56.197	C4 x SLN 3/8"-1.97"	2.91"	1.97"	0.75"	1.535"	1.08"	0.375"	1"	3/8-24"
141.653.58.217	C4 x SLN 1/2"-2.17"	3.11"	2.17"	0.875"	1.732"	1.42"	0.5"	1.25"	7/16-20"
141.653.61.217	C4 x SLN 5/8"-2.17"	3.11"	2.17"	0.875"	1.732"	1.54"	0.625"	1.5"	7/16-20"

C6 Endmill Holders

Part No.	Description	L	I1	I2	I3	I4	I5	d1	d2	T
143.653.54.217	C6 x SLN 1/4"-2.17"	3.66"	2.17"	0.63"	-	1.38"	0.984"	0.25"	0.78"	1/4-28"
143.653.55.217	C6 x SLN 5/16"-2.17"	3.66"	2.17"	0.63"	-	1.38"	1.024"	0.3125"	0.88"	5/16-24"
143.653.56.236	C6 x SLN 3/8"-2.36"	3.86"	2.36"	0.75"	-	1.535"	1.181"	0.375"	1"	3/8-24"
143.653.58.236	C6 x SLN 1/2"-2.36"	3.86"	2.36"	0.875"	-	1.732"	1.299"	0.5"	1.25"	7/16-20"
143.653.61.256	C6 x SLN 5/8"-2.56"	4.06"	2.56"	0.937"	-	1.732"	1.398"	0.625"	1.5"	1/2-20"
143.653.64.256	C6 x SLN 3/4"-2.56"	4.06"	2.56"	1"	-	1.929"	1.476"	0.75"	1.75"	5/8-18"
143.653.68.315	C6 x SLN 1" -3.15"	4.65"	3.15"	1.125"	1"	2.559"	2.283"	1"	2"	3/4-16"
143.653.72.354	C6 x SLN 1-1/4" -3.54"									

*Compatible with the Capto tool system. Techniks products are not affiliated with or endorsed by Sandvik AB.

Capto-Compatible* C4, C5, C6, ShrinkFIT Holders



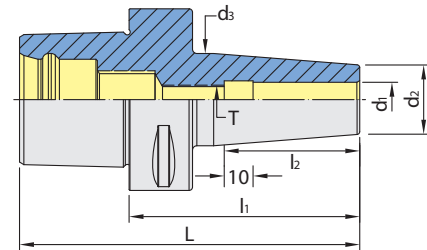
For turn/mill machines that accept "C" style toolholders.

Coolant-thru is standard feature.



Features

- Maximum T.I.R. only 0.0001"
- Balanced to 25,000 RPM at G2.5
- Superior rigidity and holding power



C4 ShrinkFIT Chucks

Part No.	Description	L	l1	l2	d1	d2	d3	T
141.651.54.295	C4 x SF 1/4"-2.95"	3.9"	2.95"	1.41"	0.3125"	0.83"	1.06"	M5 x 0.8P
141.651.55.295	C4 x SF 5/16"-2.95"	3.9"	2.95"	1.41"	0.3125"	0.83"	1.06"	M6 x 1.0P
141.651.56.295	C4 x SF 3/8"-2.95"	3.9"	2.95"	1.61"	0.375"	0.95"	1.26"	M8 x 1.25P
141.651.58.295	C4 x SF 1/2"-2.95"	3.9"	2.95"	1.81"	0.5"	1.10"	1.34"	M10 x 1.5P
141.651.61.315	C4 x SF 5/8"-3.15"	4.09"	3.15"	1.93"	0.625"	1.06"	1.34"	M12 x 1.75P

C5 ShrinkFIT Chucks

Part No.	Description	L	l1	l2	d1	d2	d3	T
142.651.52.315	C5 x SF 1/8-80mm	110mm	80mm	38mm	1/8"	16mm	22mm	M6 x 1.0P
142.651.53.315	C5 x SF 3/16-80mm	110mm	80mm	38mm	3/16"	16mm	22mm	M6 x 1.0P
142.651.54.315	C5 x SF 1/4-80mm	110mm	80mm	38mm	1/4"	21mm	27mm	M5 x 0.8P
142.651.56.315	C5 x SF 3/8-80mm	110mm	80mm	51mm	3/8"	24mm	32mm	M8 x 1.25P
142.651.58.315	C5 x SF 1/2-80mm	110mm	80mm	38mm	1/2"	28mm	34mm	M10 x 1.5P
142.651.61.315	C5 x SF 5/8-80mm	110mm	80mm	44.5mm	5/8"	27mm	34mm	M12 x 1.75P
142.651.64.315	C5 x SF 3/4-80mm	110mm	80mm	38mm	3/4"	36mm	42mm	M16 x 2.0P

C6 ShrinkFIT Chucks

Part No.	Description	L	l1	l2	d1	d2	d3	T
143.651.52.300	C6 x SF 1/8"-3"	4.50"	3"	1.77"	0.125"	0.36"	0.64"	M6 x 1.0P
143.651.53.300	C6 x SF 3/16"-3"	4.50"	3"	1.77"	0.137"	0.43"	0.70"	M6 x 1.0P
143.651.54.315	C6 x SF 1/4"-3.15"	4.65"	3.15"	1.41"	0.3125"	0.83"	1.06"	M5 x 0.8P
143.651.55.315	C6 x SF 5/16"-3.15"	4.65"	3.15"	1.41"	0.3125"	0.83"	1.06"	M6 x 1.0P
143.651.56.315	C6 x SF 3/8"-3.15"	4.65"	3.15"	1.61"	0.375"	0.95"	1.26"	M8 x 1.25P
143.651.58.315	C6 x SF 1/2"-3.15"	4.65"	3.15"	1.81"	0.5"	1.10"	1.34"	M10 x 1.5P
143.651.61.335	C6 x SF 5/8"-3.35"	4.84"	3.35"	1.93"	0.625"	1.06"	1.34"	M12 x 1.75P
143.651.64.335	C6 x SF 3/4"-3.35"	4.84"	3.35"	2"	0.75"	1.26"	1.65"	M16 x 2.0P
143.651.68.354	C6 x SF 1"-3.54"	5.04"	3.54"	2.24"	1"	1.73"	2.08"	M16 x 2.0P
143.651.72.374	C6 x SF 1-1/4"-3.74"	5.24"	3.74"	2.4"	1.25"	1.73"	2.08"	M16 x 2.0P

*Compatible with the Capto tool system. Techniks products are not affiliated with or endorsed by Sandvik AB.



We stand behind all our products with our 100% Satisfaction Guarantee • www.techniksusa.com

Capto-Compatible* C4, C5, C6, Face Mill Arbors

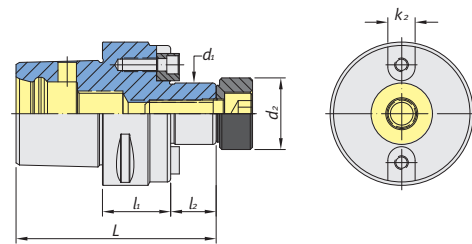


Features

- Compatible with all face mills
- H6 arbor tolerance for less chatter & better tool life
- Techniks Certified for accuracy and balance and backed by our 100% Performance guarantee



For turn/mill machines that accept "C" style toolholders.
Coolant-thru is standard feature.



C4, C5, C6 Face Mill Arbors

Part No.	Description	L	l1	l2	d1	d2	k2
141.151.64.100	C4 x FMA 3/4"-1"	3.13"	1"	0.687"	3/4"	0.88"	0.314"
142.151.68.157	C5 x FMA 1"-1.57"	3.43"	1.57"	0.687"	1"	1.24"	0.375"
143.151.64.100	C6 x FMA 3/4"-1"	3.18"	1"	0.687"	3/4"	0.88"	0.314"
143.151.68.200	C6 x FMA 1"-2"	4.18"	2"	0.687"	1"	1.24"	0.375"
143.151.72.200	C6 x FMA 1-1/4"-2"	4.18"	2"	0.687"	1.25"	1.614"	0.5"

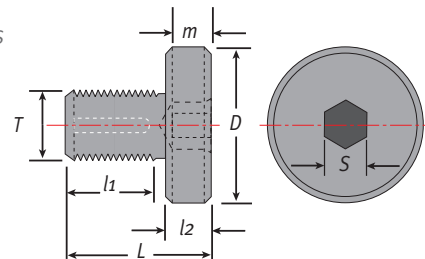
CoolBLAST Coolant Arbor Screws



- Use with Techniks face mill arbors
- Works with coolant thru face mills
- For coolant up to 1,500 PSI



CoolBLAST arbor screw provides coolant path.



Part No.	Description	Style	Size	D	L	l1	l2	T	S	m
WF.C1-0.75	CoolBLAST arbor screw 3/4"	B	3/4"	7/8"	1.8"	1.4"	.37"	3/8"-24UNF	1/4"	.197"
9851125	CAS-A-0.75 Smaller "D"	A	3/4"	5/8"	1.375"	1.0"	.36"	3/8-24 UNF	1/4"	.37"
WF.C1-1	CoolBLAST arbor screw 1.0"	B	1.0"	1-3/16"	1.4"	0.81"	.37"	1/2"-20UNF	5/16"	.197"
9851135	CAS-A-1.00 Smaller "D"	A	1.0"	3/4"	1.375"	1.0"	.38"	1/2-20UNF	5/16"	.37"
WF.C1-1.25	CoolBLAST arbor screw 1-1/4"	B	1-1/4"	1-1/2"	1.44"	0.94"	.5"	5/8"-18UNF	5/16"	.236"

Blue indicates coolant.

Standard Arbor Screws

Part No.	Description	Arbor Size	D	L	l1	l2	T	S	m
WF0.75	FMA arbor screw 3/4"	3/4"	7/8"	1.8"	1.4"	.37"	3/8"-24UNF	1/4"	.197"
WF1	FMA arbor screw 1.0"	1.0"	1-3/16"	1.4"	0.81"	.37"	1/2"-20UNF	5/16"	.197"
WF1.25	FMA arbor screw 1-1/4"	1-1/4"	1-1/2"	1.44"	0.94"	.5"	5/8"-18UNF	5/16"	.236"

*Compatible with the Capto tool system. Techniks products are not affiliated with or endorsed by Sandvik AB.

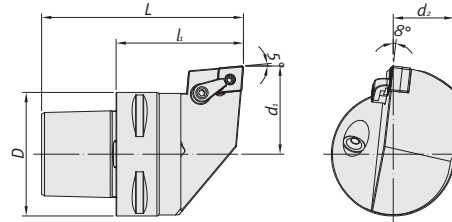
Capto-Compatible* C6 External Turning Tools



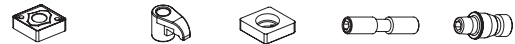
For turn/mill machines that accept "C" style toolholders.

Features

- High accuracy for best repeatability
- Turning, boring, threading and grooving



C6 MCLN



Part No.	Description	L	l1	D	d1	d2	Insert	Clamp	Shim	Screw	Lock Pin
143.475.12L.065	C6-MCLNL-DX12	103	65	63	45	31	CN_43_	MC620	CMS432	MS630	MLP46-A
143.475.12R.065	C6-MCLNR-DX12	103	65	63	45	31	CN_43_	MC620	CMS432	MS630	MLP46-A

CNMG Inserts for Negative Turning and Boring

Part No.	Description	Grade	Radius	Operation	Material
6607029	CNMG431-NN	LT10	0.016	finishing	P-M-K-S-H
6608011	CNMG431-NN	LT1000	0.016	finishing	P-M-K-S-H
6607033	CNMG432-NN	LT10	0.031	general	P-M-K-S-H
6608016	CNMG432-NN	LT1000	0.031	general	P-M-K-S-H
6601436	CNMG432-NM	LT10	0.031	roughing	P-M-K-S-H
6601446	CNMG432-NR	LT10	0.031	roughing	P-M-K-S-H
6608026	CNMG432-NX	LT1000	0.031	general	P-M-K-S-H
6607037	CNMG433-NN	LT10	0.047	roughing	P-M-K-S-H
6608021	CNMG433-NN	LT1000	0.047	roughing	P-M-K-S-H

We recommend LT1000 grade inserts for maximum insert performance. LT1000 grade features an advanced PVD coating that is 14 microns thick and lasts 250% longer than other inserts.



CNMG

CNMM Inserts for Negative Turning and Boring

Part No.	Description	Grade	Radius	Operation	Material
6602011	CNMM432-NR	LT10	0.031	finish-medium	P-M-K-S-H
6602022	CNMM433-NR	LT10	0.047	medium-rough	P-M-K-S-H



CNMM

CNMP Inserts for Negative Turning and Boring

Part No.	Description	Grade	Radius	Operation	Material
6607045	CNMP432-NN	LT10	0.031	finish-medium	P-M-K-S-H
6608031	CNMP432-NN	LT1000	0.031	finish-medium	P-M-K-S-H
3665525	CNMP433-NN	LT10	0.047	medium-rough	P-M-K-S-H
6608036	CNMP433-NN	LT1000	0.047	medium-rough	P-M-K-S-H



CNMP

CNGG Inserts for Aluminum Negative Turning and Boring

Part No.	Description	Grade	Radius	Operation	Material
6607901	CNGG431-ALU	LT05	0.016	finishing	N
6607905	CNGG432-ALU	LT05	0.031	general	N



CNGG

*Compatible with the Capto tool system. Techniks products are not affiliated with or endorsed by Sandvik AB.

P = steel, M = stainless, K = cast iron, S = high temp alloys, H = hardened material, N = aluminum & alloys



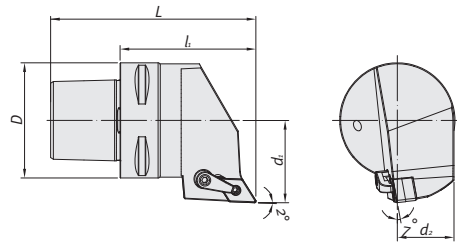
Capto-Compatible* C6 External Turning Tools



For turn/mill machines that accept "C" style toolholders.

Features

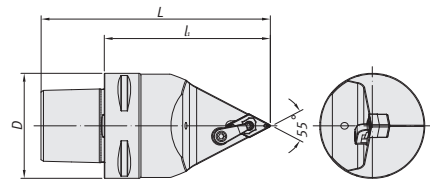
- High accuracy for best repeatability
- Turning, boring, threading and grooving



C6 MDJN



Part No.	Description	L	l1	D	d1	d2	Insert	Clamp	Shim	Screw	Lock Pin
143.476.15L.075	C6-MDJNL-EX15	113	75	63	45	31	DN_43_	MC622	DMS442	MS630	MLP46L-A
143.476.15R.075	C6-MDJNR-EX15	113	75	63	45	31	DN_43_	MC622	DMS442	MS630	MLP46L-A



C6 MDNN

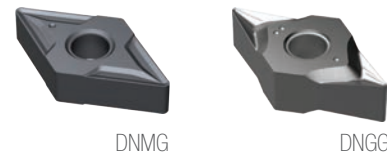


Part No.	Description	L	l1	D	Insert	Clamp	Shim	Screw	Lock Pin
143.481.15N.100	C6-MDNNN-H15	138	100	63	DN_43_	MC622	DMS442	MS625	MLP46L-A

DNMG and DNGG Inserts for Negative Turning and Boring

Part No.	Description	Grade	Radius	Operation	Material
7607069	DNMG431-NN	LT10	0.016	finishing	P-M-K-S-H
7608021	DNMG431-NN	LT1000	0.016	finishing	P-M-K-S-H
7607073	DNMG432-NN	LT10	0.031	finish-medium	P-M-K-S-H
7608026	DNMG432-NN	LT1000	0.031	finish-medium	P-M-K-S-H
7608029	DNMG432-NX	LT1000	0.031	general	P-M-K-S-H
7607077	DNMG433-NN	LT10	0.047	medium-rough	P-M-K-S-H
7608031	DNMG433-NN	LT1000	0.047	medium-rough	P-M-K-S-H

We recommend LT1000 grade inserts for maximum insert performance. LT1000 grade features an advanced PVD coating that is 14 microns thick and lasts 250% longer than other inserts.



*Compatible with the Capto tool system. Techniks products are not affiliated with or endorsed by Sandvik AB.

P = steel, M = stainless, K = cast iron, S = high temp alloys, H = hardened material, N = aluminum & alloys

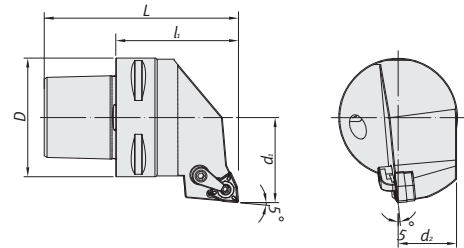
Capto-Compatible* C6 External Turning Tools



For turn/mill machines that accept "C" style toolholders.

Features

- High accuracy for best repeatability
- Turning, boring, threading and grooving



C6 MWLN

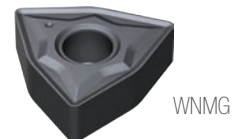


Part No.	Description	L	l1	D	d1	d2	Insert	Clamp	Shim	Screw	Lock Pin
143.478.08L.065	C6-MWLN-DX08	103	65	63	45	31	WN_43_	MC620	TMS432	MS630	MLP46L-A
143.478.08R.065	C6-MWLN-DX08	103	65	63	45	31	WN_43_	MC620	TMS432	MS630	MLP46L-A

WNMG Inserts for Negative Turning and Boring

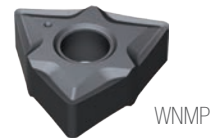
Part No.	Description	Grade	Radius	Operation	Material
4607257	WNMG431-NN	LT10	0.016	finishing	P-M-K-S-H
4608011	WNMG431-NN	LT1000	0.016	finishing	P-M-K-S-H
4607261	WNMG432-NN	LT10	0.031	finish-medium	P-M-K-S-H
4608016	WNMG432-NN	LT1000	0.031	finish-medium	P-M-K-S-H
4608023	WNMG432-NM	LT1000	0.031	roughing	P-M-K-S-H
4601437	WNMG332-NR	LT10	0.031	roughing	P-M-K-S-H
4608021	WNMG432-NX	LT1000	0.031	general	P-M-K-S-H
4600076	WNMG432-WM	LT10	0.031	finish-medium	P-M-K-S-H
4607265	WNMG433-NN	LT10	0.047	medium-rough	P-M-K-S-H
4608026	WNMG433-NN	LT1000	0.047	medium-rough	P-M-K-S-H

We recommend LT1000 grade inserts for maximum insert performance. LT1000 grade features an advanced PVD coating that is 14 microns thick and lasts 250% longer than other inserts.



WNMP Inserts for Negative Turning and Boring

Part No.	Description	Grade	Radius	Operation	Material
4607277	WNMP432-NN	LT10	0.031	finish-medium	P-M-K-S-H
4608031	WNMP432-NN	LT1000	0.031	finish-medium	P-M-K-S-H



*Compatible with the Capto tool system. Techniks products are not affiliated with or endorsed by Sandvik AB.

P = steel, M = stainless, K = cast iron, S = high temp alloys, H = hardened material, N = aluminum & alloys

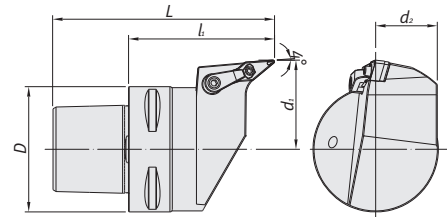
Capto-Compatible* C6 External Turning Tools



For turn/mill machines that accept "C" style toolholders.

Features

- High accuracy for best repeatability
- Turning, boring, threading and grooving



C6 MVLN

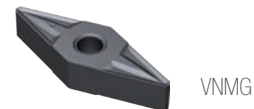


Part No.	Description	L	l1	D	d1	d2	Insert	Clamp	Shim	Screw	Screw
143.479.16L.075	C6-MVLNL-EX16	113	75	63	45	31	VN__33_	MC622	VMS322	MS630	MLP34L-A
143.479.16R.075	C6-MVLNR-EX16	113	75	63	45	31	VN__33_	MC622	VMS322	MS630	MLP34L-A

VNMG Inserts for Negative Turning and Boring

Part No.	Description	Grade	Radius	Operation	Material
8607241	VNMG331-NN	LT10	0.016	finishing	P-M-K-S-H
8608011	VNMG331-NN	LT1000	0.016	finishing	P-M-K-S-H
8607245	VNMG332-NN	LT10	0.031	finish-medium	P-M-K-S-H
8608016	VNMG332-NN	LT1000	0.031	finish-medium	P-M-K-S-H

We recommend LT1000 grade inserts for maximum insert performance. LT1000 grade features an advanced PVD coating that is 14 microns thick and lasts 250% longer than other inserts.



VNMG

VNGG Inserts for Aluminum Negative Turning and Boring

Part No.	Description	Grade	Radius	Operation	Material
8607921	VNGG331-ALU	LT 05	0.016	finishing	N
8607925	VNGG332-ALU	LT 05	0.031	finish-medium	N



VNGG

*Compatible with the Capto tool system. Techniks products are not affiliated with or endorsed by Sandvik AB.

P = steel, M = stainless, K = cast iron, S = high temp alloys, H = hardened material, N = aluminum & alloys