

SOLUTIONS ALUMINIUM



Maximize time on the job with products designed for high performance cutting, grinding, cleaning and finishing on aluminum and other soft metals.

ALUMINUM

Aluminum is durable, offers incredible strength for its weight, and is naturally resistant to corrosion. These attributes make it an attractive option when determining what material to use in metal fabrication.

Aluminum can be a challenging metal to work with because of its low melting temperature and tendency to load on abrasives, making them less effective. Choosing the right abrasive when working with aluminum can eliminate weld defects, maximize productivity and reduce overall consumable spend.

ALUMINUM WELD DEFECTS REDUCE STRUCTURAL INTEGRITY

WELD POROSITY

PROBLEM: Reduced weld strength and lower fatigue resistance.

CAUSE: Hydrogen gas dissolved in the molten weld.

SOURCE: Moisture, grease or other hydro-carbons in weld zone.

SOLUTION: How to minimize weld porosity.

Prior to welding, remove all surface contaminants including grease, oil, dirt or paint that can generate hydrogen gas or interfere with weld fusion. Use only high quality, contaminant-free products for surface prep and inter-pass grinding.

OXIDE INCLUSIONS

PROBLEM: Reduced weld strength and lower fatigue resistance.

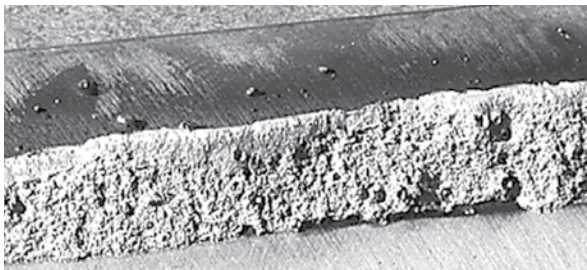
CAUSE: Aluminum oxide is not destroyed in the welding process.

SOURCE: Natural-occurring aluminum oxide on material prior to welding.

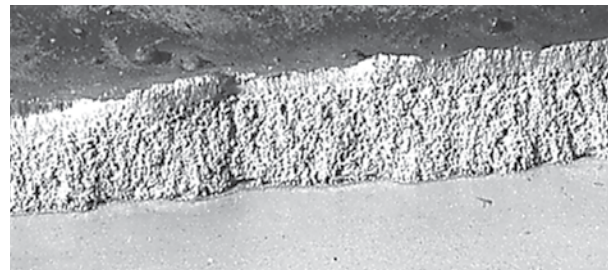
SOLUTION: How to minimize oxide inclusions.

Remove the thin, tough, transparent film of aluminum oxide from the metal surface. This process should be done just before starting the weld. Use only high quality, contaminant-free products for surface prep and inter-pass grinding.

SEE THE DIFFERENCE



Aluminum weld without proper weld preparation exhibits porosity, resulting in an unacceptable weld.



Aluminum weld with proper weld preparation shows no pores.

HOW ALUMINUM IS DIFFERENT FROM STEEL

INCLUSIONS: The oxide which occurs naturally on steel is destroyed during the welding process. Aluminum oxide is not destroyed during aluminum welding and must be removed prior to welding.

HEAT EXPANSION: When heated, aluminum expands twice as much as steel. As a result, warping and bending are significant issues.

ELECTRICAL CONDUCTIVITY: Since aluminum conducts electricity better than steel, welding parameters like amperage must be adjusted for different conductance.

RFD'S FOR GRINDING, BLENDING & FINISHING

Tiger Aluminum coated abrasive resin fiber & blending discs are **resistant to loading** so you can get the most demanding aluminum jobs done right and done fast.



Tiger Aluminum is specifically designed for high performance grinding on aluminum and other non-ferrous metals. Top coated, Tiger Aluminum releases a lubricant while grinding, reducing heat buildup. Lower grinding temperatures delay melting and prevent the disc from loading, which results in higher cut rates, long life and a superior finish.



APPLICATIONS: Heavy Stock Removal, Edge Chamfering, Weld Blending, Grinding and Surface Finishing

TIGER ALUMINUM RESIN FIBER DISCS / Aluminum Oxide / Non-Loading on Non-Ferrous Metals

Specifically designed for high performance on ALUMINUM and other non-ferrous metals. A top coating grinds cool and is resistant to loading, which results in higher cut rates, long life and a superior finish.



Diameter	Grit Size	Standard Pack	7/8" Arbor	5/8"-11 Hub
4-1/2"	24	25	60400	60600
	36		60401	60601
	50		60402	60602
	60		60403	60603
	80		60404	60604
	120		60406	60606
5"	24	25	60410	60610
	36		60411	60611
	50		60412	60612
	60		60413	60613
	80		60414	60614
	120		60416	60616
7"	24	25	60420	60620
	36		60421	60621
	50		60422	60622
	60		60423	60623
	80		60424	60624
	120		60426	60626

Do not exceed maximum RPM of back-up pad.





60603



60423

TIGER ALUMINUM BLENDING DISCS / Aluminum Oxide / Non-Loading on Non-Ferrous Metals

Weiler's cloth backed coated abrasive blending discs are designed for use on right angle air tools. Available with either a metal hub or a plastic button fastening system, the flexible back-up pads give the discs a great deal of conformability.

Diameter	Grit Size	Standard Pack		
			Type S Hub Style	Type R Hub Style
2"	36	50	59869	59806
	60		59870	59807
	80		59871	59808
	120		—	59809
3"	36	25	59874	59811
	60		59875	59812
	80		59876	59813
	120		59877	59814



59806

TIGER ALUMINUM GRINDS COOL, CUTS FAST

Tiger Aluminum releases a lubricant which reduces heat buildup and loading on the disc, allowing grains to sustain a high rate and aggressively remove material.



Metal shavings from Tiger Aluminum disc.



Metal shavings from a conventional disc.

CUTTING & GRINDING WHEELS

NON-LOADING WHEELS: Tiger Aluminum is a new line of cutting, grinding, and combination wheels that deliver a non-loading solution that maximizes cut rates, increasing productivity when working with aluminum.



These wheels leverage a unique blend of abrasive grains and contaminant-free additives that work to prevent loading, resulting in higher cut rates and long wheel life.

Tiger delivers high performance on aluminum:

- **Non-loading** formula keeps the wheel from gumming up, allowing operators to get more work done in less time without compromising durability.
- Silicon carbide and aluminum oxide blend delivers a **consistently high cut rate** throughout the life of the wheel.
- **Extended wheel life** on aluminum reduces changeovers and lowers cost of use.
- **Contaminant-free** wheels deliver a worry-free solution for aluminum applications.

APPLICATIONS: Aluminum Cutting, Grinding, Heavy Stock Removal, Weld Removal, Weld Blending, Beveling and Chamfering

Delivers a **FAST CUT**
for the life of the wheel

LONG WHEEL LIFE
reduces changeovers
and lowers cost of use

NON-LOADING ON ALUMINUM
allows operators to get
more work done in less time



TIGER ALUMINUM CUTTING WHEELS* / Silicon Carbide & Aluminum Oxide / Non-Loading

Tiger Aluminum wheels are specifically designed for high performance cutting on aluminum. These wheels blend abrasive grains with Weiler's non-loading formula, resulting in a fast and consistent cut rate on aluminum.

Diameter	Thickness	Grade	Max. RPM	TYPE 1 7/8" Arbor		TYPE 27 7/8" Arbor		TYPE 27 5/8"-11 Hub	
				Std. Pack	Item#	Std. Pack	Item #	Std. Pack	Item #
4-1/2"	.045"	ALU60S	13,300	25	58200	25	58205	10	58206
5"	.045"	ALU60S	12,200	25	58201	25	58207	10	58208
6"	.045"	ALU60S	10,200	25	58202	25	58209	10	58210
7"	.060"	ALU60S	8,500	25	58203	25	58211	10	58212



58202

*Contaminant-free, contains less than 0.1% Fe, S, Cl



TIGER ALUMINUM GRINDING WHEELS* / Silicon Carbide & Aluminum Oxide / Non-Loading

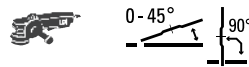
Tiger Aluminum wheels are specifically designed for high performance grinding and extended wheel life on aluminum. These wheels blend abrasive grains with Weiler's non-loading formula, resulting in a fast and consistent cut rate on aluminum.

Diameter	Thickness	Grade	Max. RPM	TYPE 27 7/8" Arbor		TYPE 27 5/8"-11 Hub	
				Std. Pack	Item#	Std. Pack	Item #
4-1/2"	1/4"	ALU24R	13,300	10	58225	10	58226
5"	1/4"	ALU24R	12,200	10	58227	10	58228
6"	1/4"	ALU24R	10,200	10	58229	10	58230
7"	1/4"	ALU24R	8,500	10	58231	10	58232
9"	1/4"	ALU24R	6,600	10	58233	10	58234



58225

*Contaminant-free, contains less than 0.1% Fe, S, Cl



TIGER ALUMINUM COMBO WHEELS* / Silicon Carbide & Aluminum Oxide / Non-Loading

Cut & grind combo wheels deliver true flexibility and efficiency when switching between cutting and grinding aluminum applications. These wheels blend abrasive grains with Weiler's non-loading formula, resulting in a fast and consistent cut rate on aluminum.

Diameter	Thickness	Grade	Max. RPM	TYPE 27 7/8" Arbor		TYPE 27 5/8"-11 Hub	
				Std. Pack	Item#	Std. Pack	Item #
4-1/2"	1/8"	ALU30T	13,300	25	58215	10	58216
5"	1/8"	ALU30T	12,200	25	58217	10	58218
6"	1/4"	ALU30T	10,200	25	58219	10	58220
7"	1/8"	ALU30T	8,500	25	58221	10	58222



58222

*Contaminant-free, contains less than 0.1% Fe, S, Cl

ALUMINUM ALLOYS

An aluminum alloy is a chemical composition where other elements are added to pure aluminum in order to enhance its properties, primarily to increase its strength. These other elements include iron, silicon, copper, magnesium, manganese and zinc at levels that combined may make up as much as 15 percent of the alloy by weight. Alloys are assigned a four-digit number, in which the first digit identifies a general class, or series, characterized by its main alloying elements.

3000 SERIES

Good Corrosion Resistance

Fair Strength

USES: Roofing, Siding, Gutters

5000 SERIES

Good Corrosion Resistance

Good Strength

USES: Marine Applications

6000 SERIES

Good Corrosion Resistance

Excellent Strength

USES: Structural, Pipe

FLAP DISCS FOR GRINDING & FINISHING

Weiler's abrasive flap discs grind and finish in one step, saving you time and money. There's no switching from a Type 27 grinding wheel to a resin fiber disc.



Tiger Ceramic Saber Tooth flap discs deliver maximum performance on aluminum and other hard to grind non-ferrous metals. A grinding aid protects high value parts from heat discoloration and the self-sharpening ceramic alumina grain provides cool, fast-cutting action, allowing you to do more work, more quickly. Discs are contaminant-free, with iron, sulfur and chlorine less than 0.1%.

APPLICATIONS: Heavy Stock Removal, Flat Surface Grinding, Edge Grinding, Fillet Grinding, Weld Grinding & Blending, Light Pressure Blending, Irregular Surfaces



50102

TIGER CERAMIC FLAP DISCS / Ceramic Alumina / Conical Style (Type 29) / Phenolic Backing



The conical shape of the disc maximizes surface contact for aggressive stock removal on flat surfaces.

Diameter	Grit Size	Max. RPM	Std. Pack	Cross-section diagrams	
				7/8" Arbor	5/8"-11 Hub
4-1/2"	36	13,000	10	50100	50104*
	40			50101	50105*
	60			50102	50106*
	80			50103	50107*
7"	36	8,600	10	50108	50112*
	40			50109	50113*
	60			50110	50114*
	80			50111	50115*

*Patent # 6,945,863



50139

TIGER CERAMIC HIGH DENSITY (HD) FLAP DISCS

Ceramic Alumina / Flat Style (Type 27) / Phenolic Backing



High Density discs are conformable to irregular surfaces. Smooth grinding, blending and finishing on flat surfaces.

Diameter	Grit Size	Max. RPM	Std. Pack	Cross-section diagrams	
				7/8" Arbor	5/8"-11 Hub
4-1/2"	40	13,000	10	50130	50133*
	60			50131	50134*
	80			50132	50135*
	80			50133	50136*
7"	40	8,600	10	50136	50139*
	60			50137	50140*
	80			50138	50141*
	80			50139	50142*

*Patent # 6,945,863

STYLE SELECTION



Conical Style
(Type 29)
15° – 35°



The angle maximizes surface contact for aggressive stock removal on flat surfaces.



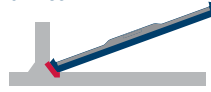
High Density Flat Style
(Type 27 HD)
0° – 15°



Conformable to irregular surfaces. Smooth grinding, blending and finishing on flat surfaces.

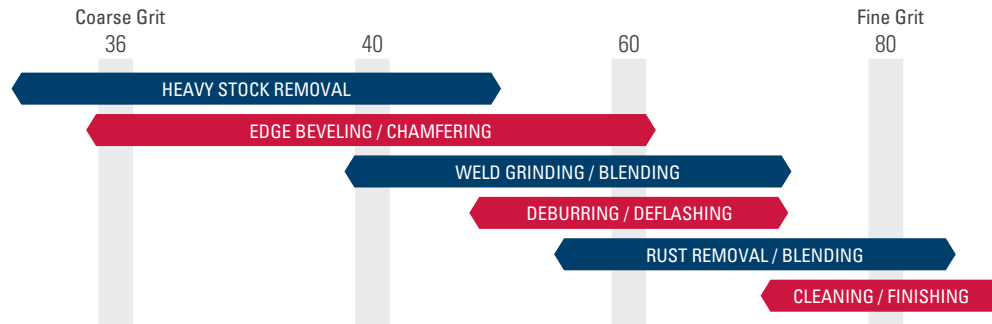


Hybrid / Flat Style
(Angled)
0° – 35°



Curved flaps for grinding fillet welds, T-joints, & hard to reach areas.

GRIT SELECTION



TIGER CERAMIC TRIMMABLE FLAP DISCS

Ceramic Alumina / Conical Style (Type 29) / Composite Backing

Weiler's Trimmable Tiger flap discs are designed for hard-to-reach areas such as fillet welds and irregular shapes while grinding on-edge without changing tools. The unique composite backing can be trimmed, exposing more abrasive material and extending disc life, resulting in lower grinding and finishing costs.



Diameter	Grit Size	Max. RPM	Std. Pack	Diagram	
				7/8" Arbor	5/8"-11 Hub
4-1/2"	40	13,000	10	50117	50121*
	60			50118	50122*
	80			50119	50123*

*Patent # 6,945,863



50121

TIGER CERAMIC ANGLED FLAP DISCS

Ceramic Alumina / Hybrid Style / Phenolic Backing

Tiger Angled flap discs deliver an aggressive, long life solution for grinding fillet welds, T-joints and other hard-to-reach places. Top-sized ceramic alumina grain offers a contaminant-free option that grinds cool, delivering maximum performance on aluminum and other hard-to-grind metals.



Diameter	Grit Size	Max. RPM	Std. Pack	Diagram	
				7/8" Arbor	5/8"-11 Hub
4-1/2"	40	13,000	10	51312	51315
	60			51313	51316
	80			51314	51317
5"	40	12,000	10	51318	51321
	60			51319	51322
	80			51320	51323



51318

NON-WOVEN FOR FINISHING

Weiler's non-woven products help you get the most demanding jobs done right and done fast.



Interleaf flap wheels provide a combination of non-woven and coated abrasive material to produce a very conformable product designed to be a finishing and surface blending tool. They are ideal for producing satin or decorative finishes on irregular or contoured surfaces.

APPLICATIONS: Decorative Finishing, Satin and Antique Finishes, Final Sanding, Soft Metal Finishing, Fine Burr Removal



54510

STEM-MOUNTED INTERLEAF FLAP WHEELS / Aluminum Oxide

Diameter	Face Width	Grit Size	Stem Size	Max. RPM	Standard Pack	Item Number
2"	1"	120	1/4"	13,700	10	54500
		180				54501
		320				54502
3"	1"	120	1/4"	8,600	5	54506
		180				54507
		320				54508
3"	2"	120	1/4"	8,600	5	54509
		180				54510
		320				54511

For cleaning and conditioning surfaces by hand. Unlike steel wool, hand pads are non-metallic, and do not produce "after-rust" on work surfaces. Hand pads can be used in wet applications.



51460

51457

HAND PADS

Size	Grain	Grade	Description	Standard Pack	Item Number
Industrial Grade: For producing satin finishes, light deburring surface prep, blend light scratches					
6" x 9"	Silicon Carbide	Ultra Fine	Finishing (Grey)	60	51434
6" x 9"	Aluminum Oxide	Medium	Economy General Purpose (Maroon)	60	51460
6" x 9"	Aluminum Oxide	Med/ Coarse	General Purpose (Maroon)	60	51444
6" x 9"	Aluminum Oxide	Heavy-Duty	Heavy-Duty (Tan)	40	51454
Commercial Grade: For cleaning and removing stains, removing corrosion and oxidation					
6" x 9"	Aluminum Oxide	Fine	Economy (Green)	400	51456
6" x 9"	Aluminum Oxide	Medium	Standard-Duty (Green)	60	51457
6" x 9"	Aluminum Oxide	Heavy-Duty	Heavy-Duty (Green)	60	51458
20% thicker than Standard Duty					

Surface conditioning discs have an open construction, scrim reinforcement and a superior resin system. These features minimize loading, heat buildup, fraying of disc edges, grain shedding and extend disc life, providing superior performance.

APPLICATIONS: Light Deburring, Surface Finishing, Blending Light Scratches



51532

TYPE R HUB STYLE CONDITIONING DISCS / General Purpose

Compatible with 3M Roloc™ back-up pads.

Diameter	Grade	Standard Pack	Item Number
2"	Very Fine (Blue)	50	51530
	Medium (Maroon)		51531
	Coarse (Brown)		51532
3"	Very Fine (Blue)	25	51533
	Medium (Maroon)		51534
	Coarse (Brown)		51535

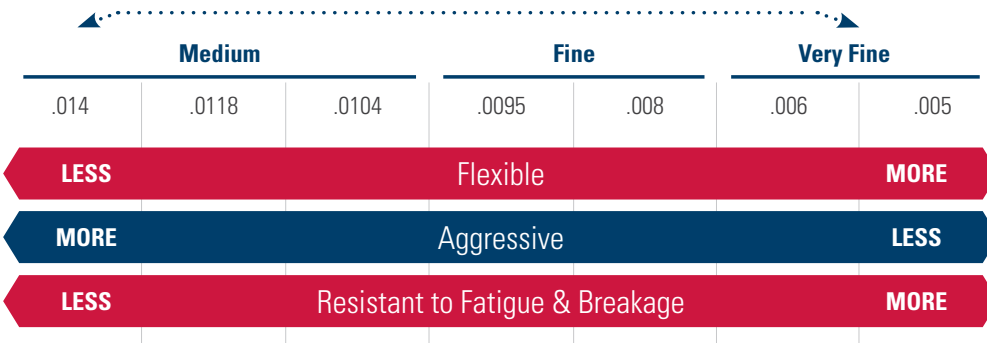
POWER BRUSHES FOR CLEANING

Superior construction, the highest quality materials, state-of-the-art manufacturing, and exacting quality standards deliver the most consistent brush performance. Each Weiler brush is designed to provide the best performance at the lowest cost-of-use.



WIRE SELECTION

To maximize brush life and reduce costs, always use the finest wire that will get the job done without excessive applied pressure or engagement with the brush.



FILL SELECTION



Stainless Steel Wire

Recommended for cleaning surfaces before welding to eliminate naturally occurring oxide layer.



Non-Ferrous Wire

(Brass, Bronze & Aluminum)
Can be used on aluminum to create decorative antique finishes.

CIRCULAR FLARED END BRUSHES / 302 Stainless Steel / 1/4" Stem

Features crimped wire fill that has been "pre-flared" to match the working angle of the brush at operating speed; suited for addressing broad and slightly contoured surfaces.



Diameter	Wire Size	Max. RPM	Standard Pack	Item Number
1"	.006	25,000	1	10042
	.008			10043
1-1/2"	.006	20,000	1	10045
	.008			10046
2-3/4"	.008	16,000	2	10048
	.006			10151
3"	.006	16,000	2	10050
	.008			96705
4"	.008	15,000	1	



10151

CRIMPED WIRE END BRUSHES / 302 Stainless Steel / Coated Cup / 1/4" Stem

Features a solid end construction and very flexible brushing action ideal for more demanding cleaning applications in corners and hard-to-reach areas. The plastic sleeve covering the cup protects the work surface from being scratched or marked.



Diameter	Wire Size	Trim Length	Overall Length	Max. RPM	Standard Pack	Item Number
1/2"	.006	7/8"	2-9/16"	25,000	10	11010
3/4"	.006	7/8"	2-9/16"	22,000	10	11013
1"	.006	7/8"	2-3/4"	22,000	10	11016



11013

CRIMPED WIRE END BRUSHES / 302 Stainless Steel / Nickel-plated Cup / 1/4" Stem

Features a solid end construction and very flexible brushing action ideal for more demanding cleaning applications in corners and hard-to-reach areas. **The nickel-plated cup is compliant with DOD MIL STD 2041D(SH).**



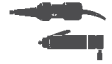
Diameter	Wire Size	Trim Length	Overall Length	Max. RPM	Standard Pack	Item Number
1/2"	.006	7/8"	2-9/16"	25,000	10	10370
3/4"	.006	7/8"	2-9/16"	22,000	10	10374
1"	.006	1"	2-7/8"	22,000	10	10378



10370

CONTROLLED FLARE END BRUSHES* / 302 Stainless Steel

Features uniquely trimmed crimped wire fill for more effective brushing action and greatly enhanced durability when cleaning corners and fillet welds.



10321

Diameter	Wire Size	Trim Length	Overall Length	Max. RPM	Standard Pack	Item Number
1/2"	.0104	7/8"	2-9/16"	25,000	10	10313
3/4"	.0104	7/8"	2-9/16"	22,000	10	10317
1"	.0104	1"	2-7/8"	22,000	10	10321

*Patent #8,186,000 B2

CRIMPED WIRE PILOT BONDING BRUSHES

302 Stainless Steel / Banded / Solid End / 1/4" Stem

Originally designed to clean around rivet holes in aluminum aircraft panels but may be used in other similar applications.



10056

Diameter	Wire Size	Trim Length	Overall Length	Pilot Diameter	Max. RPM	Standard Pack	Item Number
1/2"	.005	3/8"	2-1/4"	3/32"	20,000	10	10056
1/2"	.005	3/8"	2-1/4"	1/8"	20,000	10	10057
1/2"	.005	3/8"	2-1/4"	5/32"	20,000	10	10058
1/2"	.005	3/8"	2-1/4"	3/16"	20,000	10	10059

CONFLEX BRUSHES / 302 Stainless Steel / 1/4" Stem

Provides a flexible brushing action and consistent performance for demanding light-duty cleaning and deburring applications; features a wider face width to cover more area.



17608

Diameter	Wire Size	Face Width	Trim Length	Max. RPM	Standard Pack	Item Number
1-3/4"	.008	1/2"	5/8"	20,000	10	17608
3"	.008	1"	15/16"	20,000	10	17637

CONCAVE BRUSHES / 302 Stainless Steel / 1/4" Stem

Provides flexible brushing action for addressing corners and hard-to-reach areas.



17930

Diameter	Wire Size	Face Width	Trim Length	Max. RPM	Standard Pack	Item Number
1-1/2"	.006	1/4"	3/8"	20,000	10	17930
3"	.006	1/2"	15/16"	20,000	10	17936

UTILITY CRIMPED WIRE CUP BRUSHES / 302 Stainless Steel / 1/4" Stem

Provides flexible brushing action and consistent performance for more demanding light-duty cleaning applications.



14303

Diameter	Wire Size	Trim Length	Overall Length	Max. RPM	Standard Pack	Item Number
1-3/4"	.006	3/4"	2-5/16"	13,000	10	14303
2"	.008	5/8"	2-7/8"	13,000	10	14318
2-1/2"	.008	7/8"	3-1/8"	13,000	10	14320

302 STAINLESS STEEL

Weiler's stainless steel wire brushes are manufactured using wire drawn from Type 302 stainless steel. Although 302 stainless is typically a non-magnetic material, it is important to remember that the amount of cold-working that it experiences during the wire-drawing process causes it to become magnetic. For this reason, proper storage and handling of stainless steel brushes is critical to prevent cross-contamination and

"after rust" issues. Type 302 is widely used in the manufacture of power brushes for its relative durability and aggressive action as well as for its austenitic properties that insure the corrosion resistance of the materials on which it is applied. The use of a different grade of stainless steel wire is typically required in critical weld preparation and cleaning applications, but it will not address "after rust" and other cross-contamination issues.

SMALL DIAMETER WHEELS / 302 Stainless Steel

These wheels provide a flexible brushing action and consistent performance for light-duty cleaning and deburring applications requiring a small wheel. Ideal for wire stripping and thread cleaning.



Diameter	Wire Size	Arbor Hole	Face Width	Trim Length	Max. RPM	Standard Pack	Item Number
1"	.003	1/4"	3/16"	1/4"	20,000	10	16461
	.005						16471
1-1/4"	.006	1/4"	1/4"	3/8"	20,000	10	16511
	.008						16521
1-1/2"	.006	3/8"	1/4"	7/16"	20,000	10	16702
	.008						16712
2"	.005	1/2"	3/8"	3/4"	20,000	10	16833
	.008						16843
3"	.006	1/2"-3/8"	5/8"	1"	20,000	10	16933
	.008						16943



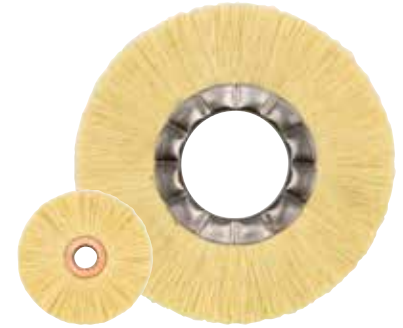
16712

TAMPICO WHEELS / Tampico Fiber

Ideal for light-duty surface cleaning and scrubbing applications as well as scratch-free finishing and polishing. Natural fiber such as Tampico holds abrasive compounds well and can be used for deburring, edge blending, and polishing applications.



Diameter	Arbor Hole	Face Width	Trim Length	Max. RPM	Standard Pack	Item Number
2-1/2"	1/2"	1/2"	3/4"	20,000	10	17443
3"	1/2"	1/2"	1"	20,000	10	17453
6"	2"	5/8"	1-1/2"	6,000	10	20180
8"	2"	5/8"	2-1/2"	5,000	5	20190



17453

20180

PLATER'S WIRE WHEELS / Brass

These wheels feature a longer trim length and very small diameter wire size for producing fine satin and antique finishes on non-ferrous and precious metals.



Diameter	Wire Size	Arbor Hole	Face Width	Trim Length	Number of Rows	Max. RPM	Standard Pack	Item Number
3"	.003	1/4"	1/2"	1"	2	6,000	12	22021
4"	.004	1/4"	1"	1-1/4"	4	4,000	5	22061
6"	.005	1/4"	1"	1-7/8"	4	3,600	1	22241



22241

STANDARD TWIST BEVEL BRUSHES / 302 Stainless Steel

These wheels provide a heavy-duty brushing action with some flexibility; ideal for cleaning fillet welds and corners.



Diameter	Wire Size	Arbor Hole	No. of Knots	Face Width	Trim Length	Max. RPM	Standard Pack	Item Number
4"	.014	5/8"-11 UNC	20	3/8"	3/4"	12,500	1	13416
4-1/2"	.014	5/8"-11 UNC	20	3/8"	1"	12,500	1	13466



13416

CRIMPED WIRE WHEEL / 302 Stainless Steel

Brush provides a flexible brushing action and consistent performance for demanding light-duty cleaning and deburring applications.



Diameter	Wire Size	Arbor Hole	Face Width	Trim Length	Max. RPM	Standard Pack	Item Number
4"	.006	5/8"-11 UNC	1/2"	7/8"	14,000	5	00156



00156

SCRATCH BRUSHES FOR CLEANING

Weiler's scratch brush offering includes many block and handle types and sizes. Common applications include cleaning dirt, rust, scale, chips and paint; plating and welding operations.



44076

PLATER'S BRUSHES / 302 Stainless Steel / Hardwood Block

For general cleaning in the plating, metal finishing, aircraft and missile industries. Also used with inert arc aluminum welding.

Block Size	Brush Length	Number of Rows	Trim Length	Standard Pack	Item Number
.006 Stainless Steel Wire					
10" x 1-1/8"	5"	4 x 18	1"	12	44240
13" x 7/8"	5-1/2"	3 x 19			44660
13" x 1-1/8"	5-1/2"	4 x 19			44232



44075

SMALL HAND SCRATCH BRUSHES / 302 Stainless Steel

Ideal for cleaning and prepping surfaces.

Block Size	Block	Number of Rows	Trim Length	Standard Pack	Item Number
.006 Stainless Steel Wire					
7-1/2" x 1/2"	Plastic	3 x 7	1/2"	36	44075
7-1/2" x 1/2"	Wood	3 x 7	1/2"		44167
7-3/4" x 3/8"	Wood	3 x 7	1/2"		44551 *
8-3/4" x 1/2"	Wood	2 x 9	5/8"		95013
.008 Crimped Aluminum					
6-3/4" x 1-5/8"	Wood	6 x 9	5/8"	12	95151
8-3/4" x 1/2"	Wood	2 x 9	5/8"	36	44251

*Wire drawn



44551



95151

For the full offering of Weiler products, please refer to our Full Line Catalog or visit our website. To discuss specific requirements with a product specialist call our applications hotline at 888.299.2777.

