

*The Brand Pros Demand*

**TILLMAN™**



Catalog No.500



# Supplying Craftsmen since 1928

## INDEX

Page	Item
4-11	Welding Gloves
12-13	TIG Gloves
14-15	MIG Gloves
16-17	TrueFit Performance Gloves
18-21	Drivers Gloves
21-23	Winter Gloves
24-28	Leather Work Gloves
29	Cotton, Jersey, String Knit Gloves
30	Hot Mill, Chore, Terry Gloves
31-33	Coated Gloves
34-36	High Heat Gloves
37	Back Hand Pads
37-39	Welding Accessories
40-42	Leather Jackets & Cape Sleeves
43-44	Leather Aprons
45	Leather Sleeves, Overalls
46	Foot, Leg Protection
47	Medium Weight Protective Clothing
48-52	Lightweight Protective Clothing
53	Aluminized Protective Clothing
54-56	Welding Blankets, Roll Goods
57-59	Welding Curtains, Screens
60	Track Mounted Rolling Curtains
61-62	Strip Curtains
63	Merchandising and Display Aids
64	Premium Protection Kit

## The Brand Pros Demand

Over 75 years ago, John Tillman worked as a welder in the oil fields of Southern California. Frustrated with the quality and performance of leather gloves and garments available, he decided to start his own factory in 1928. His goal was to provide his friends with the best quality products by utilizing great designs, the finest raw materials, and superior craftsmanship. Word of Tillman's quality spread rapidly throughout the country, and over time, professionals in other industries began asking for additional styles to meet their specific needs.



## The Tillman Difference

Every product counts. Hundreds of companies around the world manufacture competing products. Foreign or domestic, leather or cotton, high volume or low volume, high price or low price, their products usually meet acceptable standards. But Tillman aspires to something greater; we want every worker to be more productive, more comfortable, and safer with Tillman products. There are no shortcuts taken when manufacturing our products. Why, because every product counts.

## Design

Design is critical for superior performance. Tillman has a seventy-five year history of listening to its customer base. When a new process arrives on the market, we quickly develop new products. Yet Tillman is more than just form meeting function, our products look great.



Tillman gloves, apparel, accessories, screens, blankets, and all other products are warranted against defects in the manufacturing process only. Because applications vary, no use warranty is implied or intended. Working temperatures and recommended applications are presented without guarantee or responsibility on Tillman's part. Information given in this catalog is intended as a guideline only. It is the buyer's responsibility to determine if our products will adequately protect the user. A careful analysis should be made before selecting protective equipment for each particular work environment. As testing and modifications are ongoing in the industry, Tillman reserves the right to change recommendations as further knowledge is gained.

Information in this catalog is subject to change. Some products are not standard stock items and may require additional lead time. Please contact us at 800-255-5480 for the latest updates and information.

## Raw Material Selection

Tillman's selection of raw materials is unsurpassed in the industry. Hides ranging from elk, deer, goat, cowhide, and pigskin are rigorously inspected when received at our factories. We buy the best FR cotton, the best fiberglass, and the best aluminized fabrics. It's easy to cut corners. Tillman will not because product performance and consistency are everything. That's why most tradesmen ask for Tillman more than any other brand.



## Which Material? For What Use?

One of the biggest questions we get at Tillman is, "Why do you have so many different types of materials, don't they all work about the same?" No, absolutely not. At Tillman we select specific materials for particular gloves and garments based upon the user's application and conditions.

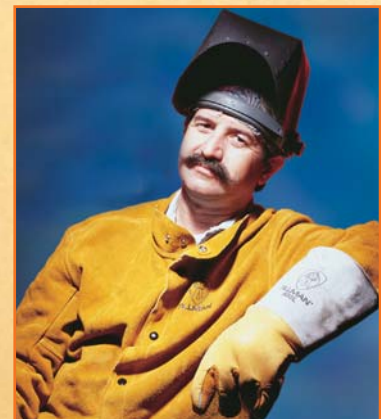
## Attention To Details

It's the details that enable a product to perform and last. For instance, we use more stitches per inch on our gloves because it makes them last longer and perform better over time. We inspect 100% of our imported welding clothing because consistent quality is the very foundation of the Tillman name. Go ahead, put our product side-by-side with our competitors. You can see the difference. Then put them on and you will feel the difference.



## Timeless Craftsmanship, Tomorrow's Technology

Our entire line of products is easily accessible through our web site at [www.jtillman.com](http://www.jtillman.com). Designed for ease of use, our site provides all the information you'll need when deciding which Tillman product is right for your needs.

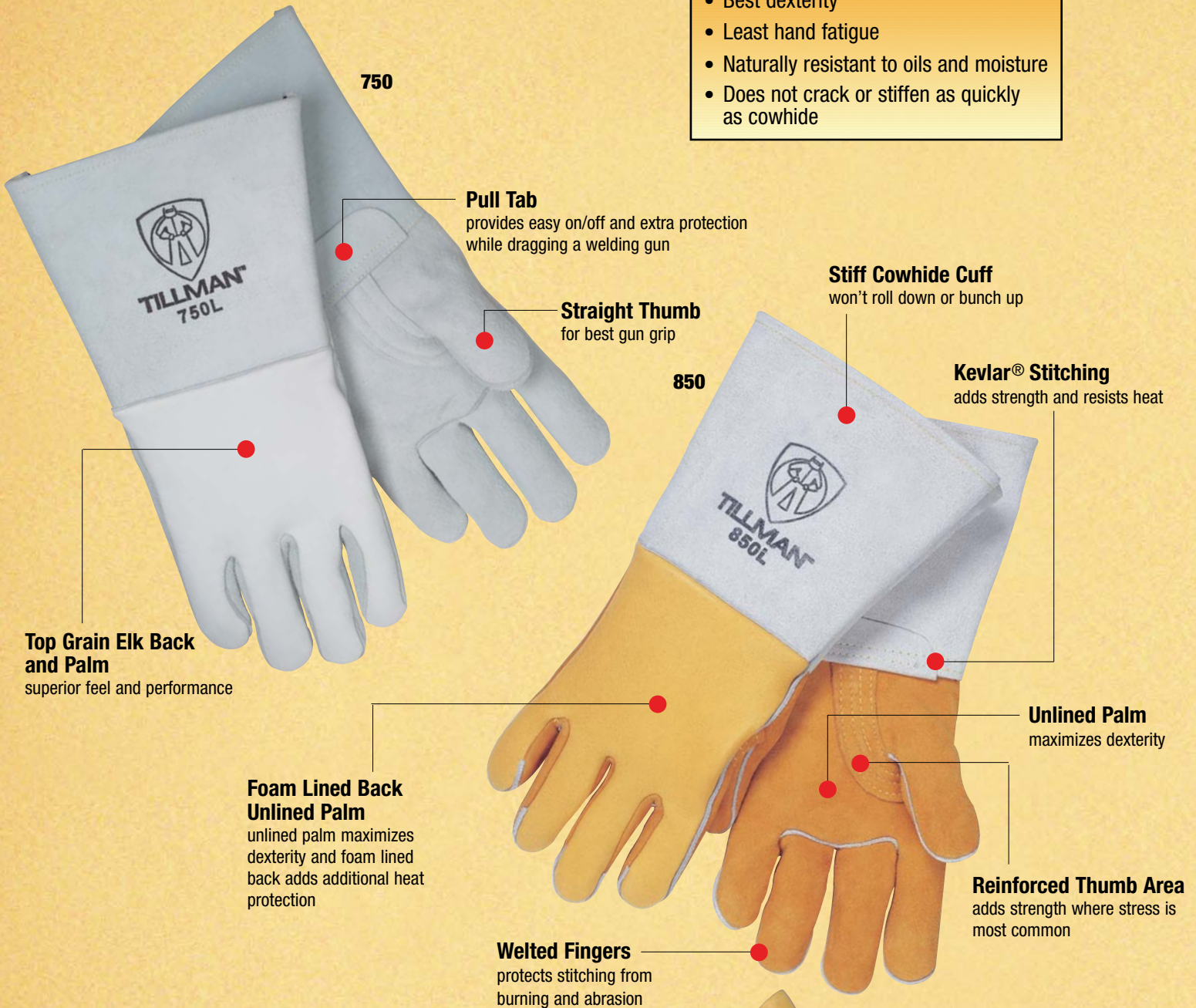


# Premium Top Grain Elk Welders

For over 75 years the Tillman 750 and 850 elk welders have reigned supreme as the ultimate in comfort and protection for the welding craftsman.

**Why Elk?**

- Best dexterity
- Least hand fatigue
- Naturally resistant to oils and moisture
- Does not crack or stiffen as quickly as cowhide



**750**

**Pull Tab**  
provides easy on/off and extra protection while dragging a welding gun

**Straight Thumb**  
for best gun grip

**Top Grain Elk Back and Palm**  
superior feel and performance

**Foam Lined Back Unlined Palm**  
unlined palm maximizes dexterity and foam lined back adds additional heat protection

**850**

**Stiff Cowhide Cuff**  
won't roll down or bunch up

**Kevlar® Stitching**  
adds strength and resists heat

**Unlined Palm**  
maximizes dexterity

**Reinforced Thumb Area**  
adds strength where stress is most common

**Welted Fingers**  
protects stitching from burning and abrasion

## Key Facts

	<b>750</b>	<b>850</b>	<b>945</b>
<b>Material</b>	<b>Pearl Elk</b>	<b>Golden Elk</b>	<b>Golden Elk</b>
<b>Length</b>	Full 14" length	Full 14" length	Full 14" length
<b>Size</b>	S, M, L, XL, 2X	S, M, L, XL	L, XL
<b>Also Available In</b>	750N – Nomex® back 750LL – Left hand only 750MLL – Size M, left hand only	850N – Nomex® back 850LL – Size L, left hand only	

**945**

**Tillman's Only All Elk Glove**  
superior feel and comfort with all wool interior for extra heat protection

# Premium Top Grain Pigskin, Cowhide Welders



495

## 495 FEATURES

- Brown reverse grain pigskin is soft on the hand with rugged exterior surface
- Full 14" length
- Kevlar® stitching resists heat and adds strength
- Cotton/foam lining for maximum moisture absorption and heat protection
- Straight thumb for best gun grip
- Weltd fingers protect stitching
- Pull tab for extra protection when dragging welding gun
- Size – S, M, L, XL

*Pigskin's natural resistance to oil and water makes it the welder's best choice for use in these conditions.*

## 650 FEATURES

- Rugged top grain pearl cowhide
- Full 14" length
- Kevlar® stitching resists flame and adds strength
- Cotton/foam lining for maximum moisture absorption and heat protection
- Straight thumb for best gun grip
- Weltd fingers protect stitching
- Reinforced thumb area for longer lasting gripping power
- Pull tab for easy on/off and extra protection when dragging welding gun
- Size – M, L, XL



650

*The 650 has all the features of our renowned 750 but made with top grain cowhide for increased durability.*

## Which lining is best for you? (dexterity vs. maximizing heat/cold protection)



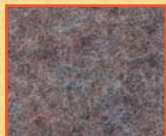
### Cotton

- Maximum moisture absorption
- Best dexterity for basic welding



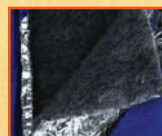
### Cotton/Foam

- Cotton layer for moisture
- Foam layer for heat protection and cold weather use



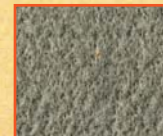
### Wool

- Designed for higher heat and cold applications



### Aluminumized Wool Lining

- Adds enhanced heat protection over standard wool lining



### Nomex

- Inherently flame resistant
- Best insulation

# Premium Side Split Cowhide Welders

MADE IN THE USA

## 810, 869 FEATURES

- Premium domestic side split cowhide
- Full 14" length
- Kevlar® stitching resists heat and adds strength
- Cotton/foam lining for maximum moisture absorption and heat protection
- Wing thumb for best comfort and use
- Weltd fingers protect stitching
- Size - L

### Also available in:

- 810LL - Left hand only
- 812- Wool lined
- 869LL - Left hand only

**810**  
Bourbon Brown

**869**  
Red

## Why Domestic Side Split Leather?

- 100% USA made means USA hides and USA tanning
- Highest most consistent standards
- Tighter thickness tolerances
- More uniformity in tanning process
- Greater strength, greater softness
- Longer lasting

*For over 75 years Tillman has been committed to manufacturing our super premium grade side split welding gloves here in the United States.*

**810-23**

**810-18**

**810-18**

Same great features as 810 with 18" length for extra protection

**810-23**

Also available in 23" length; includes cinch buckle to keep glove on arm

# Premium Side Split Cowhide Welders

COTTON LINED

Tillman's Best Cotton Lined Import Welder



1200

**Cotton Lined**  
gives welders the best dexterity and moisture absorption

**Pull Tab**  
provides easy on/off and extra protection while dragging a welding gun

**Double Reinforced Thumb**  
adds strength where stress is most common

**Straight Thumb**  
best design for gripping welding guns

**Kevlar® Stitching**  
adds strength and resists heat

**Welted Fingers**  
protects stitching from burning and abrasion

## 1200 FEATURES

- Premium bourbon brown side split cowhide
- Full 14" length
- Cotton lined
- Kevlar® stitched
- Reinforced thumb
- Pull tab reinforcement
- Welted fingers
- Size - L

Also available in:

- 1200LL - Left hand only
- 1203 - Three finger version



1203

## 1050, 1100 FEATURES

- Made from premium side split cowhide
- Full 14" length
- Cotton lined
- Wing thumb
- Kevlar® stitched
- Welted fingers
- Size - L

Also available in:

- 1050LL - Left hand only
- 1050-18 - 18" length

1050  
Bourbon Brown



1050-18  
18" Long



## Side Split Cowhide vs. Shoulder Split Cowhide

- Side split has **increased density** in its fiber structure –  
**Result:** better **uniformity**, greater **strength**, and increased **durability**.

1100  
Blue



# Premium Side Split Cowhide Welders

COTTON / FOAM LINED

**Kevlar® Stitching**  
adds strength and resists heat

1250

*Our premium insulated, double reinforced thumb collection is available in five popular colors.*

**Wing Thumb Design**  
most natural feel and best for all-around welding work

**Double Reinforced Thumb**  
extra protection on key thumb stress areas to maximize wear and protection

**Cotton/Foam Lining**  
gives welders additional heat protection but still absorbs moisture

**Welted Fingers**  
protects stitching from burning and abrasion



## Key Facts

	1150	1205	1250	1260	1270
<b>Material</b>	Bourbon Brown Side Split Cowhide	Black Side Split Cowhide	Blue Side Split Cowhide	Green Side Split Cowhide	Red Side Split Cowhide
<b>Length</b>	Full 14" length	Full 14" length	Full 14" length	Full 14" length	Full 14" Length
<b>Size</b>	L	L	S, M, L, XL	L	L
<b>Also Available In</b>			1250LL- Left hand only 1020 - Select shoulder split cowhide		





# Premium Side Split Cowhide Welders

COTTON / FOAM LINED



## 1075 FEATURES

- Red, blue, pearl side split cowhide
- Cotton/foam lining for maximum moisture absorption and heat protection
- Double reinforced thumb
- Kevlar® stitching
- Weltd fingers
- Size – L

**1075**  
Red, Blue, Pearl

**Cotton/Foam Lining**  
gives welders additional heat protection but still absorbs moisture



**1080**  
Blue

*Feature For Feature An Extraordinary Value*

## 1080 FEATURES

- 14" length
- Cotton/foam lining for maximum moisture absorption and heat protection
- Reinforced wing thumb
- Kevlar® stitching
- Weltd fingers
- Size - L
- **Also available in:**  
1080LL – Left hand only



**1204**  
Bourbon Brown

## Double Reinforced Leather Palm

adds extra wear resistance and great for holding hot stingers and MIG guns using large diameter rod and wire

## 1204 FEATURES

- 14" length
- Cotton/foam lining for maximum moisture absorption and heat protection
- Double reinforced palm
- Wing thumb
- Kevlar® stitching
- Weltd fingers
- Size - L

# Select Shoulder Split Cowhide Welders

COTTON LINED

## 1010 FEATURES

- Brown **select** shoulder split cowhide
- Cotton lined for comfort
- Straight thumb for best gun grip
- Reinforced thumb area for added protection and strength
- Weltd fingers protect stitching
- Kevlar® stitching resists heat and adds strength
- Size – L, XL
- **Also available in:**  
1010LL - Left hand only  
1012 -Economy version

1010



## "Select" Shoulder vs "Standard" Shoulder

When cutting shoulder leather, Tillman craftsmen "select" the best part of the hide with the tightest and densest fiber structure. Only these cuts can be called **SELECT**.

## 1005 FEATURES

- Black **select** shoulder split cowhide
- 14" length
- Wing thumb
- Weltd fingers
- Kevlar® stitching
- Size – L

1005



# Slightly Select Shoulder Split Cowhide Welders

COTTON / FOAM LINED

## 1015, 1018 FEATURES

- 14" length
- Cotton/foam lining
- Kevlar® stitching
- Weltd fingers
- Reinforced wing thumb
- Size - L

Also available in:  
1015LL – Left hand only  
1018WB – Size XS

1015  
Bourbon Brown



1018  
Blue



**Reinforced Thumb**  
extra protection in  
high wear area



# Shoulder Split Cowhide Welders

COTTON/FOAM LINED

## Small Hands Welders

### 1105W FEATURES

- Smaller size for women's hands
- 12" length
- Cotton/foam lining
- Wing thumb
- Kevlar® stitching
- Weltd fingers
- Size - 2XS, XS

Also available in:  
1105WBLL – Left hand only



**1105W**  
**Blue**

## Pigskin Split

### 1045 FEATURES

- Made from thinner pigskin split for enhanced dexterity
- Naturally breathable and great in wet and oily conditions
- 14" length
- Cotton/foam lining
- Wing thumb
- Kevlar® stitching
- Weltd fingers
- Size - L



**1045**  
**Brown**



# Shoulder Split Cowhide Welders

COTTON LINED

### 1001, 1000 FEATURES

- Standard shoulder split cowhide
- 14" length
- Cotton lined for comfort
- Wing thumb
- Weltd fingers
- Sewn with cotton thread
- Size - L

Also available in:  
1000LL - Left hand only  
1001LL - Left hand only

**1001**  
**Brown**



### 1000X

- Economy version of the 1000
- Size - L

**1000X**



**1000**  
**Pearl**

# TIG Welders - Premium

## TOP GRAIN KIDSKIN

Tillman's kidskin 24C and 24D TIG gloves have set the industry standard for over 30 years. Special tannage provides best overall combination of strength and softness.

24C  
4" cuff



24D  
2" cuff



### 24C, 24D FEATURES

- Made from premium pearl top grain kidskin
- Superior feel and dexterity
- Kevlar® sewn. Maximum stitches per inch for greater strength
- Straight thumb for best gun grip

#### Available in:

- 24C - 4" cuff
- 24D - 2" cuff
- Size - 24C - XS, S, M, L, XL, 2X  
24D - 2XS, XS, S, M, L, XL

### Why Kidskin?

- TIG welders tell us they like the great **feel, dexterity** and **wearability**. Kidskin allows wire to **pass smoothly** against the leather.



20



### 20 FEATURES

- Top grain pearl kidskin palm, brown split leather back
- Less expensive than all kidskin, cowhide back provides more heat protection
- Kevlar® sewn
- Straight thumb for best gun grip
- Available in 2" cuff
- Size - M, L, XL

## Top Grain Goatskin

### VALUE PRICED

1324



### 1324, 1328 FEATURES

- Made from pearl top grain goatskin
- Superior feel and dexterity
- Kevlar® sewn
- Seamless forefinger for enhanced feel
- Wing thumb for comfortable all-around use

#### Available in:

- 1324 - 2" cuff
- 1328 - 4" cuff
- Size - 1324 - S, M, L, XL  
1328 - S, M, L, XL
- 1360 - Economy version of 1328  
Size - M, L

1328



# TIG Welders

## Deerskin Split

Deerskin split leather gloves offer TIG welders the snugest and softest fit, resulting in the best feel and dexterity possible.



**25A**  
2" cuff



**25B**  
4" cuff



**25**  
No cuff

### 25, 25A, 25B FEATURES

- Made from pearl deerskin split leather
- Designed to maximize feel and dexterity while offering protection for TIG welders
- Kevlar® stitched with maximum stitches per inch for extra strength
- Straight thumb for best gun grip
- Three cuff lengths depending on preference (no cuff, 2", 4")
- Size - 25 - M, L  
25A, 25B - S, M, L, XL

**Caution –**  
Deerskin split leather is not suitable for heavy handling

## PREMIUM



**30**

### 30 FEATURES

- Made from pearl top grain pigskin
- Extremely durable, naturally breathable, and resistant to oil and water
- Kevlar® stitching resists flames. Maximum stitches per inch increases seam strength
- Straight thumb for best gun grip
- 4" cuff for added protection
- Size - S, M, L, XL

## Top Grain Pigskin

Pigskin offers TIG welders a soft but durable glove that is naturally breathable and great in wet and oily conditions.

## VALUE PRICED



**1335**

### 1335 FEATURES

- Made from top grain pigskin
- Kevlar® stitching resists flames
- Wing thumb for comfortable all-around use
- Seamless forefinger for enhanced feel
- 4" cuff for added protection
- Size - M, L



**1330**

### 1330 FEATURES

- Made from top grain pigskin
- Cotton stitching
- Clute cut has seams on top of glove for seamless palm area
- Straight thumb for best gun grip
- Seamless forefinger for enhanced feel
- 4" cuff for added protection
- Size - M, L

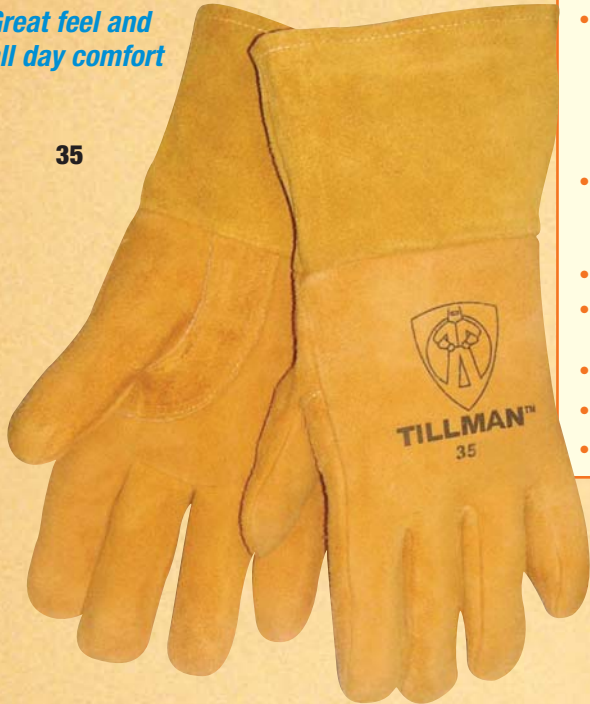
# MIG Welders

## TOP GRAIN DEERSKIN, PIGSKIN, COWHIDE

*MIG gloves are made with thicker leather than TIG gloves, providing more protection and durability, but still offering the needed dexterity for trigger and gun operation.*

*Great feel and all day comfort*

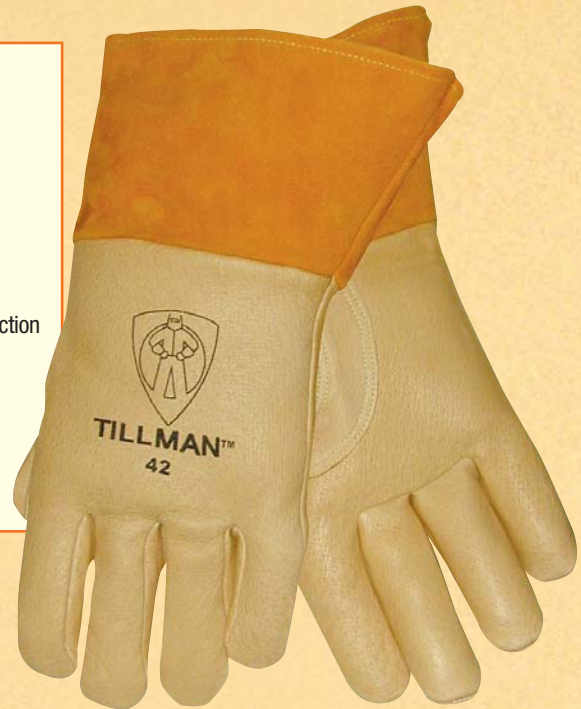
**35**



### 35, 42 FEATURES

- Made from top grain leathers
- 35 - Top grain deerskin – the ultimate in comfort
- 42 - Top grain pigskin – great in wet and oily conditions
- Both gloves have unlined palms for better feel and dexterity and foam lined backs for added heat protection
- Thumb strap reinforcement for added protection
- Kevlar® stitching resists heat, maximum stitches per inch increases seam strength
- Straight thumb for best gun grip
- 4" cuff for added protection
- Size - S, M, L, XL

**42**



*Great in wet and oily conditions*

### 34 FEATURES

- Made from extra heavyweight top grain cowhide
- Designed for heavy duty handling and MIG welding applications
- Unlined palm for better feel and dexterity and foam lined back for added heat protection
- Thumb strap reinforcement for added protection
- Kevlar® stitching resists heat; maximum stitches per inch increases seam strength
- Straight thumb for best gun grip
- 4" cuff for added protection
- Size - M, L

**34**



*Thickest, toughest leather*

**1350**



### 1350 FEATURES

- Made from top grain cowhide
  - Kevlar® stitching
  - Wing thumb
  - Seamless forefinger for enhanced feel
  - Excellent all around handling
  - 4" cuff for added protection
  - Size - S, M, L, XL
- Also available in:
- 1355 - "B" grade  
Size - S, M, L, XL
  - 1355LL - Left hand only  
Size - M, L
  - 1355RHO - Right hand only  
Size - M, L
  - 1356 - Economy version  
Size - S, M, L, XL

**GREAT VALUE**

# MIG Welders

## TOP GRAIN PIGSKIN

### 32 FEATURES

- Heavyweight top grain pigskin
- Soft but extremely durable. Great in wet and oily conditions
- Kevlar® stitching resists heat. Maximum stitches per inch increases seam strength
- Straight thumb for best gun grip
- 4" cuff for added protection
- Size - S, M, L, XL



32

### 32K FEATURES

- Made from heavyweight top grain pigskin. Great in wet and oily conditions
- Kevlar® lined palm for cut resistance
- Kevlar® stitching resists heat; maximum stitches per inch increases seam strength
- Straight thumb for best gun grip
- 4" cuff for added protection
- Size - S, M, L, XL



32K

*Kevlar® cut resistant lining for heavy MIG welding and handling.*

# MIG Welders

## DEERSKIN, COWHIDE SPLIT

26A  
2" cuff



### 26A, 26B FEATURES

- Made from heavyweight pearl deerskin split leather
- Heavyweight leather offers additional heat protection while offering excellent dexterity and feel for MIG welders
- Kevlar® stitching with maximum stitches per inch for extra strength
- Straight thumb for best gun grip
- Two cuff lengths, 2" or 4" depending on preference
- Size - M, L

26B  
4" cuff



### 1300 FEATURES

- Economy model, made from brown split cowhide
- Kevlar® stitching
- Straight thumb
- Seamless forefinger for enhanced feel
- 2" cuff
- Size - M, L

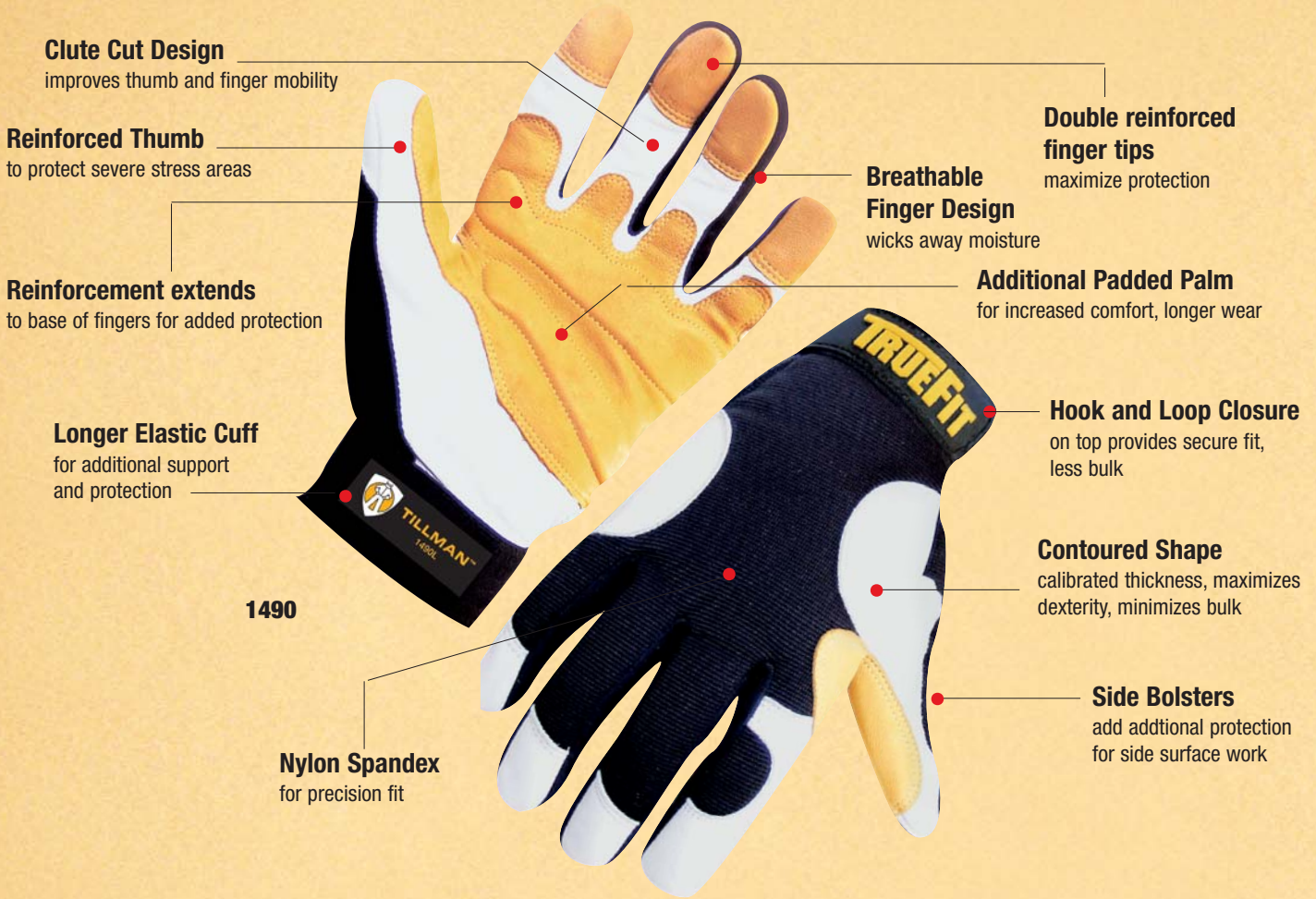


1300



The ultimate handling and performance gloves, TrueFit™ Ultra offers more reinforcement, durability, comfort, and value than any gloves in their class on the market.

PREMIUM TOP GRAIN GOATSKIN, PIGSKIN



Key Facts

	1490	1491	1492	1495	1496
<b>Palm Leather Color</b>	Top Grain Goatskin Pearl/Gold	Top Grain Goatskin Black	Top Grain Goatskin Pearl/Gold	Top Grain Goatskin Pearl/Gold	Top Grain Pigskin Gold
<b>Back Spandex Color</b>	Black	Black	Black	Blue	Black
<b>Size</b>	S, M, L, XL, 2X	M, L, XL	S, M, L, XL, 2X	M, L, XL, 2X	M, L, XL, 2X

1491 - Same as 1490, with black leather

1492 - Fingerless

1495 - Same as 1490 with Thinsulate™ winter lining

1496 - Top Grain Pigskin with synthetic, non-slip palm and finger tip reinforcement



Great for wet and oily conditions





TrueFit™ performance gloves are great for any application where fit, comfort, and protection are paramount.

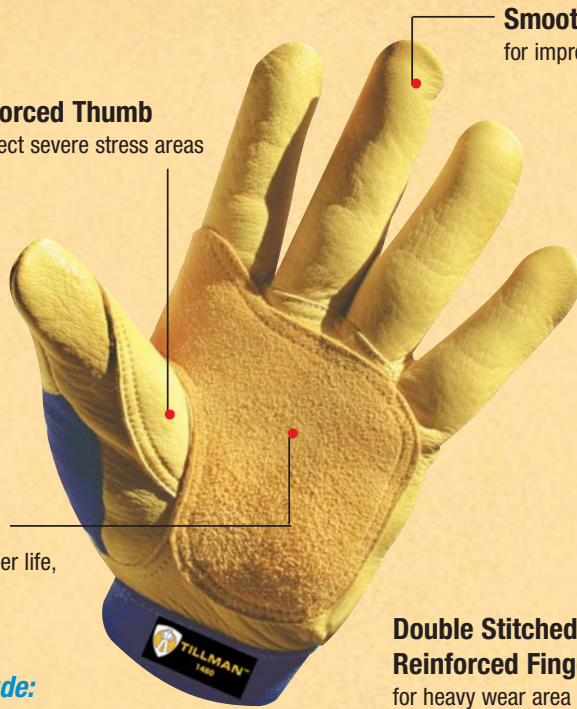
## PREMIUM TOP GRAIN DEERSKIN, COWHIDE, GOATSKIN

All natural top grain leather for superior durability. Snug fit for best dexterity.

**1480**  
Top Grain Deerskin  
most comfortable

**“Rough Side Out”**  
reinforced palm for longer life,  
better gripping power

- Possible uses include:
- Warehouse Handling
  - Maintenance Work
  - Power Tool Handling



**Reinforced Thumb**  
to protect severe stress areas

**Smooth Surface Fingers**  
for improved handling

**Nylon Spandex**  
for precision fit

**Double Stitched, Reinforced Fingertips**  
for heavy wear area protection

**Elastic Cuff**  
with hook and loop closure  
provides secure fit, less bulk



**Contoured shape,**  
calibrated thickness,  
maximizes dexterity,  
minimizes bulk

### Key Facts

	1470	1475	1478	1480	1485
<b>Back Spandex Color</b>	Black	Black	Camouflage	Blue	Pearl
<b>Palm Leather Color</b>	Top Grain Goatskin Pearl	Top Grain Cowhide Gold	Top Grain Cowhide Black	Top Grain Deerskin Gold	Top Grain Pigskin Pearl
<b>Size</b>	S, M, L, XL, 2X	S, M, L, XL, 2X	S, M, L, XL, 2X	S, M, L, XL, 2X	M, L, XL, 2X



**1470 - Top Grain Goatskin**  
for best dexterity



**1475 - Top Grain Cowhide**  
rugged, long lasting



**1478 - Top Grain Cowhide**  
smooth palm, camo back



**1485 - Top Grain Pigskin**  
naturally moisture resistant,  
Thinsulate™ winter lined

# Drivers

PREMIUM TOP GRAIN DEERSKIN, COWHIDE, PIGSKIN, GOATSKIN

*Superior comfort  
and dexterity*

864



## Premium Top Grade Deerskin

### 864, 866 FEATURES

- Made from soft, supple, top grain deerskin, unlined
- 864 - Gold
- 866 - Black
- Extremely comfortable and offers great feel and dexterity
- Double stitching on forefinger provides extra strength
- Keystone thumb provides natural feel and added protection
- Size - S, M, L, XL

866



## Top Grain Cowhide

**HEAVY  
DUTY**

### 764 FEATURES

- Made from heavyweight top grain cowhide, unlined
- Heavier weight is great for warehouse handling, spot welding and jobs that demand extra durability
- Kevlar® stitching with maximum stitches per inch for extra strength
- Seamless forefinger for multiple applications
- Slip-on style cuff
- Size - S, M, L, XL



764

*Best in wet / oily  
conditions*

## Pigskin

### 730 FEATURES

- Made from heavy brushed reverse grain pigskin, unlined
- Naturally breathable and resistant to oil and water
- Keystone thumb provides natural feel and added protection
- Inseam on forefinger designed for multiple applications
- Size - S, M, L, XL



730

*Top in abrasion  
resistance*

1415



## Goatskin

### 1415 FEATURES

- Made from top grain goatskin, unlined
- Excellent feel and dexterity
- Great tensile strength and abrasion resistance
- Keystone thumb provides natural feel and added protection
- Double stitching on forefinger provides extra strength
- Size - S, M, L, XL

# Drivers

## TOP GRAIN COWHIDE

*Tillman cuts top grain cowhide drivers gloves out of side leather, not lower quality belly leather. Side leather's uniform thickness and tensile strength offers consistent sizing and wearability.*

**1420, 1422, 1430**



**Straight thumb**



### 1420, 1422, 1430 FEATURES

- Made from top grain cowhide
- Double stitching on forefinger provides extra strength
- Straight thumb for best grip
- Size - S, M, L, XL
- Models -
  - "A" Grade - 1420
  - "B" Grade - 1422
  - "C" Grade - 1430

## Top Grain Leather Grades

### • A-Grade

Best quality, tight grain, uniform thickness and tensile strength. Provides best fit and durability. For those who want the best.

### • B-Grade

Good industrial quality. For high volume users.

### • C-Grade

For economy minded users.

### HEM COLOR SIZING CODE

<b>RED</b> –	Small
<b>GREEN</b> –	Medium
<b>BROWN</b> –	Large
<b>BLUE</b> –	X-Large

**1424, 1426, 1436**

### 1424, 1426, 1436 FEATURES

- Made from top grain cowhide
- Double stitching on forefinger provides extra strength
- Keystone thumb provides natural feel and added protection
- Size - S, M, L, XL
- Models -
  - "A" Grade - 1424
  - "B" Grade - 1426
  - "C" Grade - 1436



**Keystone thumb**



## Why Top Grain?

- Most durable part of hide
- Long lasting
- Enhanced protection

### 1421, 1423 FEATURES

- Same features as 1424 but includes additional pull strap adjustor
- Size - S, M, L, XL
- Models -
  - "A" Grade - 1421
  - "B" Grade - 1423

**1421, 1423**



**Pull Strap Adjustor**  
allows for snug fit

# Drivers

## COWHIDE/SPLIT, TOP GRAIN PIGSKIN, GOATSKIN, SPLIT

**GREAT VALUE**

### Top Grain Cowhide/Split



**1414**

#### 1414, 1418 FEATURES

- 1414 - "B" grade top grain cowhide palm, split leather back
- 1418 - "B" grade top grain cowhide palm with additional split cowhide patch, split leather back
- Split leather back reduces cost
- Double stitching on forefinger provides extra strength
- Keystone thumb provides natural feel and added protection
- Size  
1414 - XS, S, M, L, XL, 2X  
1418 - S, M, L, XL

Also available in:

1416 - Economy version of 1414



**1418**

**Cowhide Split Reinforcement Patch**

#### 1410 FEATURES

- Made from premium top grain pigskin
- Extremely durable, naturally breathable, and resistant to oil and water
- Inseam on forefinger designed for multiple applications
- Keystone thumb provides natural feel and added protection
- Size - S, M, L, XL

Also available in:

1410LL- Left hand only, M, L  
1410RHO - Right hand only, M, L  
1411 - Economy version

### Pigskin



**1410**

### Goatskin

#### 1428 FEATURES

- Made from thinner "B" grade top grain goatskin for enhanced feel
- Good for MIG/TIG welding as well as handling
- Straight thumb for best grip
- Inseam on forefinger designed for multiple applications
- Size - S, M, L, XL



**1428**

### Split

#### 1400, 1405 FEATURES

- Made from shoulder split cowhide
- Double stitching on forefinger provides extra strength
- Keystone thumb provides natural feel and added protection
- Size - S, M, L, XL

Also available in:

1401 - Economy version of 1400



**1400 Pearl**



**1405 Brown**

# Winter Gloves

## DRIVERS STYLE

Tillman drivers style winter gloves offer top grain and split cowhide leathers that include a range of winter linings to keep hands warm and protected.

### Thinsulate™ Lined



865

#### 865 FEATURES

- Top grain deerskin for superior comfort and dexterity
- Thinsulate™ lined
- Double stitched forefinger for strength
- Keystone thumb provides natural feel and added protection
- Size - M, L, XL



1419

#### 1419 FEATURES

- Top grain pigskin is naturally resistant to oil and water
- Thinsulate™ lined
- Keystone thumb provides natural feel and added protection
- Size - S, M, L, XL

### WINTER LININGS

Thinsulate™ – 3M developed premium insulation

ColdBlock™ – Tillman's poly/cotton insulating material

Pile – Heavyweight synthetic lambs wool material

Fleece – Lightweight, less bulky insulation

### Pile Lined

1450



#### 1450 FEATURES

- Select shoulder split cowhide
- Keystone thumb provides natural feel and added protection
- Pile lined
- Size - M, L, XL, 2X

### Fleece Lined

1425

#### 1404, 1412, 1425 FEATURES

- Select shoulder split cowhide (1404)  
Top grain pigskin (1412)  
Top grain cowhide (1425)
- Fleece lined
- Keystone thumb provides natural feel and added protection
- Double stitching on forefinger provides extra strength
- Size - S, M, L, XL



1404



1412



# Winter Gloves

## WORK GLOVE STYLE

Tillman work style winter gloves offer premium top grain leathers to value packed cowhide split leathers.

1565



### 1565, 1567 FEATURES

- Top grain pigskin palm with canvas back
- Thinsulate™ lined
- Safety cuff (1565)  
Knit wrist (1567)
- Wing thumb naturally fits contours of hand
- Size - L, XL

1567



1568  
Blue/Yellow



### 1568, 1571, 1572, 1573 FEATURES

- Select shoulder split cowhide palm with canvas back
- ColdBlock™ poly/cotton lined
- Waterproof lining keeps hands dry
- Heavy duty duck safety cuff
- Wing thumb naturally fits contours of hand
- Size - 1568 – L, XL  
1571, 1572, 1573 – L

### 1578 FEATURES

- Rugged cowhide split leather palm and knuckle strap with canvas back
- Cotton/foam lined for warmth
- Wing thumb naturally fits contours of hand
- Heavy duty duck safety cuff
- Size - L

1578



1571  
Red/Yellow



1572  
Green/Yellow



1573  
Black/Yellow



# Winter Gloves

## POLAR FLEECE

*Polar fleece offers a lightweight and warm alternative for winter work gloves.*



1581



1580



1584



1582



1585



1583

**Top Grain Pigskin Palm**  
for increased moisture resistance and durability

### Polar Fleece Gloves

- Soft, comfortable and warm polar fleece with ColdBlock™ lining
- Rugged leather palms
- Elastic wrist for snug fit, keeps out the cold



1586

### Key Facts

	1580	1581	1582	1583	1584	1585	1586
<b>Polar Fleece Color</b>	Blue	Blue	Red	Orange	Gray	Green	Camo
<b>Palm Material / Color</b>	Top Grain Pigskin Black	Cowhide Split Blue	Cowhide Split Blue	Cowhide Split Blue	Cowhide Split Blue	Cowhide Split Blue	Cowhide Split Black
<b>Size</b>	S, M, L, XL	S, M, L, XL	L	L	S, M, L, XL	L	L, XL

# Work Gloves

## TOP GRAIN COWHIDE, PIGSKIN

Tillman's premium grade work gloves are made from long lasting top grain cowhide, water and oil resistant pigskin, and heavyweight split leathers.

### Top Grain Cowhide

1562



#### 1562, 1563 FEATURES

- Top grain cowhide palm with canvas back
- Heavy duty safety cuff, 1562 - 2 1/2" length  
1563 - 4 1/2" gauntlet
- Wing thumb naturally fits contours of hand
- Size - 1562 - S, M, L, XL  
1563 - S, M, L, XL

1563



### Top Grain Leather vs. Split Leather

- Top grain is the most durable part of the hide. It lasts longer and gives better overall protection.

### Pigskin

1561



#### 1561 FEATURES

- Heavy duty reverse grain (smooth side inside glove) pigskin palm, canvas back
- 2 1/2" rubberized safety cuff
- Wing thumb naturally fits contours of hand
- Size - L

1561X



#### 1561X

- Economy version of the 1561
- Uses heavy duty pigskin split
- Size - L

1560



#### 1560 FEATURES

- Top grain pigskin palm, canvas back
- 2 1/2" rubberized safety cuff
- Wing thumb naturally fits contours of hand
- Size - L

1560X



#### 1560X

- Economy version of 1560
- Size - L



# Work Gloves

## SIDE SPLIT COWHIDE

Tillman's side split cowhide work gloves feature the best split leather resulting in longer lasting, more comfortable and better fitting gloves.

1526

Double Palm



### 1526, 1527 FEATURES

Both gloves feature:

- Premium side split cowhide
- Double palm for extra handling protection
- Kevlar® sewn for extra strength
- 2 1/2" rubberized safety cuff
- Cotton lined palm with unlined back
- Size - L

1527



Double Palm, Reinforced Fingers  
Full Leather Back, Thumb Strap  
- Tillman's BEST -



1525

Sewn with Kevlar® for extra strength

1500S



### 1525, 1500S FEATURES

Both gloves feature:

- Premium side split cowhide
- 1525 is Kevlar® stitched for extra strength
- 2 1/2" rubberized safety cuff
- Cotton lined palm with unlined back
- Size - S, M, L, XL

### SPLIT COWHIDE GRADE QUALITY

**SIDE (Premium)**

**Select Shoulder (Best)**

**Standard Shoulder (Better)**

**Economy Shoulder (Good)**

**Super Economy Shoulder (Economy)**

### 1524, 1528 FEATURES

Both gloves feature:

- Select shoulder split cowhide with full leather back
- Rubberized safety cuff
- Cotton lined palm with unlined back
- Size - L

Also available in:

- 1524K - 2 1/2" cuff, Kevlar® sewn
- 1524X - 2 1/2" cuff, economy version, cotton sewn
- 1528K - 4 1/2" cuff, Kevlar® sewn
- 1528X - 4 1/2" cuff, economy version, cotton sewn

1524  
2 1/2" cuff



1528  
4 1/2" gauntlet cuff

Full leather back works well for spot welding

# Work Gloves

## SELECT SHOULDER SPLIT COWHIDE

Tillman's select shoulder split cowhide work gloves offer enhanced quality and value over standard shoulder split gloves.

Double palms add extra strength and protection for heavy handling situations.

### Double Palm

1515



### 1515, 1515XD, 1516 FEATURES

Both gloves feature:

- Select shoulder split cowhide palm, canvas back
- Double palm for extra handling protection
- 1515 - 2 1/2" rubberized safety cuff  
1516 - 4 1/2" rubberized safety cuff
- Cotton lined palm with unlined back
- Size - L

Also available in:

- 1515X - Standard grade version of 1515
- 1515XD - Standard grade version; washable duck cuff
- 1515XX - Industrial grade version of 1515
- 1515W - Women's size



4 1/2" gauntlet cuff for extra protection

### Double Palm

1516



1515XD

### Double Palm Washable Duck Cuff

1500



### 1500 FEATURES

- Select shoulder split cowhide palm, canvas back
- 2 1/2" rubberized safety cuff
- Cotton lined palm with unlined back
- Size - L

### SPLIT COWHIDE GRADE QUALITY

Side (Premium)

SELECT SHOULDER (Best)

Standard Shoulder (Better)

Economy Shoulder (Good)

Super Economy Shoulder (Economy)

1500Y



### 1500Y, 1500YPP FEATURES

- 1500Y - Brown select shoulder split cowhide palm, canvas back
- 1500YPP - Brown patch palm select shoulder split cowhide, canvas back

Both gloves feature:

- Cotton lined palm with unlined back
- Size - L

Also available in:

- 1500YPPX - Economy version of the 1500YPP

1500YPP

### Heavyweight Patch Palm

GREAT VALUE



# Work Gloves

## SHOULDER SPLIT COWHIDE

*Tillman's industrial and economy grade shoulder split leather provides great durability at a reasonable price.*

**1505**  
Slightly Select



**1505X**  
Standard



**1505XD**  
Standard  
Washable  
Duck Cuff



**1505XX**  
Industrial



**1508**  
Economy



**1520**  
Standard  
4 1/2" gauntlet cuff



**1509**  
Economy  
4 1/2" gauntlet cuff



### 1505, 1505X, 1505XD, 1505XX, 1508 FEATURES

All gloves feature:

- Cowhide split palm, canvas back
- 2 1/2" rubberized safety cuff
- Cotton lined palm with unlined back
- Size - L (1505X, 1505XX, 1508)
- Size - M, L, XL, RHO, LL (1505)

1505 - Slightly select shoulder split cowhide

1505X - Standard shoulder split cowhide

1505XD - Standard shoulder split cowhide; washable duck cuff

1500W - Standard shoulder split cowhide, for extra small hands

1505XX - Industrial grade standard shoulder split cowhide

1508 - Economy shoulder split cowhide

### SPLIT COWHIDE GRADE QUALITY

Side  
(Premium)

Select  
Shoulder  
(Best)

STANDARD  
SHOULDER  
(BETTER)

ECONOMY  
SHOULDER  
(GOOD)

Super  
Economy  
Shoulder  
(Economy)

### 1520, 1509 FEATURES

Both gloves feature:

- 4 1/2" gauntlet cuff
- Rubberized safety cuff
- Cotton lined palm with unlined back
- Size - L

1520 - Standard shoulder split cowhide

1509 - Economy shoulder split cowhide

# Work Gloves

## ECONOMY SHOULDER SPLIT COWHIDE

*For high volume, economy minded users.*

**1511**  
Starch Cuff,  
Regular Palm



### 1511, 1511PP FEATURES

Both gloves feature:

- Economy shoulder split cowhide palm
- Cotton lined palm with unlined back
- 2 1/2" starch cuff
- Size - L
- **Also available in:**  
1511W - Women's size



**1511PP**  
Patch Palm

**1510**  
Denim Cuff,  
Regular Palm



### 1510, 1510PP FEATURES

Both gloves feature:

- Economy shoulder split cowhide palm
- Cotton lined palm with unlined back
- 2 1/2" denim cuff
- Size - L



**1510PP**  
Patch Palm

### SPLIT COWHIDE GRADE QUALITY

Side  
(Premium)

Select  
Shoulder  
(Best)

Standard  
Shoulder  
(Better)

ECONOMY  
SHOULDER  
(GOOD)

SUPER  
ECONOMY  
SHOULDER  
(ECONOMY)

**1512**  
Knit Wrist



### 1512 FEATURES

- Economy shoulder split cowhide palm
- Clute cut, cotton back
- Knit wrist
- Size - L
- **Also available in:**  
1512W - Women's size

# Cotton, Jersey, String Knit Gloves

Designed for general purpose lightweight work applications.

## Cotton

1530



### 1530, 1535 FEATURES

- 1530 - 8 oz., 100% cotton
- 1535 - 12 oz., 100% cotton
- Knit wrist
- 1530 Size - S, L
- 1535 Size - L
- Also available in:  
1531 - 8 oz., Economy version

## String Knit

1532



### 1532 FEATURES

- 8 oz., cotton/ polyester string knit
- Knit wrist
- Size - S, M, L
- Also available in:  
1532-3PK - 3 pack  
Size - L
- 1552 - Economy version  
Size - S, M, L

## Canvas with PVC Dots

### 1550 FEATURES

- 8 oz. canvas with PVC dots
- Knit wrist
- Size - S, L
- Also available in:  
1551 - Economy version

1550



### 1554 FEATURES

- 10 oz. canvas with orange PVC dots
- Knit wrist
- Size - L

1554



1532-3PK  
3 Pack

1533



### 1533 FEATURES

- 8 oz., cotton/ polyester string knit with plastic dots
- Better gripping power
- Knit wrist
- Size - S, L
- Also available in:  
1553 - Economy version  
Size - L

## Brown Jersey

### 1540, 1545 FEATURES

- 9 oz., 100% cotton brown jersey
- Knit wrist
- Size - S, L
- Also available in:  
1540-3PK - 3 pack  
Size - L
- 1541 - Economy version
- 1542 - With black dots

1540



1540-3PK  
3 Pack

Brown jersey with  
red fleece lining



1545

## Kevlar® Knit

Provides added  
cut and abrasion  
resistance.



962

### 960, 962 FEATURES

- Standard Weight 100% Kevlar® knit
- Knit wrist
- Size - M, L
- 962 - with PVC dots on both sides
- Also available in:  
965 - Heavy Weight  
100% Kevlar® knit

960



# Hot Mill, Chore, Terry Gloves

Tillman's Hot Mill, Chore, and Terry gloves incorporate multiple layers of material providing extra heat protection over standard cotton gloves.

1600



## Hot Mill

Good for use in foundries, forging, glass, and ceramics. Temperature rating of 250°F - 400°F.

1601



1626



1625

### 1600 FEATURES

- 30 oz., burlap lined, band top
- Size - L

### 1601 FEATURES

- 24 oz., 100% cotton, band top
- Size - L

### 1625 FEATURES

- 30 oz., burlap lined, 4" gauntlet
- Size - L

### 1626 FEATURES

- 24 oz., 100% cotton, 4" gauntlet
- Size - L

1630



## Golden Chore

Good for mild heat use and material handling.

### 1630 FEATURES

- 18 oz., golden chore, knit wrist
- Size - L

### 1640 FEATURES

- 18 oz., golden chore, 4" gauntlet
- Size - L

1640



1645



### 1645 FEATURES

- 18 oz. golden chore
- 4" gauntlet with turtle cuff
- Elastic back strip for snug fit
- Size - L

1570



## Terry Cloth

Good for handling metal parts and medium heat applications.

### 1570 FEATURES

- 24 oz., terry cloth, knit wrist
- Size - L

### 1575 FEATURES

- 24 oz., terry cloth, knit wrist
- 4" gauntlet
- Size - L

1575



Specially treated for welding

# PVC Coated Gloves

Tillman's PVC coated gloves with interlock lining are designed for liquid and slight chemical resistance as well as handling abrasive materials coated with grease and oils.

## Double Dipped Rough PVC

### 1705 FEATURES

- Double dipped, rough PVC exterior finish for better non-slip wet grip
- Interlock lining for comfort and moisture absorption
- 2" knit cuff
- Size - L



1705



Rough Finish

### 1715, 1716 FEATURES

- Double dipped, rough PVC exterior finish for better non-slip wet grip
- Interlock lining for comfort and moisture absorption
- 12" or 14" length
- Size - L



1715  
12" length



1716  
14" length

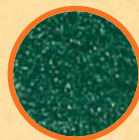
## Single Dipped Rough PVC

1717  
knit wrist



### 1717, 1718, 1719 FEATURES

- Single dip, dark green, rough PVC exterior finish
- Interlock lining for comfort and moisture absorption
- 1717 - Knit wrist  
1718 - 12" length  
1719 - 14" length
- Size - L



Rough Finish

1718  
12" length



1719  
14" length



## Single Dipped Smooth PVC



1700



Smooth Finish

### 1700 FEATURES

- Single dip, economy, smooth PVC exterior finish
- Interlock lining for comfort and moisture absorption
- 2" knit cuff
- Size - L



1710  
12" length

### 1710, 1714 FEATURES

- Single dip, economy, smooth PVC exterior finish
- Interlock lining for comfort and moisture absorption
- 12" or 14" length
- Size - L



1714  
14" length

# Latex Coated Gloves

Tillman's Latex Coated gloves are ideal for a number of tasks including general maintenance, shipping, receiving, assembly, concrete/brick/lumber handling

1538



## 1538 FEATURES

- Standard latex dipped string knit
- Smooth blue latex coating
- Provides added abrasion, snag and cut resistance for light duty applications
- Size - L

1539



## 1539 FEATURES

- Economy latex dipped string knit
- Lightweight red latex coating
- Size - L

**WARNING: Products contain natural rubber latex which may cause allergic reactions in some individuals.**

1760



Quality string knit, available in sizes

## 1760 FEATURES

- Premium latex dipped string knit
- Textured blue latex coating
- Stretch fabric cotton lining
- Excellent dexterity and feel
- Size - S, M, L, XL

# Crisscrossed PVC, Rubber, Vinyl Gloves

Designed for handling smooth, slippery or abrasive objects.

1720



## 1720 FEATURES

- Crisscrossed PVC on string knit for superior grip on corrugated and smooth edged surfaces
- Knit wrist
- Size - S, M, L, XL

1725



## 1725 FEATURES

- Rough, textured rubber surface, great for gripping
- Cut resistant
- Size - L

1730



## 1730 FEATURES

- Vinyl impregnated exterior
- Stretch fabric cotton lining
- Great handling and dexterity in packaging, shipping/receiving environments
- Size - L



# Nitrile Gloves

Nitrile gloves provide excellent resistance to punctures, cuts, snags, abrasion, oils and fuels.



1740



1750

## 1740, 1742 FEATURES

- Heavyweight nitrile rubber coating, cotton jersey lined
- High durability
- Extra resistance to oils, greases, and solvents
- 1740 – Knit wrist  
1741 – Lt. weight version of 1740  
1742 – Safety cuff  
1743 – Lt. weight version of 1742
- Size – 1740 – S,L  
1741 – L  
1742 – S, M, L, XL  
1743 – L



1742

## 1750 FEATURES

- Nitrile coating with soft interlock cotton lining
- Good dexterity
- Chemical splash resistant
- Size - L

# Nitrile, Polyurethane Coated Gloves

## 1761 FEATURES

- 15 gauge white nylon shell
- Good dexterity
- Light gray nitrile palm coated
- Abrasion resistant, breathable, great dexterity and gripping power
- Size - S, M, L, XL

Also available in:

1763 - Foam coated

**GREAT FOR HANDLING  
SMALL PARTS**



1761

## 1762 FEATURES

- 13 gauge white nylon shell
- Gray polyurethane palm coated
- Great breathability, dexterity, and gripping power
- Size - S, M, L, XL



1762

# High Heat

## ALUMINIZED

**WARNING:** Temperature guidelines are of material deterioration points and should NOT be construed as working temperatures. Multiple factors apply when determining proper levels of protection. It is the user's sole responsibility of determination whether the product is appropriate for the intended use, and complies with all health and safety regulations.

Aluminized gloves are designed to reflect higher heat temperatures and are available in a number of different configurations.

### Welding

**822**  
**ACK Back**



#### 822 FEATURES

- Aluminized Carbon Kevlar® back and cowhide palm
  - Designed for high heat and heavy spatter protection
  - Reinforced thumb
  - 14" length
  - Wool lined
  - Size - L
- Also available in:
- 822LL - Left hand only
  - 820 - Same glove except with AR back, for heat protection only
  - 818L - Aluminized leather back

**820**  
**AR Back**



**1265**

#### 1265, 1266 FEATURES

- Both gloves feature:
  - Premium blue side split cowhide
  - Aluminized wool lining for enhanced heat protection
  - Double reinforced thumb for extra protection in high stress areas
  - Kevlar® stitching for strength
  - Weltd fingers
  - Size L

- Also available in:
- 1265 - Glove only
  - 1266 - Includes glove and replaceable ACK snap-on back-hand pad
  - 1266LL - Left hand only glove and back-hand pad
  - 1266RHO - Right hand only glove and back-hand pad
  - 558 - Replacement ACK back-hand pad

**1266**

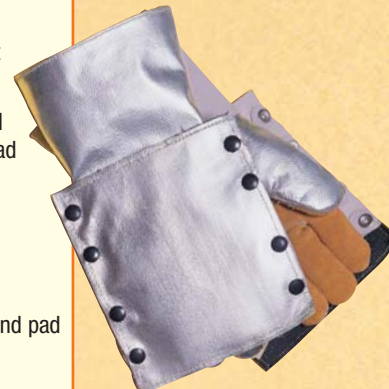


#### 820BHP FEATURES

- Glove made from aluminized rayon and cowhide with wool lining for extreme reflective heat
- Includes replaceable aluminized Kevlar®/black vermiculite coated fiberglass snap-on back-hand pad for high heat and heavy spatter protection
- 14" length
- Size - L
- 558 - Replacement ACK back-hand pad

- Also available in:
- 820BHPL - Left hand only

Four layers of protection, great for Innershield



**820BHP**

#### 950 FEATURES

- Elk palm, aluminized leather back, for medium heat protection only
- 14" length
- Wool lined
- Size - L



**950**

**WARNING:** Leather palms will not protect against heavy spatter or molten metal.

### Aluminized Glove Materials

#### Aluminized Leather (AL)

Designed for higher heat up to 500°F

#### Aluminized Rayon (AR)

Designed to reflect heat but will NOT resist spatter, up to 1500°F

#### Aluminized Carbon Kevlar® (ACK)

Designed to reflect heat and resist spatter up to 1500°F

### Handling

**993**



#### 993 FEATURES

- All aluminized carbon Kevlar®
- 14" length
- Double wool lined in palm
- Size - XL

#### 992 FEATURES

- Aluminized carbon Kevlar® back, Flextra® palm
- 14" length
- Double wool lined in palm
- Size - XL

- Also available in:
- 972 - with ACK back
  - 22 oz. PBI® palm

**992**



# High Heat

## FLEXTRA®, THERMAL LEATHER

TEMPERATURE RANGE 400°F — 1000°F

**WARNING:** Temperature guidelines are of material deterioration points and should NOT be construed as working temperatures. Multiple factors apply when determining proper levels of protection. It is the user's sole responsibility of determination whether the product is appropriate for the intended use, and complies with all health and safety regulations.

### High Heat Selection Criteria

Selecting a high heat glove takes careful attention. Please understand that applications may vary and no one material works best. Heat will eventually penetrate the glove. All gloves and mitts are made XL so they can be thrown off when heat gets too great. Contact a high heat specialist at Tillman with questions and requirements.

**When selecting a high heat glove, please determine the following:**

- How hot is the item you will be handling?
- How long will you be handling it?
- How much does it weigh?
- What is the outside texture of the item? (rough edges, smooth finish, etc...)



*Clute cut has no seams on palm, increases strength*

**990  
Glove**

#### 990, 995 FEATURES

- 22 oz. Flextra® palm and back with 24 oz. gold acrylic coated fiberglass cuff
- 14" Length
- Double wool lined in palm
- Sewn with Kevlar® thread
- Maximum temp. 600°F to 1000°F
- Size - XL

990 Also available in:  
990LL - Left hand only  
990RHO - Right hand only



**995  
Mitt**

**MITTS ARE REVERSIBLE**



**991**

#### 991 FEATURES

- 22 oz. Flextra® palm and back with 24 oz. gold acrylic coated fiberglass cuff
- 14" Length
- Leather reinforced palm and fingers for extra durability
- Double wool lined in palm
- Sewn with Kevlar® thread
- Maximum temp. 600°F to 1000°F
- Size - XL

*18" and 23" glove and mitt lengths are available in some styles*



**879**

### High Heat Material Facts

Material	Description	Maximum Temperature Rating
<b>Side Split Thermal Leather</b>	Specially tanned to withstand premature hardening	400°F
<b>Flextra®</b>	Non-asbestos 22 oz. combination of Kevlar®, Nomex® and fiberglass	600°F working and up to 1000°F for short durations
<b>PBI® / Kevlar®</b>	Designed for superior abrasion and heat resistance	22 oz.- 1000°F to 1500°F 45 oz.- 1500°F to 2000°F
<b>Vertex®</b>	A high performance vermiculite coated fiberglass. Offers high heat resistance but not recommended for heavy abrasion	2000°F

#### 879 FEATURES

- Brown side split cowhide thermal leather
- Tanned to withstand premature hardening
- 14" Length
- Wool lined
- Maximum temp. 400°F
- Size - XL

# High Heat

## PBI® EXTREME HEAT and VERTEX

TEMPERATURE RANGE 1000°F—2000°F

**WARNING:** Temperature guidelines are of material deterioration points and should NOT be construed as working temperatures. Multiple factors apply when determining proper levels of protection. It is the user's sole responsibility of determination whether the product is appropriate for the intended use, and complies with all health and safety regulations.

### PBI® Extreme Heat Gloves



**970  
Glove**

#### 970, 975 FEATURES

- 22 oz. PBI® palm and back with 24 oz. gold acrylic coated fiberglass cuff
- 14" Length
- Double wool lined in palm
- Maximum temp. 1000°F to 1500°F
- Size - XL



**975  
Mitt**

**MITTS ARE  
REVERSIBLE**



**980  
Glove**

#### 980, 985 FEATURES

- 45 oz. PBI® palm and back with 24 oz. Flextra® cuff for added heat protection
- 14" Length
- One layer of wool, one layer of Nomex®
- Maximum temp. 1500°F to 2000°F
- Size - XL

Also available in:  
982 - Same as 980, except 22 oz. PBI® back



**985  
Mitt**

### Vertex® Gloves

**WARNING: DO NOT use in high abrasive applications**



**980VG  
Glove**

#### 980VG, 985VG FEATURES

- 36 oz. Vertex®
- 14" Length
- Double wool lined in palm
- Maximum temp. 2000°F
- Size - XL



**985VG  
Mitt**

#### 988VGS, 988VGSX FEATURES

- 2000°F heat treated steel mesh
- 988VGS - 10" long cover mitt
- 988VGSX - 13" long cover mitt



**988VGS  
Cover Mitt**

designed to fit over the top of the 985VG

*Cover mitts are designed to be worn over standard mitts for extra heat protection and strength.*



**988VGSX  
Cover Mitt**  
designed to fit over the top of the 985VG

# Welding Accessories

## BACK - HAND PADS

Tillman's back-hand pads are designed to be worn over the back of a welding glove to provide extra protection in high heat situations.



### Standard Double Layer Protection

550



#### 550 FEATURES

- Top: Aluminized Carbon Kevlar®
- Bottom: Vermiculite coated fiberglass
- Leather and elastic straps
- 7 1/2" H x 5 3/4" W

### Economy Double Layer Protection

550X



#### 550X FEATURES

- Top: Aluminized Rayon
- Bottom: Acrylic coated fiberglass
- Leather and elastic straps
- 7 1/2" H x 5 3/4" W

### Standard Triple Layer Protection

552



#### 552 FEATURES

- Top: Aluminized Carbon Kevlar®
- Middle/Bottom: Two layers of vermiculite coated fiberglass
- Adjustable heavy duty leather straps with hook/loop closure
- 7 1/2" H x 5 1/2" W

554



#### 554 FEATURES

- Top: Aluminized Carbon Kevlar®
- Middle: Layer of 1500°F melt, ceramic wool material
- Bottom: Acrylic coated fiberglass
- Leather and elastic straps
- 7 1/2" H x 5 1/2" W



Heavy Duty Triple Layer Protection with ceramic middle layer

### Standard Single Layer Protection

555



#### 555 FEATURES

- Aluminized Carbon Kevlar®
- Designed to protect back of hand and finger tips
- Single elastic strap
- 9 1/2" H x 5 1/4" W

### Aluminized Materials

**Aluminized Rayon (AR)** – Great heat reflection, not good for heavy spatter

**Aluminized Carbon Kevlar® (ACK)** – Most resistant material to heat, sparks and spatter

\* All back-hand pads sold in eaches

# Welding Accessories

## BACK - HAND PADS

Tillman's back-hand pads are designed to be worn over the back of a welding glove to provide extra protection in high heat situations.



### Standard Double Layer Protection

550



#### 550 FEATURES

- Top: Aluminized Carbon Kevlar®
- Bottom: Vermiculite coated fiberglass
- Leather and elastic straps
- 7 1/2" H x 5 3/4" W

### Economy Double Layer Protection

550X



#### 550X FEATURES

- Top: Aluminized Rayon
- Bottom: Acrylic coated fiberglass
- Leather and elastic straps
- 7 1/2" H x 5 3/4" W

### Standard Triple Layer Protection

552



#### 552 FEATURES

- Top: Aluminized Carbon Kevlar®
- Middle/Bottom: Two layers of vermiculite coated fiberglass
- Adjustable heavy duty leather straps with hook/loop closure
- 7 1/2" H x 5 1/2" W

554



#### 554 FEATURES

- Top: Aluminized Carbon Kevlar®
- Middle: Layer of 1500°F melt, ceramic wool material
- Bottom: Acrylic coated fiberglass
- Leather and elastic straps
- 7 1/2" H x 5 1/2" W



Heavy Duty Triple Layer Protection with ceramic middle layer

### Standard Single Layer Protection

555



#### 555 FEATURES

- Aluminized Carbon Kevlar®
- Designed to protect back of hand and finger tips
- Single elastic strap
- 9 1/2" H x 5 1/4" W

### Aluminized Materials

**Aluminized Rayon (AR)** – Great heat reflection, not good for heavy spatter

**Aluminized Carbon Kevlar® (ACK)** – Most resistant material to heat, sparks and spatter

\* All back-hand pads sold in eaches

# Welding Accessories

ARM PADS, KNEE PADS, HEADGEAR PADS, HELMET BIBS

## Knee Pads



Authorized manufacturer and distributor for LAPCO, Patent #4,884,297



Arm Pad opened

### 5210 ARM PAD

- Designed to protect forearm with 1/2" closed cell foam on bottom for protection from heat when resting arm on pipe being welded
- Specially tanned leather provides greater heat resistance and protection from sparks and spatter
- Interior elastic bands keeps pad in place
- Hook and loop closure for adjustable fit
- 5210L - Left arm pad  
5210R - Right arm pad



### 562

- Leather knee pad with heavy rubber insert



### 565

- Foam knee pads
- Rugged polypropylene cap
- Elastic/hook/loop closure straps



### 564

- Rubber knee pads with elastic/hook/loop closure straps

## Headgear Pads



### 560

- Sheepskin headgear pad  
6 3/4" H x 4 1/4" W

### 561

- Sheepskin headgear pad with ratchet adjuster hole  
7" H x 5" W



### 569

- Pigskin leather sweatband  
8 1/2" H x 3 1/4" W

## Helmet Bibs



### 566

- Cowhide split leather helmet bib with metal clips  
8" H x 8" W



Helmet shown with 566 helmet bib with metal clips attached.



### 567

- Cowhide split leather helmet bib with hook/loop closure  
8" H x 8" W

# Welding Accessories

## ROD HOLDERS, CABLE COVERS, STORAGE

### 524 Heavy Duty Leather Rod Bag

- Made from heavy duty vegetable tanned cowhide
- Two compartment design allows for storage of different rod sizes
- Heavy duty reinforced,  $\frac{3}{4}$ " plywood bottom resists sharp ends
- 4" Wide belt loop
- 13"H x 4  $\frac{1}{2}$ " W x 4"D



524

### Rod Holders

### 525 Cowhide Side Split Leather Rod Bag

- Reinforced bottom
- Spring clip
- Sewn with Kevlar®
- 14"H x 3  $\frac{1}{2}$ " W



525

### Cable Covers

581V



581

### 581, 582 Leather Cable Covers

- Select side split for durability
- Sewn with Kevlar®
- Multiple lengths available
- Two closure options: Heavy duty snaps on entire length of cover - 581, 582 or hook and loop on entire length - 581V, 582V

Cable cover width when flat:

581 = 4  $\frac{1}{4}$ "  
582 = 6  $\frac{1}{2}$ "

### Storage

520



### 520 HELMET BAG

- Made from tough 600 denier coated polyester
- Large capacity main compartment with drawstring closure
- Holds all welding helmets and safety shields
- Front pocket with hook/loop closure
- Two mesh side pockets for welding gloves, small tools
- 18"H x 12"W x 12"D



### 521 TOOL BAG

- Made from tough 600 denier coated polyester
- Double layer thickness on bottom/sides keeps shape
- 1 exterior, 4 interior pockets for large and small tool storage. Great for holding TIG torch leads, portable grinders and grinding wheels
- Adjustable shoulder strap
- 10"H x 16"W x 9"D

521



### 522 BUCKET TOOL CARRIER

- Made from tough 600 denier coated polyester
- 44 pockets total: 30 exterior drape over bucket, 14 interior sit inside bucket
- Fits most 3  $\frac{1}{2}$  to 6 gallon buckets



522

### Leather Cable Cover Models

Part #	Diameter	Length
581-12.5	1 $\frac{1}{4}$ "	12.5 ft.
581-22.5	1 $\frac{1}{4}$ "	22.5 ft.
581-25	1 $\frac{1}{4}$ "	25 ft.
581-50	1 $\frac{1}{4}$ "	50 ft.
581-100	1 $\frac{1}{4}$ "	100 ft. roll
581C	1 $\frac{1}{4}$ "	Custom
581V <small>Hook/Loop Closure</small>	1 $\frac{1}{4}$ "	Custom
582-12.5	1 $\frac{3}{4}$ "	12.5 ft.
582-22.5	1 $\frac{3}{4}$ "	22.5 ft.
582-25	1 $\frac{3}{4}$ "	25 ft.
582-50	1 $\frac{3}{4}$ "	50 ft.
582-100	1 $\frac{3}{4}$ "	100 ft. roll
582C	1 $\frac{3}{4}$ "	Custom
582V <small>Hook/Loop Closure</small>	1 $\frac{3}{4}$ "	Custom

523



### 523 CELL PHONE HOLSTER

- Dense foam padding helps protect cell phone
- Spring steel clip holds to belts or bags
- Additional belt loops add extra security
- Holds small to medium size cell phones
- 6"H x 2  $\frac{1}{2}$ " W x 2"D



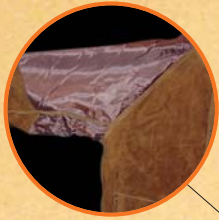
39



# Premium Import Leather Clothing

## JACKETS

Tillman leather clothing has set the standard with the highest quality, longest lasting products in the industry.



**SATIN LINED SHOULDERS/SLEEVES**  
Allow for easy on/off



**RAGLAN SLEEVES**  
Designed to follow natural shape of shoulder, providing more freedom and better overall movement

### Leather Jacket Key Features

Premium dark brown side split leather hides dirt and is specially tanned for greater heat resistance and added protection from sparks and spatter

All seams double lock stitched with Kevlar®

All button snaps black anodized to prevent arc flashback

All stress points rivet reinforced

Adjustable snaps at wrists and back

Soapstone pocket on each sleeve

All button snaps leather reinforced

Convenient outside pocket for small item storage

All hardware plated to prevent rust

**3830**  
**30" Premium Dark Brown**

### Premium Import Leather Jacket Models

Models	Premium Dark Brown	Size
<b>26" jacket</b>	3826	M, L, XL, 2X, 3X
<b>30" jacket</b>	3830	M, L, XL, 2X, 3X, 4X

### Why Leather For Welding Garments?

- Naturally fire resistant
- Very durable
- Economical for features and protection offered

### How To Measure for the Correct Size and Length

#### SLEEVES

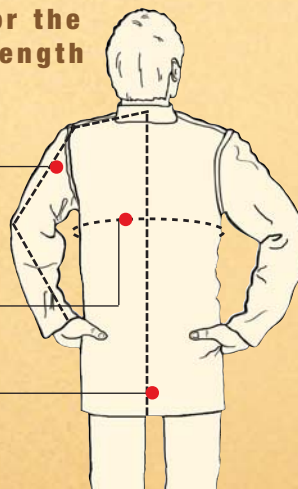
Measure from the nape of neck to the elbow point and then to the wrist

#### CHEST

Measure across breast and around back

#### JACKET LENGTH

Measure from the back of collar seam to the desired hem length



#### Size Chart

<b>Small</b>	36-38
<b>Medium</b>	40-42
<b>Large</b>	44-46
<b>X Large</b>	48-50
<b>2X Large</b>	52-54
<b>3X Large</b>	56-58
<b>4X Large</b>	60-62
<b>5X Large</b>	64-66

# Premium Import Leather Clothing

Models	Premium Dark Brown
Cape Sleeve	3821
14" Bib	3814
20" Bib	3820
Cape Sleeve + 14" Bib	3821-14
Cape Sleeve + 20" Bib	3821-20
Cape Sleeve Size	M, L, XL 2X, 3X

## CAPE SLEEVES, BIBS

The cape sleeve is designed for welders who need protection on the arms, shoulders, and top half of the chest with increased ventilation on back



### 3821-20 Premium Dark Brown Cape Sleeve + 20" Bib

### 3821 Cape Sleeve



### 3820 20" Bib (Detachable)

Bib provides protection from chest to waist or below depending on length



Open back maximizes ventilation

# Premium Domestic Leather Clothing

## JACKETS, CAPE SLEEVES, BIBS



**2480A**  
**30" Chocolate Brown Jacket**

Tillman's premium chocolate brown leather hides dirt and stains better than any other leather and also includes a soft and smooth goatskin collar



**Goatskin Collar**

### 5270A Chocolate Brown Cape Sleeve + 20" Bib



Models	Chocolate Brown	Size
30" jacket	2480A	S, M, L, XL, 2X, 3X, 4X, 5X
Cape Sleeve	5221A	S, M, L, XL, 2X, 3X, 4X
14" Bib	5114A	
20" Bib	5120A	
Cape + 14" Bib	5240A	S, M, L, XL, 2X, 3X, 4X
Cape + 20" Bib	5270A	S, M, L, XL, 2X, 3X, 4X

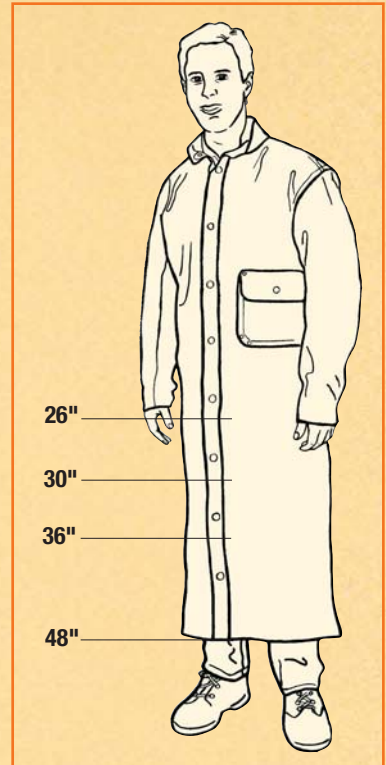
# Import Leather Clothing

## JACKETS, CAPE SLEEVES, BIBS

Tillman's import leather line is 100% inspected in the USA and offers exceptional quality and value.

### Jacket Length Chart

Tillman offers a wide range of jacket lengths from 26" to 48"

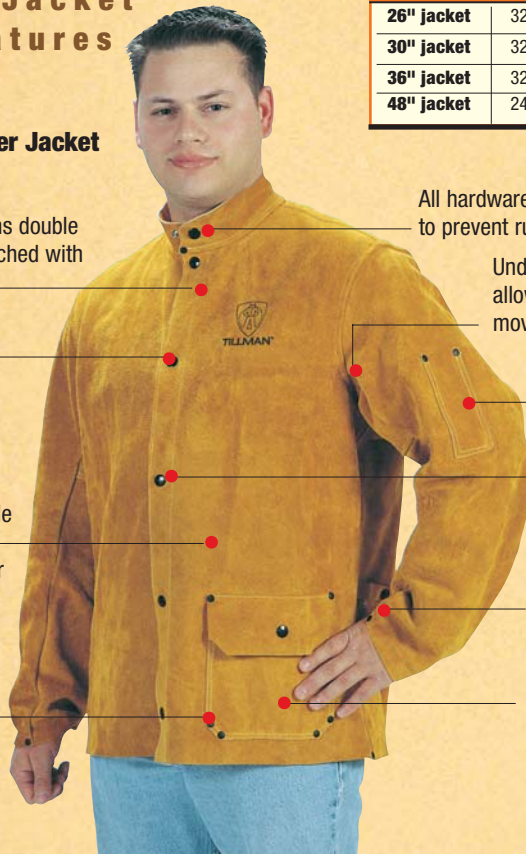


### Import Leather Jacket Models

Models	Bourbon Brown	Size
26" jacket	3260	S, M, L, XL, 2X, 3X
30" jacket	3280	S, M, L, XL, 2X, 3X, 4X, 5X
36" jacket	3285	S, M, L, XL, 2X, 3X
48" jacket	2488	S, M, L, XL, 2X, 3X, 4X

### Leather Jacket Key Features

#### 3280 30" Leather Jacket



- All seams double lock stitched with Kevlar®
- All button snaps black anodized to prevent arc flashback
- Soft, pliable, durable side split leather, specially tanned for heat resistance
- All stress points rivet reinforced
- All hardware plated to prevent rust
- Underarm gusset allows for easier movement
- Soapstone pocket on each sleeve
- All button snaps leather reinforced
- Adjustable snaps at wrists and back
- Convenient outside pocket for small item storage

### Cape Sleeve and Bib Key Features

#### 3221 Cape Sleeve



- All button snaps black anodized to prevent arc flashback
- All hardware plated to prevent rust
- Adjustable snaps at wrist
- All seams double lock stitched with Kevlar®
- All stress points rivet reinforced
- Soapstone pocket on each sleeve
- All button snaps leather reinforced
- Soft, pliable, durable side split leather, specially tanned for heat resistance

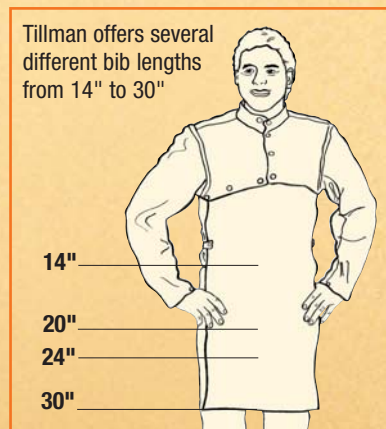
#### 3120 20" Bib

### Cape Sleeve and Bib Models

Models	Bourbon Brown
Cape Sleeve	3221
14" Bib	3114
20" Bib	3120
24" Bib	3124
30" Bib	3130
Cape Sleeve + 14" Bib	3221-14
Cape Sleeve + 20" Bib	3221-20
Cape Sleeve Size	S, M, L, XL, 2X, 3X, 4X, 5X

### Bib Length Chart

Tillman offers several different bib lengths from 14" to 30"

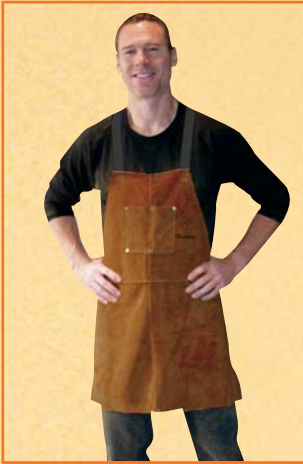


# Premium Import Leather Aprons

BENCH, BIB, WAIST, SPLIT LEG, CHAPS

## Bench Aprons

Proven designs and detailed craftsmanship make these aprons true classics.



5320A

### 5320A FEATURES

- 24" x 28"
- Apron flares to 30" at bottom for greater protection
- Two chest pockets
- One waist D-ring



Adjustable crossed back straps

### KEY BIB AND SPLIT LEG APRON FEATURES

- Made from specially tanned dark brown side split cowhide, provides greater heat resistance and added protection from sparks and spatter
- Cotton crossed back straps for comfort with side release buckles for easy on/off
- Durable molded side release buckles can be operated with gloves for easy on/off
- Two chest pockets
- Split leg aprons incorporate side release buckles down the legs and metal D-rings on front

## Split Leg Bib Apron



5300A

### 5300A FEATURES

- 24" x 54"
- Heavy duty crossed back straps for comfort
- Two chest pockets
- Double leather reinforced crotch
- One waist D-ring
- Three adjustable straps on back of each leg

5330A



Unique double reinforced crotch design

## Chaps



### 5330A FEATURES

- 24" x 38" split leg waist apron (chaps)
- Double reinforced crotch
- Heavy duty adjustable waist strap
- Three adjustable straps on back of each leg

## Waist Aprons



3824

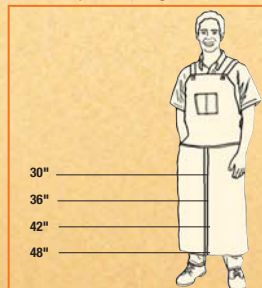


3840

### WAIST APRON FEATURES

- Made from premium side split cowhide
- Heavy duty waist strap secures apron comfortably
- Size - 3824 - 24" x 24"  
3840 - 24" x 40" (split leg)

### Bib Apron Length Chart



## Bib Aprons



3836

### SIZE

- 3836 - 24" x 36"
- 3842 - 24" x 42"
- 3848 - 24" x 48"

## Split Leg Bib Apron



3837

### SIZE

- 3837 - 24" x 36"
- 3843 - 24" x 42"
- 3849 - 24" x 48"

# Import Leather Aprons

BENCH, BIB, WAIST, SPLIT-LEG, CHAPS

## Bench Aprons



5320

### 5320 FEATURES

- 24" x 28"
- Apron flares to 30" at bottom for greater protection
- Two chest pockets
- One waist D-ring



Adjustable crossed back straps

## Split Leg Bib Apron



5300



Adjustable leg straps

## Chaps



5330

Unique double reinforced crotch design

### KEY BIB AND SPLIT LEG APRON FEATURES

- Made from specially tanned bourbon brown side split cowhide, provides greater heat resistance and added protection from sparks and spatter
- Cotton crossed back straps for comfort
- Durable molded side release buckles can be operated with gloves for easy on/off
- Two chest pockets
- Split leg aprons incorporate side release buckles down the legs

### 5300 FEATURES

- 24" x 54"
- Heavy duty crossed back straps for comfort
- Two chest pockets
- Double leather reinforced crotch
- One waist D-ring
- 3 adjustable straps on each leg

Also available in:

- 5300ALS - All leather straps

### 5330 FEATURES

- 24" x 38" split leg waist apron (chaps)
- Double reinforced crotch
- Heavy duty adjustable waist strap
- 3 adjustable straps on each legs

Also available in:

- 5330ALS - All leather straps

## Waist Aprons



4124

### WAIST APRON FEATURES

- Made from premium side split cowhide
- Heavy duty waist strap secures apron comfortably
- Size - 4118 - 24" x 18"  
4124 - 24" x 24"  
4436 - 24" x 36" (split leg)  
4440 - 24" x 40" (split leg)

4236BP



4242

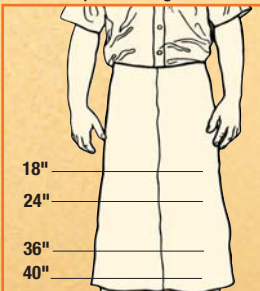


## Split Leg Bib Apron

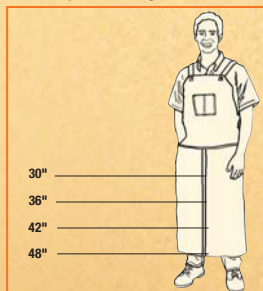


4342

### Waist Apron Length Chart



### Bib Apron Length Chart



### SIZE

- 4236BP - 24" x 36" with belly patch

### SIZE

- 4230 - 24" x 30"
- 4236 - 24" x 36"
- 4242 - 24" x 42"
- 4248 - 24" x 48"

### SIZE

- 4336 - 24" x 36"
- 4342 - 24" x 42"
- 4348 - 24" x 48"

# Foot and Leg Protection

## SPATS AND LEGGINGS

### Spats and Shoe Protectors



526



527CL

Oak Tanned Flare

Can be ordered in any style spats or legging



527

Full shoe coverage with thick, spark and spatter resistant leather

### Spats and Legging Materials

**Leather** –  
Premium side split cowhide

**Oak Tan Flare** –  
Covers the entire shoe or boot with thicker leather that has been specially tanned to be stiffer, making it more resistant to sparks and spatter

**Aluminized Rayon** –  
Great heat reflector

**Aluminized Carbon Kevlar®** –  
Most resistant material to heat, sparks and spatter

### Leggings

#### Side Bar



528CL



#### Side Bar

Aluminum bar runs length of legging and tucks into side to keep legging from dropping

#### Bicycle Style Spring Steel Clip



529CL



#### Bicycle Style Spring Steel Clip

Leather tucks into spring steel, which forms sturdy frame around leg to keep legging in position

#### Hook/Loop



530CL



#### Hook/Loop Closure

Two 14" Hook/Loop strips keep legging snug to leg

Model	Length	Closure	MATERIAL			
			Leather	Oak Tan Flare	Aluminized Rayon	Aluminized Carbon Kevlar®
526	Ankle High	Leather Straps/Snaps	526	–	–	–
527	7"	Hook/Loop	527CL	527	527AR	527ACK
528	15"	Hook/Loop Top Side Bar	528CL	528	528AR	528ACK
529	15"	Spring Steel Clip	529CL	529	529AR	529ACK
530	14"	Hook/Loop	530CL	530	530AR	530ACK

\* All spats, shoe protectors and leggings are sewn with Kevlar® thread

# Medium Weight Protective Clothing

## FLAME RETARDANT COTTON JACKETS

### Side Split Leather / FR Cotton

Great Protection  
And Cooler Than  
All Leather



#### Leather and flame retardant cotton

The ideal combination for comfort and protection

#### 9230 30" Jacket

### 14 oz., "Bull Denim" Weave FR Cotton



#### 6230H Royal Blue 30" Jacket

#### 14 oz. Extra heavy weight brushed "bull denim" weave

Our heaviest weight FR cotton jacket provides extra protection but still keeps user cool. Soft brushed interior adds comfort

*More protection than standard 9 oz. FR Cotton and cooler than leather*

### 12 oz., Whipcord FR Cotton



6230P  
Russet



6230WC  
Green

#### 9230 FEATURES

##### BODY

- 9 oz., Royal blue, 100% cotton, Proban® FR7A®
- Relaxed fit for easy movement
- Resists sudden flame and sparks
- Spacious inside pocket for small item storage
- Anodized button snaps prevent arc flashback

##### SLEEVES

- Premium quality side split cowhide specially tanned for heat resistance
- All seams double lock-stitched with Kevlar® thread
- Key stress points rivet reinforced
- Double leather reinforced button snaps
- Soap stone pocket on each sleeve
- Size - S, M, L, XL, 2X, 3X, 4X, 5X

##### Also available in:

- 9230-36 – 36" length jacket
- 9630 – 9 oz. green FR cotton body, pearl leather sleeves  
Size - M, L, XL, 2X, 3X

#### 6230H FEATURES

- 14 oz., 100% Royal blue cotton Proban® FR7A®
- Brushed cotton interior for added comfort
- Spacious inside pocket
- Anodized button snap closure
- Size - S, M, L, XL, 2X, 3X

#### 12 oz. Whipcord FR, 30" jackets

Heavier weight offers additional protection

#### 6230P, 6230WC FEATURES

- Made from 12 oz., 100% cotton Proban® FR7A®
- Inside pocket
- Anodized button snap closure
- Size - S, M, L, XL, 2X, 3X, 4X

##### Available in:

- 6230P – Russet 30" jacket
- 6230WC – Green 30" jacket
- 6230WP – Whipcord Plus - Premium Greater wear resistance

**Flame retardant cotton products are to be used for LIGHT DUTY WELDING ONLY**

# Lightweight Protective Clothing

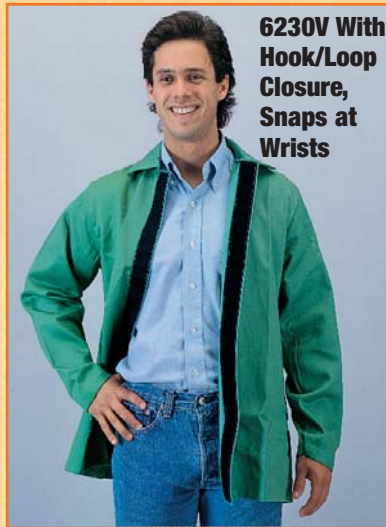
## FLAME RETARDANT COTTON JACKETS

### 9 oz. 30" Jackets

### Flame Retardant Cotton Materials



**6230**  
Green



**6230V With**  
**Hook/Loop**  
**Closure,**  
**Snaps at**  
**Wrists**

Tillman uses only USA made, Westex Proban® FR7A®, 100% cotton, flame retardant fabric. Proban® FR7A® is designed to self extinguish when exposed to flame or thermal ignition sources, and will not shrink, melt or drip molten residues. This treatment offers:

- Economical protection for light duty welding activity only
- It is cool, comfortable, and washable
- Maintains flame resistance for up to 50 home washings at 145°F or 25 commercial washings up to 165°F

**Available in:**

- 9 oz. - Lightest weight, most popular
- 12 oz. - Heavier weight, greater protection (see page 47)
- 14 oz. - Our heaviest weight, has brushed interior for extra comfort (see page 47)

\*30" jackets feature inside pocket



**6230B**  
Navy

Hides  
Dirt



**6230R**  
Red



**9030**  
We Weld America

**Flame retardant cotton products are to be used for LIGHT DUTY WELDING ONLY**

### Why Use Westex Proban® FR7A® Fabric?

- USA made
- More than 50 years of experience with specialty cotton fabrics
- Continuous technical and laboratory testing provides superior quality
- Each fabric lot thoroughly examined to ensure consistency in weight and flammability standards



**6230C**  
Camouflage



**6230D**  
Orange



**6230DRT**  
Orange with  
FR reflective stripes

High Visibility  
Safety Orange

### 9 oz. Flame Retardant Cotton Jacket Models

Part #	Color	Closure	Length	Size
6230	Green	Snap	30"	S, M, L, XL, 2X, 3X, 4X, 5X
6230V	Green	Hook/Loop	30"	S, M, L, XL, 2X, 3X
6230-36	Green	Snap	36"	S, M, L, XL, 2X, 3X
6232	Green	Snap	32" (sleeves +2")	L, XL, 2X, 3X, 4X
6230B	Navy	Snap	30"	S, M, L, XL, 2X, 3X
6230R	Red	Snap	30"	S, M, L, XL, 2X, 3X
9030	Green	Snap	30"	M, L, XL, 2X, 3X
6230D	Orange	Snap	30"	S, M, L, XL, 2X, 3X, 4X
6230C	Camo	Snap	30"	S, M, L, XL, 2X, 3X, 4X
6230DRT	Orange Reflective	Snap	30"	S, M, L, XL, 2X, 3X, 4X



# Lightweight Protective Clothing

FLAME RETARDANT SHOP COATS, HOODS

## 9 oz. Shop Coats



**6250**

\*6250 includes inside pocket



**6640B**



**6640R**

### 9 oz. Flame Retardant Cotton Jacket Models

Part #	Color	Closure	Length	Size
6250	Green	Snap	50"	S, M, L, XL, 2X, 3X
6640B	Navy	Snap	40"	M, L, XL, 2X, 3X
6640R	Red	Snap	40"	M, L, XL, 2X, 3X

\*6640B, 6640R includes one outside chest pocket and two outside waist pockets

**Flame retardant cotton products are to be used for LIGHT DUTY WELDING ONLY**

**Hoods** Three different styles protect the wearer from sparks, light spatter, and sun rays in the head and neck area. All hoods are made from 9 oz. green Westex® Proban® FR7A®, 100% cotton material.

**6010**



#### 6010 FEATURES

- Full hood with neck and chest drape
- Hook/loop closure down front for easy on/off

**6011**



#### 6011 FEATURES

- Skull cape with neck drape
- Designed to be worn under welding helmet or hard hat
- Size - S, M, L

**6012**



#### 6012, 6013 FEATURES

- 6012- internal hook/loop attachment with neck drape
- 6013- snap attachment
- Both attach to headgear inside of standard welding and hard hats
- Two part hook and loop closure provided

# Lightweight Protective Clothing

## FLAME RETARDANT COTTON CAPE SLEEVES, BIBS



**Cape Sleeve**  
**6221**  
**9 oz. Green**



**Bib**  
**6120**  
**9 oz. Green**

6221 Green Cape Sleeve and 6120 Bib

### Other 9 oz. colors



6221B – Navy Cape Sleeve  
6120B – Navy 20" Bib



6221V – Green Cape Sleeve  
6120V – Green 20" Bib

### Leather / 9 oz. Cotton



9221 – Leather, Royal Blue Cape Sleeve  
9120 – Royal Blue 20" Bib



### Cape Sleeves

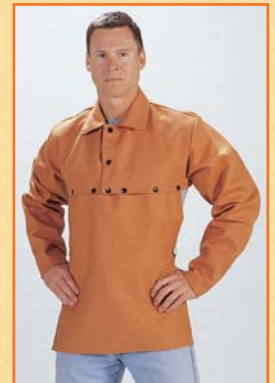
#### FEATURES

- Designed for protection on front of body, arms and shoulders with increased ventilation on back
- 100% cotton Westex Proban® FR7A®
- Anodized button snap closure (except 6221V)

### 12 oz. Whipcord



6221WC – Green Cape Sleeve  
6120WC – Green 20" Bib



6221P – Russet Cape Sleeve  
6120P – Russet 20" Bib

### 14 oz. "Bull Denim"

6221H – Royal Blue Cape Sleeve  
6120H – Royal Blue 20" Bib



**Flame retardant cotton products are to be used for LIGHT DUTY WELDING ONLY**

### Cape Sleeves and Bib Models and Size

Models	9 oz. Green	9 oz. Navy	12 oz. Green	12 oz. Russet	14 oz. Royal Blue	Leather / Cotton	Size
<b>Cape Sleeve</b>	6221 6221V Hook/Loop Closure	6221B	6221WC	6221P	6221H	9221	S, M, L XL, 2X, 3X, 4X
<b>14" Bib</b>	6114 6114V Hook/Loop Closure	6114B	6114WC	6114P	6114H	9114	
<b>20" Bib</b>	6120 6120V Hook/Loop Closure	6120B	6120WC	6120P	6120H	9120	
<b>24" Bib</b>	6124 6124V Hook/Loop Closure	6124B					
<b>30" Bib</b>	6130 6130V Hook/Loop Closure						

# Lightweight Protective Clothing

## FLAME RETARDANT SLEEVES, APRONS, PANTS, COVERALLS

### Sleeves



6217



6218



6200

FR cotton sleeves with adjustable shoulder straps

Available in:  
6200 – 23", 9 oz. Green

FR cotton sleeves with 2 1/4" elastic at both ends

Available in:

Model #	Weight/Color	FR Cotton Length	Total Length with Elastic
6216	9 oz. Green	14"	18"
6217	9 oz. Green	18"	22"
6217B	9 oz. Navy	18"	22"
6217WC	12 oz. Green	18"	22"
6201	9 oz. Green	23"	27"

FR cotton with standard elastic at both ends

Available in:

- 6218 – 18", 9 oz. Green
- 6218B – 18", 9 oz. Navy
- 6218P – 18", 12 oz. Russet whipcord
- 6218WC – 18", 12 oz. Green whipcord
- 6219 – 18", 9 oz. Green, elastic, snap at wrist
- 6200E – 23", 9 oz. Green
- 6202 – 23", 9 oz. Green, elastic, snap at wrist



9818

Kevlar® knit sleeves

- 9818 – 18" sleeves with thumb slot, double ply, 100% Kevlar®
- 9824 – 24" sleeves with thumb slot, double ply, 100% Kevlar®

### Bib Aprons



6236

#### BIB APRON FEATURES

- 9 oz. Green FR cotton
- Adjustable shoulder straps
- Size -
  - 6236 – 24" x 36"
  - 6236WC – 24" x 36" 12 oz. green whipcord
  - 6242 – 24" x 42"
  - 6248 – 24" x 48"

### Coveralls



6900

#### COVERALL FEATURES

- Rugged snap closures
- Two breast pockets
- Two rear pockets
- Two front inset pockets
- Made extra large to fit over clothes
- Size -
  - S, M, L, XL, 2X, 3X
- Colors -
  - 6900 – 9 oz. Green
  - 6900B – 9 oz. Navy
  - 6900D – 9 oz. Orange
  - 6900WC – 12 oz. Green whipcord

### Split Leg Bib Aprons



6342

#### SPLIT LEG BIB APRON FEATURES

- 9 oz. Green FR cotton
- Adjustable shoulder straps
- Snap closure leg straps
- Size -
  - 6336 – 24" x 36"
  - 6342 – 24" x 42"
  - 6348 – 24" x 48"

### Pants



6700

#### PANT FEATURES

- 9 oz. Green FR cotton, 9 oz. navy, or 12 oz. green whipcord
  - Zipper closure
  - Belt loops
  - Two rear pockets
  - Two front inset pockets
  - Size -
    - Waist – specify
    - Inseam – 32", 34", 36", 38"
- To order use:  
6700 waist + inseam - 9 oz. green  
6700B waist + inseam - 9 oz. navy  
6700WC waist + inseam - 12 oz. green

Pants are made to size

# Additional Protective Clothing

NON-DURABLE PROTECTIVE CLOTHING, KEVLAR®, NOMEX®, INDURA®

All FD material is heavyweight 12 oz. cotton. Economical FR protection. Material will lose flame resistance after washing.

## 12 oz. Non-Durable, Flame Proof Cotton (FD)



6217FD



6218FD

### 6217FD, 6218FD FEATURES

- 6217FD – 18" sleeves with 2 1/4" wide elastic at both ends
- 6218FD – 18" sleeves with standard elastic at both ends



6248FD



6242FDLP

## 9 oz. Flame Proof Duck (FPD)



### WHITE NON-DURABLE FLAME PROOF DUCK

Made of 9 oz. fabric. Inexpensive. Recommended for aprons and sleeves. Material will lose flame resistance after washing.

#### Available in:

- 6218FPD – 18" sleeves, elastic at both ends
- 6236FPD – 24" x 36" bib apron

### APRONS (ALL COTTON)

#### Available in:

- 6236FD – 24" x 36" bib apron
- 6242FD – 24" x 42" bib apron
- 6248FD – 24" x 48" bib apron
- 6336FD – 24" x 36" split leg bib apron
- 6342FD – 24" x 42" split leg bib apron
- 6248FD – 24" x 48" split leg bib apron

### APRONS (COTTON WITH 18" X 18" LEATHER PATCH)

#### Available in:

- 6236FDLP – 24" x 36" bib apron
- 6242FDLP – 24" x 42" bib apron
- 6248FDLP – 24" x 48" bib apron
- 6336FDLP – 24" x 36" split leg bib apron
- 6342FDLP – 24" x 42" split leg bib apron
- 6348FDLP – 24" x 48" split leg bib apron

## Kevlar®, Nomex®, Indura® Protective Clothing

6218FPD - Sleeves  
6236FPD - Apron

## 9 oz. Blue Cotton (BD)



6236BD

### BLUE COTTON ECONOMY SHOP APRON

9 oz., inexpensive cotton material, no flame retardant treatment

- Two chest pockets - 1 1/2" x 5", 5" x 5"
- One waist pocket - 6 1/2" x 6"
- Overall size - 27" x 38"

#### Also available in:

- 6236BDX – economy version



6230K



6230NX



6230I

## Permanent Flame Resistance

### KEVLAR®

**Kevlar®** – 8 1/2 oz. Yellow twill. Permanently flame resistant and excellent for protection against cuts and sharp objects

#### Available in:

- 6230K – 30" jacket  
Size: S,M,L,XL,2X,3X
- 6218K – 18" sleeves

### NOMEX®

**Nomex®** – 10 oz. Steel green Nomex®. Inherently flame resistant for the life of the garment. Nomex® will outwear polyester/cotton at least 4 to 1

#### Available in:

- 6230NX – 30" jacket  
Size: S,M,L,XL,2X,3X

### INDURA®

**Indura®** – 9 oz. cotton, permanent flame resistant for the life of the garment.

#### Available in:

- 6230I – 30" jacket  
Size: S,M,L,XL,2X,3X
- 6217I – 18" sleeves with 2 1/4" wide elastic on both ends
- 6218I – 18" sleeves with standard elastic on both ends

# Aluminized Protective Clothing

JACKETS, APRONS, SLEEVES, PANTS, LEGGINGS, HOODS



**WARNING:** Tillman's aluminized clothing is designed to protect against radiant high heat and/or molten metal for short durations ONLY. Prolonged exposure to high heat and/or molten metal may result in serious injury or death to the worker. DO NOT use this clothing without contacting a safety professional. Do not use this clothing for entry into enclosed spaces.

## Aluminized Material Key Features

### 16 oz. Aluminized Rayon (AR)

- Protects against radiant heat
- Lightweight
- Not recommended for molten metal

### 19 oz. Aluminized Carbon Kevlar® (ACK)

- Protects against radiant heat and molten metal splash
- High temperature asbestos replacement

### 13 oz. Aluminized Carbon Kevlar® (ACKT)

- Lightweight version of ACK

Item / Size	Aluminized Rayon (AR)	Aluminized Carbon Kevlar® (ACK)	Aluminized Carbon Kevlar® (ACKT)
Hood with 7" x 11" clear window	7000	8000	8000T
Hood with 7" x 11" gold window	7006	8006	8006T
14" bib	7114	8114	8114T
20" bib	7120	8120	8120T
23" sleeves	7200	8200	8200T
18" sleeves	7218	8218	8218T
Cape sleeve	7221	8221	8221T
30" jacket	7230	8230	8230T
36" jacket	7236	8236	8236T
40" jacket	7240	8240	8240T
50" jacket	7250	8250	8250T
24" x 24" waist apron	7324	8324	8324T
24" x 30" bib apron	7430	8430	8430T
24" x 36" bib apron	7436	8436	8436T
24" x 42" bib apron	7442	8442	8442T
24" x 48" bib apron	7448	8448	8448T
24" x 36" bib split leg apron	7536	8536	8536T
24" x 42" bib split leg apron	7542	8542	8542T
24" x 48" bib split leg apron	7548	8548	8548T
24" x 36" split leg waist apron	7636	8636	8636T
Chaps (provide waist and inseam)	7656	8656	8656T
Pants (provide waist and inseam)	7700	8700	8700T
Coveralls	7900	8900	8900T
7" spats with hook/loop closure	527AR	527ACK	-
15" side bar leggings	528AR	528ACK	-
15" spring steel leggings	529AR	529ACK	-
14" leggings with hook/loop closure only	530AR	530ACK	-

**Temperatures and applications are intended as guidelines and not as guarantees of performance. It is the users responsibility to monitor their activity at all times.**

# Blankets and Roll Goods

Welding blankets are great for covering objects that need to be protected from sparks and spatter.



## Welding Blanket Selection Criteria

Please consider the following when choosing a welding blanket:

### 1. What type of work will you be doing?

#### Welding

- **Light Duty** - general welding, light sparks and spatter
- **Medium Duty** - heavier welding applications, sparks, spatter, light slag
- **Heavy Duty** - heavy sparks, spatter, slag, molten metal
- **Extreme Duty** - extra heavy spatter, slag, molten metal

#### Stress Relief - non-coated materials only

- **0°F to 1000°F** – non-coated fiberglass materials
- **1000°F or more** – silica and vermiculite products

### 2. Is your welding application vertical or flat?

- **Vertical** application materials can be lighter weight and lower melt temperatures
- **Flat** application materials need to be heavier weight and higher melt temperatures

### 3. Which material stiffness and thickness is appropriate?

- **Stiff materials** are coated to allow spatter and slag to roll off easier, **softer materials** work well for wrapping objects for stress relief
- **Thicker materials** take longer to burn through

### 4. Does your application involve abrasion?

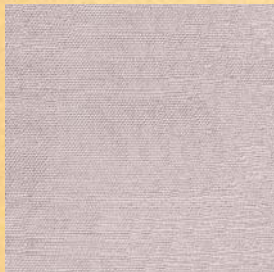
If so, consider stiffer, coated materials

## Other Important Information On Welding Blankets

- All blankets have grommets on 18" centers except when noted
- All blankets are sewn with 1000°F melt temperature fiberglass thread (except 599- leather, which uses Kevlar®, 615- ThermoFelt no stitching)
- Borders are hemmed for extra durability (except 599- leather, 615- ThermoFelt)
- Actual finished size may vary 3" in height and width

## Light Duty

584



18 oz. White Fiberglass No Coating

585



14 oz. Salmon Acrylic Coated Fiberglass

587



20 oz. Gold Acrylic Coated Fiberglass

588



18 oz. Green Hypalon Coated Fiberglass

### LIGHT DUTY

Product #	Weight	Description	Use	Temp. Rating	Thickness	Roll Sizes / Weight (approx.)	Stock Blanket Size
584	18 oz.	White fiberglass no coating	Sparks, vertical plane protection	1000°F	.03"	40" wide, 50 yards per roll, 65 lbs. 60" wide, 50 yards per roll, 98 lbs.	6' x 6', 6' x 8', 8' x 8' 10' x 10', custom
585*	14 oz.	Salmon acrylic coated fiberglass	Sparks, vertical plane protection	1000°F 1000°F	.016" .016"	38" wide, 50 yards per roll, 52 lbs. 60" wide, 50 yards per roll, 78 lbs.	Custom only
587*	20 oz.	Gold acrylic coated fiberglass	Sparks, spatter, abrasion, vertical plane protection	1000°F	.03"	40" wide, 50 yards per roll, 64 lbs. 60" wide, 50 yards per roll, 96 lbs.	6' x 6', 6' x 8', 10' x 10', custom
588*	18 oz.	Green hypalon coated fiberglass	Sparks, spatter, mildew resistant outdoor covers, vertical plane protection only	1000°F	.018"	60" wide, 50 yards per roll, 94 lbs.	Custom only

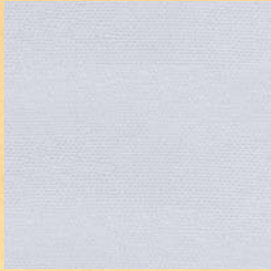
\*Not recommended for stress relief.

**Warning** Temperatures and applications are intended as guidelines and not as guarantees of performance. Please be advised that molten metal temperatures exceed 1500°F. Acrylic and silicone coated blankets are not recommended for stress relief and close proximity or direct contact with temperatures of 200°F or more may result in smoking and/or burning.

# Blankets and Roll Goods

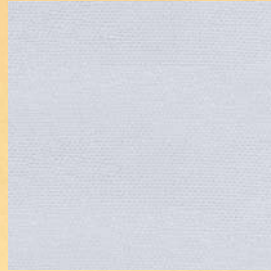
## MEDIUM DUTY

586



**24 oz. White Fiberglass  
No Coating**

589



**35 oz. White Fiberglass  
No Coating**

590



**24 oz. Gold Acrylic  
Coated Fiberglass**

591



**30 oz. Gold Acrylic  
Coated Fiberglass**

593



**32 oz. Red Silicone  
Coated Fiberglass**

598



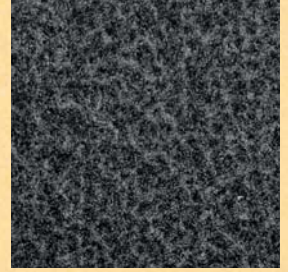
**32 oz. Orange Fiberglass  
Light Coating**

599



**Leather  
Specially Heat Treated**

615



**16 oz. ThermoFelt**

### MEDIUM DUTY

Product #	Weight	Description	Use	Temp. Rating	Thickness	Roll Sizes/Weight (approx)	Stock Blanket Size
586	24 oz.	White fiberglass no coating	Sparks, spatter	1000°F	.05"	40" wide, 50 yard roll, 90 lbs. 60" wide, 50 yard roll, 135 lbs.	Custom only
589	35 oz.	White fiberglass no coating	Sparks, spatter, great for stress relief	1000°F	.08"	40" wide, 50 yard roll, 123 lbs. 60" wide, 50 yard roll, 185 lbs.	6' x 6', 6' x 8', 10' x 10', custom
590*	24 oz.	Gold acrylic coated fiberglass	Sparks, spatter, abrasion, most popular blanket	1000°F	.034"	40" wide, 50 yard roll, 75 lbs. 60" wide, 50 yard roll, 112 lbs.	3' x 3', 6' x 6', 6' x 8', 8' x 8', 8' x 10', 10' x 10', custom
591*	30 oz.	Gold acrylic coated fiberglass	General purpose welding, sparks, spatter, abrasion	1000°F	.053"	40" wide, 50 yard roll, 94 lbs. 60" wide, 50 yard roll, 140 lbs.	3' x 3', 6' x 6', 6' x 8', 8' x 8', 8' x 10', 10' x 10', custom
593*	32 oz.	Red silicone coated fiberglass	Sparks, spatter, abrasion	1000°F	.035"	36" wide, 50 yard roll, 105 lbs. 60" wide, 50 yard roll, 175 lbs.	Custom only
598*	32 oz.	Safety orange fiberglass light coating	Sparks, spatter	1000°F	.06"	40" wide, 50 yard roll, 113 lbs.	Custom only
599	—	Leather	Sparks, spatter, superior abrasion and flexibility, excellent for auto body shops, no grommets	—	—	Not available	6' x 6', 6' x 8', custom
615*	16 oz.	ThermoFelt	Non-flammable, non-melting, non-shrinking, scratch free, general purpose welding, light sparks, spatter. Smoking and loss of tensile strength will occur when subject to molten metal.	1800°F working temperature	.15"-.20"	36" wide, 25 yard roll, 24 lbs., 60" wide, 25 yard roll, 40 lbs.	3' x 3', 6' x 6', 6' x 8', custom  615-PAD: plumbers pad, 1' x 1'

\*Not recommended for stress relief.

# Blankets and Roll Goods

## HEAVY DUTY, EXTREME DUTY

594



18 oz. Bronze Silica

596



25 oz. Black Vermiculite Impregnated Fiberglass

### HEAVY DUTY

Product #	Weight	Description	Use	Temp. Rating	Thickness	Roll Sizes / Weight (Approx. )	Stock Blanket Size
594	18 oz.	Bronze silica	Sparks, spatter, molten metal	1800°F – working temp. 3000°F – melt temp.	.03"	36" wide, 50 yards per roll, 56 lbs.	3' x 3', 6' x 6', 6' x 8', 9' x 10', custom
596	25 oz.	Black vermiculite impregnated fiberglass	Sparks, spatter, slag, stiff material	1200°F – flat surface 1700°F – vertical plane	.06"	40" wide, 50 yards per roll, 97 lbs. 60" wide, 50 yards per roll, 148 lbs.	6' x 6', 6' x 8', custom

595



36 oz. Bronze Silica

597



Triple Layer, Vertex Outer Shell, Fiberglass insert

*Stress relief for flat surfaces only*

### EXTREME DUTY

Product #	Weight	Description	Use	Temp. Rating	Thickness	Roll Sizes / Weight (Approx. )	Stock Blanket Size
595	36 oz.	Bronze silica	Sparks, heavy, spatter, molten metal	1800°F – working temp. 3000°F – melt temp.	.054"	36" wide, 50 yards per roll, 112 lbs.	3' x 3', 6' x 6', 6' x 8', 9' x 10', custom
597	–	Triple layer stress relief - Vertex® outer shell with fiberglass insert	Not used for welding spatter protection, provides the ultimate stress relief	2000°F	1.5"	–	Custom only



# Welding Curtains

## TRANSPARENT VINYL S

*Don't risk exposure. Tillman stocks a full range of curtain materials that will protect the casual passerby from harmful radiation.*

### 14 mil Flame Retardant Transparent Vinyls

#### 600, 601, 602, 603, 604, 606 FEATURES

Product provides optical protection when visibility is required for the casual viewer or passerby. It is formulated to disperse arc image and allow light back into work area. CFM approved.

The following numbers designate the vinyl color. Please insert in place of the parenthesis when ordering.

**600 = GRAY; 601 = YELLOW; 602 = GREEN;**  
**603 = ORANGE; 604 = BLUE; 606 = SHADE 8**

#### Stock Sizes

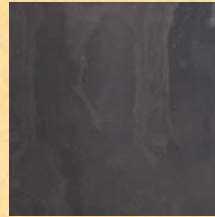
- ( ) - R64 6' x 4' Replacement curtain
- ( ) - R66 6' x 6' Replacement curtain
- ( ) - R68 6' x 8' Replacement curtain
- ( ) - R610 6' x 10' Replacement curtain

#### Custom Sizes

- ( ) - C Custom curtain grommets along top
- ( ) - R Custom curtain grommets all around

#### Roll Goods

- ( ) - 64 64" wide, 100 yd. roll, 146 lbs. per roll
- ( ) - 74 74" wide, 86 yd. roll, 150 lbs. per roll



**600**  
**Gray**



**601**  
**Yellow**



**602**  
**Green**



**603**  
**Orange**



**604**  
**Blue**



**606**  
**Shade 8**

*Transparent vinyl welding curtains are not intended as a substitute for normal eye protection for close or long term viewing. It is recommended that the user wear protective eyewear suitable for the specific application.*

### 16 mil Fire-Retardant Clear Transparent Vinyl

#### 605 FEATURES

- UV blocking, but not recommended for welding
- CFM approved

#### Custom Sizes

- 605 - C Custom curtain grommets along top
- 605 - R Custom curtain grommets all around

#### Roll Goods

- 605-72 72" wide, 53 yard roll, 100 lbs. per roll



**605**  
**Clear**

### 40 mil Fire Retardant Transparent Orange Vinyl

#### 623 FEATURES

- Used in high abrasion applications
- Excellent protection from ultra-violet rays and welding flash
- CFM approved

#### Custom Sizes

- 623 - C Custom curtain grommets along top
- 623 - R Custom curtain grommets all around

#### Roll Goods

- 623-48 48" wide, 33 yd. roll, 104 lbs. per roll



**623**  
**Orange**

**PLEASE NOTE:** When ordering curtains, order height then width. Fractions of a foot will be billed to next full foot. Be sure to add 10% to width for proper drape. Actual finished size may vary 3" in height and width.

#### GROMMET PLACEMENT:

- On curtains (C) grommets are set every 12" along top and at each corner.
- On replacement curtains for screens (R) measuring less than 50 sq. ft., grommets are set on 12" centers on all sides. For over 50 sq. ft., grommets are set on top and two sides.

*Temperatures and applications are intended as guidelines and not as guarantees of performance.*

# Welding Curtains

NON-TRANSPARENT CANVAS, VINYL S

*Don't risk exposure. Tillman stocks a full range of curtain materials that will protect the casual passerby from harmful radiation.*

## 12 oz. Olive Drab Duck Canvas

### 583 FEATURES

- General purpose material resists flame, water, and mildew
- Most economical
- Meets CPA 1-84

### Stock Sizes

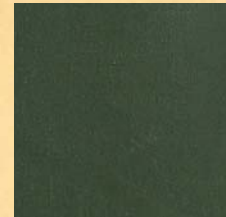
- 583-R64 6' x 4' Replacement curtain
- 583-R66 6' x 6' Replacement curtain
- 583-R68 6' x 8' Replacement curtain
- 583-R610 6' x 10' Replacement curtain

### Custom Sizes

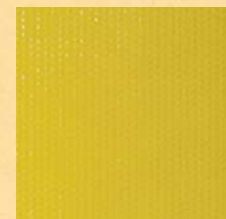
- 583-C Custom curtain grommets along top
- 583-R Custom curtain grommets all around

### Roll Goods

- 583-72 72" wide, 100 yd. roll



**583  
Olive**



**611  
Yellow**



**612  
Dark Green**



**614  
Blue**

## 13 mil Fire Retardant Vinyl Coated Polyester

### 611, 612, 614 FEATURES

Strong lightweight material resists flame, water, mildew, and most acids. Ideal for welding applications, privacy, dividers, spray areas, and draft control. CFM approved.

**611=YELLOW; 612=DARK GREEN; 614=BLUE**

### Custom Sizes

- ( ) - C Custom curtain grommets along top
- ( ) - R Custom curtain grommets all around

### Roll Goods

- ( ) - 61 61" wide, 75 yd. roll, 110 lbs. per roll

**PLEASE NOTE:** When ordering curtains, order height then width. Fractions of a foot will be billed to next full foot. Be sure to add 10% to width for proper drape. Actual finished size may vary 3" in height and width.

### GROMMET PLACEMENT:

- On curtains (C) grommets are set every 12" along top and at each corner.
- On replacement curtains for screens (R) measuring less than 50 sq. ft., grommets are set on 12" centers on all sides. For over 50 sq. ft., grommets are set on top and two sides.

*Temperatures and applications are intended as guidelines and not as guarantees of performance.*

# Portable Welding Screens

## SINGLE, TWO, THREE, FOUR PANELS

### FEATURES

- Strong 1", 18 gauge tubular steel frames. Black enamel, rust resistant finish
- Easy assembly, frames slip together quickly, no tools required
- Unique fastening system secures tubes and prevents slipping and twisting
- 24" platform legs ensure stability and balance
- 4" bottom clearance for better ventilation
- Multi-panel screens feature one piece "wrap around" curtain designed to prevent sparks and flash from escaping between hinged panels
- Hinged panels permit easy handling and compact storage
- Curtains are held by strong adjustable ties through heavy-duty grommets on 12" centers and hemmed with strong, flame resistant Kevlar® thread

### HOW TO ORDER

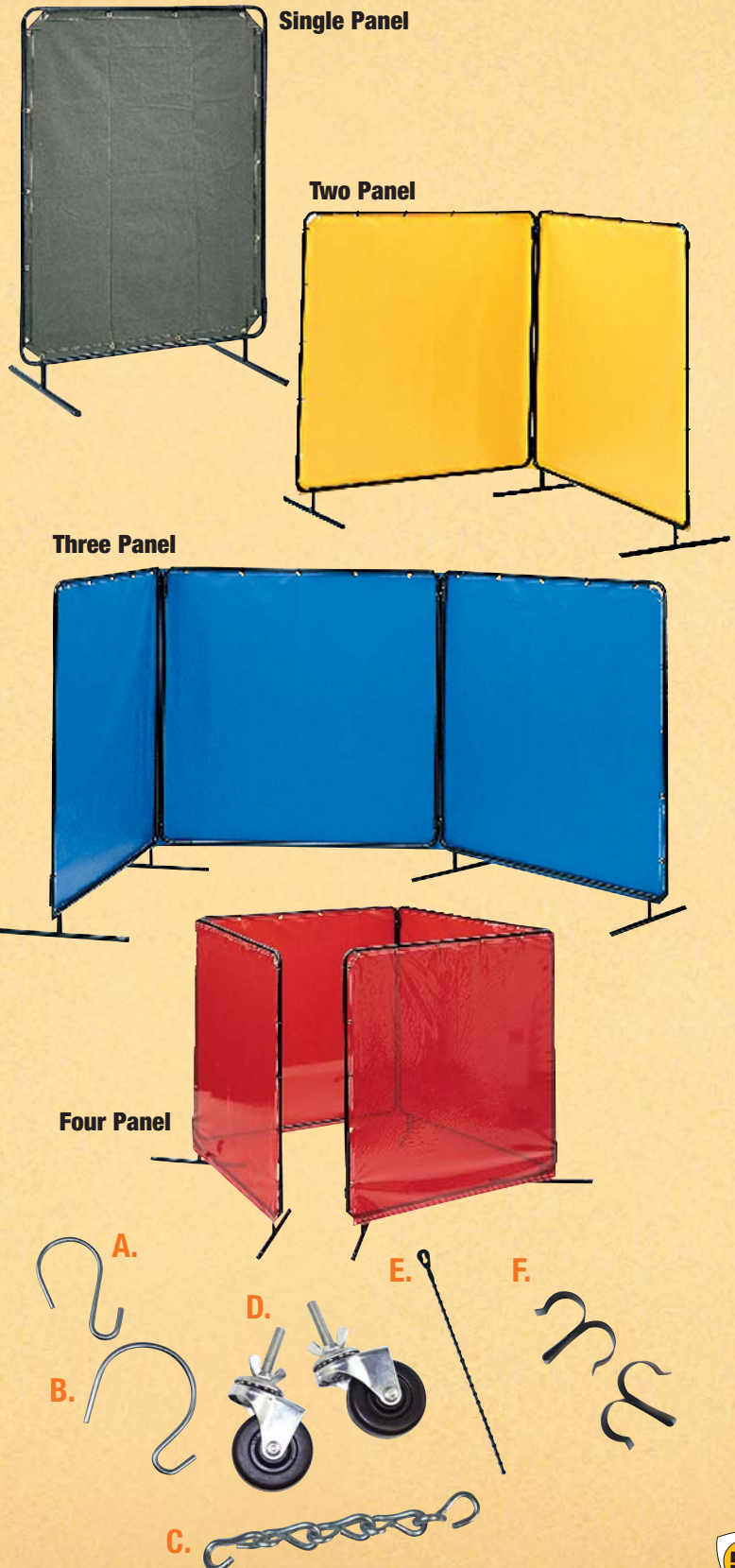
Select material from page 57 and 58 and insert into parenthesis by the size and number of panels you need

- ( ) - 1045 One panel 4' x 5' screen
- ( ) - 1055 One panel 5' x 5' screen
- ( ) - 1064 One panel 6' x 4' screen
- ( ) - 1066 One panel 6' x 6' screen
- ( ) - 1068 One panel 6' x 8' screen
- ( ) - 1088 One panel 8' x 8' screen
- ( ) - 10610 One panel 6' x 10' screen
  
- ( ) - 2055 Two panel 5' x 5' screen
- ( ) - 2064 Two panel 6' x 4' screen
- ( ) - 2066 Two panel 6' x 6' screen
- ( ) - 2068 Two panel 6' x 8' screen
- ( ) - 2088 Two panel 8' x 8' screen
  
- ( ) - 3464 Three panel 6' x 4' screen
- ( ) - 3555 Three panel 5' x 5' screen
- ( ) - 3666 Three panel 6' x 6' screen
- ( ) - 3868 Three panel 6' x 8' screen
  
- ( ) - 4666 Four panel 6' x 6' screen
- ( ) - 4868 Four panel 6' x 8' screen

### WELDING SCREEN ACCESSORIES

- A. CC3001 - 1" S Hook - each
- B. CC3002 - 2" S Hook - each
- C. CC3003 - Hem weight chain
- D. WS2001 - Casters - each
- E. WS2002 - Adjustable curtain ties - each
- F. WS2003 - Spring clips for joining screens - pair

*Tillman welding screens offer safety, spark containment, durability, portability, temperature, and noise control.*



# Track Mounted Rolling Curtains

## MOUNTS, TRACKS, ACCESSORIES

A quick and inexpensive way of creating permanent work area dividers. Curtains roll effortlessly on nylon or steel rollers inside a protected closed track. By combining tracks, virtually any size and configuration can be attained.

### Selecting and ordering rolling curtain hardware and accessories:

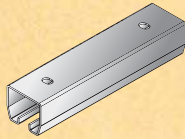
- 1) Select mounting option (wall, ceiling, suspension, or floor)
- 2) Determine shape of layout (straight, curved, etc...)
- 3) Determine dimensions
- 4) Choose curtain material
- 5) Complete component list (how many track pieces, rollers, etc...)

*Fax your layout to our staff and we'll calculate parts, prices, etc.*

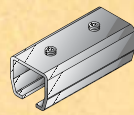
### CONFIGURATIONS AND HARDWARE

#### Straight Tracks

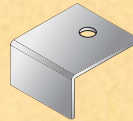
- RC1004 – 4' Track
- RC1005 – 5' Track
- RC1006 – 6' Track
- RC1007 – 7' Track
- RC1008 – 8' Track
- RC1010 – 10' Track



#### Accessories



RC1025  
Track connector



RC1026  
Track end stop

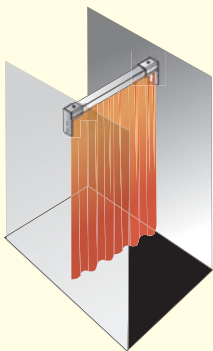


RC1027  
2 - Wheel steel roller

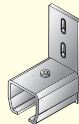


RC1028  
2 - Wheel nylon roller

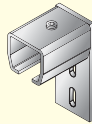
#### WALL MOUNT



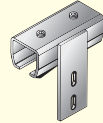
RC1050  
Track end wall support (up)



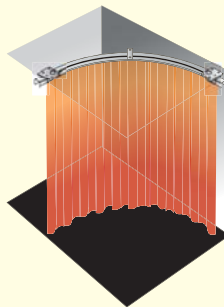
RC1051  
Track end wall support (down)



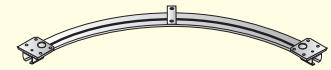
RC1052  
Straight connector wall mount



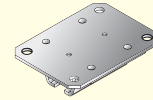
#### CEILING MOUNT



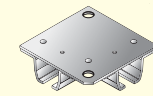
RC1045  
90° curve track



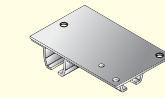
RC1046  
Track connector



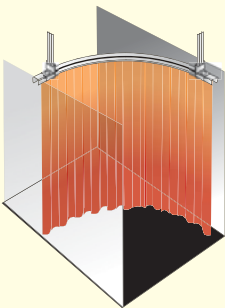
RC1047  
90° Rt. angle connector



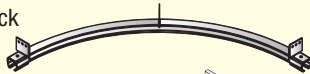
RC1048  
3-way T connector



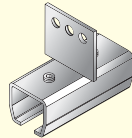
#### SUSPENSION MOUNT



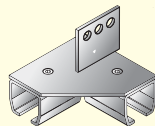
RC1030  
90° curve track



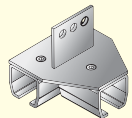
RC1031  
Track connector



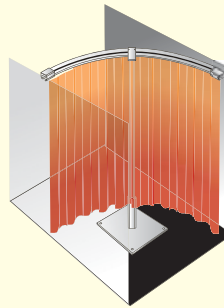
RC1032  
90° Rt. angle connector



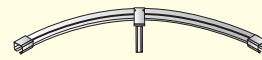
RC1033  
3-way T connector



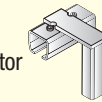
#### FLOOR MOUNT



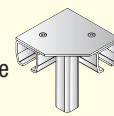
RC1063  
90° curve track



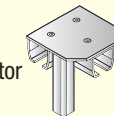
RC1064  
Track connector support



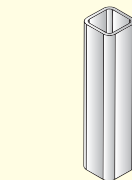
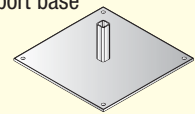
RC1065  
90° Rt. angle connector



RC1066  
3-way T connector



RC1068  
Support base



RC1076 – 6' Column  
RC1077 – 7' Column  
RC1078 – 8' Column

# Strip Curtains

## CLEAR TRANSPARENT VINYL STRIPS

*Tillman's clear transparent vinyl strip curtains are designed to save energy, protect workers, and reduce noise in warehouse and factory applications. Strip curtains are constructed of a series of interlocking, fire retardant, heavy-duty vinyl strips.*

### Clear-Warehouse

Clear vinyl is designed to protect against drafts, air loss and sound. Great for light to heavy traffic areas. Clear vinyl strips are available in three widths and thicknesses:

#### Vinyl Strips Width And Thickness

- **8" wide, .08" thick** - Protects against drafts, reduces air loss, for doors up to 8ft.
- **12" wide, .12" thick** - Interior/exterior, heavy traffic, sound, and temperature control, for doors 8ft. to 14ft.
- **16" wide, .16" thick** - Designed for heavy truck traffic for doors 8ft. to 14ft.

#### Ordering Instructions For All Vinyl Strips

*To figure out number of strips and total linear feet to cover desired area:*

1. Calculate height and width of desired area.
2. Select width of strip and overlap
3. Multiply total sq. footage of area by desired overlap in chart to determine total linear footage
4. Divide total linear footage by height of area to determine total number of strips

Width of Strips	Partial Overlap	Full Overlap
8"	2.0	3.0
12"	1.5	2.0
16"	1.0	1.5



*Clear Transparent Vinyl Strips*

**Order strip curtains by area, individual strips, or rolls:**

Clear Vinyl Strip Curtains By Area*				Clear Vinyl Individual Strips and Rolls			
ITEM #	OVERLAP	STRIP WIDTH	STRIP THICKNESS	ITEM #	STRIP WIDTH	STRIP THICKNESS	LENGTH
<b>630C</b>	1/2	8"	.08"	<b>630-300</b>	8"	.08"	300 ft. roll
<b>630FC</b>	Full	8"	.08"	<b>630R</b>	8"	.08"	Cut to length holes punched
<b>631C</b>	2/3	12"	.12"	<b>631-200</b>	12"	.12"	200 ft. roll
<b>631FC</b>	Full	12"	.12"	<b>631R</b>	12"	.12"	Cut to length holes punched
<b>632C</b>	2/3	16"	.16"	<b>632-150</b>	16"	.16"	150 ft. roll
<b>632FC</b>	Full	16"	.16"	<b>632R</b>	16"	.16"	Cut to length hole punched

\*Specify height x width

# Strip Curtains

## T I N T E D   T R A N S P A R E N T   V I N Y L   S T R I P S

*Tillman's tinted transparent vinyl strip curtains are designed to save energy, protect workers, and reduce noise in welding applications. Strip curtains are constructed of a series of interlocking, fire retardant, heavy-duty vinyl strips.*

### Tinted - Welding

Designed to protect individuals from ultraviolet radiation, sparks, and spatter. Great for traffic areas that need to be accessed regularly but still require protection. Appropriate eye protection must still be worn. Tinted transparent vinyl strips are available in three widths and thicknesses (see page 61), and in the following:

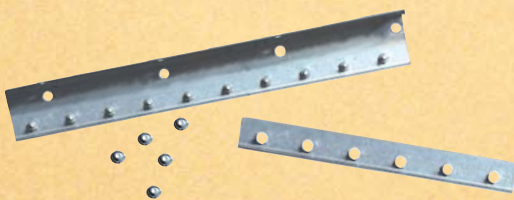
**Order strip curtains by area, by individual strips, or rolls:**

Tinted Strip Curtains By Area*					Tinted Individual Strips and Rolls				
ITEM #	COLOR	OVERLAP	STRIP WIDTH	STRIP THICKNESS	ITEM #	COLOR	STRIP WIDTH	STRIP THICKNESS	LENGTH
634C	Blue	1/2	8"	.08"	634-300	Blue	8"	.08"	300 ft. roll
634FC	Blue	Full	8"	.08"	634R	Blue	8"	.08"	Cut to length holes punched
635C	Bronze	1/2	8"	.08"	635-300	Bronze	8"	.08"	300 ft. roll
635FC	Bronze	Full	8"	.08"	635R	Bronze	8"	.08"	Cut to length holes punched
636C	Orange	1/2	8"	.08"	636-300	Orange	8"	.08"	300 ft. roll
636FC	Orange	Full	8"	.08"	636R	Orange	8"	.08"	Cut to length holes punched
637C	Bronze	2/3	12"	.12"	637-200	Bronze	12"	.12"	200 ft. roll
637FC	Bronze	Full	12"	.12"	637R	Bronze	12"	.12"	Cut to length hole punched

\*Specify height x width

### Universal Mounting Hardware

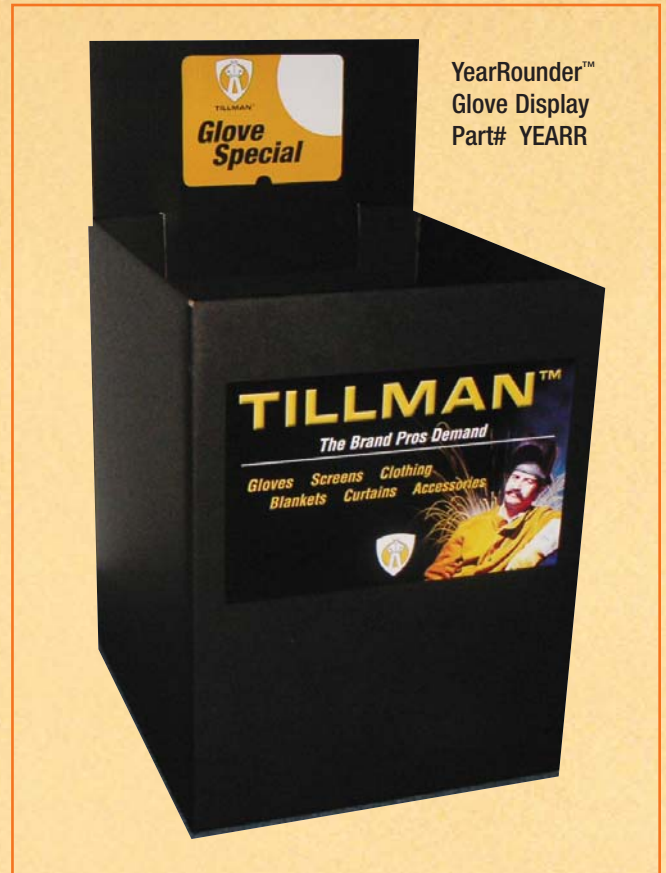
14 gauge galvanized steel, 1/4" studs, 2" centers, complete with cover plate and lock nuts. Holes punched for flush or suspended mounting. Available in 640-3 (3ft. section), 640-4 (4ft. section), 640-5 (5ft. section). Combine any of the above for wider spaces.



*Tinted Transparent Vinyl Strips*

# Merchandising and Display Aids

Merchandising Aids That Attract Customers  
(Fixture not available from Tillman)



YearRounder™  
Glove Display  
Part# YEARR

Counter Top Glove Display  
Part# DRACK

Header Sign  
8" x 36"  
Part# SIGN



Display with  
product



Marketing Materials



Sample Tillman Packaging Cards

# PREMIUM PROTECTION KIT

## 11 Welding Essentials. One Box. One Great Price.

9230 - LEATHER/FLAME  
RETARDANT COTTON JACKET

24C - PREMIUM KIDSKIN  
TIG WELDING GLOVES

1075 - PREMIUM COWHIDE  
SPLIT WELDING GLOVES

1505 - WORK GLOVES

9901 - SAFETY GLASSES

9904 - FLINT STRIKER

9905 - SOAPSTONE  
WITH HOLDER

9903 - WIRE BRUSH

9902 - CHIPPING HAMMER

9906 - TIP CLEANER

9900 - CUTTING GOGGLES



**TILLMAN**<sup>TM</sup>  
The Brand Pros Demand



PART # TKIT1

Includes Bonus  
**WE WELD AMERICA**  
T-Shirt



**(800) 255-5480**  
TEL (310) 764-0110  
FAX (310) 764-0104  
(310) 764-2700  
www.jtillman.com  
info@jtillman.com  
1300 W. Artesia Blvd.  
Compton, CA 90220

Distributed By