

WILLIAMS®



3/8" DRIVE CROWFOOT WRENCH, OPEN END, MM



10790



10791

Product Code	Size (MM)	Overall Length (Inches)	Diameter of Head (Inches)	Thickness of Head (Inches)	Thickness of Drive End (Inches)	Length of Centers (Inches)
10759	9	1 1/4	3/4	1/4	1/2	5/8
10760	10	1 1/4	3/4	1/4	1/2	5/8
10761	11	1 3/8	7/8	1/4	1/2	3/4
10762	12	1 3/8	7/8	1/4	1/2	3/4
10763	13	1 1/2	1	1/4	1/2	3/4
10764	14	1 3/4	1 1/8	1/4	1/2	1
10765	15	1 3/4	1 1/8	1/4	1/2	1
10766	16	1 3/4	1 1/4	1/4	1/2	1
10767	17	2	1 1/2	1/4	1/2	1 1/8
10768	18	2	1 1/2	1/4	1/2	1 1/8
10769	19	2	1 1/2	1/4	1/2	1 1/8
10770	20	2 1/8	1 5/8	1/4	1/2	1 1/4
10771	21	2 1/8	1 5/8	1/4	1/2	1 1/4
10772	22	2 1/4	1 5/8	1/4	1/2	1 1/4
10773	23	2 1/4	1 5/8	1/4	1/2	1 1/4
10774	24	2 1/8	2	1/4	1/2	1 1/4

10790 8 Piece 3/8" Drive Crowfoot Wrenches on Clip Rails

Contents Include:

Product Code	Size (mm)	Product Code	Size (mm)	Product Code	Size (mm)
10759	9	10762	12	10765	15
10760	10	10763	13	10766	16
10761	11	10764	14		

10791 8 Piece 3/8" Drive Crowfoot Wrenches on Clip Rails

Contents Include:

Product Code	Size (mm)	Product Code	Size (mm)	Product Code	Size (mm)
10767	17	10770	20	10773	23
10768	18	10771	21	10774	24
10769	19	10772	22		

10792 10 Piece 3/8" Drive Crowfoot Wrenches on Clip Rails

Contents Include:

Product Code	Size (mm)	Product Code	Size (mm)	Product Code	Size (mm)
10760	10	10763	13	10766	16
10761	11	10764	14	10767	17
10762	12	10765	15	10768	18
				10769	19

Features

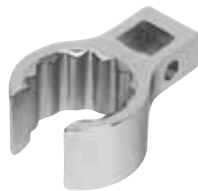
- Designed for quick engagement on both 6 and 12 point fasteners.

WILLIAMS®

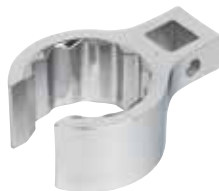


3/8" DRIVE CROWFOOT WRENCH, FLARE NUT, 12 POINT

Satin Chrome Finish, SAE



BCF-26



BCF-32

Product Code	Size (Inches)	Diameter of Head	Thickness of Head	Width of Slot	Length of Centers
BCF20	5/8	15/16	11/16	15/32	47/64
BCF22	11/16	1 1/32	11/16	17/32	29/32
BCF24	3/4	1 1/8	29/32	9/16	59/64
BCF26	13/16	1 13/64	29/32	5/8	7/8
BCF28	7/8	1 19/64	3/4	11/16	15/16
BCF30	15/16	1 3/8	3/4	29/32	15/16
BCF32	1	1 29/64	25/32	3/4	1 1/64
BCF34	1 1/16	1 17/32	29/32	29/32	1 3/64

Fed. Spec: ASME B107.21 Type 1 Class 1

WSBCF-8 8 Piece 12 Point Crowfoot Wrench on Clip Rail

Contents Include:

Product Code	Size (Inches)	Product Code	Size (Inches)	Product Code	Size (Inches)	Product Code	Size (Inches)
BCF20	5/8	BCF24	3/4	BCF28	7/8	BCF32	1
BCF22	11/16	BCF26	13/16	BCF30	15/16	BCF34	1 1/16
BCF24	3/4						



WSBCF-8



Made in U.S.A.

3/8" DRIVE

SOCKETS AND DRIVE TOOLS