



## A BRAND Giveaway

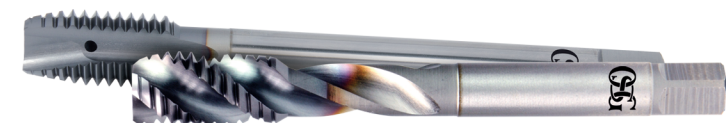
February 1, 2022- February 28, 2022

For a limited time, receive an OSG Toque with every A BRAND® THREADING product purchase. You will also receive details of how you can **win 1 of 3 OSG TOOLING CERTIFICATES** over the campaign period.

**Claim Your OSG Toque & 1 of 3 Tooling Certificates!**

For more information, please contact: [CANMarketing@osgtool.com](mailto:CANMarketing@osgtool.com)

Qualifying list numbers: 16605, 16600, 16615, 16610, 16545, 16540, 16555, 16550, 16505, 16500, 16515, 16510, 16525, 16520, 16535, 16530, 16570, 16575, 16590, 16585, 16580, 16625, 16620, 16630, 16631, 16640, 16645 and 16647.



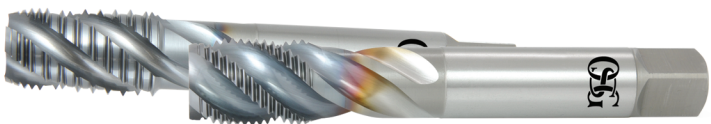
### A Brand A-SFT & A-POT

The A Brand A-SFT & A-POT are all-purpose spiral-flute & spiral-point taps designed to simplify tool management and excel in a wide variety of materials and applications.



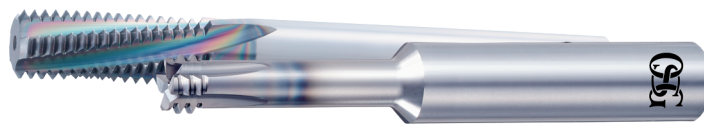
### A Brand A-CSF & A-CHT

A Brand A-CSF & A-CHT are OSG's Advanced Performance Carbide Coolant-Through Taps for Cast Iron and Aluminum Alloy.



### A Brand A-Pipe

OSG's A Brand A-Pipe taps feature an expansive size offering, enhanced cutting geometries and premium V coating for long tool life in a wide range of materials.



### A Brand AT-1 & AT-2

The A Brand AT-1 is an advanced performance one pass thread mill and the newly released A Brand® AT-2 is an end-cutting thread mill for high-hardness steels.

© Copyright 2022 OSG CANADA, LTD.. All rights reserved. EDP#800ATAP2022-C

#### OSG CANADA, LTD.

538 King Forest Court, Burlington, ON L7P 5C1  
[www.osgtool.com](http://www.osgtool.com) • 1-800-263-4861



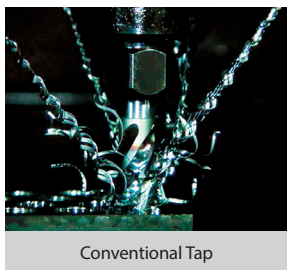
1-800-923-6255  
[www.dgisupply.ca](http://www.dgisupply.ca)

# A Brand® A-SFT & A-POT Features

## Chip Evacuation

### Excellent Chip Evacuation in Various Materials

Most tapping troubles are caused by unstable chip evacuation. The A-Tap series resolves such troubles and is applicable to a wide range of work materials and cutting conditions.



Conventional Tap



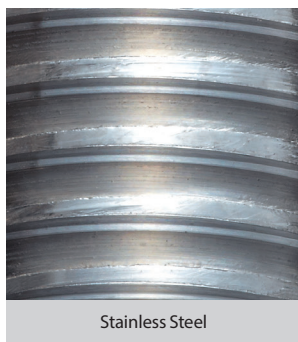
A-SFT

## Superior Threads

### No Galling of the Work Material



Mild Steel



Stainless Steel

### Sharp Cutting Edge

stabilizes chip shape

### Variable Lead Flute

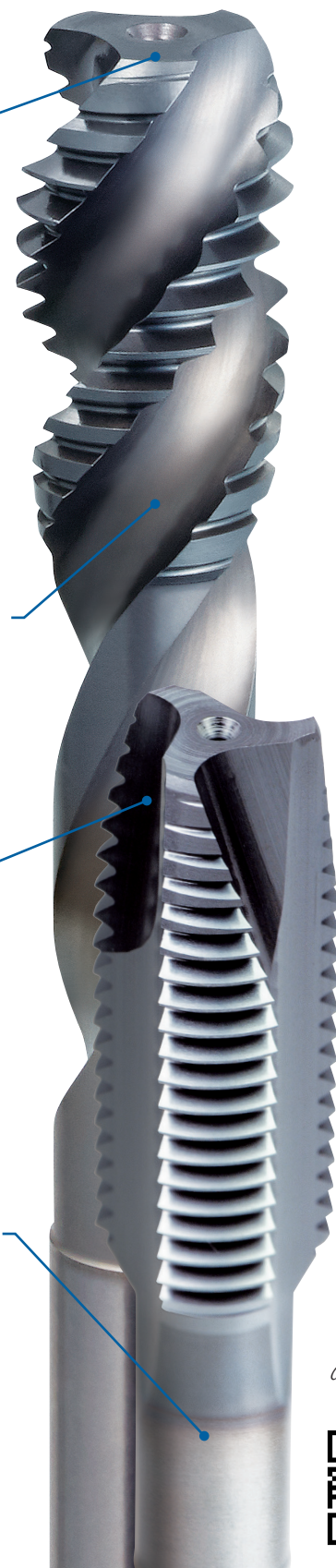
accelerates chip evacuation

### V Coating

for high wear resistance

### Powder Metallurgy HSS

for high wear resistance and toughness



CONNECT WITH  
DGI SUPPLY



**OSG CANADA, LTD.**

538 King Forest Court, Burlington, ON L7P 5C1  
www.osgtool.com • 1-800-263-4861

**DGI**  
SUPPLY®

1-800-923-6255  
www.dgisupply.ca