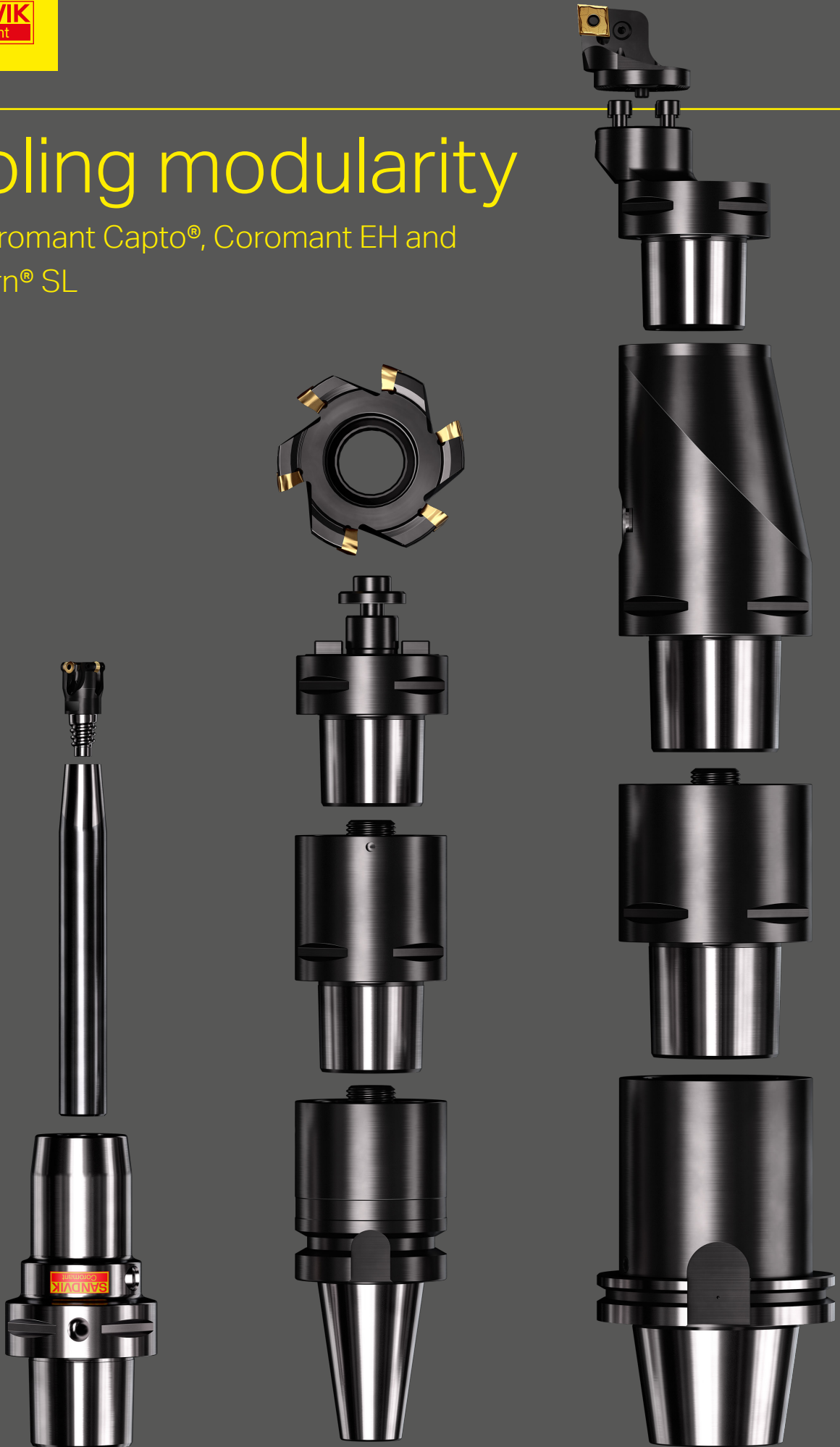


Tooling modularity

with Coromant Capto®, Coromant EH and
CoroTurn® SL

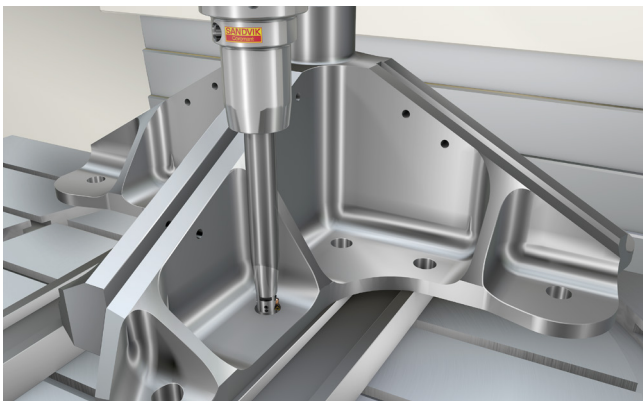


Optimized assemblies using standard items

Why spend money on a separate tool for each machine, component and feature? With modular tooling solutions you can build optimized assemblies for your specific applications with a small inventory of items.

Whether you have several machines and want a small inventory to cover all machine interfaces, need longer assembly or require varying gauge lengths, going modular saves you both time and money. How? By using modular tools you get a standardized solution throughout the workshop, for all machines. This eliminates the need for the majority of expensive engineered tools with long delivery times.

Situations where modularity has proven to be extra valuable



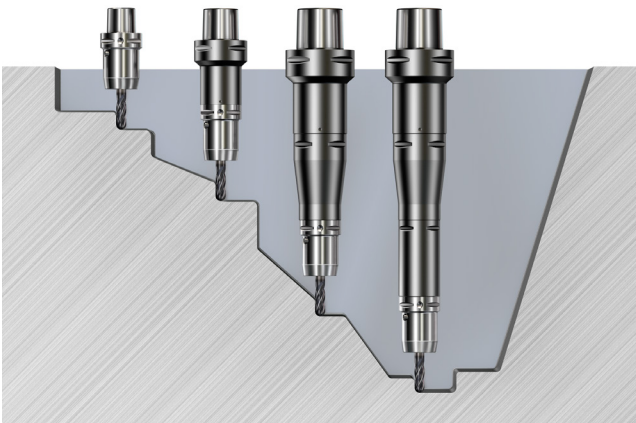
Reaching those difficult-to-access features

When you need to machine those hard-to-reach spots on your component, Coromant Capto® as a modular system offers solutions for all different lengths and machine types. Combining the right Coromant EH shank and modular adaptor gives required reach and accessibility in rotating applications.



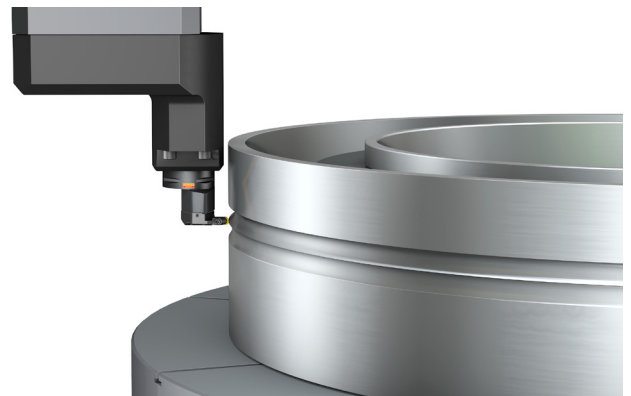
Stability in vibration-prone operations

The modularity of CoroTurn® SL opens the door to Silent tools™ damped boring bars. This solution ensures maintained productivity and close tolerances in operations with long overhangs and other vibration-prone situations. As the same boring bar can be used for various types of cutting heads, you can use it for several operations.



Small or varying production

Changing between different productions and component sizes leads to varying gauge lengths and tool diameters. Instead of ordering different engineered solutions, using Coromant Capto® extension- and reduction adaptors in your modular assemblies gives you the flexibility needed – without compromising stability.



Extra clearance when machining large components

Typically in RAM vertical turning lathes, you need extra clearance. CoroTurn SL includes SL70 interface – an oval coupling which provides both excellent rigidity and accessibility, making it optimum for profiling and grooving operations on large components. Clearance is applied for axial as well as internal machining so each cutting blade or head can be used in any configuration.



Coromant Capto® Build the length and clearance you need

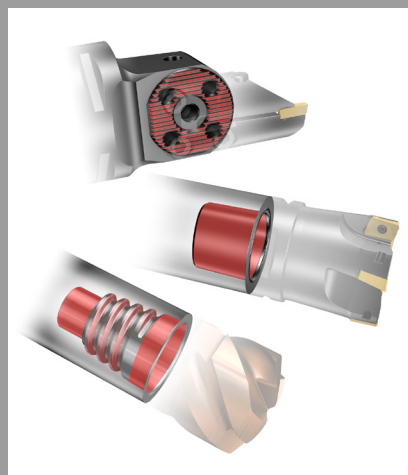
Coromant Capto® as a modular system offers a large variety of extension- and reduction adaptors. This enables assembling of tools with different lengths and design characteristics regardless of the machine interface – without risking stability. One system for a wide range of operations on both machining centres, multi-task machines and lathes is sufficient. Combining Coromant Capto with CoroTurn SL or Coromant EH systems allows for almost infinite standard assembly solutions.

From 8 minutes tool change to 40 seconds

The latest addition to Coromant Capto modular system is the adaptor that combines modular tool assembling with quick change function on tool side. With this adaptor in your assembly you have a real time-saver. You loosen the tools with just a 180 degree turn, which means you can go from spending minutes on disassembly, to do it within a minute. This makes the adaptor perfect when handling long assemblies or heavy and ungainly tools.

Coupling stability

The three systems may excel in different applications but they all have one thing in common – couplings that enables modularity without losing stability and performance.

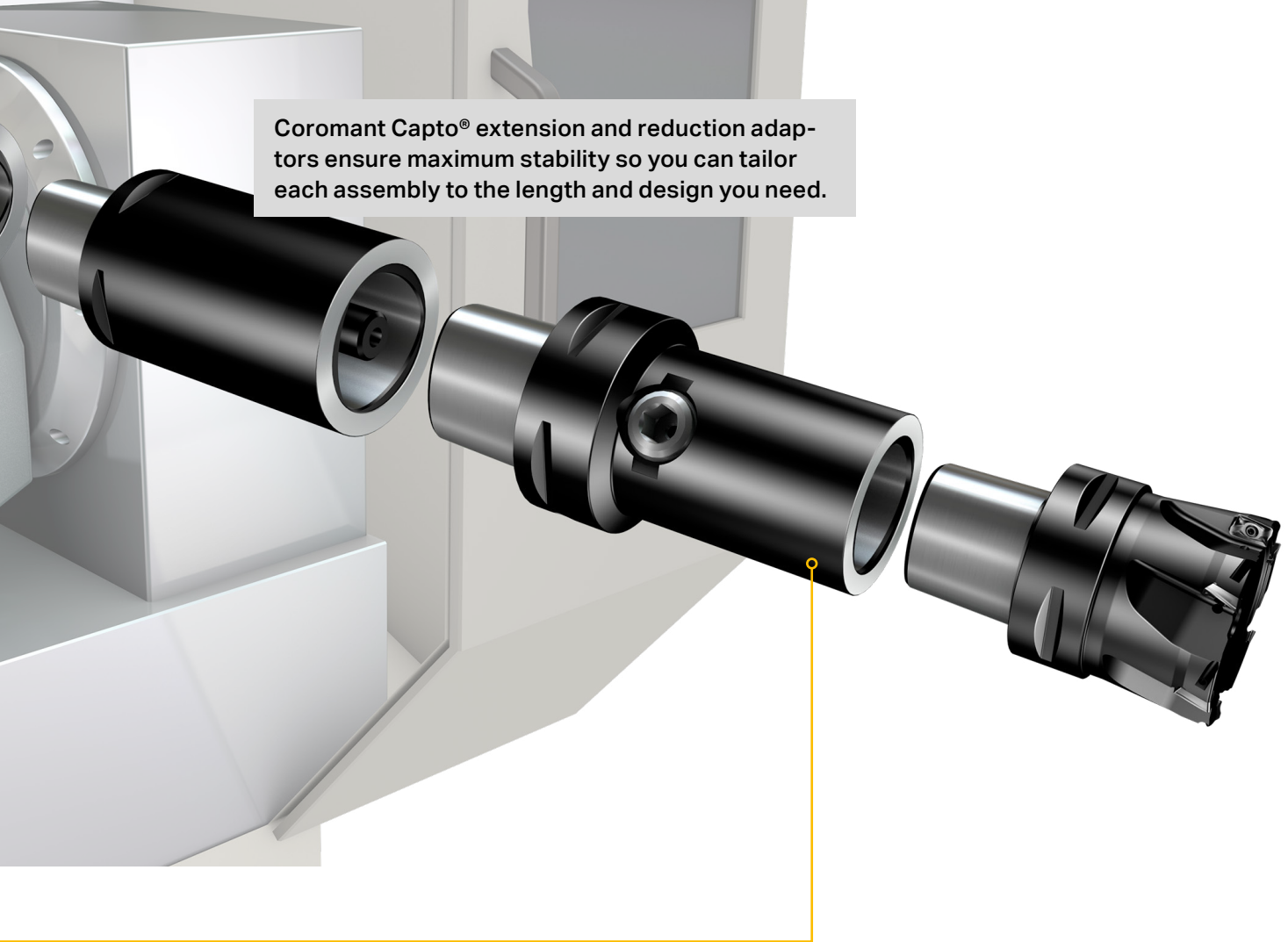


Coromant Capto: the king of couplings which with its self-centring tapered polygon form transmits torque and ensures excellent bending stiffness and stability.

Coromant EH: features a coupling based on a self-centring screw thread for secure mounting and maximum strength and security.

CoroTurn SL: with its ingenious Serration Lock (SL) interface is robust and lets you combine cutting heads and adaptors as you please.

Coromant Capto® extension and reduction adaptors ensure maximum stability so you can tailor each assembly to the length and design you need.

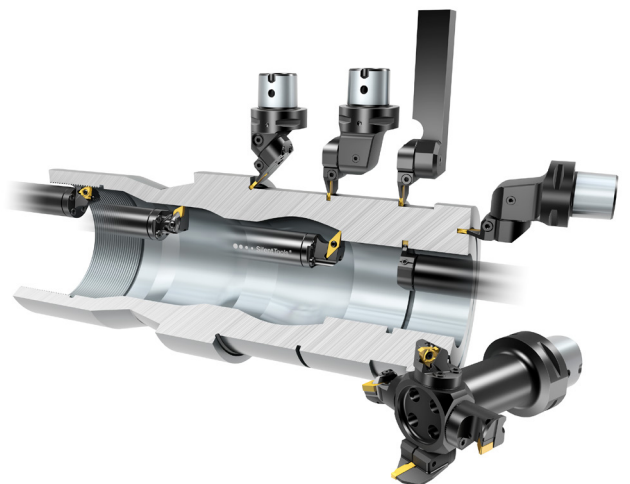


Coromant EH Tooling flexibility for small diameters

With a wide assortment of cutter heads, modular adaptors and shanks, Coromant EH gives you the flexibility to optimize the gauge length to the feature being machined. For long overhangs, a Coromant EH assembly gives you the reach and accessibility needed. For short overhangs the gauge line is critical. Then a short assembly consisting only of an integrated machine adaptor and a cutter head will do the trick, giving high productivity.

CoroTurn SL Customized tools for turning applications

CoroTurn® SL is a universal modular system of adaptors and exchangeable cutting heads with which you can build customized tools for a variety of turning applications with a minimum amount of items. The robust coupling and many combination possibilities makes it ultimate for building a tool for machining complex components.

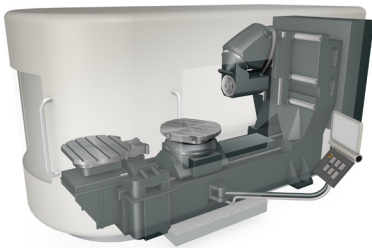


Find your modular solution

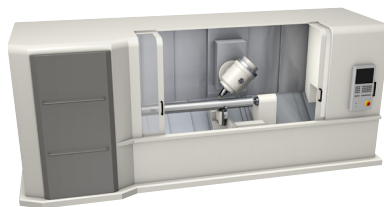
Coromant Capto®

Coromant Capto® as a modular system includes machine side interfaces:

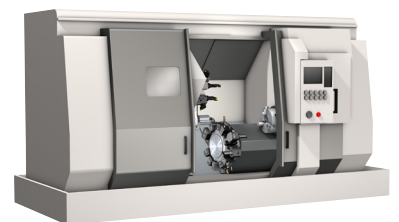
- Coromant Capto: C3–C10
- Steep taper: 30–60
- HSK: 40–160



Machining centres



Multi-task machines



Turning centres and lathes

Tailor Made

If you can't find the assembly item you need in the assortment, our Tailor Made offer includes many more options of coupling types and adaptor designs. Tailor Made means fast quotes and short delivery times.

See www.sandvik.coromant.com/tailormade



Coromant EH

Coromant EH includes cutter heads for shoulder-, face-, chamfer-, profile- and end milling and boring applications.

- Milling cutter diameters: 10–32 mm (0.394–1.256 inch)
- Boring of diameters up to 36 mm (1.417 inch)



Large machining centres

Small or medium machining centres

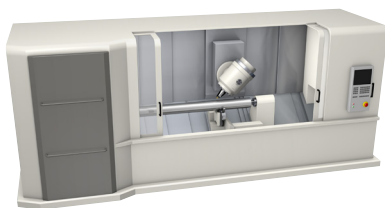
Medium to large machining centres and multi-task machines

Turning centres with driven tool holder

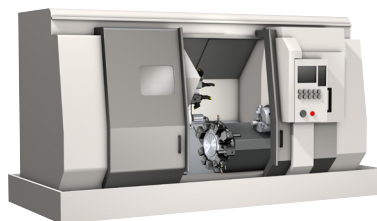
CoroTurn® SL

CoroTurn SL includes a variety of heads, blades and adaptors for internal and external turning, grooving, threading, boring and multi-task machining.

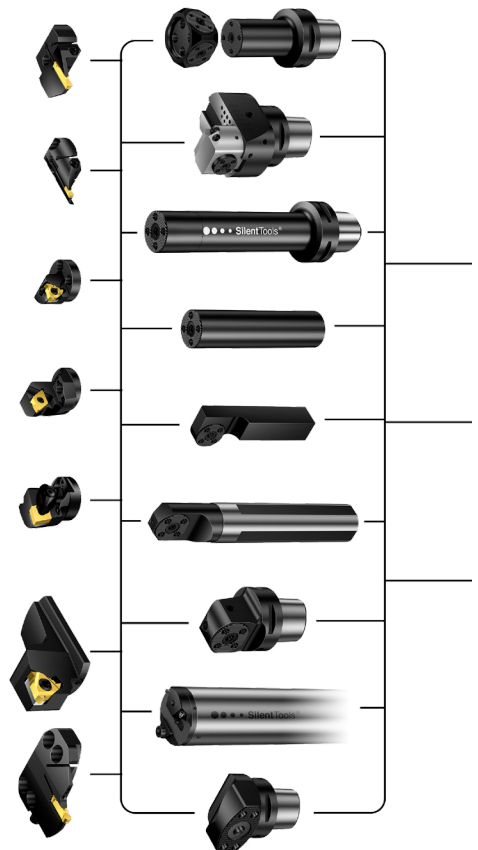
- Cutting head diameters: 16–40 mm (0.630–1.575 inch)
- Machining bore diameters down to 20 mm (0.787 inch)

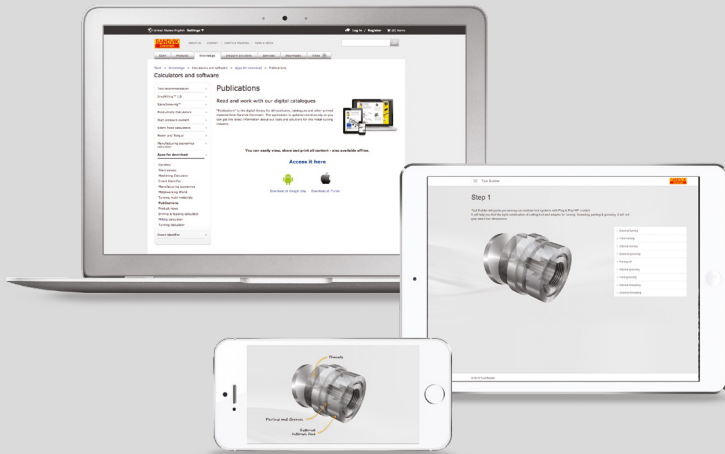


Multi-task machines



Turning centres and lathes

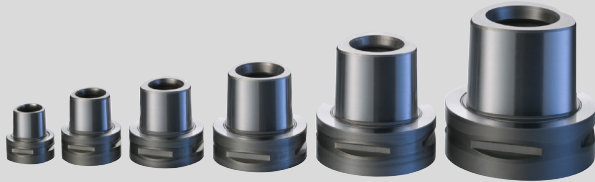




Quickly build your modular tool

Tool Builder lets you quickly find the right combination of turning tool and adaptor; simply select your application and machine interface and get a 3D-render of the suggested tooling solution.

Visit www.tool-builder.com



More about tooling systems

To make life easier for you, we have gathered tool recommendations, application tips and other useful information about tooling systems in one place.

See www.sandvik.coromant.com/toolingsystems

Head office:
AB Sandvik Coromant
SE-811 81 Sandviken, Sweden
E-mail: info.coromant@sandvik.com
www.sandvik.coromant.com

C-1040:133 en-GB © AB Sandvik Coromant 2016. Printed in Sweden by Elanders.

SANDVIK
Coromant